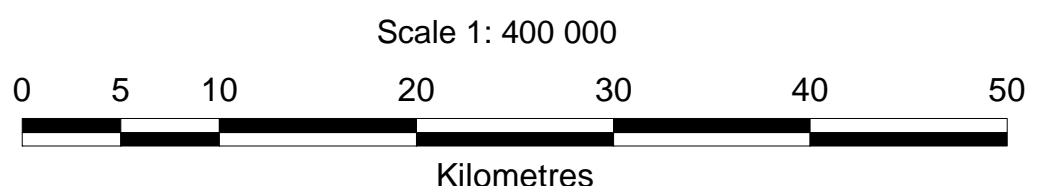


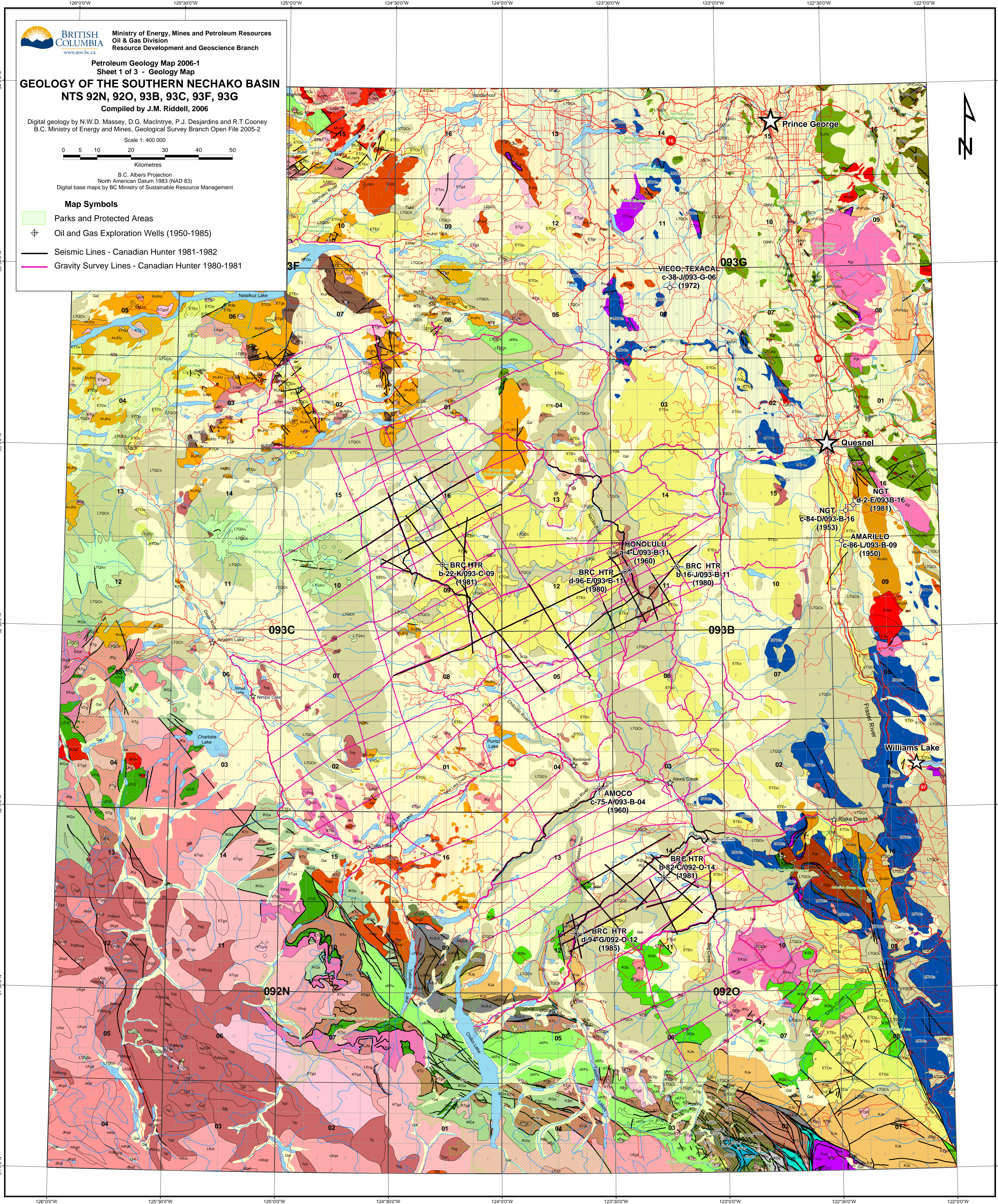
Petroleum Geology Map 2006-1
 Sheet 1 of 3 - Geology Map
GEOLOGY OF THE SOUTHERN NECHAKO BASIN
 NTS 92N, 92O, 93B, 93C, 93F, 93G
 Compiled by J.M. Riddell, 2006

Digital geology by N.W.D. Massey, D.G. MacIntyre, P.J. Desjardins and R.T. Cooney
 B.C. Ministry of Energy and Mines, Geological Survey Branch Open File 2005-2

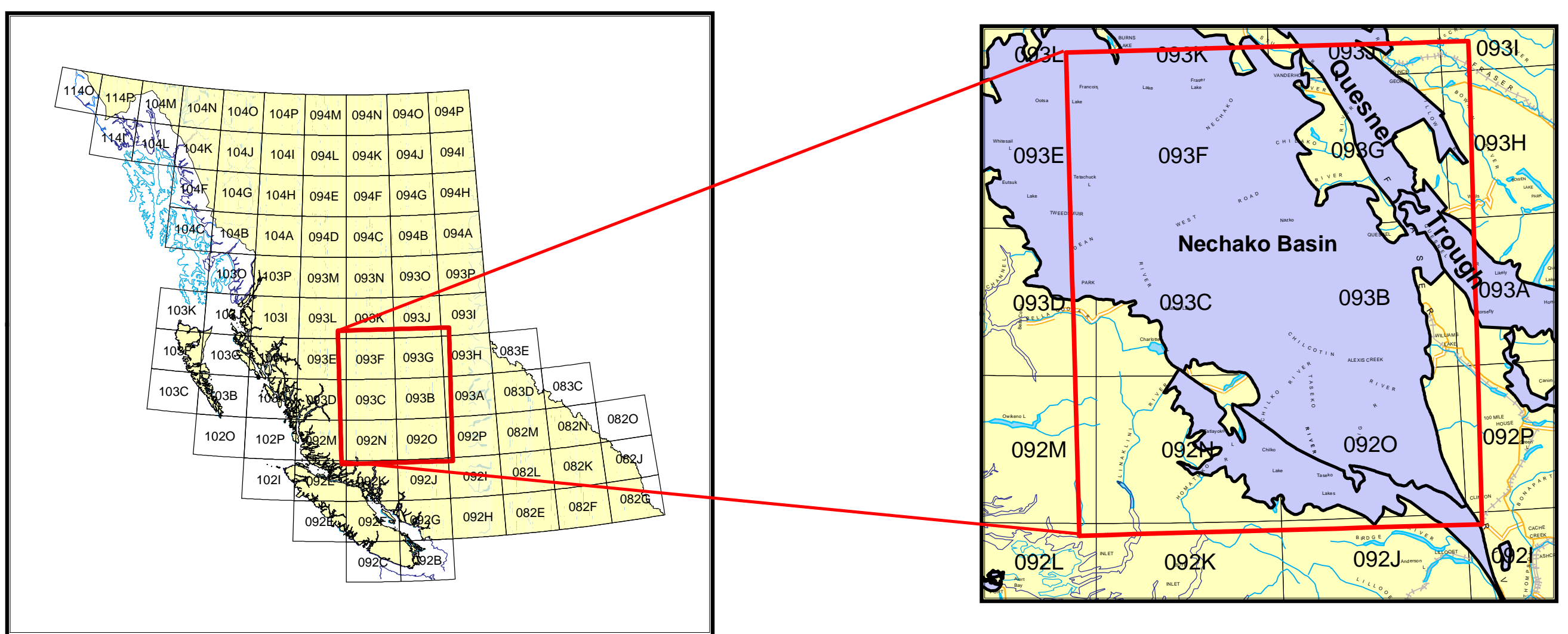


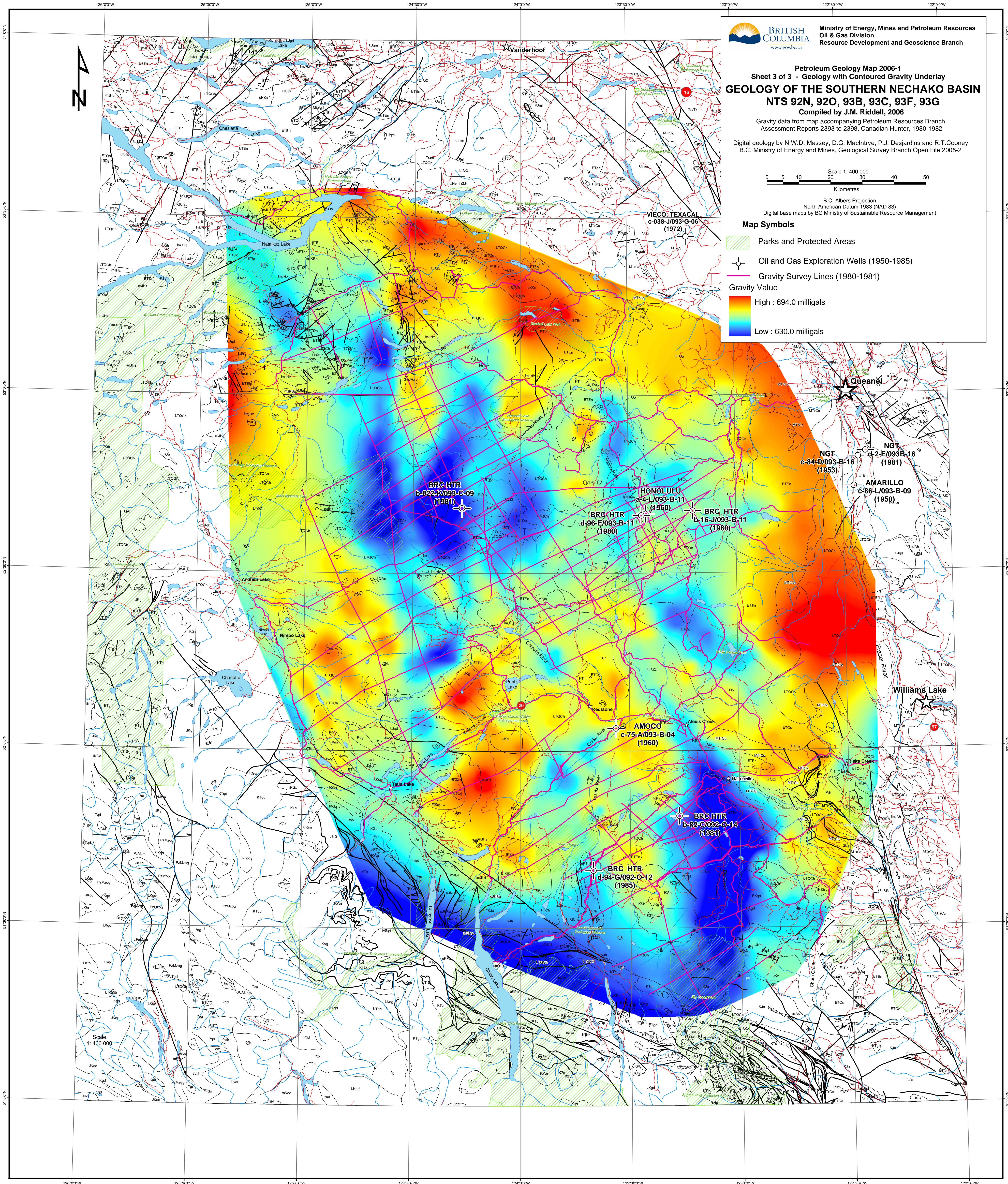
Scale 1: 400 000
 B.C. Albers Projection
 North American Datum 1983 (NAD 83)
 Digital base maps by BC Ministry of Sustainable Resource Management

- Map Symbols**
- Parks and Protected Areas
 - Oil and Gas Exploration Wells (1950-1985)
 - Seismic Lines - Canadian Hunter 1981-1982
 - Gravity Survey Lines - Canadian Hunter 1980-1981



Location Map





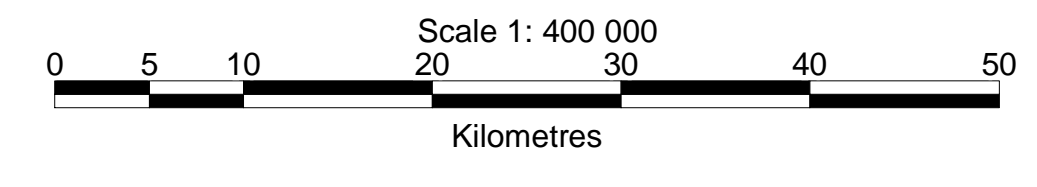
BRITISH COLUMBIA
www.gov.bc.ca

Ministry of Energy, Mines and Petroleum Resources
Oil & Gas Division
Resource Development and Geoscience Branch

Petroleum Geology Map 2006-1
Sheet 3 of 3 - Geology with Contoured Gravity Underlay
GEOLOGY OF THE SOUTHERN NECHAKO BASIN
NTS 92N, 92O, 93B, 93C, 93F, 93G
Compiled by J.M. Riddell, 2006

Gravity data from map accompanying Petroleum Resources Branch
Assessment Reports 2393 to 2398, Canadian Hunter, 1980-1982

Digital geology by N.W.D. Massey, D.G. MacIntyre, P.J. Desjardins and R.T. Cooney
B.C. Ministry of Energy and Mines, Geological Survey Branch Open File 2005-2



B.C. Albers Projection
North American Datum 1983 (NAD 83)
Digital base maps by BC Ministry of Sustainable Resource Management

- Map Symbols**
- Parks and Protected Areas
 - Oil and Gas Exploration Wells (1950-1985)
 - Gravity Survey Lines (1980-1981)
- Gravity Value**
- High : 694.0 milligals
 - Low : 630.0 milligals

Location Map

