

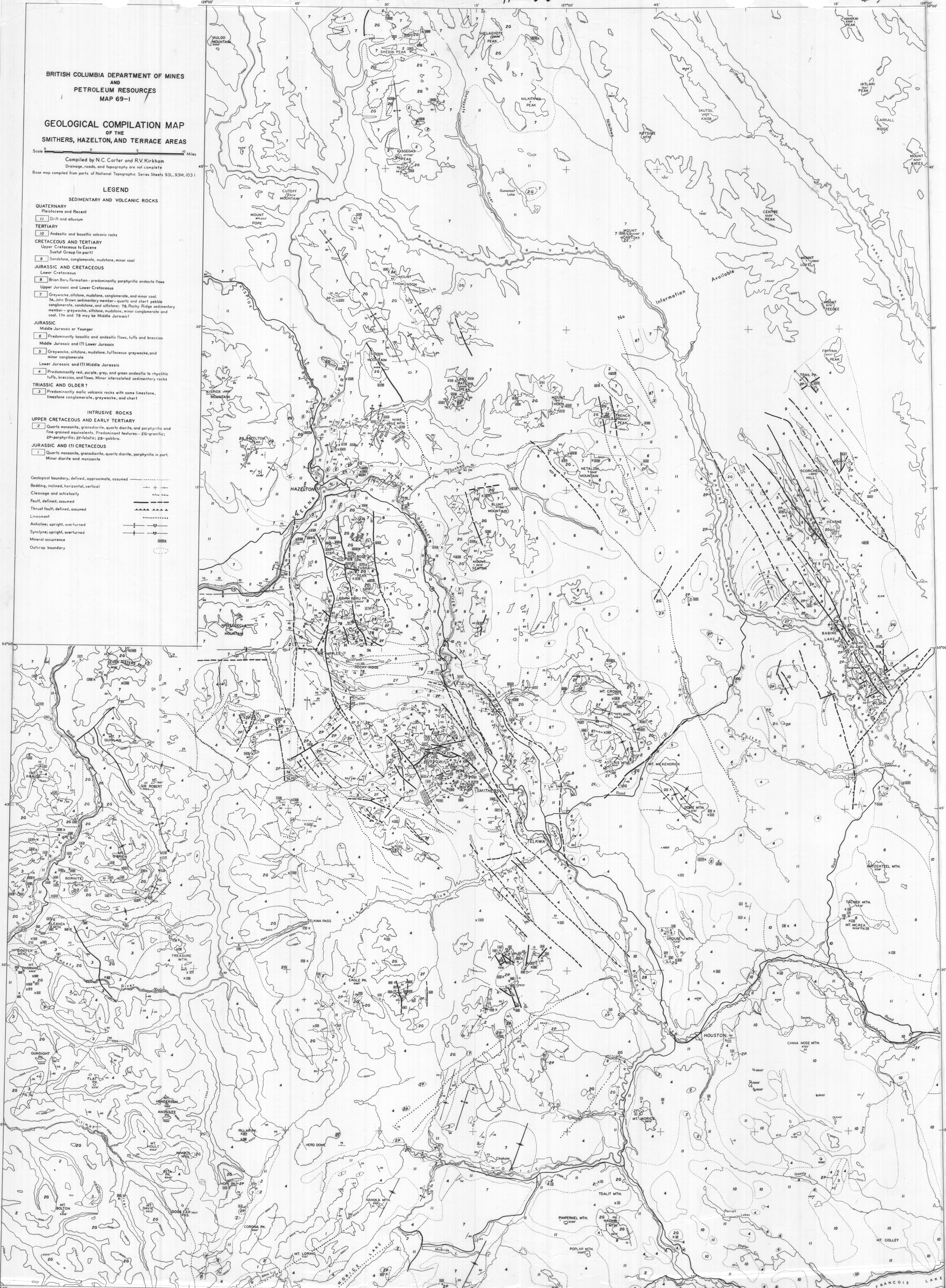
BRITISH COLUMBIA DEPARTMENT OF MINES AND PETROLEUM RESOURCES MAP 69-1

GEOLOGICAL COMPILATION MAP OF THE SMITHERS, HAZELTON, AND TERRACE AREAS

Scale 1:50,000  
Compiled by N.C. Carter and R.V. Kirkham  
Base map compiled from parts of National Topographic Series Sheets 93L, 93M, 1031

LEGEND

- SEDIMENTARY AND VOLCANIC ROCKS**
- QUATERNARY**  
Pleistocene and Recent  
11 Drift and alluvium
- TERTIARY**  
10 Andesitic and basaltic volcanic rocks
- CRETACEOUS AND TERTIARY**  
Upper Cretaceous to Eocene  
Sustut Group (in part)  
9 Sandstone, conglomerate, mudstone, minor coal
- JURASSIC AND CRETACEOUS**  
Lower Cretaceous  
8 Brian Baru Formation - predominantly porphyritic andesite flows  
Upper Jurassic and Lower Cretaceous  
7 Greywacke, siltstone, mudstone, conglomerate, and minor coal  
7A John Brown sedimentary member - quartz and chert pebble conglomerate, sandstone, and siltstone; 7B Rocky Ridge sedimentary member - greywacke, siltstone, mudstone, minor conglomerate and coal. (7A and 7B may be Middle Jurassic)
- JURASSIC**  
Middle Jurassic or Younger  
6 Predominantly basaltic and andesitic flows, tuffs and breccias  
Middle Jurassic and (?) Lower Jurassic  
5 Greywacke, siltstone, mudstone, tuffaceous greywacke, and minor conglomerate  
Lower Jurassic and (?) Middle Jurassic  
4 Predominantly red, purple, grey, and green andesitic to rhyolitic tuffs, breccias, and flows. Minor intercalated sedimentary rocks
- TRIASSIC AND OLDER?**  
3 Predominantly mafic volcanic rocks with some limestone, limestone conglomerate, greywacke, and chert
- INTRUSIVE ROCKS**  
**UPPER CRETACEOUS AND EARLY TERTIARY**  
2 Quartz monzonite, granodiorite, quartz diorite, and porphyritic and fine-grained equivalents. Predominant features - ZG-granitic; 2P-porphyritic; 2F-felsitic; 2B-gabbro
- JURASSIC AND (?) CRETACEOUS**  
1 Quartz monzonite, granodiorite, quartz diorite, porphyritic in part. Minor diorite and monzonite
- Geological boundary, defined, approximate, assumed  
Bedding, inclined, horizontal, vertical  
Cleavage and schistosity  
Fault, defined, assumed  
Thrust fault; defined, assumed  
Lineament  
Anticline; upright, overturned  
Syncline; upright, overturned  
Mineral occurrence  
Outcrop boundary





MAP 69-1

GEOLOGICAL COMPILATION MAP  
of the  
SMITHERS, HAZELTON, AND TERRACE AREAS  
(Parts of NTS Sheets 93L, 93M, 103I)

Compilation by N. C. Carter and R. V. Kirkham

SOURCES OF INFORMATION

- Armstrong, J. E. (1944): Preliminary Map, Smithers, Geol. Surv., Canada, Paper 44-23
- \_\_\_\_\_ (1944): Preliminary Map, Hazelton, Geol. Surv., Canada, Paper 44-24
- Black, J. M. (1950): Glen and Nine Mile Mountains Area, Minister of Mines, B.C., Ann. Rept., 1950, pp. 82-99
- Carter, N. C. (1965): Northern Babine Lake Area, Minister of Mines & Pet. Res., B.C., Ann. Rept., 1965, pp. 90-93
- \_\_\_\_\_ (1966): Old Fort Mountain Area, Minister of Mines & Pet. Res., B.C., Ann. Rept., 1966, pp. 92-93
- \_\_\_\_\_ (1966): Morrison Lake Area, Minister of Mines & Pet. Res., B.C., Ann. Rept., 1966, pp. 99-101
- Duffell, S. and Souther, J. G. (1964): Geology of the Terrace Map-Area, Geol. Surv., Canada, Mem. 329
- Kindle, E. D. (1937): Mineral Resources of the Terrace Area, Geol. Surv., Canada, Mem. 205
- \_\_\_\_\_ (1937): Mineral Resources, Usk to Cedarvale, Terrace Area, Geol. Surv., Canada, Mem. 212
- \_\_\_\_\_ (1954): Mineral Resources, Hazelton and Smithers Area, Geol. Surv., Canada, Mem. 223
- Kirkham, R. V. (1969): Geology of the Smithers Area, Unpublished Manuscript, B.C. Dept. of Mines & Pet. Res.
- Lang, A. H. (1942): Houston Map-Area, Geol. Surv., Canada, Map 671A
- Rice, H.M.A. (1948): Smithers-Fort St. James, Geol. Surv., Canada, Map 971A
- Sutherland Brown, A. (1960): Geology of the Rocher Deboule Range, B.C. Dept. of Mines & Pet. Res., Bull. 43

British Columbia Department of Mines and Petroleum Resources and Department of Energy, Mines and Resources, 1969, Geophysics Paper 7760, Smithers

In compiling this map, use was made of Mineral Property Assessment Reports and yearly summaries of exploration and development work forms on file with the Mineralogical Branch, British Columbia Department of Mines and Petroleum Resources.



The authors particularly acknowledge the cooperation of the following mining exploration companies in providing property locations and regional geological information:

Amax Exploration, Inc.  
 Bethlehem Copper Corporation Ltd.  
 Canadian Superior Exploration Limited  
 Falconbridge Nickel Mines Limited  
 The Granby Mining Company Limited  
 Kennco Explorations, (Western) Limited  
 Manex Mining Ltd.  
 Mastodon-Highland Bell Mines Limited  
 Noranda Exploration Company, Limited  
 Silver Standard Mines Limited  
 Texas Gulf Sulphur Company

NUMBER	PROPERTY NAME	METALS
1	S. G.	Cu, Ag
2	Silver Queen	Ag, Zn, Pb, Cu
3	Grubstake	Ag, Cu
4	Code	Cu
5	Pan	Cu
6	Morice Mountain	Mo
7	Success	Cu, Ag, Au
8	Peacock	Ag, Cu
9	Gold Brick	Au
10	Star, Klondike	Cu, Mo, Ag
11	Deer	Cu
12	Bornite	Cu
13	Joker	Cu
14	Evergreen, Three Star	Ag, Pb, Zn
15	Golden Eagle	Ag, Au, Pb, Zn
16	Gold	Ag, Au, Pb, Zn, Cu
17	Three Star	Ag, Pb, Zn
18	Topley Richfield	Ag, Au, Zn, Cu
19	Jack-Rabbit	Ag, Cu
20	Lucky, Lady, Pehu	Cu
21	Lucky, Lady, Pehu	Cu
22	Dome Mountain	Au, Ag
23	SK (Babine Gold)	Au, Ag, Pb, Zn, Cu
24	Ascot	Pb, Zn
25	Deep Creek	Ag
26	Cassiar Crown, Len	Cu, Zn, Ag
27	Mineral Hill	Mo, Cu, Ag, Pb, Zn
28	Mineral Hill, Huber	Mo, Cu, Ag
29	Pete, Bob	Cu, Ag, Pb, Zn
30	Lakeview, LV	Cu, Ag
31	Walcott, Copper No. 2	Cu
32	Barr, Lybdenum	Mo
33	-----	Cu, Ag
34	Hankin	Cu, Ag, Au
35	Hankin	Cu, Ag, Au
36	Lava	Cu, Ag, Au
37	Lava	Mo, Cu
38	Lava	Cu, Ag
39	Crater	Cu, Ag
40	Idaho ?	Cu, Ag, Au



NUMBER	PROPERTY NAME	METALS
41	King, Jackpot, Rainbow	Cu, Ag
42	Hunter	Cu, Ag
43	Colorado	Cu, Ag
44	King, Jackpot, Rainbow	Cu, Ag
45	Fog, Fly	Mo, Cu
46	Fog, Fly	Cu
47	Dominion Group	Ag, Pb, Zn, Cu
48	"B" Group	Cu
49	Dome Group (FNML)	Cu, Ag
50	-----	Mo
51	-----	Mo
52	Lamprey	Mo
53	Lucky Ship	Mo
54	Hope	Mo, Cu
55	Fog	Cu
56	Snow	Cu, Ag
57	Pillar	Cu, Ag
58	Kitimat River	Mo
59	-----	Mo, Cu
60	B.L.	Cu
61	Princess	Cu, Zn
62	War Eagle	Cu
63	Santa Maria	Cu, Ag
64	Evening	Cu, Ag
65	Joker	Cu
66	Duchess	Cu, Ag
67	-----	Cu
68	-----	Cu
69	Starr	Cu, Ag
70	P.G., B.L.	Mo
71	-----	Cu
72	"A"	Cu, Ag
73	Whitewater	W
74	Big Four	Ag, Pb, Zn, Au
75	Summit Creek	Fe
76	Northwest	Cu
77	Northwest	Cu
78	Montana	Cu, Au, Ag
79	Wells	Cu, Au, Ag
80	Avon	Cu
81	Lucky Jim	Cu, Ag
82	Dardanelle	Pb, Zn, Ag
83	Eureka	Mo
84	B-claim	Cu, Pb, Zn, Ag, Au
85	Coin	Cu, Pb, Zn, Ag, Au
86	A-claim	Cu, Pb, Zn, Ag, Au
87	St. Paul	Cu, Pb, Zn, Ag, Au
88	Ptarmigan	Cu, Pb, Zn, Ag, Au
89	La Libertad	Cu, Pb, Zn, Ag, Au
90	Globe	Cu, Au, Ag
91	Providence	Pb, Zn, Ag
92	Zymoetz	Pb, Zn, Ag
93	Croesus, Excelsior	Cu, Au, Ag
94	Silver Bow, Silver Cliff	Pb, Zn, Ag, Cu
95	Terrace	Au
96	Victor	Au
97	Columario	Cu, Au, Ag
98	Kendall Creek	Mo



NUMBER	PROPERTY NAME	METALS
99	Kendall Creek	Pb, Zn, Ag
100	Copper King	Cu, Au, Ag
101	Nugget	Cu, Au, Ag
102	Lucky Luke	Cu, Au, Ag
103	Cordillera	Cu, Au, Ag
104	Independence	Cu, Au, Ag
105	Emma	Cu, Au, Ag
106	IXL	Cu, Au, Ag
107	Four Aces	Cu, Au, Ag
108	Toulon	Cu, Au, Ag
109	Madden	Cu, Au, Ag
110	Single Hurst	Cu, Au, Ag
111	Continental	Cu, Au, Ag
112	Banner Homestake	Cu, Au, Ag
113	Silver Basin	Cu, Au, Ag
114	Silver Crown	Cu, Au, Ag
115	M and M	Cu, Pb, Zn, Ag, Au
116	Zona May	Cu, Pb, Zn, Ag, Au
117	M and K	Cu, Pb, Zn, Ag, Au
118	Frisco	Cu, Au, Ag
119	Galena	Cu, Pb, Zn, Ag, Au
120	Silver Mitts	Cu, Pb, Zn, Ag, Au
121	United St. Croix	Cu, Pb, Zn, Ag, Au
122	Shenandoah	Cu, Pb, Zn, Ag, Au
123	St. Elmo	Cu, Pb, Zn, Ag, Au
124	Bradle Bane	Mo
125	Diadem	Cu, Au, Ag
126	Nicholson Creek	Mo
127	A-B	Cu, Au, Ag
128	Grotto	Cu, Au, Ag
129	Diorite	Cu, Au, Ag
130	J. B., O Molly, H.M.	Mo
131	Gold Dome	Cu, Pb, Zn, Ag, Au
132	Fiddler	Cu, Pb, Zn, Ag, Au
133	Patmore	Pb, Zn, Ag
134	Dry Hill Placer	Au
135	Canadian Swede	Au
136	Windfall	Cu, Pb, Zn, Ag, Au
137	Hughie	Cu, Pb, Zn, Ag, Au
138	Seven Sisters	Cu, Pb, Zn, Ag, Au
139	Caledonia	Cu, Pb, Zn, Ag, Au
140	Molybdenite	Mo
141	Jan	Cu, Mo
142	Kit	Ag, Pb
143	Lefty (L'orsa)	Cu, Ag
144	Lou	Cu, Mo
145	Ax	Cu, Ag
146	MMX	Cu, Ag
147	NH	Cu, Ag
148	Serb Creek	Mo
149	-----	Cu, Ag
150	Copper Queen	Cu, Ag
151	-----	Cu, Ag
152	King Tut	Ag, Pb, Zn
153	Sil-Van Mine	Ag, Pb, Zn, Au
154	Sil-Van Mine	Ag, Pb, Zn, Au
155	Coronado	Ag, Pb, Zn
156	Mamie	Zn, Cu, Ag, Au



NUMBER	PROPERTY NAME	METALS
157	Torrent	Ag, Pb, Zn
158	Victory	Ag, Pb, Zn
159	Iron King	Zn, Cu, Au
160	-----	Cu, Ag
161	Bonanza	Cu, Ag
162	Silver Lake, Cee	Ag, Pb, Zn, Cu, Au
163	Iron Vault, Van Anda	Ag, Pb, Zn
164	Matuss	Ag, Pb, Zn, Au, Cu
165	Mammoth, Iron Mask	Ag, Pb, Zn, Au, Cu
166	Copper Queen	Ag, Zn, Cu, Au
167	Last Chance	Cu, Ag
168	Rio Grande	Au, Cu, Zn
169	Rico Aspen	Ag, Pb, Zn, Cu, Au
170	Evelyn	Ag, Pb, Zn, Cu, Au
171	Carroll	Ag, Pb, Zn, Cu, Au
172	Glacier Gulch North Side	Ag, Pb, Zn, Au
173	Glacier Gulch South Side	Ag, Pb, Zn, Au
174	Glacier Gulch Gold-Bismuth	Au, Bi, Te
175	Glacier Gulch Molybdenum	Mo, W, Cu
176	Yukon	Ag, Pb, Zn, Au
177	-----	Ag, Pb, Zn, Au
178	Vancouver (Lone Star)	Ag, Pb, Zn, Au
179	Cascade	Ag, Pb, Zn, Au
180	Jessie	Ag, Pb, Zn, Au
181	Empire	Ag, Pb, Zn, Au
182	Snowshoe	Ag, Pb, Zn, Au
183	-----	Cu, Ag
184	Neepawa	Zn, Cu, Au
185	Mayflower	Zn, Cu, Au
186	Smithers Copper	Cu, Ag
187	Canadian Citizen	Cu, Ag
188	-----	Cu
189	Big Onion (Cimbria)	Cu, Mo
190	Silver Pick, Little Joe	Pb, Zn, Ag
191	Silver Queen	Pb, Zn, Ag
192	Cronin Mine	Ag, Pb, Zn
193	Hyland Basin	Pb, Zn, Ag
194	Lorraine	Cu
195	Copper Queen	Cu
196	Harvey	Cu
197	Rainbow	Pb, Zn, Cu, Ag
198	-----	Cu
199	-----	Ag, Pb, Zn, Sb, Cu, Mo
200	-----	Ag, Pb, Zn
201	-----	Mo
202	-----	Ag, Pb, Zn
203	-----	Pb, Zn
204	-----	Cu, Pb, Zn, Ag
205	Debenture, Wanda	Pb, Zn
206	G.K.	Cu, Pb, Zn
207	Brenda	Cu, Ag
208	Tony	Cu, Ag
209	Tachi	Cu, Mo
210	Tachek Island	Cu
211	Granisle Mine	Cu
212	Newman	Cu
213	Mag	Pb, Zn



NUMBER	PROPERTY NAME	METALS
214	Snoopy	Cu
215	Off, Raid, DDT	Cu, Mo
216	Jake	Cu
217	Kofit	Cu
218	Morrison	Cu
219	Wolf	Cu, Mo
220	Haut	Cu
221	Da-Nak	Cu
222	CAVZ	Cu
223	Red, French	Cu
224	Foss	Ag
225	Suskwa	
226	Rio	Ag, Pb
227	-----	Mo
228	Higgins	Au, Ag
229	-----	Ag
230	-----	Cu
231	Wasp	Cu
232	Tetra	Ag, Pb, Zn
233	-----	Mo
234	-----	Mo
235	-----	Mo
236	Blunt	Cu, Mo
237	-----	Mo
238	Utah ?	Ag, Pb, Zn, Sb
239	King	Cu, Mo
240	King	Cu, Mo
241	Niche	Cu, Mo, Ag
242	O.K.	Ag, Pb
243	True Fissure	Ag, Pb, Zn
244	-----	Mo
245	-----	Cu
246	Ace <i>-in sedo just SW of 248</i>	Ag, Pb, Zn
247	-----	Ag, Pb, Zn
248	Ace <i>-on ridge in diorite/porphyry</i>	Cu, Mo
249	Silverton	Au, Ag
250	Barber Bill	Ag, Pb, Zn
251	Silver Cup	Ag, Pb, Zn
252	Pole Star	Ag, Pb, Zn
253	Slocan	Ag, Pb, Zn
254	Sunrise	Ag, Pb, Zn, Sb
255	Lead King	Ag, Pb, Zn
256	Slocan	Ag, Pb, Zn
257	Silver Pick	Ag, Pb, Zn
258	American Boy	Ag, Pb, Zn
259	Surprise	Au, Ag
260	Silver Standard	Ag, Pb, Zn
261	Babine	Ag, Pb, Zn
262	Erie (Mohawk)	Ag, Pb, Zn
263	Comet	Ag, Pb, Zn
264	Daley West	Cu, Au, Ag
265	Lone Star	
266	-----	Mo, Cu
267	Blue Lake	Mo
268	Black Prince	Cu
269	-----	Mo



NUMBER	PROPERTY NAME	METALS
270	-----	Cu
271	-----	Mo
272	Sultana	Mo, Cu, Ag
273	-----	Mo, Cu
274	MT	Cu, Mo
275	Brian Boru	Cu, Pb, Zn
276	-----	Mo, Cu
277	Brunswick	Ag, Pb, Zn
278	Red Rose	W, Cu, Mo
279	Armagosa	Cu, W
280	Great Ohio	Cu, Pb, Zn
281	Highland Boy	Cu, Au, Ag
282	Rocher Deboule	Cu, Au
283	Victoria	Au, Mo, Cu, U
284	Cap	Cu, Zn
285	Golden Wonder	Cu, Ag
286	Three Hills	Cu
287	Silver Bell	Ag, Pb, Zn
288	Fortune Hill	Au, Ag
289	Tenas	Mo
290	Laura	Mo
291	Molly, Moly, Red	Mo, Cu
292	-----	Ag
293	Goathead, Fog, Frost	Mo
294	-----	Mo
295	Ice	Mo, Cu
296	Cumo, Ike	Mo, Cu
297	Peak	Mo, Cu
298	Atna ?	Ag, Pb, Zn
299	Atna	Mo, Cu
300	Atna	Mo, Cu
301	Jan	Cu, Mo
302	Jan	Cu, Mo
303	Shel	Mo
304	Brian, Add	Cu, Mo