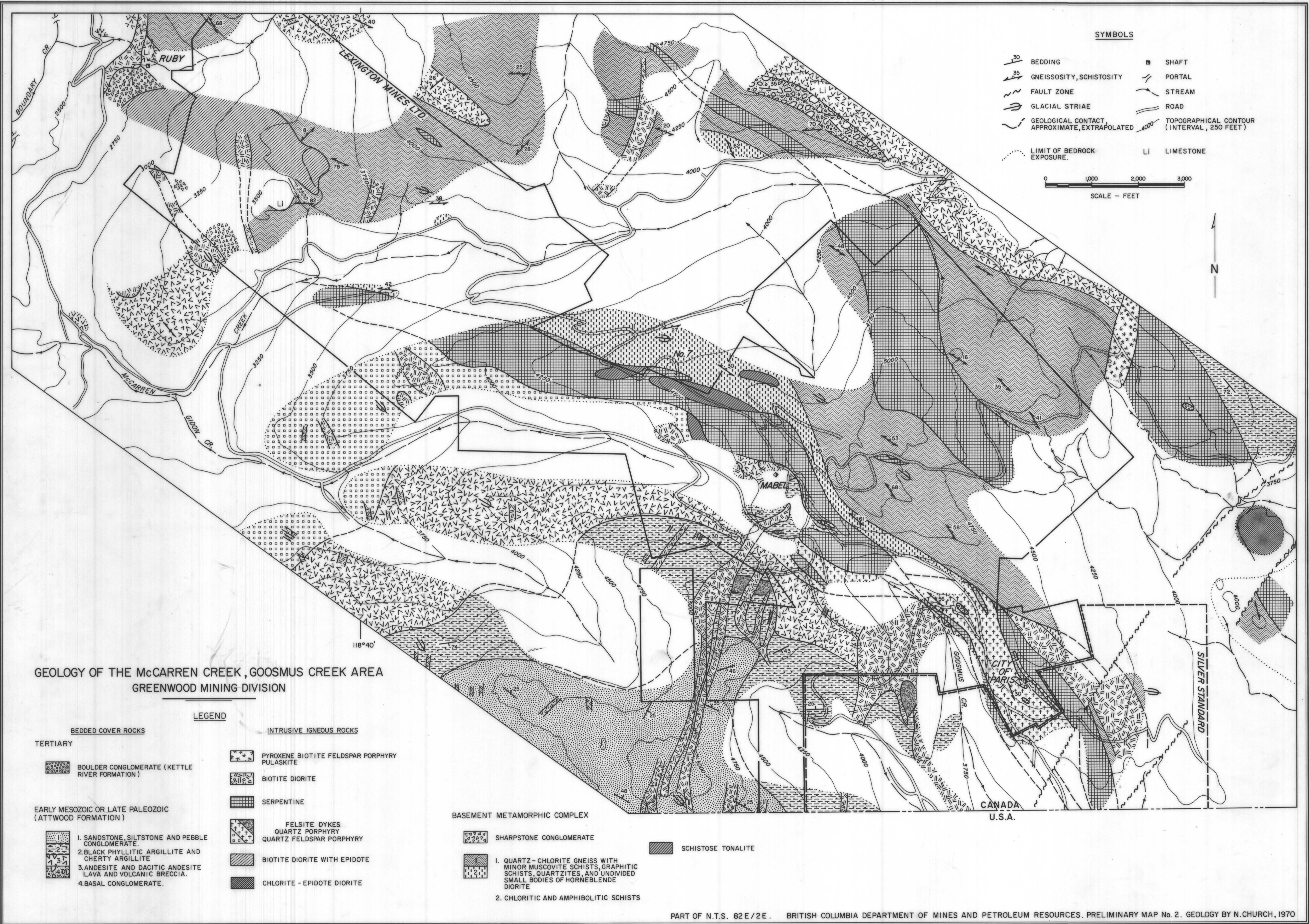


2



SYMBOLS

- BEDDING
- GNEISSOSITY, SCHISTOSITY
- FAULT ZONE
- GLACIAL STRIAE
- GEOLOGICAL CONTACT, APPROXIMATE, EXTRAPOLATED
- LIMIT OF BEDROCK EXPOSURE
- SHAFT
- PORTAL
- STREAM
- ROAD
- TOPOGRAPHICAL CONTOUR (INTERVAL, 250 FEET)
- Li LIMESTONE

0 1000 2000 3000
SCALE - FEET

**GEOLOGY OF THE MCCARREN CREEK, GOOSMUS CREEK AREA
GREENWOOD MINING DIVISION**

LEGEND

BEDDED COVER ROCKS		INTRUSIVE IGNEOUS ROCKS	
TERTIARY		PYROXENE BIOTITE FELDSPAR PORPHYRY PULASKITE	
BOULDER CONGLOMERATE (KETTLE RIVER FORMATION)		BIOTITE DIORITE	
EARLY MESOZOIC OR LATE PALEOZOIC (ATTWOOD FORMATION)		SERPENTINE	
1. SANDSTONE, SILTSTONE AND PEBBLE CONGLOMERATE.	FELSITE DYKES QUARTZ PORPHYRY QUARTZ FELDSPAR PORPHYRY	BASEMENT METAMORPHIC COMPLEX	
2. BLACK PHYLLITIC ARGILLITE AND CHERTY ARGILLITE.	BIOTITE DIORITE WITH EPIDOTE	SHARPSTONE CONGLOMERATE	SCHISTOSE TONALITE
3. ANDESITE AND DACITIC ANDESITE LAVA AND VOLCANIC BRECCIA.	CHLORITE - EPIDOTE DIORITE	1. QUARTZ - CHLORITE GNEISS WITH MINOR MUSCOVITE SCHISTS, GRAPHITIC SCHISTS, QUARTZITES, AND UNDIVIDED SMALL BODIES OF HORNEBLende DIORITE	
4. BASAL CONGLOMERATE.		2. CHLORITIC AND AMPHIBOLITIC SCHISTS	

PART OF N.T.S. 82 E / 2 E. BRITISH COLUMBIA DEPARTMENT OF MINES AND PETROLEUM RESOURCES. PRELIMINARY MAP No. 2. GEOLOGY BY N. CHURCH, 1970

FIGURE 1.

PM#2