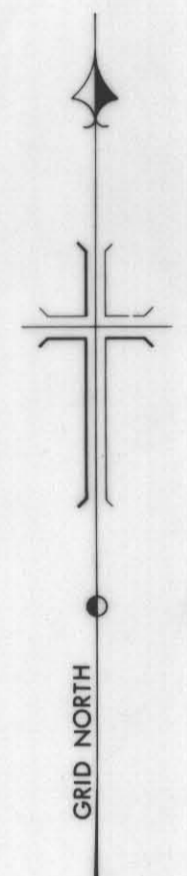


1 OF 3

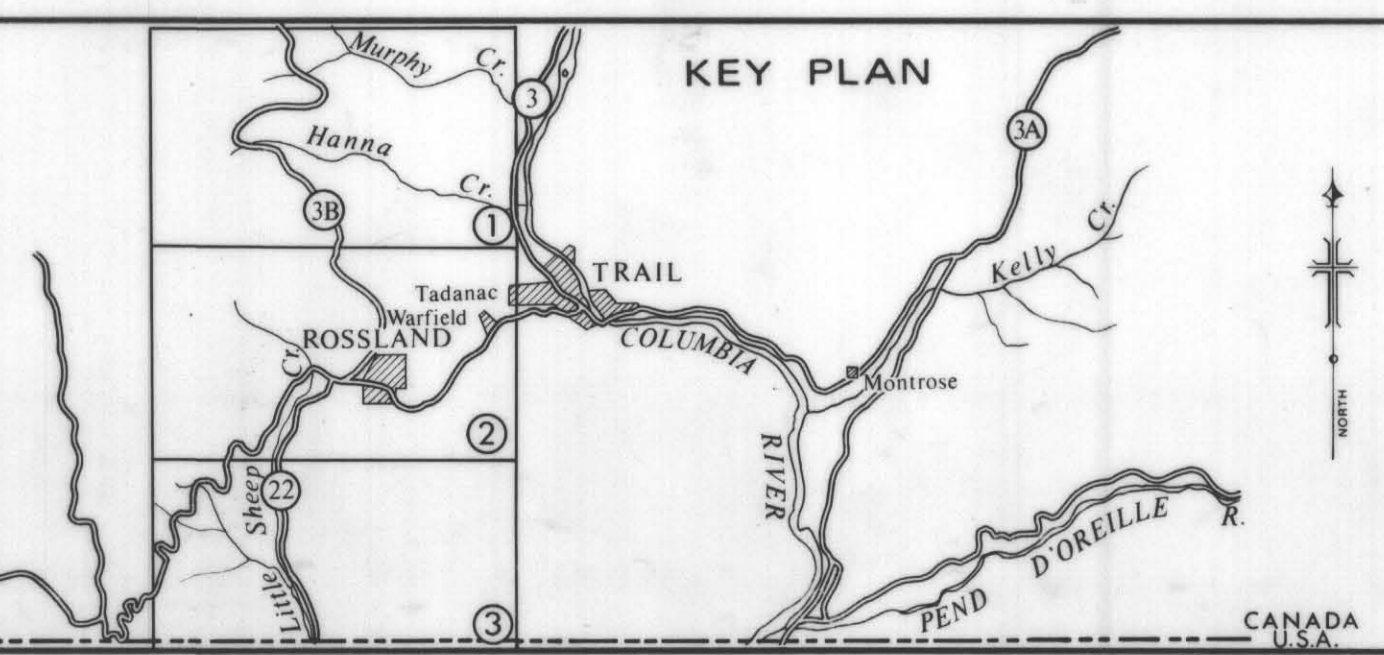
SEE SHEET 2

GEOLOGY BY J.T. FYLES, 1968-1969
 Preliminary compilation, July 1970
 Paper prints available from Chief, Mineralogical Branch,
 Department of Mines and Petroleum Resources,
 Victoria, B.C.
 Part of N.T.S. 82F/4W



GEOLOGICAL MAP OF THE ROSSLAND AREA

LEGEND	
[Symbol] AREAS OF LITTLE OR NO OUTCROP	[Symbol] ATTITUDE OF BEDDING
[Symbol] CORYELL INTRUSIONS	[Symbol] VEINS AND MINERALIZED JOINTS
[Symbol] 6 SYENITE AND MONZONITE OK VOLCANIC GROUP	[Symbol] BLOCK FAULT
[Symbol] 5 LATITE TRACHYTE AND INTERLAYERED CLASTIC ROCKS	[Symbol] THRUST FAULT
[Symbol] 4 SERPENTINE	[Symbol] ADIT
[Symbol] NELSON PLUTONIC ROCKS	[Symbol] PROSPECT
[Symbol] 3c RAINY DAY STOCK - QUARTZ MONZONITE	[Symbol] MOLYBDENITE OREBODIES OF RED MOUNTAIN MINE
[Symbol] 3b TRAIL BATHOLITH - GRANODIORITE	[Symbol] LIMIT OF GEOLOGICAL MAPPING
[Symbol] 3a ROSSLAND MONZONITE	
[Symbol] ROSSLAND GROUP	
[Symbol] 2f AUGITE PORPHYRY SILLS AND DYKES	
[Symbol] 2e GREEN VOLCANIC SANDSTONE, CONGLOMERATE, AND BRECCIA	
[Symbol] 2d MASSIVE GREENSTONE	
[Symbol] 2c GREY TO BLACK SILTSTONE (PARTLY HORNFELS)	
[Symbol] 2b BANDED HORNFELS	
[Symbol] 2a BRECCIA COMPLEX	
[Symbol] MOUNT ROBERTS FORMATION	
[Symbol] 1b DARK GREY SILTSTONE	
[Symbol] 1a CONGLOMERATE	



LEGEND	
[Symbol] TRIANGULATION STATION	[Symbol] CONTOURS & ELEVATIONS
[Symbol] BENCH MARK	[Symbol] CONTOURS INDEFINITE
[Symbol] HORIZONTAL CONTROL POINT	[Symbol] POWER LINE
[Symbol] VERTICAL CONTROL POINT	[Symbol] CUT
[Symbol] PHOTO CENTRE & FLIGHT No.	[Symbol] FILL
[Symbol] ROAD HARD TOP	[Symbol] FENCE
[Symbol] ROAD GRAVEL	[Symbol] GRAVEL PIT
[Symbol] ROAD JEEP	[Symbol] BUILDINGS
[Symbol] TRAIL	[Symbol] CULTIVATED AREA
[Symbol] RAILWAY	[Symbol] ORCHARD
[Symbol] CREEK	[Symbol] WOODED AREA
[Symbol] CREEK INTERMITTENT	[Symbol] SCRUB AREA
[Symbol] CREEK INDEFINITE	[Symbol] PIPE LINE
[Symbol] SWAMP	

NOTES	
GRID ORIGIN - REFERRED TO: 49°-117°	
DATUM OF ELEVATIONS: GEODETIC B.M.	
CONTOUR INTERVAL: 50 FEET	
AIR PHOTOS: B.C. GOV'T. 1952; REVISED B.C. GOV'T. 1960-61	
GROUND CONTROL BY: FROM EXISTING CONTROL	
RECONNAISSANCE MAP	
COMPILED BY: MULTIPLEX	CHECKED BY: [Signature]
TRACED BY: R.A.P.	REVISED:

BRITISH COLUMBIA
 DEPARTMENT OF LANDS, FORESTS
 AND WATER RESOURCES
 SURVEYS AND MAPPING BRANCH
 TOPOGRAPHIC DIVISION
ROSSLAND
 Scale: 1 Inch = 1000 Feet

DATE: JUNE 1970 PROJECT No. M 229
 PRELIMINARY MAP No. 4 SHEET 1
 Neg. No. 2898

4
2 OF 7



GEOLOGICAL MAP OF THE ROSSLAND AREA

LEGEND	
	AREAS OF LITTLE OR NO OUTCROP.
	CORYELL INTRUSIONS
	6 SYENITE AND MONZONITE
	OK VOLCANIC GROUP
	5 LATITE TRACHYTE AND INTERLAYERED CLASTIC ROCKS
	SERPENTINE
	4 SERPENTINE
	NELSON PLUTONIC ROCKS
	3c RAINY DAY STOCK - QUARTZ MONZONITE
	3b TRAIL BATHOLITH - GRANODIORITE
	3a ROSSLAND MONZONITE
	ROSSLAND GROUP
	2f AUGITE PORPHYRY SILLS AND DYKES
	2e GREEN VOLCANIC SANDSTONE, CONGLOMERATE, AND BRECCIA
	2d MASSIVE GREENSTONE
	2c GREY TO BLACK SILTSTONE (PARTLY HORNFELS)
	2b BANDED HORNFELS
	2a BRECCIA COMPLEX
	MOUNT ROBERTS FORMATION
	1b DARK GREY SILTSTONE
	1a CONGLOMERATE
	Attitude of BEDDING
	VEINS AND MINERALIZED JOINTS
	BLOCK FAULT
	THRUST FAULT
	ADIT
	PROSPECT
	MOLYBDENITE OREBODIES OF RED MOUNTAIN MINE
	LIMIT OF GEOLOGICAL MAPPING

KEY PLAN

SEE SHEET 1

GEOLOGY BY J.T. FYLES, 1968 - 1969
 Preliminary compilation, July 1970
 Paper prints available from Chief, Mineralogical Branch,
 Department of Mines and Petroleum Resources,
 Victoria, B.C.
 Part of N.T.S. 82F/4W

LEGEND

	TRIANGULATION STATION		CONTOURS & ELEVATIONS
	BENCH MARK		CONTOURS INDEFINITE
	HORIZONTAL CONTROL POINT		POWER LINE
	VERTICAL CONTROL POINT		CUT
	PHOTO CENTRE & FLIGHT No.		FILL
	ROAD HARD TOP		FENCE
	ROAD GRAVEL		GRAVEL PIT
	ROAD JEEP		BUILDINGS
	TRAIL		CULTIVATED AREA
	RAILWAY		ORCHARD
	CREEK		WOODED AREA
	CREEK INTERMITTENT		SCRUB AREA
	CREEK INDEFINITE		PIPE LINE
	SWAMP		

NOTES

GRID ORIGIN - REFERRED TO: 49° - 117°
 DATUM OF ELEVATIONS: GEODETIC B.M.
 CONTOUR INTERVAL: 50 FEET
 AIR PHOTOS: B.C. GOV'T. 1952; REVISED B.C. GOV'T. 1960-61
 GROUND CONTROL BY: FROM EXISTING CONTROL
 RECONNAISSANCE MAP

COMPILED BY: MULTIPLEX
 TRACED BY: RAP

CHECKED BY: [Signature]
 REVISED:

BRITISH COLUMBIA
 DEPARTMENT OF LANDS, FORESTS
 AND WATER RESOURCES
 SURVEYS AND MAPPING BRANCH
 TOPOGRAPHIC DIVISION

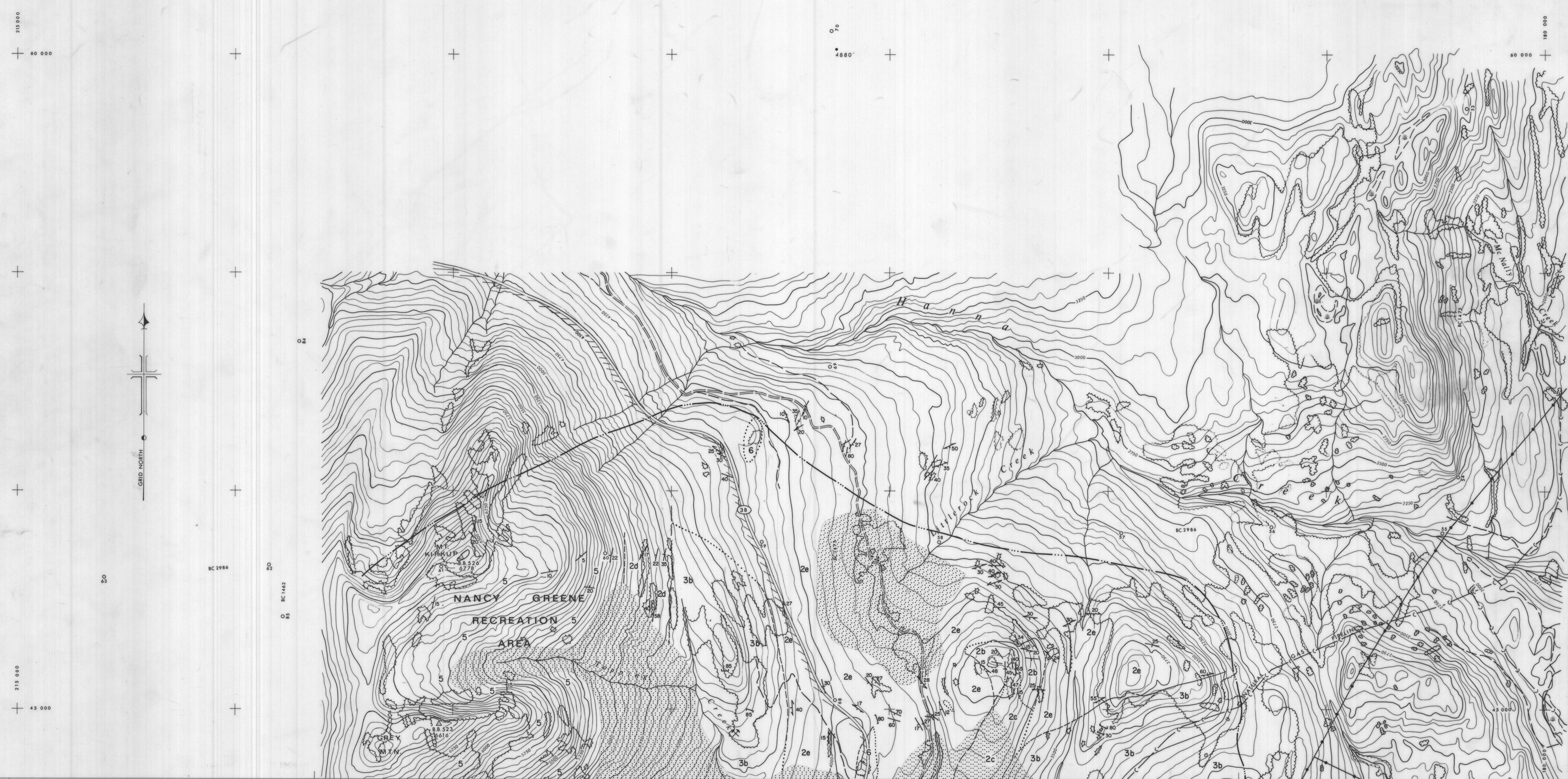
ROSSLAND

Scale: 1 Inch = 1000 Feet

DATE: JUNE 1970
 PROJECT No. M 229

PRELIMINARY MAP No. 4
 SHEET 2
 Neg. No. 2899

36F 3



GEOLOGICAL MAP OF THE ROSSLAND AREA
(LEGEND SEE SHEET 1)

KEY PLAN

SEE SHEET 1

GEOLOGY BY J.T. FYLES, 1968-1969
Preliminary compilation, July 1970
Paper prints available from Chief, Mineralogical Branch,
Department of Mines and Petroleum Resources,
Victoria, B.C.
Part of N.T.S. 82F/4W

LEGEND

- | | | | |
|-----------------------------------------------------------------------------------------------------------------------------------------------------------------------------------------------------------------------------------------------------|------------------------------------------------------|-------------------------------------------------------------------------------------------------------------------------------------------------------------------------------------------------|--------------------------------------------------|
| TRIANGULATION STATION
BENCH MARK
HORIZONTAL CONTROL POINT
VERTICAL CONTROL POINT
PHOTO CENTRE & FLIGHT No.
ROAD HARD TOP
ROAD GRAVEL
ROAD JEEP
TRAIL
RAILWAY
CREEK
CREEK INTERMITTENT
CREEK INDEFINITE
SWAMP |

 | CONTOURS & ELEVATIONS
CONTOURS INDEFINITE
POWER LINE
CUT
FILL
FENCE
GRAVEL PIT
BUILDINGS
CULTIVATED AREA
ORCHARD
WOODED AREA
SCRUB AREA
PIPELINE |

 |
|-----------------------------------------------------------------------------------------------------------------------------------------------------------------------------------------------------------------------------------------------------|------------------------------------------------------|-------------------------------------------------------------------------------------------------------------------------------------------------------------------------------------------------|--------------------------------------------------|

NOTES

GRID ORIGIN - REFERRED TO: 49°-117°
DATUM OF ELEVATIONS: GEODETIC B.M.
CONTOUR INTERVAL: 50 FEET
AIR PHOTOS: B.C. GOV'T. 1952; REVISED B.C. GOV'T. 1960-61
GROUND CONTROL BY: FROM EXISTING CONTROL
RECONNAISSANCE MAP

COMPILED BY: MULTIPLEX
TRACED BY: R.A.P.
CHECKED BY: J.S.
REVISED:

BRITISH COLUMBIA
DEPARTMENT OF LANDS, FORESTS
AND WATER RESOURCES
SURVEYS AND MAPPING BRANCH
TOPOGRAPHIC DIVISION

ROSSLAND

Scale: 1 Inch = 1000 Feet

DATE: JUNE 1970
PROJECT No. M 229