

British Columbia Department of Mines and Petroleum Resources  
PRELIMINARY MAP NO. 11  
GEOLOGY OF THE BUCK CREEK AREA  
OMINECA MINING DIVISION  
GEOLOGY BY B. N. CHURCH  
MAY, 1973

126° 40' 30' 10' 126° 00' 50' 40' 125° 34' 54° 30'

**BEDDED ROCKS**

**MIOCENE**  
a POPLAR BUTTES VOLCANIC ROCKS, COLUMNAR OLIVINE BASALT (21.0±1.1 m.y.)

**Eocene**  
BUCK CREEK VOLCANIC ROCKS  
b PARROTT MOUNTAIN PHASE, MAINLY ANDESITE BRECCIA  
c SWANS LAKE PHASE, MAINLY BASALTIC LAVA  
d HOUSTON PHASE, APHANITIC ANDESITE AND DACITE LAVAS AND VOLCANIC BRECCIA, MINOR BASALT (47.3±1.6 m.y.)

c-1 GOOSLY LAKE VOLCANIC ROCKS, MAINLY BIOTITE - PYROXENE - PLAGIOCLASE TRACHY ANDESITE LAVAS AND THICK SILLS OR LAVA FLOWS AND SMALL STOCKS OF SIMILAR ROCK (48.0±1.8 m.y.) / LOCAL FELDSPATHIC ANDESITIC LAVAS AND BRECCIAS

**UPPER CRETACEOUS**  
g TIP TOP HILL VOLCANIC ROCKS, MAINLY BIOTITE - HORNBLende ANDESITE AND ANDESITIC DACITE LAVAS AND PYROCLASTIC ROCKS (75.8±2.7 m.y.)  
h ACID VOLCANIC ROCKS, MAINLY RHYOLITE LAVA IN THE TCHESINKUT LAKE AND BULKLEY LAKE AREAS AND RELATED QUARTZ PORPHYRY INTRUSIONS ON OKUSYELDA HILL (76.5±3.0 m.y.)

**EARLY AND MIDDLE MESOZOIC**  
i ACID AND INTERMEDIATE LAVAS AND PYROCLASTIC ROCKS, SOME ARGILLITE, SANDSTONE, AND CONGLOMERATE

**IGNEOUS INTRUSIONS**  
j SYENOMONZONITE ALKALIC GABRO STOCKS: PARROTT LAKE INTRUSION (48.4±1.5 m.y.); GOOSLY LAKE INTRUSION (48.3±3.0 m.y.)  
k BIOTITE GRANITIC STOCK, GOOSLY AREA (56.2±3.0 m.y.) AND QUARTZ FELDSPAR PORPHYRY AT DUNGATE CREEK

m MINE HILL MICRODIORITE SILLS AND DYKES (74.0±1.0 m.y.)  
n BIOTITE - PLAGIOCLASE PORPHYRY STOCK AT DUCK LAKE AND RELATED QUARTZ FELDSPAR PORPHYRY INTRUSIONS (76.0±2.0 m.y.)

o BASIC AND INTERMEDIATE STOCKS AT BOB CREEK AND TSICHGASS LAKE  
p TOPELY INTRUSIONS AND GRANITE NEAR BURNS LAKE

**MINERAL PROPERTIES**

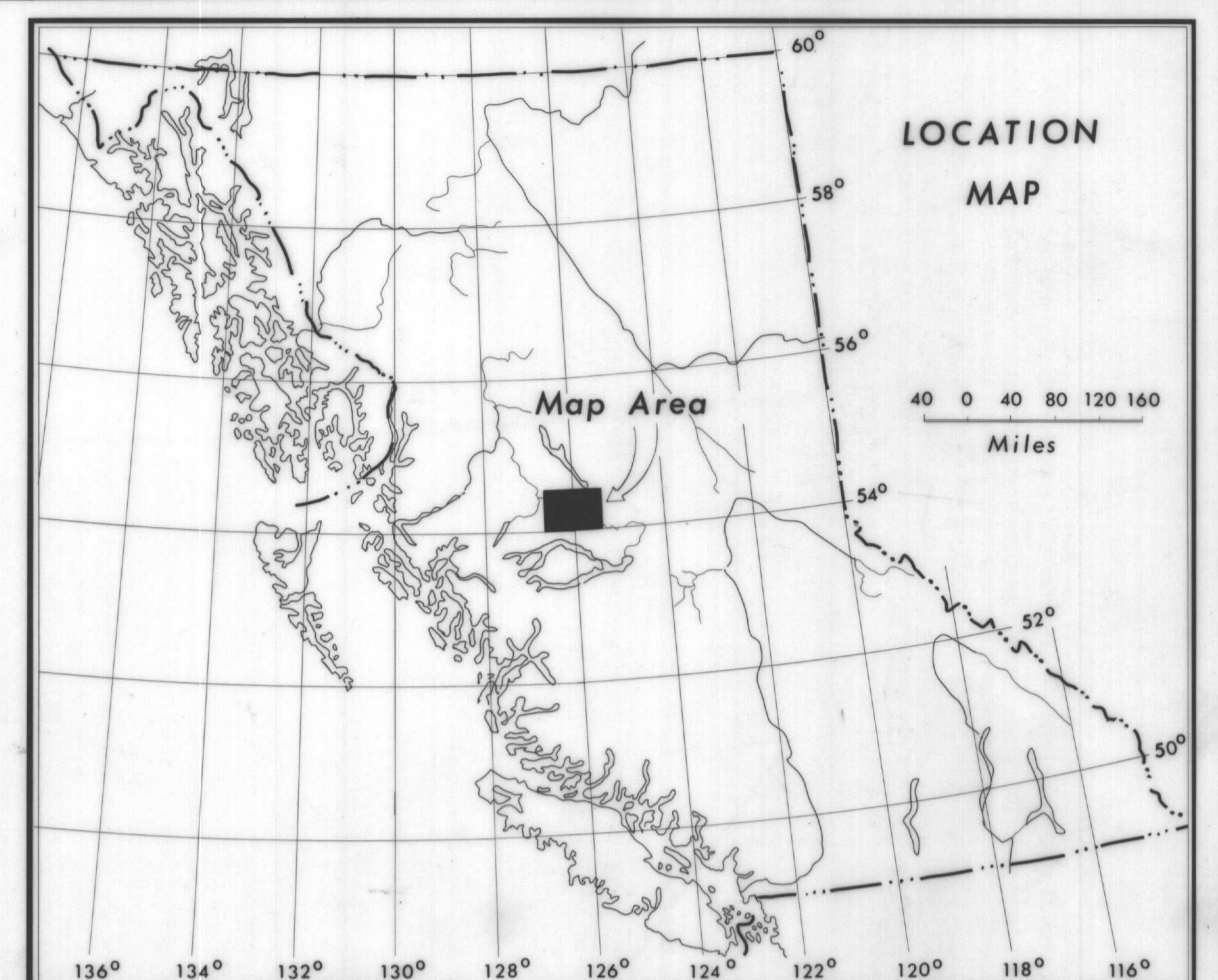
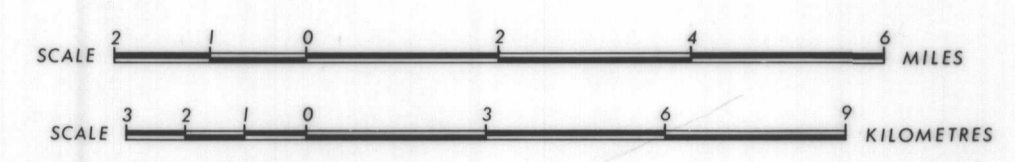
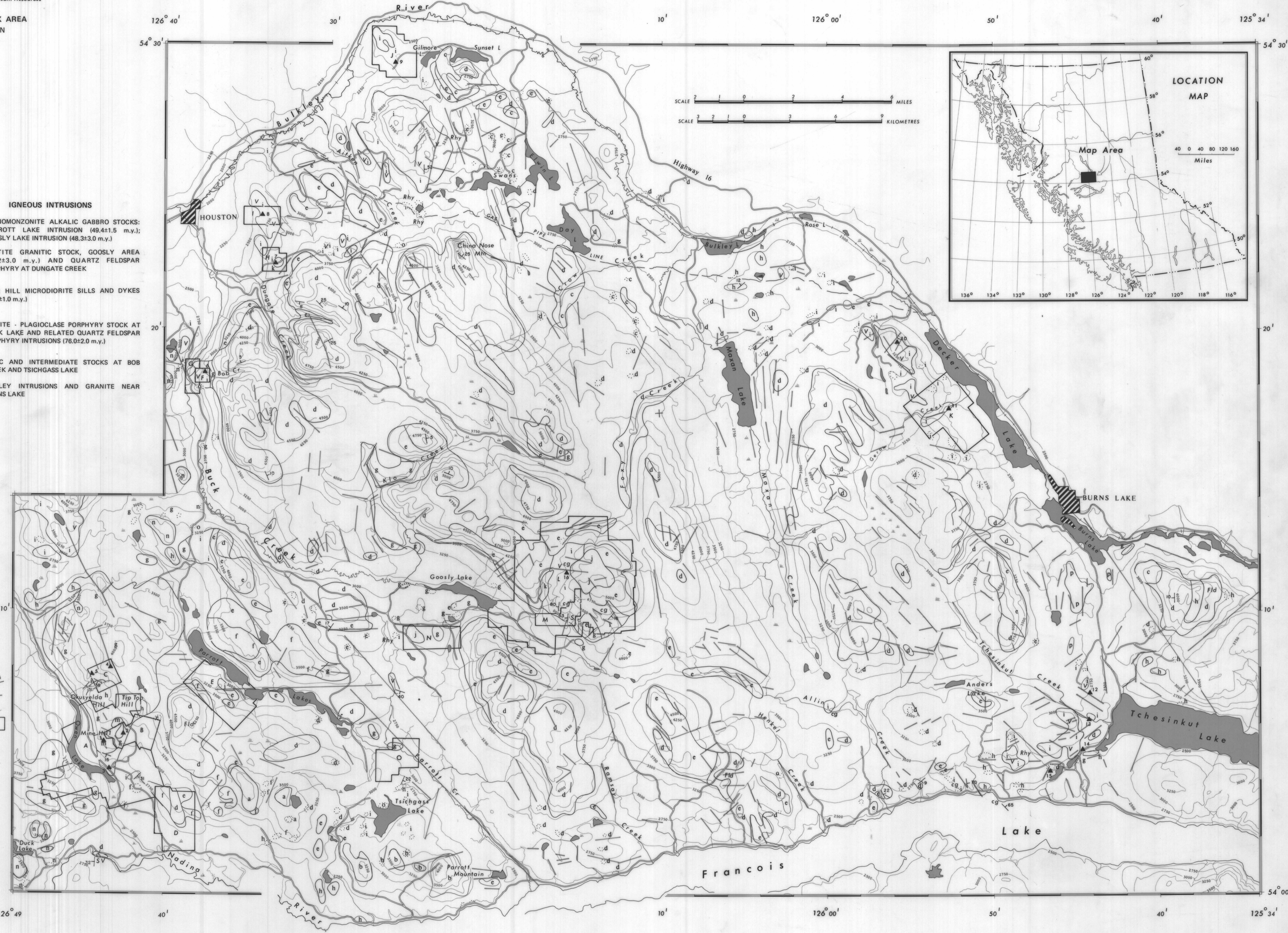
- A SILVER QUEEN - BRADINA JOINT VENTURE
- B DIAMOND BELLE - FRONTIER EXPLORATION LIMITED
- C WINN - BANARAJA MINERALS, LIMITED
- D SPOOK - LOBELL MINES LIMITED
- E PAR - CANADIAN SUPERIOR EXPLORATION LIMITED
- F ROD, DOT - E. KOBILASKI
- G LUKY - AMERICAN SMELTING AND REFINING COMPANY
- H HOT - CHINOOK RESOURCES LTD.
- I DEER - RIO TINTO CANADIAN EXPLORATION LIMITED
- J BORNITE - E. G. STRIMBOLD
- K' CRE, DE, MO - DECKER LAKE MINES LIMITED
- L SAM GOOSLY - KENCO EXPLORATIONS, (WESTERN) LIMITED
- M GAUL - MAVERICK MOUNTAIN RESOURCES LIMITED
- N WIL - LEWES RIVER MINES LTD.
- O SEAN - KENCO EXPLORATIONS, (WESTERN) LIMITED

**MINERAL SHOWINGS**

- 1 - WRINCH VEIN SYSTEM (Au, Ag, Cu, Pb, Zn)
- 2 - COLE VEIN SYSTEM (Au, Ag, Cu, Pb, Zn)
- 3 - CHISHOLM VEIN SYSTEM (Ag, Pb, Zn)
- 4 - WINNIVIK HILL VEINS (Pb, Zn)
- 5 - NEW DISCOVERY VEINLETS (Zn)
- 6 - BOB CREEK DISSEMINATIONS (Au)
- 7 - DUNGATE CREEK DISSEMINATIONS (Cu)
- 8 - MUD LAKE DISSEMINATIONS IN SHEARS (Cu)
- 9 - GILMORE LAKE MINERALIZED SHEARS (Cu)
- 10 - BOO MOUNTAIN VEIN (Cu)
- 11 - GEROW CREEK DISSEMINATIONS (Cu)
- 12 - BALD HILL QUARTZ VEINS (Au)
- 13 - MONA VEINS (Ag, Cu, Pb, Zn)
- 14 - OAKLA VEINLETS (Au)
- 15 - FRANCOIS LAKE VEINLETS (Asphaltum, Phosphate)
- 16 - GOOSLY REPLACEMENTS (Ag, Cu)

**SYMBOLS**

- BEDDING ATTITUDE - HORIZONTAL, INCLINED
- TOPOGRAPHIC LINEAMENT
- TOPOGRAPHIC CONTOUR (250 feet)
- PROPERTY BOUNDARY
- MINERAL SHOWING
- ROAD
- RAILWAY
- OUTCROP BOUNDARY
- LAKE
- STREAM
- SWAMP
- SHALE, SANDSTONE
- VOLCANIC ROCKS
- CONGLOMERATE
- FELDSPATHIC BUCK CREEK VOLCANIC ROCKS
- RHYOLITE



126° 49' 40' 10' 126° 00' 50' 40' 125° 34' 54° 00'