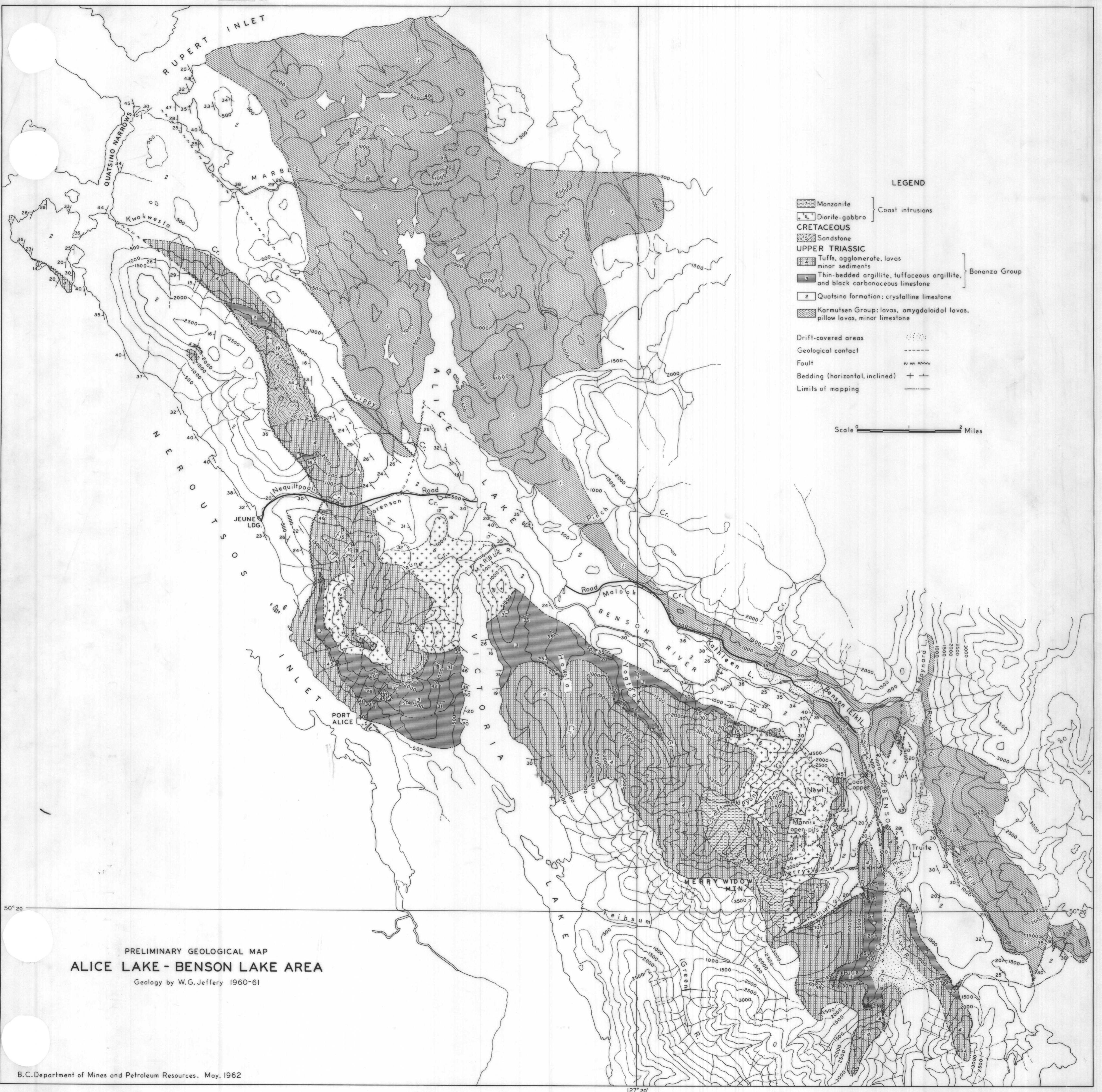


ALICE LAKE - BENSON RIVER (part of 1557)



LEGEND

- Monzonite
- Diorite-gabbro } Coast intrusions
- CRETACEOUS**
- Sandstone
- UPPER TRIASSIC**
- Tuffs, agglomerate, lavas, minor sediments
- Thin-bedded argillite, tuffaceous argillite, and black carbonaceous limestone } Bonanza Group
- Quatsino formation: crystalline limestone
- Karmutsen Group: lavas, amygdaloidal lavas, pillow lavas, minor limestone
- Drift-covered areas
- Geological contact
- Fault
- Bedding (horizontal, inclined)
- Limits of mapping

Scale 0 1 2 Miles

PRELIMINARY GEOLOGICAL MAP  
ALICE LAKE - BENSON LAKE AREA  
Geology by W.G. Jeffery 1960-61

127° 20'