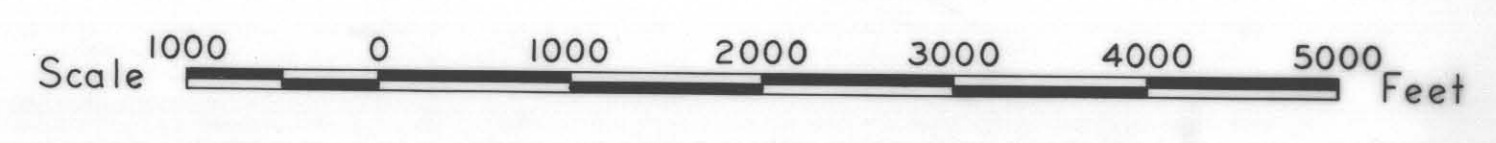


**LEGEND**

- POST-GUICHON INTRUSIONS AND STRATIFIED ROCKS**
- 8 Kamloops Group (early Tertiary): flows and breccias, mainly andesite and local underlying tuffaceous sedimentary rocks; light-coloured andesite intrusions of unknown age; dacite tuff north of O.K. Road of unknown age.
- ROCKS OF THE GUICHON BATHOLITH**
- 7 Porphyries, mainly dacite, variously of pre- and post-breccia ages.
  - 6 Mainly breccia
  - 5 Quartz porphyry, dacite and rhyolite, known or assumed to produce breccia.
  - 4 Bethsaida granodiorite
  - 3 Bethlehem (younger) quartz diorite, quartz monzonite and granite.
  - 2 Beaver quartz diorite
  - 1 Guichon (older) quartz diorite
- Outcrop area
- Geological contact, defined, inferred
- Fault, defined, inferred
- ▲ Attitude of volcanic strata
- Shaft
- Y Adit portal
- Outline of mineralized zones and orebodies
- Road, bulldozer trench
- Disused tramway
- Drill-hole
- Claim boundary (not shown)
- Property boundary in 1958 (not shown)
- Swamp or marsh
- Creek or gully
- cu Native copper
- bn Bornite
- cp Chalcopyrite
- mal Malachite
- py Pyrite
- mo Molybdenite
- sp Specular hematite
- tm Tourmaline

**GEOLOGICAL MAP**  
OF THE  
**HIGHLAND VALLEY AREA**  
BRITISH COLUMBIA

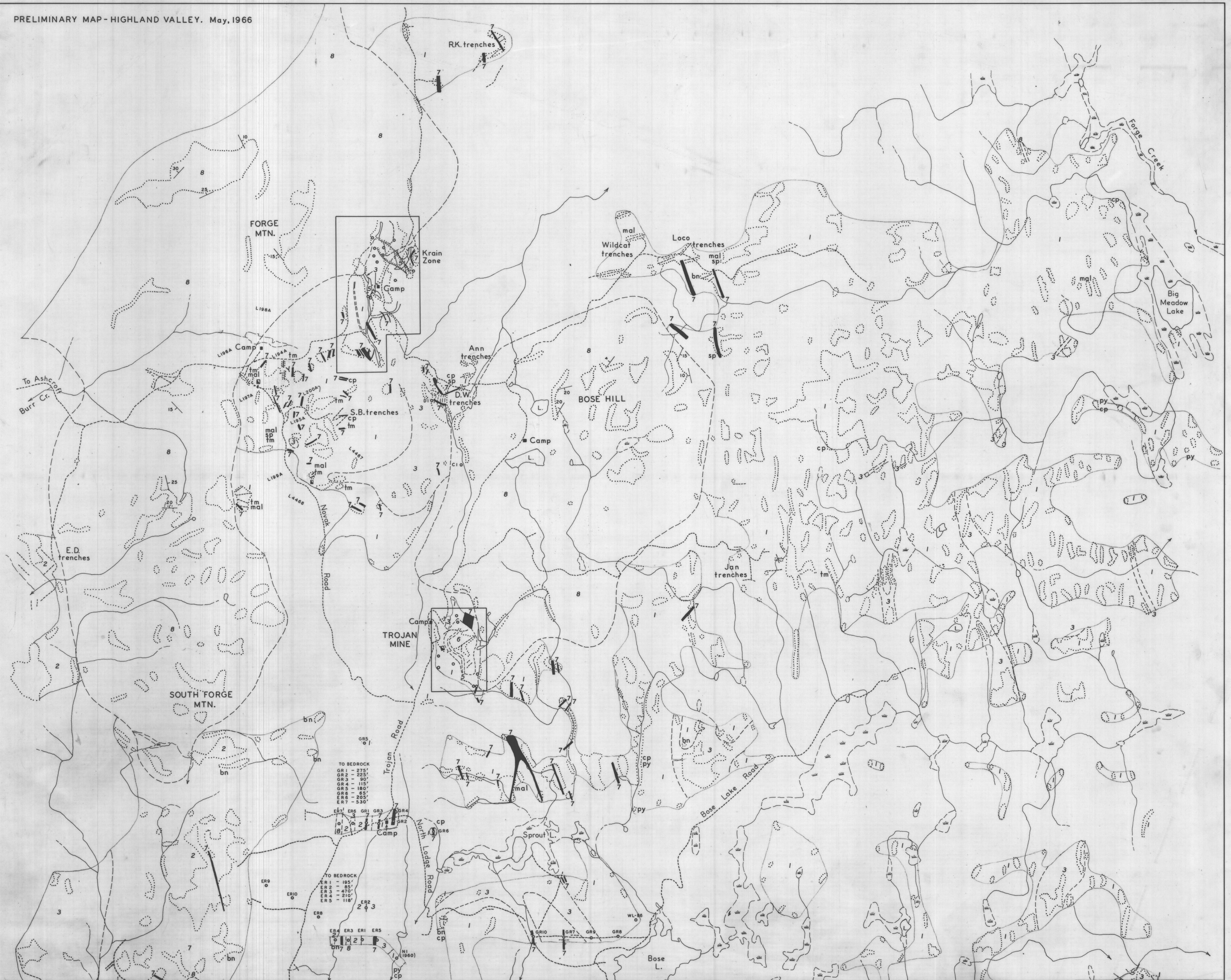
Geology by J.M. Carr, 1957-62 and R. Lee, 1958



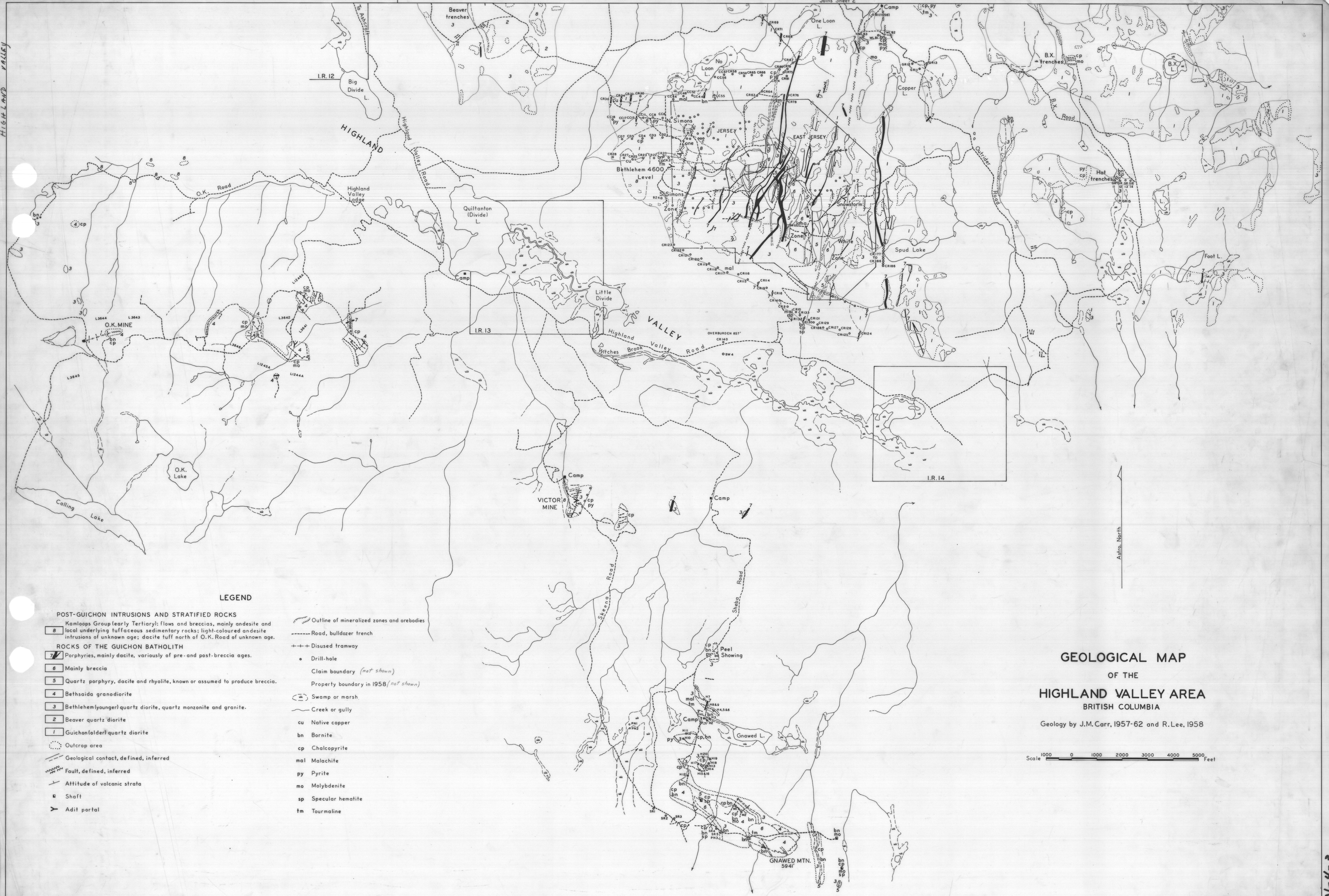
Astro. North

N-4-3









LEGEND

- POST-GUICHON INTRUSIONS AND STRATIFIED ROCKS**
- 8 Kamloops Group (early Tertiary): flows and breccias, mainly andesite and local underlying tuffaceous sedimentary rocks; light-coloured andesite intrusions of unknown age; dacite tuff north of O.K. Road of unknown age.
- ROCKS OF THE GUICHON BATHOLITH**
- 7 Porphyries, mainly dacite, variously of pre- and post-breccia ages.
  - 6 Mainly breccia
  - 5 Quartz porphyry, dacite and rhyolite, known or assumed to produce breccia.
  - 4 Bethsaida granodiorite
  - 3 Bethlehem (younger) quartz diorite, quartz monzonite and granite.
  - 2 Beaver quartz diorite
  - 1 Guichon (older) quartz diorite
- Outcrop area
- Geological contact, defined, inferred
- Fault, defined, inferred
- Attitude of volcanic strata
- Shaft
- Adit portal
- Outline of mineralized zones and arebodies
- Road, bulldozer trench
- Disused tramway
- Drill-hole
- Claim boundary (not shown)
- Property boundary in 1958 (not shown)
- Swamp or marsh
- Creek or gully
- cu Native copper
- bn Bornite
- cp Chalcopyrite
- mal Malachite
- py Pyrite
- mo Molybdenite
- sp Specular hematite
- fm Tourmaline

**GEOLOGICAL MAP**  
OF THE  
**HIGHLAND VALLEY AREA**  
BRITISH COLUMBIA

Geology by J.M. Carr, 1957-62 and R. Lee, 1958



▲ True North



