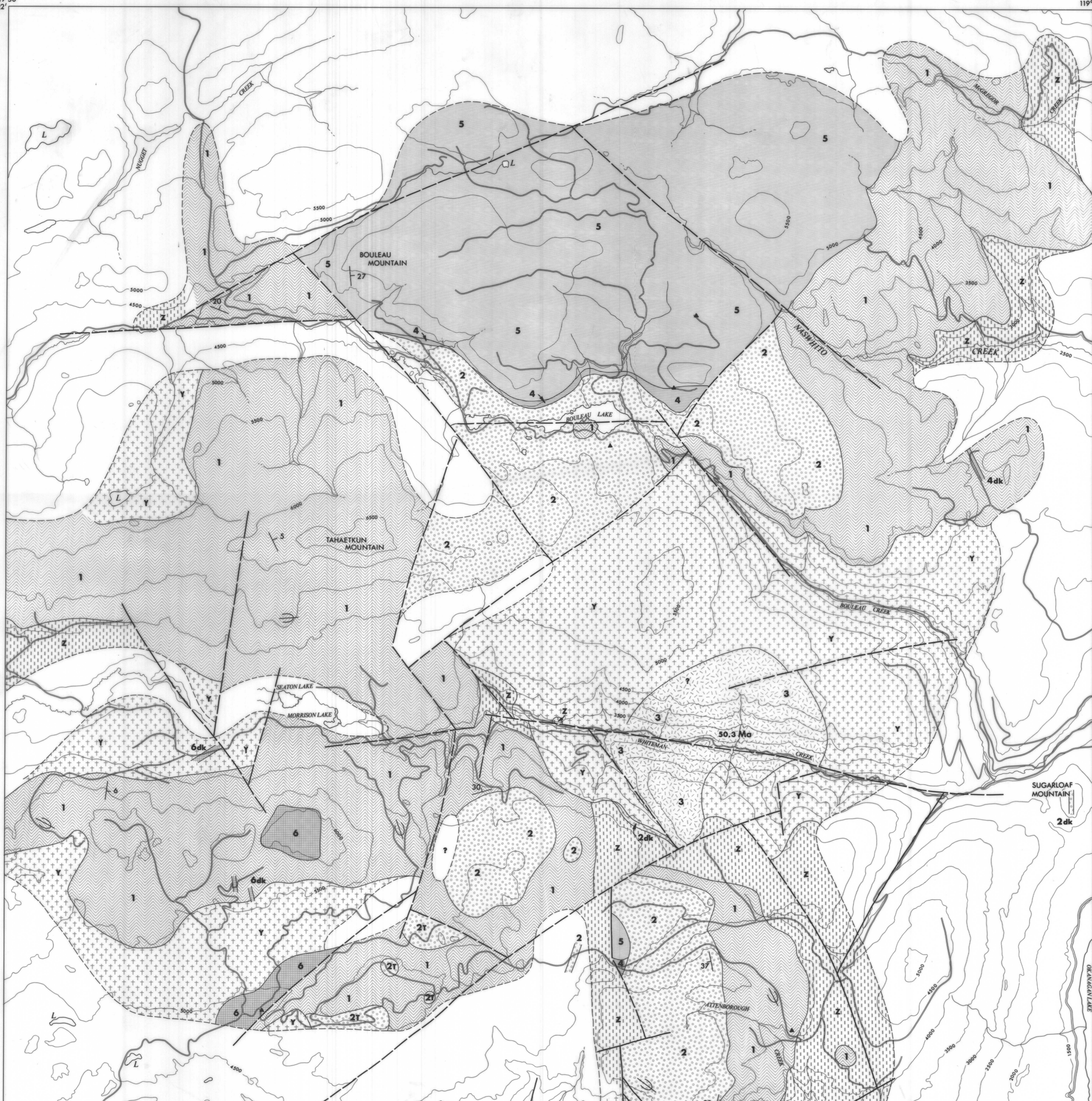


PRELIMINARY MAP #37

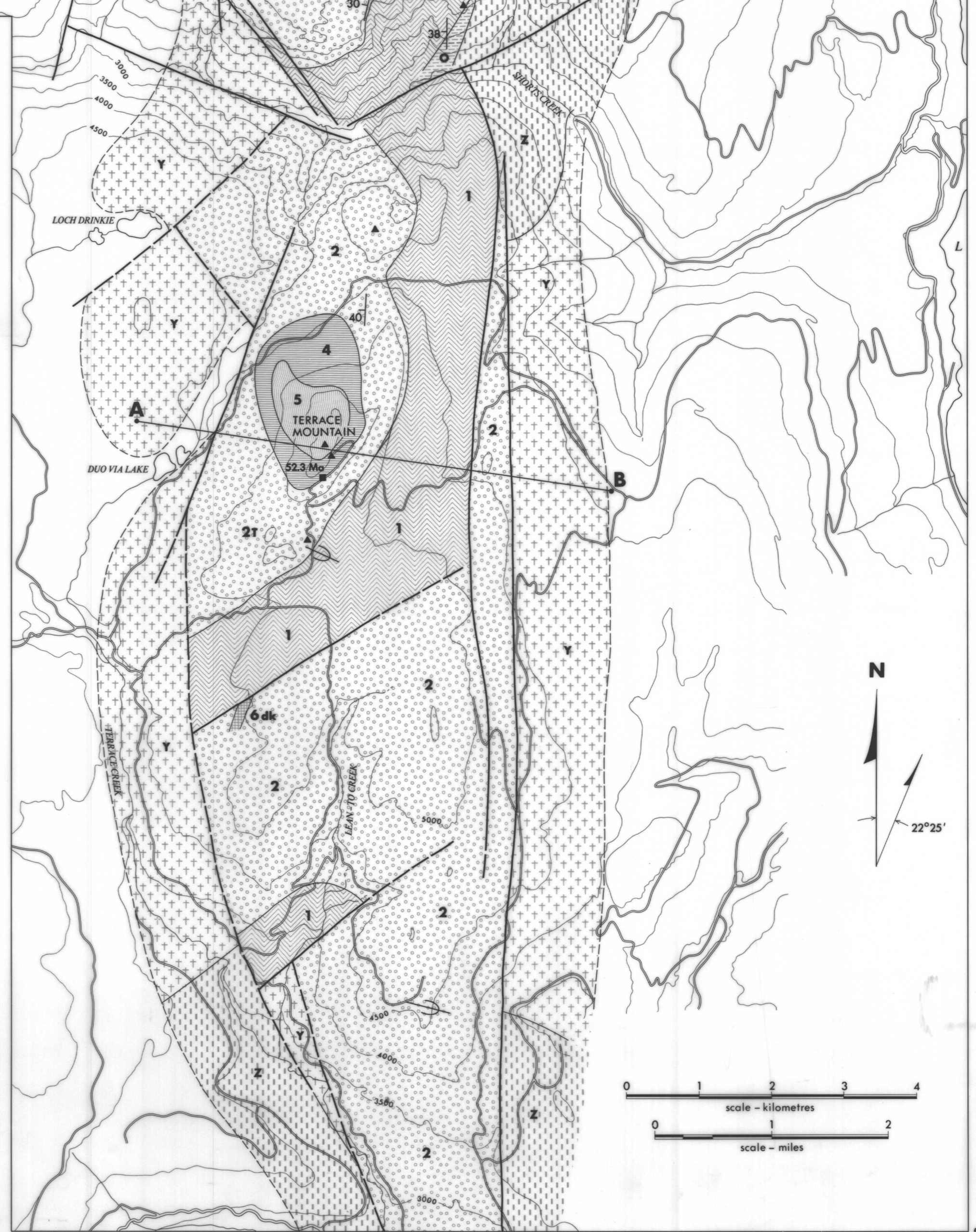
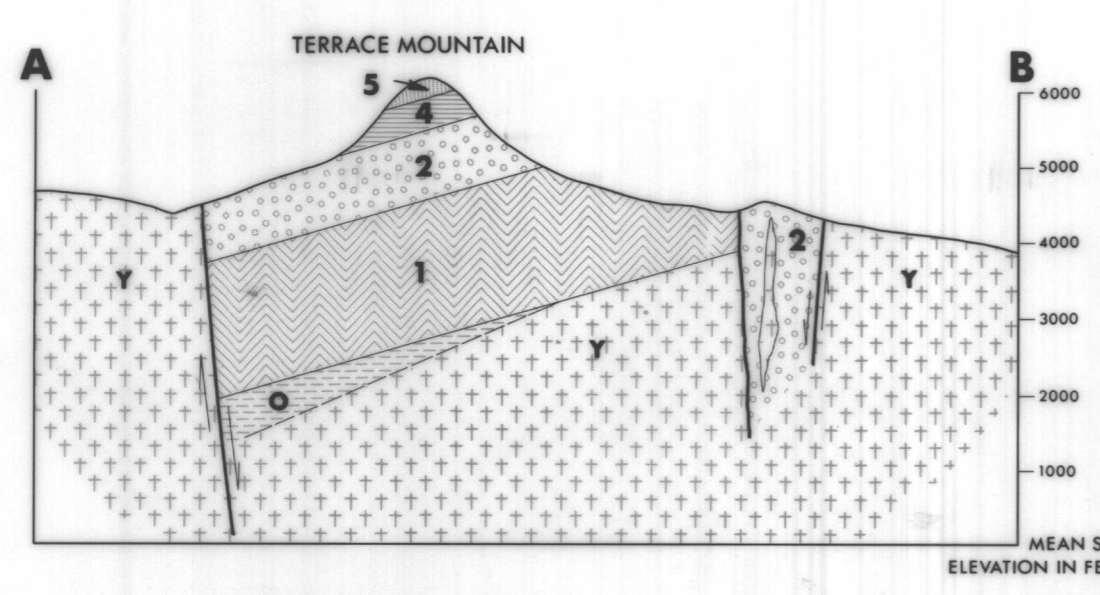
119°50' 50°22' 119°30' 50°22'



Province of British Columbia
 Ministry of Energy, Mines and Petroleum Resources
 REVISED PRELIMINARY MAP 37
GEOLOGY OF THE TERRACE MOUNTAIN TERTIARY OUTLIER
 BY B. N. CHURCH
 December 1980

- LEGEND**
- | | |
|---|--|
| MIOCENE ? | Eocene (CONTINUED) |
| 6 FEEDER DYKES AND REMNANTS OF OLIVINE BASALT LAVA ON HILLSIDES AND RIDGE TOPS | 1 MAINLY THINLY BEDDED ANDESITE AND DACITE LAVA AND BRECCIA AND SOME OLIVINE BASALT |
| Eocene | 2 BROWN AND GREY SANDSTONES AND SHALES AND COARSE POLYMYCTIC CONGLOMERATE |
| 5 FINE-GRAINED GREY AND BROWN DACITE AND ANDESITE LAVA AND BRECCIA | PRE-TERTIARY |
| 4 RHYOLITE TUFF BRECCIA AND GLASSY LAVA | Y MAINLY GRANITIC INTRUSIONS |
| 3 SYENITE AND MONZONITE, FEEDER TO MARRON VOLCANIC ROCKS | Z MAINLY BEDDED ROCKS INCLUDING METAVOLCANIC ROCKS, LIMESTONE SCHISTS, CHERT, AND QUARTZITES |
| 2 FELDSPAR PORPHYRY ANDESITIC LAVA LIKE KITLEY MEMBER AND (T) HORNBLENDE TRACHYTE ? | |

- SYMBOLS**
- DRIFT-COVERED AREA
 - GEOLOGICAL BOUNDARY: APPROXIMATE
 - BEDDING: HORIZONTAL, INCLINED
 - FAULT: APPROXIMATE, ASSUMED
 - TOPOGRAPHICAL CONTOUR (INTERVAL, 500 FEET)
 - STRUCTURE SECTION
 - STREAM
 - MAIN ROAD
 - CHEMICAL ANALYSIS STATION
 - K/A: SPECIMEN LOCALITY
 - DYKE
 - LAKE



TM 37
121