



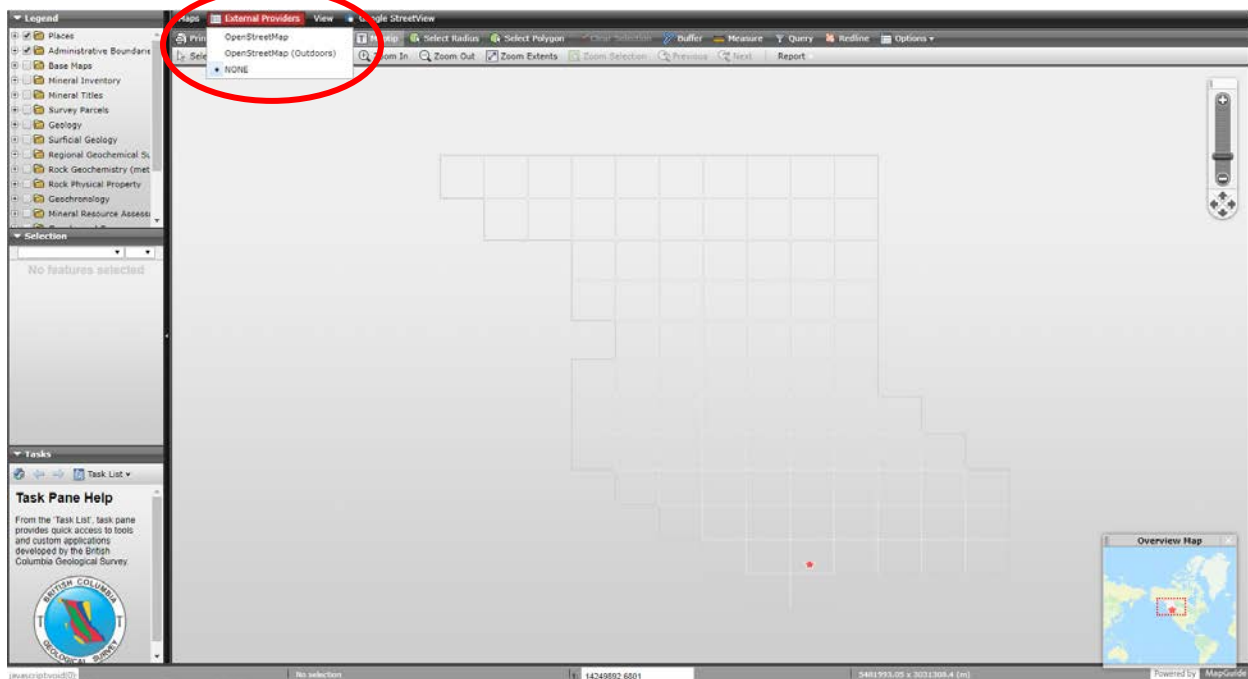
Generating a Claim Map in MapPlace 2

As a replacement for the ARIS MapBuilder, this guide outlines the steps to generate a Claim Map in MapPlace2 using the Tasks, Redline, and Quick Plot tools.

For information on the operation and tools of MapPlace2, please refer to the MapPlace 2 User Guide ([IC2017-03](#)).

Step 1: Launch [MapPlace 2](#)

Step 2: Under External Providers – Select NONE



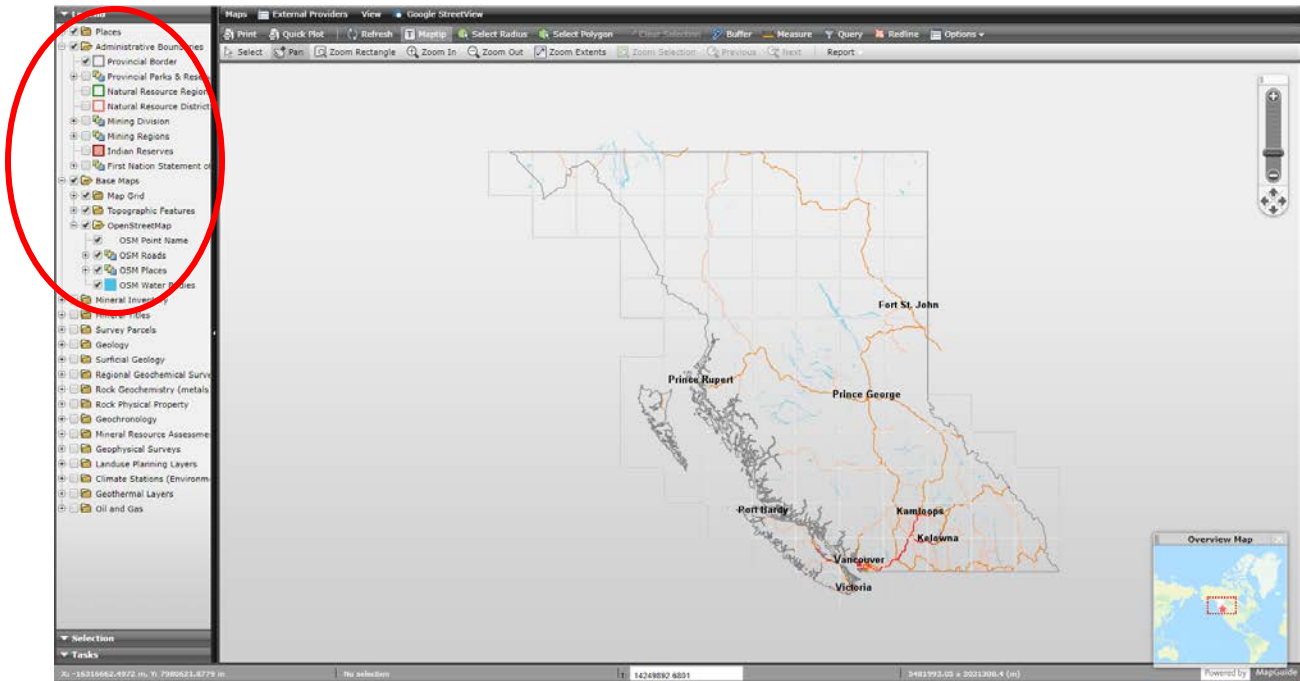
Step 3: Legend

Expand Administrative Boundaries (click on + box)

Turn on Provincial Border (click box to generate checkmark)

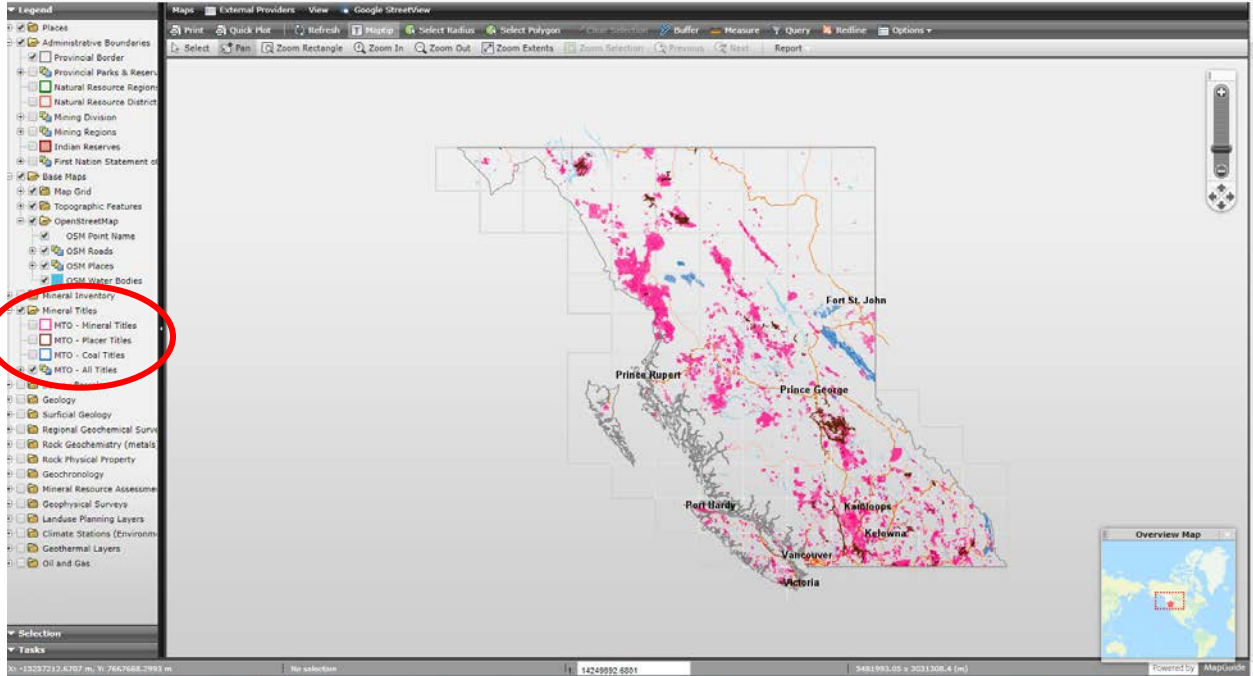
Expand and Turn on Base Maps

Expand and Turn on Open Street Map (may take a few moments to load)

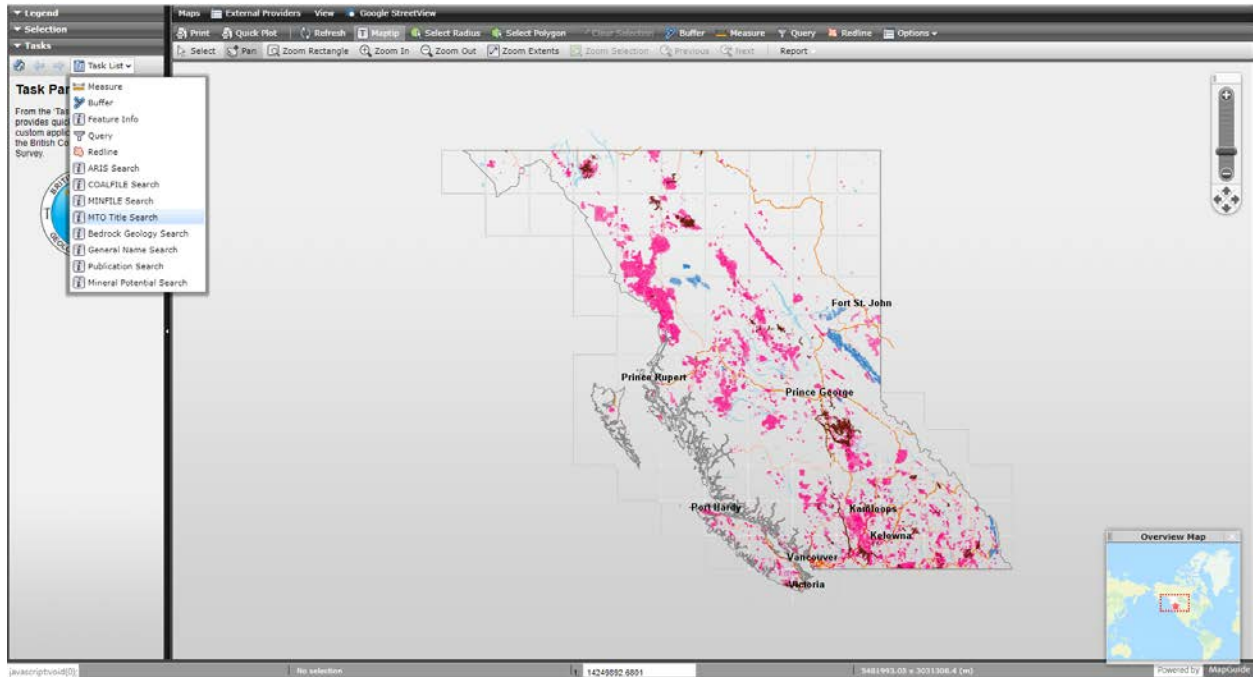


Expand and Turn on Mineral Titles

Zoom to general property location area and Turn on MTO – Title Number (labels)
– layer will appear in legend once zoomed in to appropriate level



Step 4: Tasks – Task List – MTO Title Search



Tenure Number: **Enter all claim numbers, separated by commas, click 'Go!'**

Tenure number
 (One or more. For example: 222198,222491,592371)

Equal or W ▾

Go!

Results List: **click 'Zoom To'** on any tenure

Legend

Selection

Tasks

MTO query result updated. There are 6 items returned from the query.

[Go Back](#)

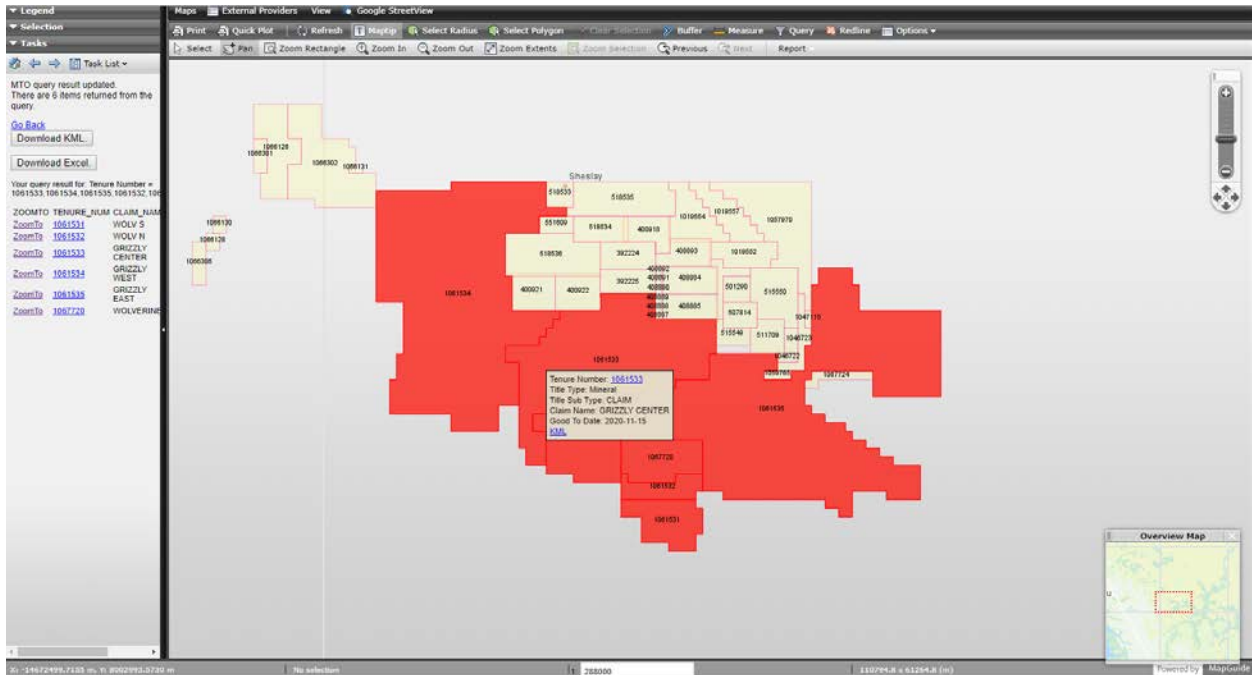
[Download KML.](#)

[Download Excel.](#)

Your query result for: Tenure Number = 1061533,1061534,1061535,1061532,1061531,1067720

ZOOMTO	TENURE_NUM	CLAIM_NAME
ZoomTo	1061531	WOLV S
ZoomTo	1061532	WOLV N
ZoomTo	1061533	GRIZZLY CENTER
ZoomTo	1061534	GRIZZLY WEST
ZoomTo	1061535	GRIZZLY EAST
ZoomTo	1067720	WOLVERINE

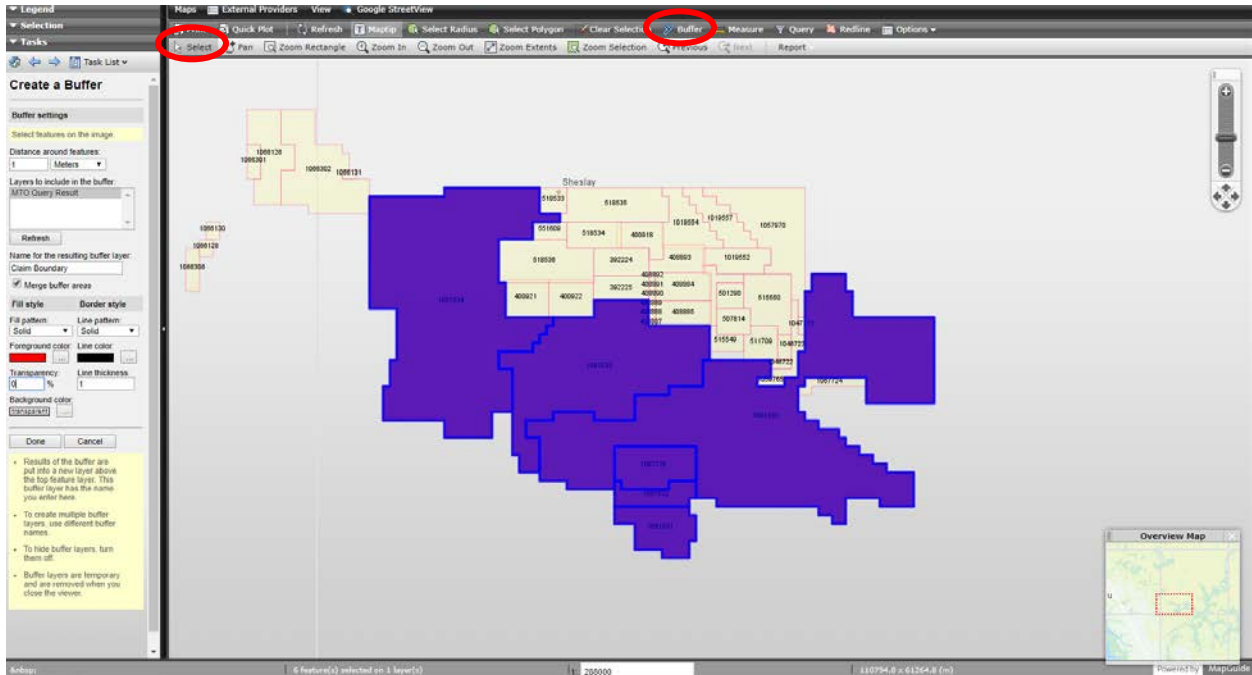
Tenures are shaded in red; generates 'MTO Query Result' layer in the legend



*Jump to **Step 7** to generate the map with red shaded tenures, or continue below to create a solid line around the property tenures

Step 5: Select Tool

Use the Select tool (arrow) and click (and hold down shift) to select all tenures



Step 6: Buffer Tool

Distance around features: 1, change to Metres

Layers to include in the buffer: MTO Query Result

Change Fill Style – Transparency to 0%

Click 'Done'

Click 'OK'

On Map – Clear Selection (black outline of claims remains)

Legend – Turn off 'MTO Query Result' layer to remove red shading

Legend
Selection
Tasks

Task List

Create a Buffer

Buffer settings

Select features on the image.

Distance around features:
1 Meters

Layers to include in the buffer:
MTO Query Result

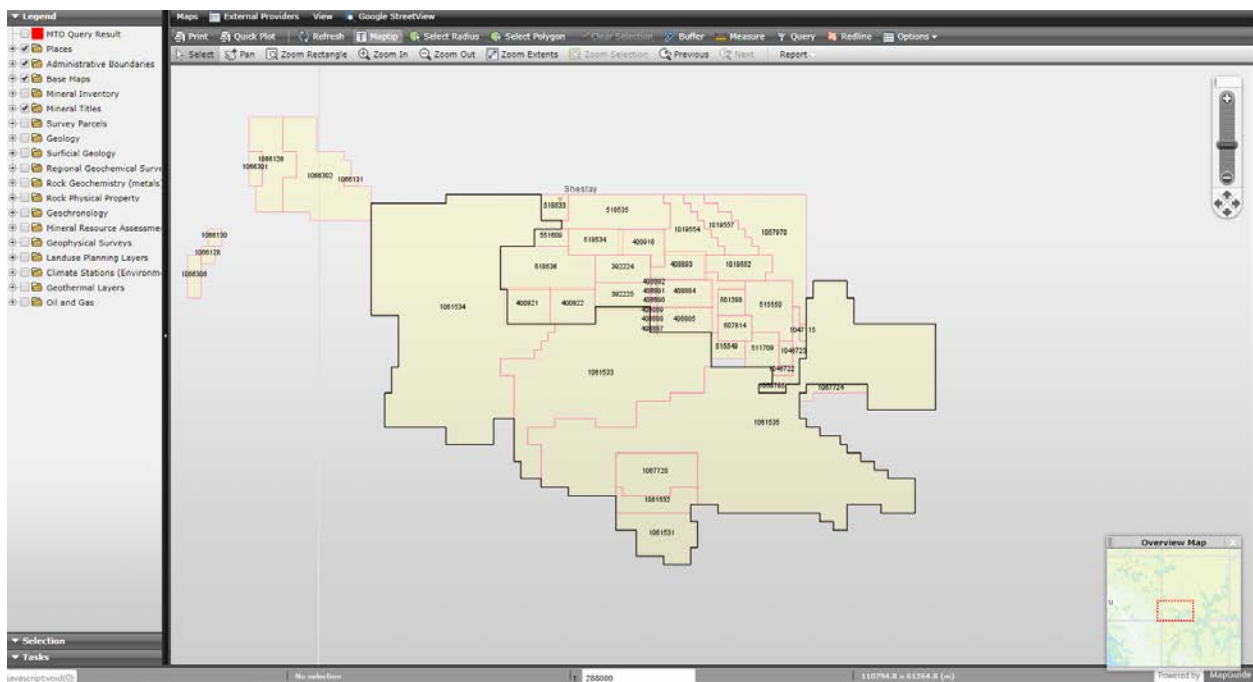
Refresh

Name for the resulting buffer layer:
Claim Boundary

Merge buffer areas

Fill style	Border style
Fill pattern: Solid	Line pattern: Solid
Foreground color: [Red]	Line color: [Black]
Transparency: 0%	Line thickness: 1
Background color: transparent	

Done Cancel



Step 7: Quick Plot

Enter: Title, Subtitle

Select: Paper Size (several options available)

Orientation (portrait or landscape)

Show Elements:

Select on – North Arrow, Coordinates Scale Bar, Legal Disclaimer

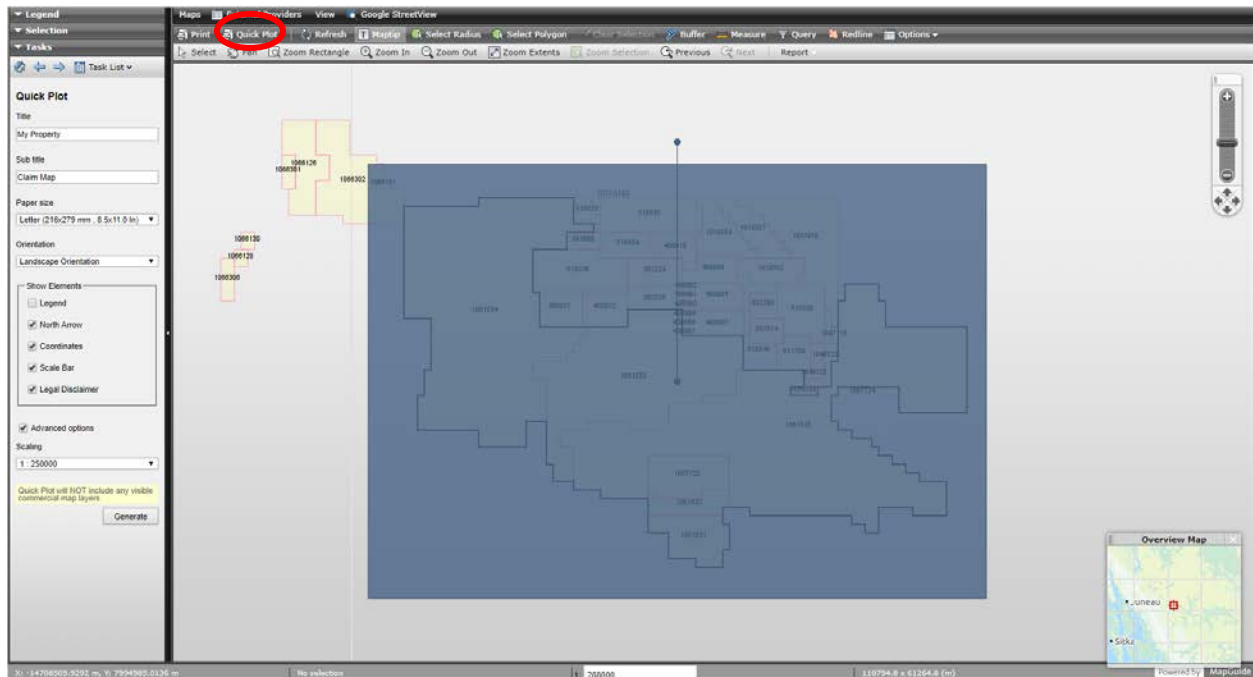
Select off – Legend

Turn on Advanced Options – Select appropriate scaling level to fit property

Blue box appears based on scaling, size, and orientation chosen. Drag within box to adjust placement – centre the property claims in the blue box to ensure all are captured

*Claim numbers must be visible at scale selected in order to appear on the Quick Plot Map

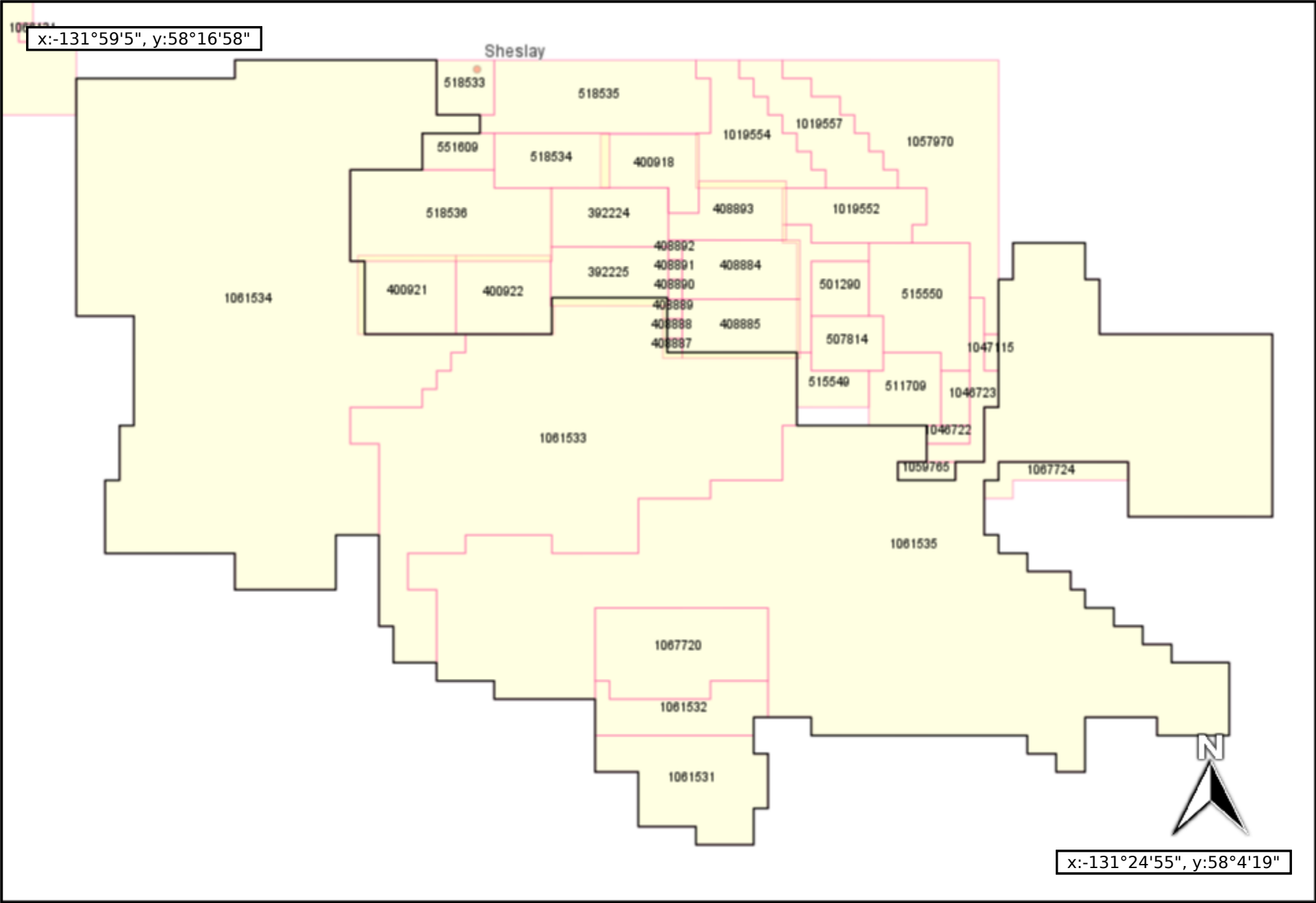
Click 'Generate'



Step 8: Download .pdf and insert into assessment report

*Depending on the size, shape, and scale of map, some claim numbers may not appear. Use the Redline tool to add claim numbers or annotate the .pdf generated.

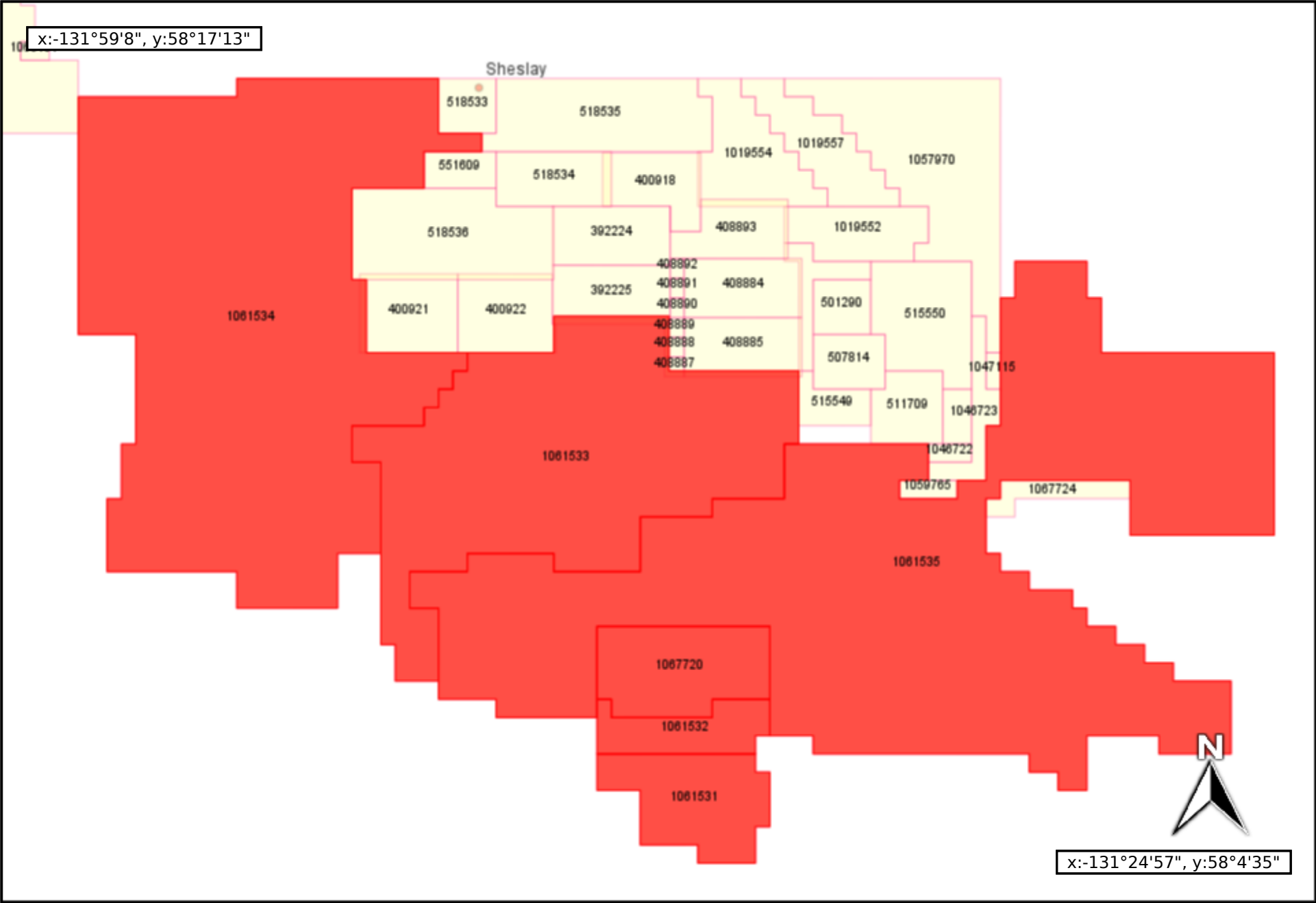
My Property Claim Map



5 km
3 mi

Jul/30/2019
Scale 1:250000 This map is generated from MapPlace.

My Property Claim Map



5 km
3 mi

Jul/30/2019
Scale 1:250000
This map is generated from MapPlace.