

GEOLOGICAL LEGEND

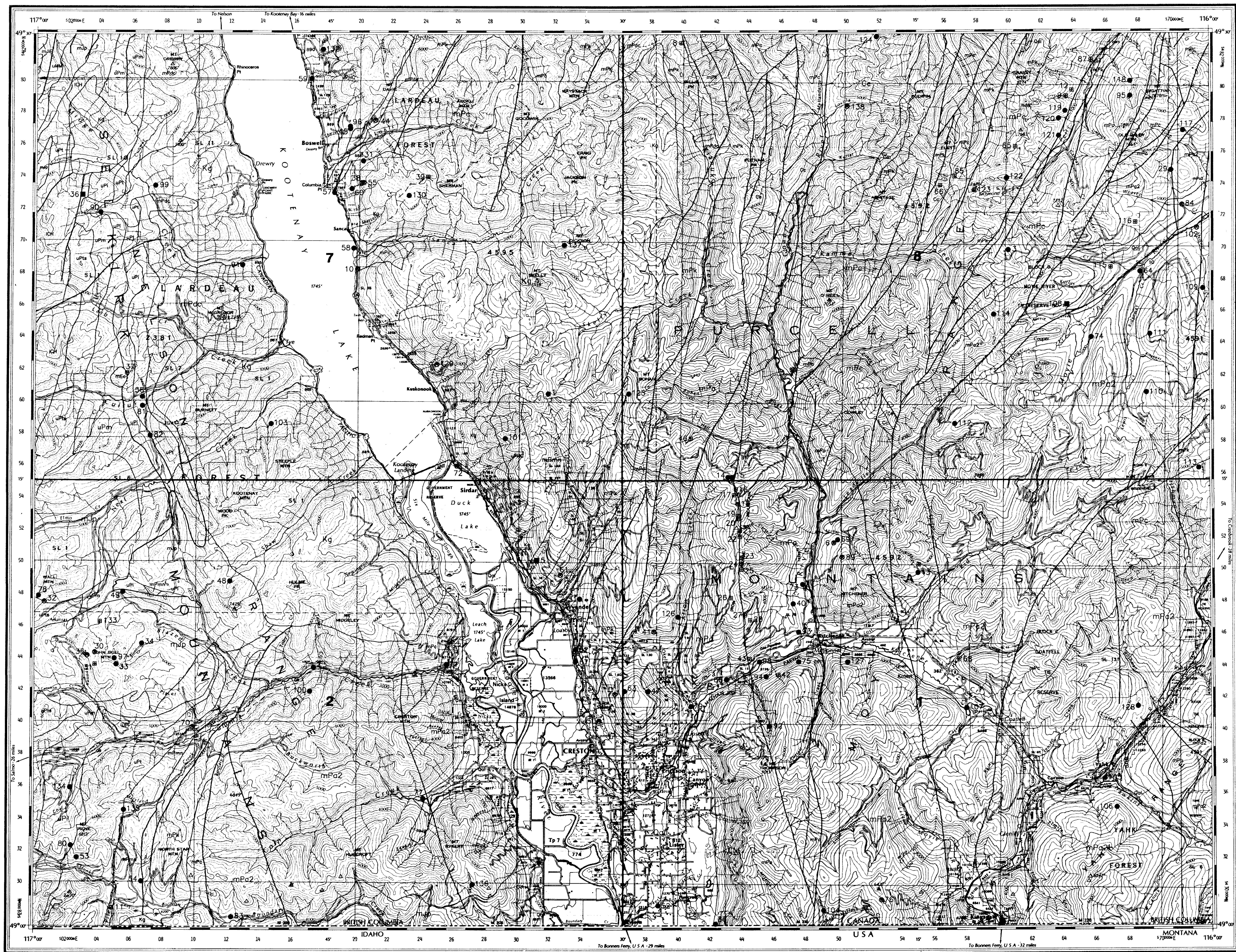
LAYERED ROCKS

- QUATERNARY**
PLEISTOCENE AND RECENT
 Qal Unconsolidated glacial, fluvial and alluvial deposits
- PALEOZOIC**
UPPER MISSISSIPPIAN TO PERMIAN
 UMI MILFORD GROUP: argillite, limestone and quartzite
CAMBRIAN
 Ce EAGER FORMATION: argillite, siltstone
 Cc CRANBROOK FORMATION: quartzite, argillite
- UPPER PROTEROZOIC TO LOWER CAMBRIAN**
 ICH HAMILL GROUP: quartzite
- UPPER PROTEROZOIC (HADRYANIAN)**
WINDERMERE SUPERGROUP
 uPHC HORSETHIEF CREEK GROUP: phyllite, quartzite, grt
 uPta THREE SISTERS FORMATION: grt, quartzite
 uPm MONK FORMATION: phyllite
 uPl IRENE FORMATION: greenstone
 uPr TOBY FORMATION: conglomerate
- MIDDLE PROTEROZOIC (HELIKIAN)**
PURCELL SUPERGROUP
 mPmn MOUNT NELSON FORMATION: quartzite, dolomite and argillite
 mPdc DUTCH CREEK FORMATION (locally includes GATEWAY and VAN CREEK FORMATIONS): siltstone, argillite, quartzite and dolomite
 mPk KITCHENER FORMATION: dolomite, dolomitic siltstone and argillite
 mPc CRESTON FORMATION: siltstone, argillite and quartzite
 mPa ALDRIDGE FORMATION: sedimentary rocks unsubsided
 mPa3 UPPER ALDRIDGE FORMATION: black argillite and siltstone, typically rusty weathering
 mPa2 MIDDLE ALDRIDGE FORMATION: grey quartzite, quartz wacke, argillite and siltstone
 mPa1 LOWER ALDRIDGE FORMATION: siltstone and quartzite

INTRUSIVE ROCKS

- TERTIARY**
Eocene
 mEc CORYELL INTRUSIONS: biotite monzonite, syenite
- CRETACEOUS**
 Kg Granite, granodiorite, monzonite; includes middle Cretaceous Bayoune Batholith
- MIDDLE JURASSIC**
 mJp Porphyritic granite, granodiorite, monzonite
 mJn NELSON BATHOLITH and related stocks: porphyritic granite, granodiorite
- MIDDLE PROTEROZOIC**
 mPml MOYIE INTRUSIONS: quartz diorite and diorite

Geological map and legend compiled from:
 Fyles, J.T. (1964). Geology of the Duncan Lake Area, Lardoux District, British Columbia. B.C. Ministry of Energy, Mines and Petroleum Resources, Bulletin 49, 87 pages.
 Hoy, T., Picha, R.A., Legun, A., Grant, B. and Brown, D.A. (1969). Purcell Supergroup, Southeastern British Columbia Geological Commission Map (NTS, 80C, 82C, 83C, 84C, 85C, 86C, 87C, 88C, 89C, 90C, 91C, 92C, 93C, 94C, 95C, 96C, 97C, 98C, 99C, 100C). B.C. Ministry of Energy, Mines and Petroleum Resources, Geoscience Map 1969-1.
 McLaren, C., Stewart, G. and Lane, R. (1960). Geology and Mineral Occurrences of the Purcell Volcanics, Coxsop, East Hill, B.C. Ministry of Energy, Mines and Petroleum Resources, Open File 1960-20.
 Pope, A. (1961). The Geology and Mineral Deposits of the Toby-Horseshoe Creek Map Area, Northern Purcell Mountains, Southeastern British Columbia (82C). B.C. Ministry of Energy, Mines and Petroleum Resources, Open File 1960-26.
 Renner, J.E. (1973). Geology of the Lardoux Map Area, Geological Survey of Canada, Memoir 369, 129 pages.
 Positions of all geological contacts are approximate. In the case of an apparent disagreement between an occurrence's geological location on the map and its stratigraphic setting given in the MINFILE documentation, the latter should be given priority.



Geological Survey Branch
MINFILE MAP
NTS 082FSE
CRESTON
 This MINFILE release researched and compiled by:
 C.H.B. Leitch
 Date Revised: March 1996
 Scale 1:100 000

Total Number of Mineral Occurrences: 138

Status
 (Symbol) Producer
 (Symbol) Past Producer
 (Symbol) Developed Prospect
 (Symbol) Prospect
 (Symbol) Showing

MAP LEGEND - 082FSE

MINFILE NUMBER	NAME	COMMODITIES	MINFILE NUMBER	NAME	COMMODITIES
001	ALPHA	AG PB CU	077	MCPHAK	CU AG ZN PB
002	FAN	PB ZN CU	078	HARRIS	PB
003	CARIBO	AG PB ZN UR AG AU MO	079	LUCY	TH AG AU PB
004	TOPAZ	CU PB ZN	080	MONTBLODE	CU AG AU
005	WATER CREEK	CU PB ZN UR AG AU	081	FRANCO	CU AG AU
006	LEADVILLE	AG PB ZN UR AG AU	082	WANDERER & HUNKADORA	CU AG AU
007	ALICE LILIAN	AG PB ZN UR AG AU	083	SEVILAK	CU AG AU
008	STORM KING (L.3625)	AG PB ZN UR AG AU	084	WELLS CREEK	CU AG AU
009	COLUMBA	AG PB ZN UR AG AU	085	WILMINGTON	CU AG AU
010	LAKELVIEW (L.14227)	AG PB ZN UR AG AU	086	HAWK	CU AG AU
011	GUAY	AG PB ZN UR AG AU	087	WILSON	CU AG AU
012	HOMESTAKE	AG PB ZN UR AG AU	088	CRESTON CLAY	CU AG AU
013	CHERRY	AG PB ZN UR AG AU	089	STAR CREST	AG PB ZN CU
014	GOLDEN CAP (L.5544)	FE	090	BLACK DOUGLAS	PB ZN AG AU MN
015	UNION JACK (L.3780)	FE	091	MIDGE CREEK	BY
016	AMERICAN FLAG (L.5767)	FE	092	GREAT WAR	FE ZN AG
017	DAVE (L.5772)	FE	093	KITCHENER-SULLIVAN	CU AG AU
018	KEPSAKE (L.5741)	FE	094	RUNNING WOLF	CU AG AU
019	MARIE (L.5772)	FE	095	ROCK	CU AG AU
020	ROSEBUD (L.5775)	FE	096	GOD QUEEN	CU AG AU
021	LA CHANDE (L.5778)	FE	097	CRESTON	CU AG AU
022	CHARON JACK (L.5778)	FE	098	KOSTENAY	CU AG AU
023	DAKOTA (L.5781)	FE	099	SUNBAY	AG KY
024	AGNES (L.5781)	FE	100	DISPER	PB ZN AU
025	PACIFIC (L.5786)	FE	101	SUMMIT	CU AG AU
026	NAAGARA	FE	102	MOVIE RIVER	CU AG AU
027	CONSTELLATION (L.9699)	FE	103	KOOTENAY LAKE	KY ZN AU
028	PROSPECTOR'S DREAM (L.3772A)	AG AU	104	YAH	CU AU
029	BAVONE	AG AU	105	ENG 2	CU AG AU
030	SPRING (L.3014)	AG AU	106	GADTRELL	PB ZN AU
031	POKANE	AG AU	107	MONEL	CU AG AU
032	WYOMING (L.10778)	AG AU	108	LEWIS	CU AG AU
033	SUMMIT BELL (L.10777)	AG AU	109	BEAR	CU AG AU
034	WYOMING (L.10778)	AG AU	110	LAURE	CU AG AU
035	WYOMING (L.10778)	AG AU	111	LAURE	CU AG AU
036	WYOMING (L.10778)	AG AU	112	LAURE	CU AG AU
037	VIA FERRE	AG AU	113	LAURE	CU AG AU
038	VALPARAISO	AG AU	114	COOPER	CU AG AU
039	GOLD BASIN	AG AU	115	WEAVER	CU AG AU
040	EMPIRE STATE	AG AU	116	WEAVER	CU AG AU
041	VIRGINIA (L.7055)	AG AU	117	BUCK	CU AG AU
042	CRESTON HILL	AG AU	118	RACKI	CU AG AU
043	MAY-BEE	AG AU	119	SHAKESPEARE	CU AG AU
044	HOPE	AG AU	120	MONTGOSH (LANNE)	CU AG AU
045	COPPER CANYON	AG AU	121	PRETIA	CU AG AU
046	OTTO SILVER	AG AU	122	GEAD RUN	CU AG AU
047	COPPER RIDGE	AG AU	123	NEAR THERE (SURE THING)	CU AG AU
048	NORTH WIND	AG AU	124	HALL	CU AG AU
049	OTTO SILVER	AG AU	125	ROSE	CU AG AU
050	OTTO SILVER	AG AU	126	SUN	CU AG AU
051	BOB	AG AU	127	SUN	CU AG AU
052	GURIA	AG AU	128	ENG 1	CU AG AU
053	COPPER QUEEN	AG AU	129	JANSEN	PB ZN AG CU CD
054	CALIXTA BELLE	AG AU	130	VANDOVER (NORTHERN)	AG PB ZN AU
055	SARAH 2ND	AG AU	131	LOST MINE	AG PB ZN AU
056	COUNTRY GIRL	AG AU	132	LODGEPOLE	AG PB ZN AU
057	COUNTRY GIRL	AG AU	133	AMC (YUKON)	CU AG AU
058	BLANTIRE	AG AU	134	BEAR	CU AG AU
059	EBUR	AG AU	135	SHANTER	CU AG AU
060	ROYAL	AG AU	136	DOUGIE	CU AG AU
061	ALPINE	AG AU	137	EMO	CU AG AU
062	CALIFORNIA	AG AU	138	LAVOLA CREEK	CU AG AU
063	GOAT MOUNTAIN	AG AU			
064	ROYAL CROWN	AG AU			
065	YELLOW METAL	AG AU			
066	PRINCESS (L.14285)	AG AU			
067	RIGON	AG AU			
068	OPTON	AG AU			
069	BLUE RAIN	AG AU			
070	VIEW	AG AU			
071	MESSE GRANITE (L.14521)	AG AU			
072	TIGAR 1	AG AU			
073	TIGAR 1	AG AU			
074	SENASAE	AG AU			
075	SENASAE	AG AU			
076	BLACKMORE	AG AU			
077	BLACKMORE	AG AU			

COMMODITY LEGEND

CODE INDEX	COMMODITY INDEX	AT
AD	Aggregate	AT
AG	Andalbite	SB
AI	Antimony	SB
AS	Asbestos	SB
BS	Building Stone	SB
BU	Bullseye	SB
CA	Calcium	SB
CD	Clay	SB
CE	Clay	SB
CH	Chert	SB
CL	Clay	SB
CO	Copper	SB
CR	Crystalline Stone	SB
CS	Clay	SB
CU	Copper	SB
DA	Diamond	SB
DE	Diamond	SB
DI	Diamond	SB
DR	Diamond	SB
DU	Diamond	SB
EA	Rare Earths	SB
EB	Rare Earths	SB
EC	Rare Earths	SB
ED	Rare Earths	SB
EE	Rare Earths	SB
EF	Rare Earths	SB
EG	Rare Earths	SB
EH	Rare Earths	SB
EI	Rare Earths	SB
EJ	Rare Earths	SB
EK	Rare Earths	SB
EL	Rare Earths	SB
EM	Rare Earths	SB
EN	Rare Earths	SB
EO	Rare Earths	SB
EP	Rare Earths	SB
EQ	Rare Earths	SB
ER	Rare Earths	SB
ES	Rare Earths	SB
ET	Rare Earths	SB
EU	Rare Earths	SB
EV	Rare Earths	SB
EW	Rare Earths	SB
EX	Rare Earths	SB
EY	Rare Earths	SB
EZ	Rare Earths	SB

OCCURRENCES DELETED FROM PREVIOUS MAP RELEASES

OLD NUMBER	OLD NAME	REASON FOR DELETION
082FSE04	DUD	No mineralization
082FSE09	MIDGE CREEK	Wrong location; actually Black Douglas
082FSE091	KITCHENER IRON	Does not exist; record as Midge Creek