

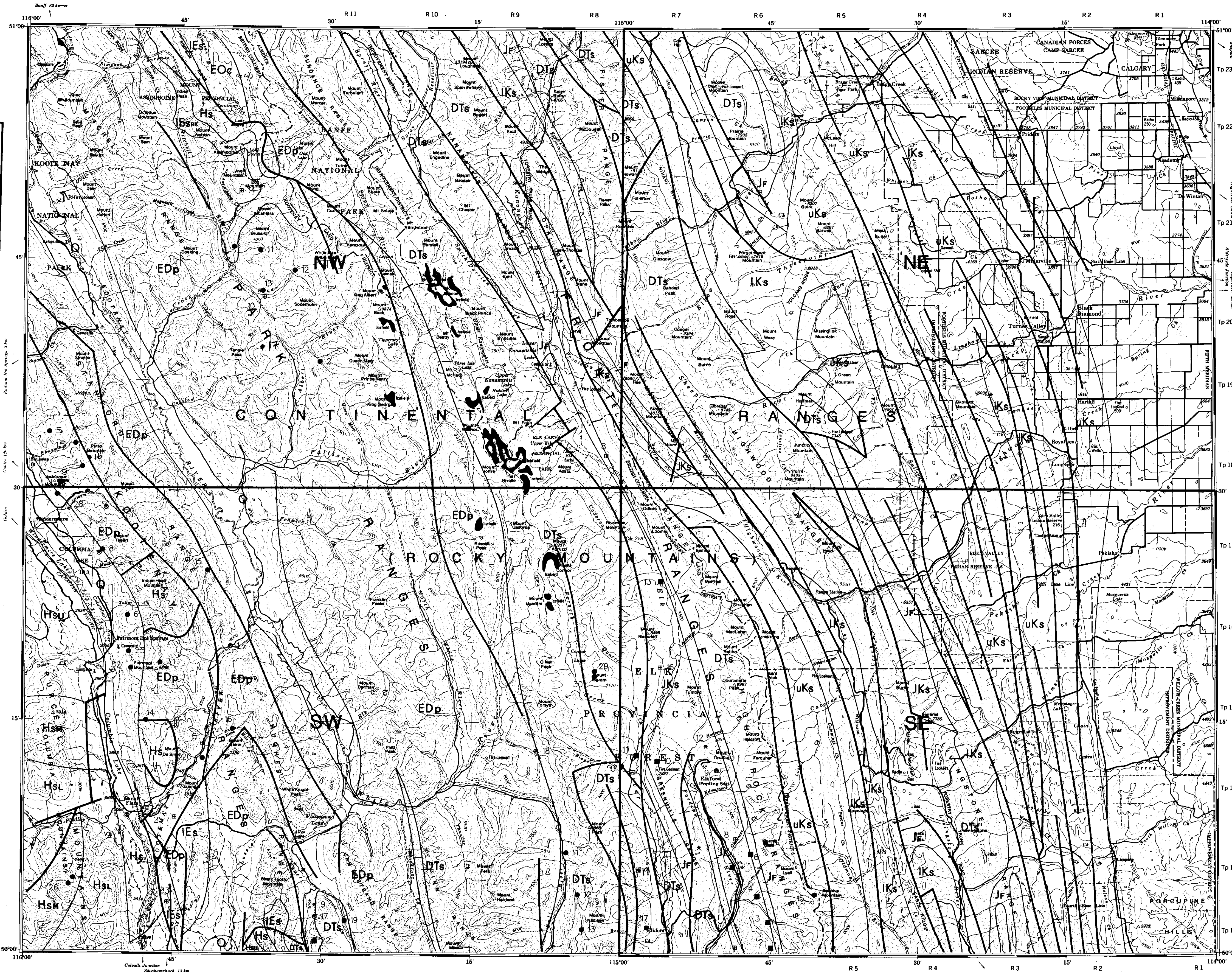
GEOLOGICAL LEGEND

SEDIMENTARY, METAMORPHIC AND VOLCANIC ROCKS

- QUATERNARY AND RECENT**
- Q** Glacial deposits, recent alluvium
- CRETACEOUS**
- UPPER CRETACEOUS**
- uKs** Sandstone, shale. Alberta Group, Edmonton, Brazeau, Belly River, Willow Creek, St. Mary River, Bearpaw, Milk River, Kootena, etc. formations.
- LOWER CRETACEOUS**
- IKs** Sandstone, shale, coal, conglomerate, volcanic breccia. Blairmore Group; Crownsnest Formation.
- JURASSIC-CRETACEOUS**
- JKs** Sandstone, siltstone, mudstone, coal, conglomerate. Kootenay and Nakanassip formations.
- JURASSIC**
- JF** Shale, siltstone, sandstone, limestone. Fernie Group (includes Hall Formation in the Nelson map area).
- DEVONIAN TO TRIASSIC**
- DTs** Triassic shale, sandstone, limestone. Spray River Group. Pennsylvanian-Permian sandstone, shale, chert. Rocky Mountain Group. Mississippian limestone, shale. Rundle Group; Banff, Exshaw, Etherington, Mount Head, Livingston, Hannan, etc. formations. Upper Devonian limestone, sandstone, shale. Fairholme Group; Palliser and Alexo formations.
- CAMBRIAN-DEVONIAN (pelitic facies)**
- EDp** Devonian limestone, shale. Starbird, Mount Forster, Harrogate and Cedared formations. Ordovician-Silurian limestone. Beaverfoot Formation. Ordovician sandstone, shale. Mount Wilson and Glenogle formations. Upper Cambrian-Ordovician limestone, shale. McKay Group. Upper Cambrian shale, limestone. Canyon Creek, Ottertail, Jubilee and Chancellor formations.
- CAMBRIAN-SILURIAN**
- EDc** Ordovician-Silurian limestone. Beaverfoot Formation. Ordovician limestone, shale. Mount Wilson, Owen Creek, Skoki, Outram and Survey Peak formations. Upper Cambrian limestone, shale. Lynx Group. Middle Cambrian limestone, shale. Arctomys, Pika, Eldon, Cathedral, Stephen, Mount Whyte formations.
- LOWER CAMBRIAN**
- IEs** Quartzite, limestone, phyllite, argillite. Hamill and Gog groups; Eager, Badshot, bare karst, Drogan, Reno, Lavo, Quartzite Range formations; Maitert Phyllite, Emerald and Reeves Limestone members.
- PROTEROZOIC**
- HELIKIAN (Belt-Purcell)**
- HSU** Quartzite, argillite, dolomite, limestone, siltstone. Missoula Group, Mount Nelson, Dutch Creek, Gateway, Phillips and Roosville formations.
 - HSM** Limestone, argillite, quartzite, andesite breccia, tuff. Siyeh, Kitchener, Wallace, Helena, Sheppard formations; Purcell Lava.
 - HSL** Quartzite, argillite, siltstone. Ravalli Group; Creston, Aldridge, Fort Steele, Pritchard, Waterton, Appokuy, Alyn, Grinnell and Werner Peak formations.

Geological legend and base derived from:

Okulitch, A.V. and Woodsworth, G.J. (1977): Kootenay River Map Sheet; Geological Survey of Canada Open File 481, 1:1,000,000



Province of British Columbia
Ministry of Energy, Mines and Petroleum Resources

MINFILE MAP 082J KANANASKIS MINERAL OCCURRENCE MAP



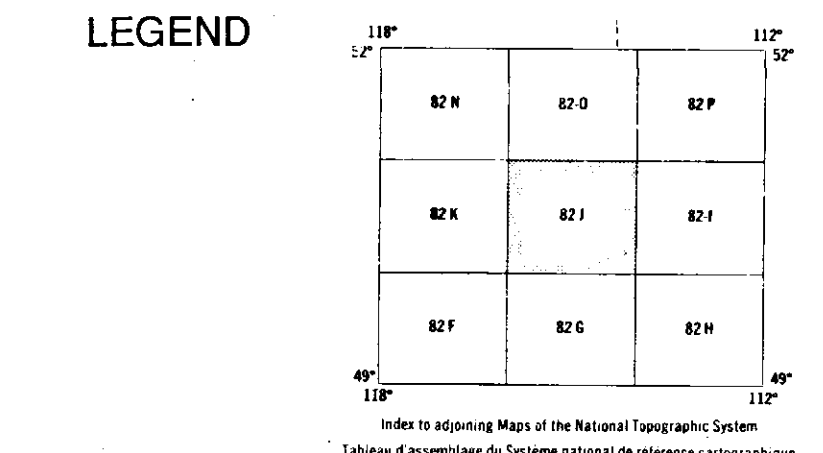
This project is a contribution to the Canada/British Columbia Mineral Development Agreement 1985-1990.

Province of British Columbia Ministry of Energy, Mines and Petroleum Resources
Energy, Mines and Resources Canada Énergie, Mines et Ressources Canada

DATE REVISED: JUNE 1991
DATE UPDATED: MAY 1983

TOTAL NUMBER OF OCCURRENCES: 65
: 66

- STATUS**
- ⊗ Producer
 - ⊙ Past Producer
 - ⊕ Developed Prospect
 - ⊖ Prospect
 - ⊙ Showing



MAP LEGEND

082JNW			082JSW		
MINFILE NUMBER	NAME	COMMODITIES	MINFILE NUMBER	NAME	COMMODITIES
001	BAYMAG	MT	001	RED CLOUD	S1
002	SHAG	ZN PB	002	ELKHORN	BA PB CU
003	JOFERE	GT	003	BINGAY	PP
004	BURNAIS	GT	004	AMOS	GT
005	STODARD CREEK	GT	005	LITTLE JOAN	CU AG
006	LEECH 2	MT	006	URSUS	PB AG ZN
007	TORENTY RIDGE	CL	007	ROSE 1	CU AG
008	UPPER ELK RIVER VALLEY	CL	008	LUCIEN	PB ZN AG
009	SWANSEA	CU AG	009	LUSIER	GT
010	MILLER PASS	MT	010	THUNDER HILL	SH
011	YELO	MT	011	MUNROE	ZN
012	LEECH 3	MT	012	ALPINE	ZN
013	VANO	ZN	013	BOIVIN	ZN PB
014	MOUNT ASSIMBOINE	ZN PB	014	COL	ZN PB
015	HIGHMONT	ZN PB	015	STAN	ZN PB
016	FINTO	BA FL	016	MARTIN	GT
017	BEAVER CREEK	CU PB ZN WO AU	017	BEAVER (CLUSSIER SOUTH)	GT
018	ROCK CANYON CREEK	GT	018	ROCK CANYON CREEK	FL RS TH AG AU
019	CYPIT	GT	019	NINE MILE	GT
020	WINDERMERE	GT	020	WINDERMERE	GT
021	TRUCIC	GT	021	TRUCIC	GT
022	FAIRMONT MOUNTAIN	DO	022	FAIRMONT MOUNTAIN	DO
023	KOOT	DO	023	KOOT	DO
024	LEAD	PB	024	LEAD	PB
025	SILVER	AG PB ZN AU	025	SILVER	AG PB ZN AU
026	COLUMBIA GYPSUM	GT	026	COLUMBIA GYPSUM	GT
027	FORSYTH CREEK NORTH	PP	027	FORSYTH CREEK NORTH	PP
028	FORSYTH CREEK SOUTH	PP	028	FORSYTH CREEK SOUTH	PP
029	FAIRMONT CREEK	DO	029	FAIRMONT CREEK	DO
030	GEARY CREEK	DO	030	GEARY CREEK	DO
031	POND	DO	031	POND	DO
032			032		
033			033		

COMMODITY LEGEND

CODE	COMMODITY	COMMODITY	CODE
AG	Silver	Barite	BA
AU	Gold	Coal	CL
BA	Barite	Copper	CU
CL	Coal	Dolomite	DO
CU	Copper	Fluorite	FL
DO	Dolomite	Gold	AU
FL	Fluorite	Gypsum	GT
AU	Gold	Kyanite	KT
GT	Gypsum	Lead	PB
KT	Kyanite	Lead	PB
PB	Lead	Magnesite	MT
MT	Magnesite	Phosphate	PP
PP	Phosphate	Rare Earths	RS
RS	Rare Earths	Shale	SH
SH	Shale	Silica	S1
S1	Silica	Silver	AG
AG	Silver	Thorium	TH
TH	Thorium	Zinc	ZN
ZN	Zinc		