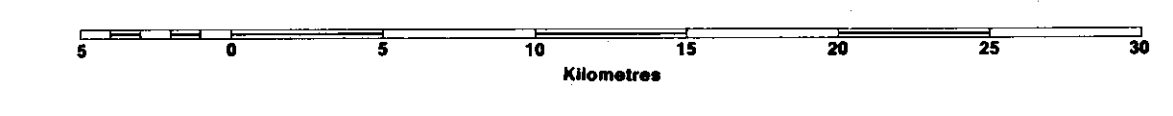
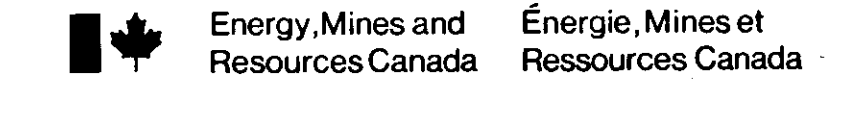


# MINFILE MAP 82M SEYMOUR ARM MINERAL OCCURRENCE MAP

Scale 1:250 000



This project is a contribution to the Canada/British Columbia Mineral Development Agreement 1985-1990.



DATE REVISED: NOVEMBER 1987  
DATE UPDATED: MAY 1976

TOTAL NUMBER OCCURRENCES: 244  
: 243

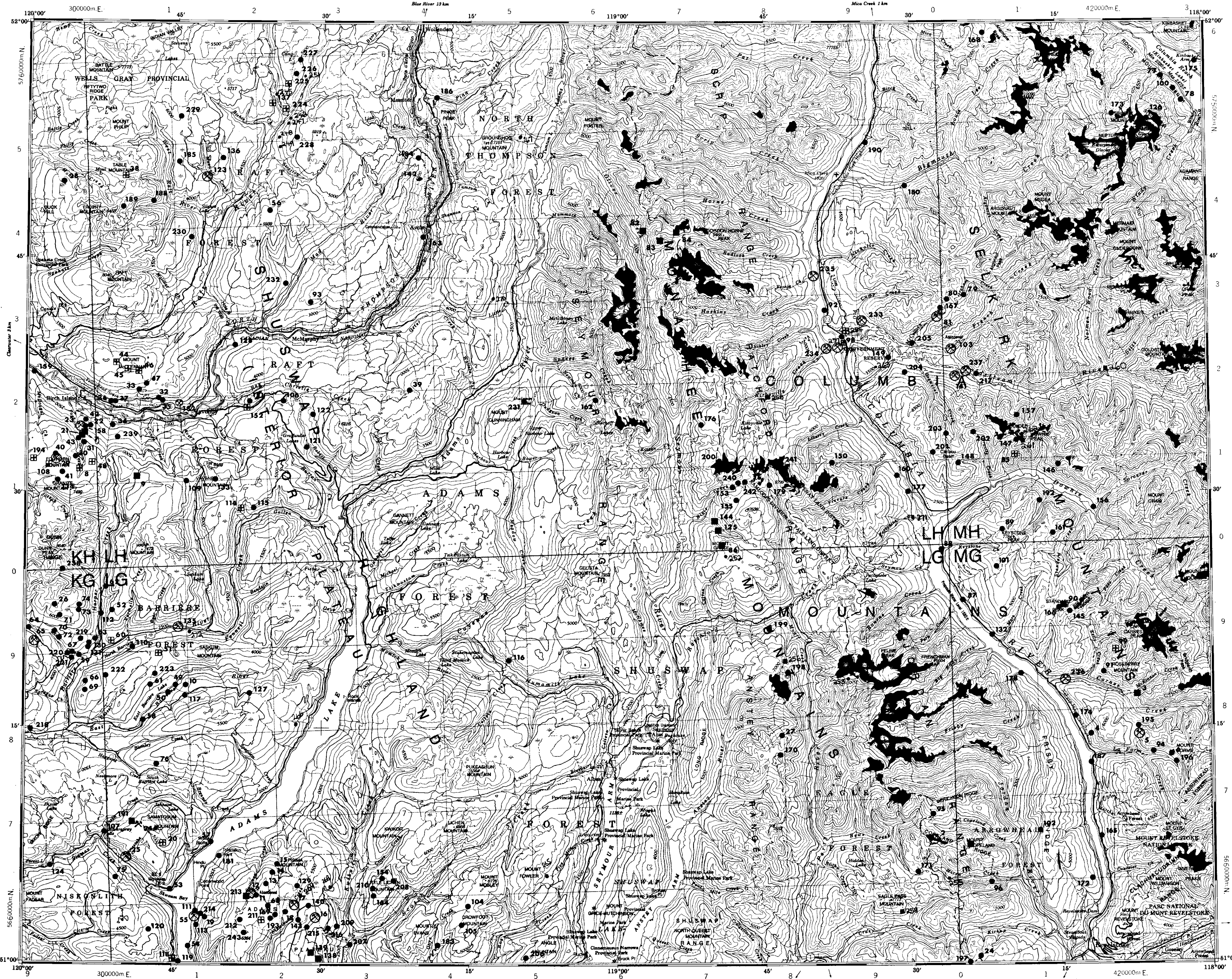
### LEGEND

- STATUS**
- ⊗ Producer
  - ⊙ Past Producer
  - ⊕ Developed Prospect
  - ⊖ Prospect
  - Showing

**INDEX**

82 A	82 D	82 C
82 P		82 N
82 I	82 L	82 K

MINFILE NUMBER	NAME	COMMODITY(S)	MINFILE NUMBER	NAME	COMMODITY(S)	MINFILE NUMBER	NAME	COMMODITY(S)
001	RIVER JORDAN	Zn, Pb, Ag, Ba, F	091	ROSEBERRY	Au, Cu, Zn, Pb	181	ADAMS LAKE	La
002	MOUNT COPELAND	Au, Zn, Pb, Cu, Fe, Ni, S, F	092	HILL COLUMBIA	Au	182	CAVERNE	La
003	J & L	Au, Ag, Pb, Zn, Au	093	ROGEE	Pb, Ag, Au, Zn, Cu	183	ONYX (MANSON) CREEK	La
004	COPPER QUEEN	Cu, Zn, Ag	094	LEAD KING	Pb, Zn, Cu, Ag	184	HYDRO	Cu, Mo, Ag, W
005	MUSTOON	Zn, Pb, Cd, Ag, Au, Cu	095	COPELAND CREEK	Pb, Zn, Au	185	ELM	Mo
006	LITTLE SLIDE	Pb, Zn, Ag, Cu	096	HURK CREEK	Pb, Zn, F	186	PINN	Zn, Pb
007	SPAR	F, Sr, Mo, Ag, Cu, Pb, Zn, Au	097	WEST COLUMBIA	Pb, Zn, Au	187	THANKSGIVING	W
008	FR	Cu, Ag	098	MONARCH	Au, Pb, Ag, Au	188	TH 1	W
009	HARPER CREEK	Cu, Mo, Ti, Pb, Zn	099	A & E	Zn, Pb, Ag, Au	189	TH 8	W
010	BEX ZONE	Cu	100	KINASKET	Pb, Zn	190	KIFT	Zn, Pb, Cu, Ag, Au
011	BIG BEN 2	Pb, Zn, Cu	101	CARBONATE CHIEF	Au, Ag	191	NEA GOLD	Ag, Zn, Pb, Au, Cu, Ba
012	LUCKY COON (L-5233)	Pb, Zn, Ag, Au, As, Cd	102	FRISBY RIDGE	Zn, Pb, Ag	192	BEATREE	W, Mo, Cu, Pb, Zn
013	KING TUT	Au	103	FRENCH CR	Au	193	MAD	Cu, Pb, Zn, Ag, Au
014	SPEEDWELL	Pb, Zn, Ag	104	BEF	Ag, Pb, Zn, Cu, Au, Sn	194	JOSEPH	Ag, Pb, Zn, Cu, Se
015	DONNAMORE	Pb, Zn, Ag	105	SAIL	Pb, Ag, Zn, Cu, Sn, Au	195	MADSTOWN NORTH	Zn, Pb, Ag
016	MOSQUITO KING	Ag, Zn, Pb, Cu, Au, Cd	106	REG	Cu	196	LITTLE SLIDE NO. 3	Zn, Pb, Ag
017	EX 1	Pb, Zn, Ag, Cu, Mo, Au	107	STAKE	Pb, Zn	197	KIRKUP	Talc
018	SHAMROCK	Zn, Pb, Ag	108	FOGGY 3	Ag, Pb, Zn, Cu	198	CRILLY LAKE	KY
019	EMMORE	Pb, Zn, Ag, Cu	109	VM	Cu	199	REN	Ce, La, Nb, Mo, Cu, Zn, Nd
020	TWIN MOUNTAIN	Pb, Zn, Ag, Cu, Au, Ba	110	B & B	Cu	200	D & R	Mo
021	REXPAR	U, Th, F, Ce, La, Nb, Yr, Nd, Li	111	VIC 1	Pb, Cu, Zn, Ag	201	MEL 1200	Cu, Zn
022	G ZONE	Mo, U, Th, F	112	VIC 2	Mo	202	MEL 600	Cu
023	SMUGGLER	Pb, Ag, Zn	113	VIC 21	Ag, Pb, Zn, Cu	203	MEL 200	Cu
024	GC	Li	114	HILLTOP	Cu	204	NEKT 1	Cu
025	HOMESTEAK (L-827)	Ag, Pb, Zn, Au, Cu, Ba, Sb, Te	115	HILLTOP 9	Cu	205	STAN	Pb
026	BIRMOLY	Mo	116	RIO	W, Cu	206	MB	Ag, Pb
027	RIP	Mo	117	FENNEL ZONE	Cu, Au, Ag, Ni	207	SPARKLE 4	Pb, Ag, Cu, Zn
028	TIM	Mo	118	PAT 2	Cu	208	TIM	Pb, Zn, Mo, Ag
029	FOGHORN	Ag, Pb, Zn, Cu	119	PAT	Au	209	GOLDEN EAGLE	Cu, Pb, Zn
030	SHAMROCK	Pb, Ag, Au	120	PIMS	Cu, Pb, Zn	210	FIR	Pb, Ag
031	MINNESOTA GIRL	Pb, Zn, Ag, Au	121	REE 7	Cu	211	MAD-SECOND	Pb, Zn, Ag, Cu
032	TINKER	Ag, Au, Pb	122	ROB	Cu	212	AXL 3	Pb, Zn, Ag, Cu
033	BEARSDEN	Ag, Pb, Cu, Au	123	BIPLAC	Mo, W	213	ELBIE (L-5227)	Pb, Zn, Ag
034	BULLDOG	U, Th	124	GET	Pb, Cu, Ag, Zn	214	VIC 5	Cu
035	BIG CHIEF	Pb, Ag, Cu, Au	125	COMPLEX	Zn, Pb, Ag, Fe, Au, Cu	215	AD 1	Ag, Au, Zn, Pb, Cu
036	LEONIE	Pb, Zn, Ag, Cu	126	TAMMANT MOUNTAIN KVANITE	KY	216	AD 18	Ag, Au, Zn, Pb, Cu
037	ELVA	Pb, Zn, Ag, Cu	127	NEP	Cu	217	PAK 700	Pb, Cu, Ag
038	SUMMIT	Zn, Ag, Pb, Cu, Au	128	GABRO	Cu, Co, Ag, Au, W	218	CHICKLIXIE	Cu, Zn, Au
039	CARIBOO	Cu, Mo, Au, Ag, Mn	129	A	Ag, Pb, Zn	219	PERCY	Cu, Ag, Au, Pb, Zn
040	CHERIDON	Ag, Pb, Zn, Cu	130	BROKEN RIDGE	Cu, Pb, Zn, Ag	220	COPPER CLIFF	Cu, Pb, Zn, Ag
041	KELLY'S	Pb, Zn	131	NOY	Cu, Pb, Zn, Ag	221	BAIRDROW	Cu, Pb, Zn, Ag
042	MILLAR'S	Pb, Zn, Mo	132	MARS CR	Zn, Pb, Cd	222	CAD	Zn, Pb, Cu
043	FOGHORN CR MOLY	Mo, Pb, F	133	SIN	Cu	223	ADON V	Pb, Zn, Ag, Cu
044	RED TOP	Ag, Pb, Zn, Cu	134	KEYSTONE	Cu	224	CK (NEW)	Zn, Pb, Cu
045	SNOW	Ag, Pb, Zn, Cu	135	SAN	Ag, Pb, Au, Zn, Cu	225	CK (MIST)	Zn, Pb, Cu, Ag, Au
046	SUNRISE	Ag, Pb, Zn, Cu, Au	136	MOSQUITO	Cu, Mo, Au, Ag	226	CK (NORTH)	Zn, Pb, Cu
047	MORRISON	Zn, Pb, Cu, Pb	137	CK (MAIN BOULDER)	Zn, Pb, Cu	227	CK (RAFT SYNFORM)	Zn, Pb
048	FOGGY 11	Cu, Pb, Zn, Ag	138	CU 1	W, Ag, Zn, Pb, Cu, Fe, Mo, Au, Cd	228	CK (NORTH STRAT)	Zn, Pb
049	GRIZZLY	Cu, Ag, Zn, Mo, Au	139	CU 5	Zn, Ag, Pb, Cu, Fe	229	MAM	Cu, Pb, Zn, Ag
050	RENNING	Ag, Zn, Cu, Pb	140	ORO	Cu	230	SI	Pb, Zn
051	EBL	Cu, Pb, Zn, Ag, Au, Mo	141	GOLDSTREAM	Cu, Zn, Ag	231	HARBOR	W, Mo, Cu
052	H	Mo	142	TRIO	Cu, Mo, Pb, Zn, Ag	232	MAR	Au
053	AGATE	Pb, Zn, Ag, Cu	143	PEP	Pb, Zn, Ag, Au	233	CAMP CR	Au
054	JOE	Ag, Pb, Cu, Zn, Au	144	COPPER KING	Cu, Zn, Ag, Au	234	SMITH CR	Au
055	BECA	Cu, Zn, Ag, Au	145	STANDARD 4	W	235	FERNIE CR	Au
056	TU	W	146	FIM	W	236	CARNES CR	Au
057	ROSE	Zn	147	ROSE	Pb, Zn, Ag, Au	237	GOLDSTREAM CR	Au
058	KAJUN	Ag, Pb, Zn, Cu, Au	148	O'REILLY	Cu	238	KITTY	Ag, Mo, Pb, W
059	CC	Zn, Pb, Ag, Cu	149	BEND	Cu, Zn, Talc	239	TIA	Pb, Zn, Cu, Ag
060	HARBER	Cu, Zn, Pb, Ag, Au	150	CARBIDE	Cu, Pb, Ag	240	OCCURRENCE CB 14-9	Cu, Fe
061	RUTH	Ag, Pb, Zn, Cu, Au	151	VAV (NORTH)	Cu, Mo	241	OCCURRENCE CB 16-2	Cu
062	BAR, BARRIERE	Mo	152	VAV (SOUTH)	Cu, Mo	242	OCCURRENCE CB 14-12	Cu, Fe
063	SITTING BULL	Cu, Ag, Au	153	ELAIS	Pb	243	AXL	Pb, Zn, Ag, Cu
064	NORTH STAR (NORTH SHOWING)	Pb, Zn, Ag, Cu	154	SEYMOUR	Pb, Zn, Ag, Mn, Au	244	SANATOUSIN MOUNTAIN	Ag, Au, Pb, Zn, Cu, Ba
065	EMERGITE	Pb, Ag, Zn, Cu, Au	155	SEYMOUR	Cu, Pb, Zn	245	CK-EAST	Pb, Zn
066	WHITE ROCK (L-4023)	Pb, Ag, Zn, Cu, Au	156	ROGER	W, Cu, Cr, Ag, Mo	246	CK-SPRING	Pb, Zn
067	ARCONDA	Cu, Pb, Zn, Au	157	STAY 1300	Mo	247	CK-NO NAME BOULDER	Pb, Zn
068	AXL 1	Cu, Zn, Pb, Ag	158	SMUGGLER MANGANESE	Mn, Cu	248	CK-ANTHONY	Pb, Zn
069	SILVER MINERAL	Ag, Pb, Au	159	CR	Cu, Au, Ag	249	CK-COYNE	Pb, Zn
070	FORTUNA 2	Pb, Zn, Ag	160	SLIDE	Pb, Zn, Ag	250	MT GRACE CARBONATITE	Nb, Co, Ni, Na
071	KUNO	Pb, Ag, Au	161	SILVER SHIELD	Pb, Ag, Au	251	FRANK CREEK KVANITE	W, Cu, Cr, Nd
072	FORTUNA 1	Pb, Ag	162	BISCHOFF LAKES	Be	252	ORO VIEJO	Mo
073	KURIBONG	Pb, Ag	163	AVOLA	W	253	FRANK CREEK KVANITE	Mo
074	MAFALDA	Pb, Ag	164	NIKE	Ag, Pb, Zn, Mn, Fe	254	FRANK CREEK	Mo, Si
075	ACACIA	Pb, Zn	165	COLUMBIA RIVER	Cr	255	ORO VIEJO TALS	Te
076	STANDARD	Pb, Cu	166	STANDARD	Ag, Ti, Cu	256	HURBYVILLE CREEK	Ag, K, Y
077	TRIDENT CR	Mo, U, Zn	167	PREMAN BAY	Au, W	257	ERQUE PASS MOUNTAIN	Ad
078	MOSUL	Pb, Zn, Ag	168	YELLOW CREEK	Mica, Be, Ky	258	STITT CREEK	Sn
079	GRANAN CREEK	Zn, Cu	169	ADAM 10	Zn, Cu	259	UPPER MONTGOMERY	Ag
080	FRANCK	Au, Ag, W, Mica	170	FRANCK	Alkaline rock	260	ICE	Au
081	MCCULLOCK CR	Ag	171	BEMS CREEK	Gs	261	ICE	Au
082	RUDDOCK CR (G.R.D.V ZONES)	Zn, Pb, Ag, F, Ba	172	SILVER CITY	Ag, Cu	262	LADYBUDS	Zn, Pb, Hg
083	RUDDOCK CR (F ZONE)	Zn, Pb, Ag, F, Ba	173	TRIDENT Mtn	Ag	263	CHM 200/1A	Au, Fe, Pb, Cu
084	RUDDOCK CR (E.F.G.M ZONES)	Zn, Pb, Ag, F, Ba, Gs	174	COLUMBIA RIVER	Ad	264	BIZAR	Co, Bi, Cu, Ag
085	MONTGOMERY	Cu, Zn, Ag, Au	175	KINASKET LAKE	Ag, W, K	265	APR 40B	Cu, Pb, Zn, Ag
086	COTTON BELT (L-2105)	Pb, Zn, Ag, Cu, Mo, Fe, Au	176	SEYMOUR	KY	266	APR 46	Cu
087	STERLING	Mo, Pb, Zn, Ag, Au	177	DEATH RAPIDS	KY	267	ICE	Cu
088	KEYSTONE 1	Zn, Cu	178	FRISBY	KY	268	OTTER CREEK	W, U
089	KEYSTONE	Pb, Zn, Cu, Au, Ag	179	ELAIS CREEK	Sillimanite	269	FOOTY-HIC CREEK	Sn, KY
090	STANDARD	Cu, Zn, Ag, Ti, Au, Ba, Te	180	BIG BEND	Mica	270	LUCKY-J	Sn



Topographic base map produced by SURVEYS AND MAPPING BRANCH, ENERGY, MINES AND RESOURCES CANADA.