

GEOLOGICAL LEGEND

STRATIFIED ROCKS

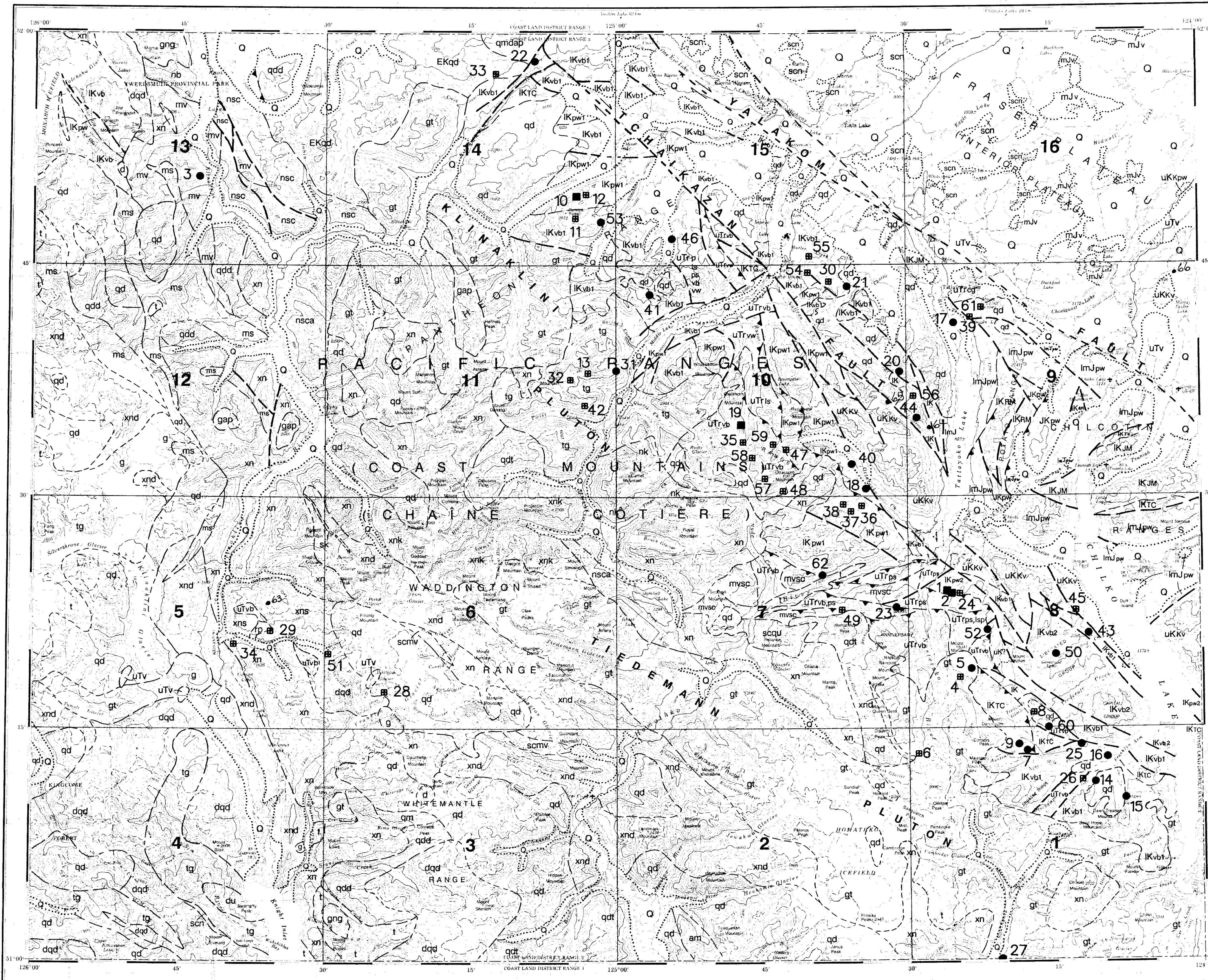
- CENOZOIC**
- QUATERNARY**
- PLEISTOCENE AND RECENT**
- Q Till, gravel, sand, and alluvium
- TERTIARY**
- UPPER MIOCENE, PIOCENE, AND (?) YOUNGER**
- uTv Vesicular basalt and andesite flows, related breccia and tuff; gravel and sand;
uTv: volcanic breccia
- MESOZOIC**
- CRETACEOUS**
- UPPER CRETACEOUS**
- CENOMANIAN AND (?) YOUNGER**
- KINGSVALE GROUP**
- uKv Division B: Andesitic and basaltic breccia and tuff
- uKpw Division A: Siltstone, greywacke, and conglomerate
- LOWER CRETACEOUS**
- ALBIAN**
- IKM JACKASS MOUNTAIN GROUP: Greywacke, siltstone, and conglomerate
- IKTC TAYLOR CREEK GROUP: Shale, siltstone, greywacke, and pebble conglomerate
- HAUTERIVIAN AND (?) YOUNGER**
- IKb2 Reddish to purplish andesitic breccia and tuff
- IKpw2 Siltstone, greywacke, conglomerate, breccia, quartz sandstone, and limestone
- IKv1 Andesitic and basaltic breccia and tuff; minor shale, greywacke, and conglomerate
- IKpw1 Siltstone, greywacke, and conglomerate
- BERRIASIAN TO BARREMIAN**
- IKM RELAY MOUNTAIN GROUP: Arkose, conglomerate, greywacke, siltstone, and limestone
- JURASSIC AND CRETACEOUS**
- OXFORDIAN TO BERRIASIAN**
- JKpw Siltstone, greywacke, conglomerate, and arkose
- JURASSIC**
- HETTANGIAN (?), SINEMURIAN, BAJOCCIAN, AND CALLOVIAN**
- ImJpw Siltstone, shale, greywacke, grit, and conglomerate
- mJv Tuff and volcanic breccia; minor conglomerate and shale
- TRIASSIC**
- UPPER TRIASSIC**
- UPPER NORIAN**
- uTrp Shale, siltstone, greywacke, conglomerate, volcanic breccia, and tuff;
uTrp: conglomerate, limestone, and greywacke
- uTrs Limestone, shale, and greywacke
- NORIAN**
- uTrw Basalt, andesite, greywacke, siltstone, and conglomerate
- CARNIAN (?) AND LOWER NORIAN**
- uTrps Shale, sandstone, pebble conglomerate; minor shaly limestone
- CARNIAN**
- uTrp Limestone, shale, greywacke, tuff and volcanic breccia
- uTrv Dark green andesitic breccia, tuff and flows; minor shale and limestone

PLUTONIC AND METAMORPHIC ROCKS

COAST PLUTONIC COMPLEX

- MESOZOIC AND CENOZOIC**
- gng Granite and granodiorite
- g Granodiorite
- gt granodiorite and tonalite
- gap: aplitic granodiorite
- t Tonalite
- tg: Tonalite and granodiorite
- qd Quartz diorite
- qdd: quartz diorite and diorite
- qdt: quartz diorite and tonalite
- qmt: quartz monzoniorite
- qmdap: aplitic quartz monzoniorite
- EKq: Early Cretaceous quartz diorite, dated by K-Ar
- d Diorite
- dqd: diorite and quartz diorite
- du: diorite and gabbro
- xn Granitoid gneiss
- xna: siliceous granitoid gneiss
- xnd: dioritic granitoid gneiss and/or dioritic complex
- xnk: granitoid gneiss stockwork
- nsc Gneiss and schist
- nscA: gneiss, schist and amphibolite
- nb: banded gneiss
- nk: stockwork gneiss
- scn Schist and gneiss
- scqu: schist and quartzite
- scmv: schist and metavolcanic rock
- sk Skarn
- rp Rhyolite porphyry
- ms Pelitic metasediments
- mv Metavolcanic rock
- mvs: metavolcanic and schist
- am: amphibolite

Geological map and legend summarized mainly from:
Roddick, J.A. and Tipper, H.W. (1988). Geology, Mount Waddington (82N) map area; Geological Survey of Canada, Open File 1183.
With modifications in the Chilkó Lake area from:
McLaren, G.P. (1990). A Mineral Resource Assessment of the Chilkó Lake Planning Area, B.C. Ministry of Energy, Mines and Petroleum Resources, Bulletin 81.



BC Ministry of Energy, Mines and Petroleum Resources

Geological Survey Branch

MINFILE MAP NTS 092N MOUNT WADDINGTON

This MINFILE release researched and compiled by: C. J. Rees

Date Revised: May 1992
Scale 1:250 000

Total Number of Mineral Occurrences: 62

| Status | 093D | 093C | 093B |
|--------------------|------|------|------|
| Producer | 1 | 1 | 1 |
| Past Producer | 1 | 1 | 1 |
| Developed Prospect | 1 | 1 | 1 |
| Prospect | 1 | 1 | 1 |
| Showing | 1 | 1 | 1 |

MAP LEGEND - 092N

| MINFILE NUMBER | NAME | COMMODITIES |
|----------------|-----------------------|----------------------|
| 001 | SPokane (L702) | CU AG AU |
| 002 | MORRIS | CU AG SB CU ZN AS |
| 003 | JAY 1-9 | CU |
| 004 | BEN 28 | CU MO |
| 005 | BLUE 33-38 | CU MO AG |
| 006 | RUM 56 | CU MO AG |
| 007 | AUSTEN | CU MO AG |
| 008 | MOUNTAIN BOSS | AU AG CU |
| 009 | BRITON (L1092) | FE |
| 010 | BLUBELL | AU GT |
| 011 | NOREA 18, 20 | CU MO WO |
| 012 | GLASSGOW | CU AG |
| 013 | CINDY 16-41 | CU AG |
| 014 | FAB 1-29 | CU |
| 015 | LST FIDDLE 1-4 | AU AG CU ZN PB |
| 016 | BLACKHORN MOUNTAIN | AU AG CU |
| 017 | NUT MOUNTAIN | CU |
| 018 | MATH | CU AG |
| 019 | KIM | AU AG CU |
| 020 | ICT | AU AG SB |
| 021 | FAIM | CU MO AG WO ZN AU PB |
| 022 | DAISIE | CU MO AG WO ZN AU PB |
| 023 | HANNAH 8, 10, 11 | CU MO AG ZN PB WO |
| 024 | HODDOD NORTH | AU AG CU MO ZN PB |
| 025 | MO 1-83 | CU MO PB ZN |
| 026 | A & E | AU AG CU ZN PB SB BI |
| 027 | ORWILL | AU AG CU ZN PB SB BI |
| 028 | HODDOD SOUTH | AU AG CU ZN PB |
| 029 | HOMESTAKE | AU AG CU ZN PB |
| 030 | LANGARA NO. 1 (L1189) | AU AG CU ZN PB |
| 031 | STANDARD (L1176) | AU AG CU ZN PB |
| 032 | ARGO (L1177) | AU AG CU ZN PB |
| 033 | SKINNER | AU AG CU |
| 034 | RASC | AU AG CU |
| 035 | K | CU WO AU AG |
| 036 | STOVE | CU HG AU AG |
| 037 | RUSTY | CU HG AU SB ZN AU |
| 038 | ALEXIS | CU HG AU SB ZN AU |
| 039 | GOLDEN ROSE | CU HG AU SB ZN AU |
| 040 | LOR | CU HG AU SB ZN AU |
| 041 | AT 2 | CU HG AU SB ZN AU |
| 042 | KOR 1, 3, 4, 7 | CU HG AU SB ZN AU |
| 043 | SIRD | CU HG AU SB ZN AU |
| 044 | LANCERS MOUNTAIN | CU HG AU SB ZN AU |
| 045 | TIB | CU HG AU SB ZN AU |
| 046 | PIN | CU HG AU SB ZN AU |
| 047 | MAC | CU HG AU SB ZN AU |
| 048 | NEWMAC 1 | CU HG AU SB ZN AU |
| 049 | FLY | CU HG AU SB ZN AU |
| 050 | AT 3-4 | CU HG AU SB ZN AU |
| 051 | HW | CU HG AU SB ZN AU |
| 052 | CHAMPAGNE | CU HG AU SB ZN AU |
| 053 | TRED | CU HG AU SB ZN AU |
| 054 | BIG SLIDE | CU HG AU SB ZN AU |
| 055 | LOTUS | CU HG AU SB ZN AU |
| 056 | ORALENE | CU HG AU SB ZN AU |
| 057 | ANTWAF | CU HG AU SB ZN AU |
| 058 | CLYBOURNE | CU HG AU SB ZN AU |
| 059 | KRY | CU HG AU SB ZN AU |

COMMODITY LEGEND

| CODE INDEX | COMMODITY INDEX |
|------------|-----------------|
| AG | Silver |
| AS | Arsenic |
| AU | Gold |
| BI | Bismuth |
| CU | Copper |
| CO | Cobalt |
| CA | Calcium |
| FE | Iron |
| GT | Graphite |
| HG | Mercury |
| MO | Molybdenum |
| N | Nickel |
| PB | Lead |
| PT | Platinum |
| SB | Antimony |
| WO | Tungsten |
| ZN | Zinc |