

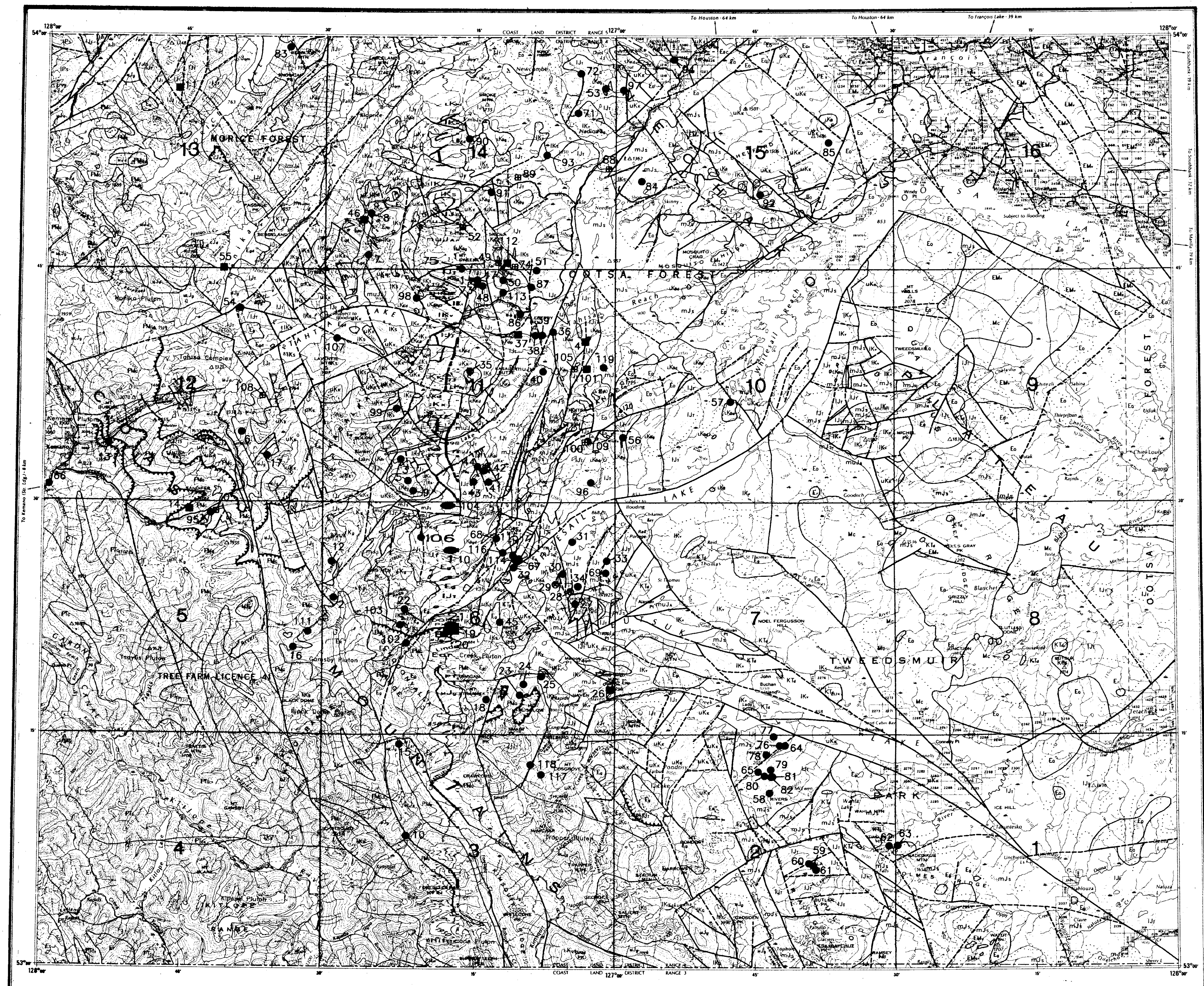
GEOLOGICAL LEGEND

LAYERED ROCKS

- MIOCENE TO PLEISTOCENE**
- CHILCOTIN GROUP**
Olivine basalt flows; thick, massive, columnar jointed, flat lying; includes olivine basalt necks and plugs.
- Eocene to Lower Miocene**
- ENDAKO GROUP**
Basalt and andesite, massive, vesicular and amygdaloidal minor breccia and tuff, aphyric to blebbed plagioclase porphyry.
- BUCK CREEK FORMATION**
Andesite and basalt flows, fine grained, amygdaloidal, flat lying; includes dacite to basalt, mostly andesite, 43-48 Ma.
- GOOSLY LAKE FORMATION**
Trachyandesite, trachyte and basalt; tabular feldspar phenocrysts, glomerophenocrysts to 1 cm; includes minor syenite.
- OOTSALAKE GROUP**
Predominantly rhyolite, flow banded, spheroidal, quartz and biotite phytic phases; biotite may include small intrusions 49-53 Ma; includes **WHITESAIL VOLCANIC COMPLEX**: rhyolite to rhyolite flows, ash-flow tuff, debris flows, porphyritic dacite, crystalline air fall tuff, andesite flows and breccia. Includes Arete Mountain and Swing Peak outcrops.
- PALEOCENE and Eocene or Younger**
- Devonian, Carboniferous and Permian**
- STIKINE ASSEMBLAGE**
Undivided strata of probable Permian or older age; includes carbonate, flow-layered and spherulitic rhyolite and flow breccia; intermediate tuff, lapilli tuff, ash-flow tuff, basalt and andesite flows, tuff and silt.
- PALEOZOIC - TERTIARY (?)**
- CENTRAL GNEISS COMPLEX (COAST BELT)**
Orthogneiss, migmatite, granitoid gneiss, amphibolite; subordinate unfoliated plutonic rocks; includes areas of undifferentiated Et (Tsayits Plutonic Suite).
- QUARTZ-FELDSPAR-BIOTITE SCHIST, hornblende schist, amphibolite; lesser granitic gneiss; minor marble and granitoid dikes; amphibolite facies.**
- INTRUSIVE ROCKS**
- PALEOCENE TO EOCENE?**
- COAST PLUTONIC COMPLEX (50 - 55 Ma):** granitoid stocks. Medium to coarse-grained, biotite ± hornblende granite, granodiorite, minor quartz diorite. Includes co-genetic dike swarms.
- Biotite granodiorite with sphene ± hornblende, medium grained.**
- GOOSLY INTRUSIONS:** syenononzoite to gabbro stocks and dykes, blebbed feldspar phenocrysts, 46-54 Ma.
- Rhyolite, quartz-feldspar porphyry; plugs, domes and dikes. Possible intrusive equivalent of Ootsa Lake Group rhyolite flows.**
- NANIKA INTRUSIONS:** grey to pink, porphyritic (E) to non-porphyratic granite, quartz monzonite, granodiorite; includes minor rhyolite and quartz porphyry as small stocks, plugs, dykes and sills; 47-54 Ma.
- QUANCHUS INTRUSIONS:** grey to pink feldspar porphyry of granitic to quartz dioritic composition, lesser non-porphyratic granite, granodiorite.
- TSAYITS PLUTONIC SUITE, granodiorite, quartz monzonite, tonalite, granite; generally fresh and with biotite ± hornblende, commonly well-foliated, restricted to the Coast Belt.**
- LATE CRETACEOUS TO EARLY TERTIARY (PALEOCENE)**
- Granodiorite, quartz monzonite, quartz diorite, lesser granite; biotite or biotite-hornblende, generally unfoliated and non-porphyratic.**
- Diorite, gabbro, microdiorite, syenodiorite, partly equivalent to Kasalka Intrusions.**
- LATE CRETACEOUS**
- Granodiorite, quartz monzonite, granite, lesser tonalite, generally equigranular and unfoliated to weakly foliated, includes Muskow, Horetzky Dykes.**
- BULKLEY INTRUSIONS:** biotite-hornblende granodiorite (K) to quartz diorite (Kq), diorite (Kd), quartz monzonite (Kz), rhyolite and quartz-feldspar porphyry (Kp), feldspar porphyry, biotite-hornblende-feldspar porphyry, biotite-feldspar porphyry, hornblende feldspar porphyry (LKa), minor andesite, felsite, apatite, alkali and intrusive breccia, stocks, plugs, sills and dykes; 64 to 84 Ma.
- KASALKKA INTRUSIONS:** crowded hornblende granodiorite porphyry, porphyritic hornblende single microdiorite, small stocks and dykes, necks.
- MIDDLE CRETACEOUS**
- Quartz diorite, granodiorite, leuco-granodiorite, minor granite.**
- JURASSIC**
- Post kinematic stocks; porphyritic to non-porphyratic, pink, quartz monzonite, biotite-hornblende granodiorite, quartz monzonite, unfoliated plutons.**
- MIDDLE TO LATE JURASSIC**
- GAMBSY COMPLEX:** well-foliated, green, chloritized quartz diorite, lesser augen gneiss and chlorite schist; may grade into UKa. Includes Whitesea pluton.
- MIDDLE JURASSIC**
- TRAPPER PLUTONIC SUITE:** weakly to well-foliated quartz diorite, granodiorite and tonalite, lesser granite, orthogneiss; greenish to amphibolite facies.
- THREE SISTERS PLUTONIC SUITE (172 - 177 Ma):** Medium to coarse-grained gabbro, diorite and syenite.
- EARLY JURASSIC**
- TOPLEY INTRUSIONS:** granodiorite, quartz diorite, diorite (L) to minor granite.
- GAMBSY COMPLEX:** hornblende diorite, tonalite, lesser greenstone and felsic metavolcanic rocks, cut by granodiorite, tonalite and metabasalt dykes; metamorphosed to greenschist facies; includes Tahisa Complex and southern part of Morice Lake plutonic complex.
- LATE TRIASSIC TO EARLY CRETACEOUS**
- BLACK DOME COMPLEX:** pre-kinematic gabbro to granodiorite complex of layered gabbro and diorite, tonalite, granodiorite, lesser mafic dike swarms, amphibolite and greenstone, strongly foliated to unfoliated, part of Gambsy Complex.

Reference

MacIntyre, D.G., Ash, C.H. and Britton, J.M. (1984). Geological Compilation, Skeena-Nass Area, West Central British Columbia (NTS 93 E, L, M, 94D; 103 G, H, I, J, O, P, 104 A, B); B.C. Ministry of Energy, Mines and Petroleum Resources, Open File 1984-14.



BC
Ministry of Energy, Mines and Petroleum Resources

1895 - 1995
100
YEARS OF BRITISH COLUMBIA

Geological Survey Branch
**MINFILE MAP
NTS 093E
WHITESAIL LAKE**

This MINFILE release researched and compiled by:
G. Foye and G. Owsiacik.

Date Revised: March 1995
Scale 1:250 000

0 5 10 15 20
Kilometres

Total Number of Mineral Occurrences: 119

Status	103I	93L	93K
Producer	103H	93F	93F
Partial Producer			
Developed Prospect			
Prospect			
Showing			

MAP LEGEND - 093E

MINFILE NUMBER	NAME	COMMODITIES
001	EMERALD GLACIER	ZN AG PB CU AU CD MO
002	TRITSA (LAK)	CU MO AU AG
003	OX LAKE	CU MO B ZN
006	TRITSA (MAIN)	CU MO B ZN
007	TAHISA RANGE	AG PB CU AU
008	LEAS SPRING	AG PB ZN CU MO
010	KIM	CU MO ZN
011	KIM MOUNTAIN	CU MO ZN AG PB
012	ICE	CU MO ZN
013	FRYLEDANNE	CU MO ZN
014	SMITH MASH	CU MO ZN
016	LAKE LAKE	CU MO ZN
017	SANDY LAKE	CU MO WO ZN PB
018	SHAW	CU MO ZN
019	UNDEVELOPED	AG AU WO ZN PB CU
021	OLD TIMER	AG PB ZN
022	MARLOWORTH	AG ZN PB CU MO
023	THREE SEARS	AG AU ZN
024	BAR	AG AU ZN
026	REDBIRD	AG AU ZN
027	BAR	AG AU ZN
028	NICKEL PLATE	AG AU ZN
029	ROOSEVELT	AG AU ZN
030	DAD'S SPECIAL	ZN PB AG
031	MENARD	ZN PB AG
032	ACE	CU MO ZN
034	DEUCE	CU MO ZN
036	CAPTAIN	AG PB ZN AU CU
037	REVERDICE	AG AU ZN
038	HUCKLEBERRY	CU MO AG AU
039	LEN 48	CU MO AG
040	SEA	CU MO AG
041	SEA	CU MO AG
042	FAB 49	CU MO ZN
043	FAB 44	CU MO ZN
044	FAB 45	CU MO ZN
045	SEA	CU MO ZN
047	GLACIER	AG AU ZN
048	STANLEY	AG AU ZN
049	WHITING CREEK (RUSTY)	AG AU ZN
050	WHITING CREEK (CREEK)	AG AU ZN
051	ORIENTAL	AG AU ZN
052	BRISSETTE	AG AU ZN
053	NEW HANK	AG AU ZN
054	TSAR	AG AU ZN
055	NEW HANK	AG AU ZN
056	WHITESAIL RANGE	AG AU ZN
057	WHITESAIL OUTLET	AG AU ZN
058	PINE	AG AU ZN
059	RETNAHONTE	AG AU ZN
060	SANGLORP	AG AU ZN
061	DOLLY'S HILL	AG AU ZN
062	TWO SEARS HILL	AG AU ZN
063	SPECTULAR	AG AU ZN
064	RENE	AG AU ZN
065	RON 47	AG AU ZN
066	STEWART	AG AU ZN
067	LEAS	AG AU ZN
068	SLEEPER	AG AU ZN
069	TRAPPER GROUP	AG AU ZN
070	KAYO	AG AU ZN
071	SEA	AG AU ZN
072	L & H	AG AU ZN
073	DOMINION	AG AU ZN
074	SIROLA MOUNTAIN	AG AU ZN
075	GRAND VIEW	AG AU ZN
076	SEA	AG AU ZN
077	RON 2	AG AU ZN
078	RON 43	AG AU ZN
079	RON 48	AG AU ZN
080	RON 4	AG AU ZN
081	RON 10	AG AU ZN
082	RON 10	AG AU ZN
083	RON 10	AG AU ZN
084	TETSFORD HILLS	AG AU ZN
085	WEB	AG AU ZN
087	SUS	AG AU ZN
088	PAMA	AG AU ZN
089	STEVIA	AG AU ZN
090	SEA	AG AU ZN
091	TARA	AG AU ZN
092	SEA	AG AU ZN
093	SEA	AG AU ZN
094	OLYS	AG AU ZN
095	BEAVER 7	AG AU ZN
096	SEA	AG AU ZN
098	SEA	AG AU ZN
099	RICE	AG AU ZN
100	TRITSA PEAK	AG AU ZN
101	OX	AG AU ZN
102	PANE	AG AU ZN
103	FRACK	AG AU ZN
104	SAMUEL	AG AU ZN
105	LEAS TO	AG AU ZN
106	CHORRELLA	AG AU ZN
107	GOLDEN GOOSE	AG AU ZN
108	HOP	AG AU ZN
109	BARB	AG AU ZN
110	COLLE	AG AU ZN
111	MURDO	AG AU ZN
112	WHITING CREEK	AG AU ZN
113	WHITING CREEK (SWEENEY)	AG AU ZN
114	CORE A	AG AU ZN
115	CORE F	AG AU ZN
116	CORE C	AG AU ZN
117	POOL SAM (DISCOVERY)	AG AU ZN
118	POOL SAM (DICK)	AG AU ZN
119	OX-EAST	AG AU ZN
120	NORTHERN LIGHTS	OP GS

COMMODITY LEGEND

CODE INDEX	COMMODITY INDEX
AG	Silver
AU	Gold
BA	Barite
B	Bismuth
CD	Cadmium
CU	Copper
CO	Cobalt
MO	Molybdenum
PB	Lead
ZN	Zinc
AG	Silver
AU	Gold
BA	Barite
B	Bismuth
CD	Cadmium
CU	Copper
CO	Cobalt
MO	Molybdenum
PB	Lead
ZN	Zinc