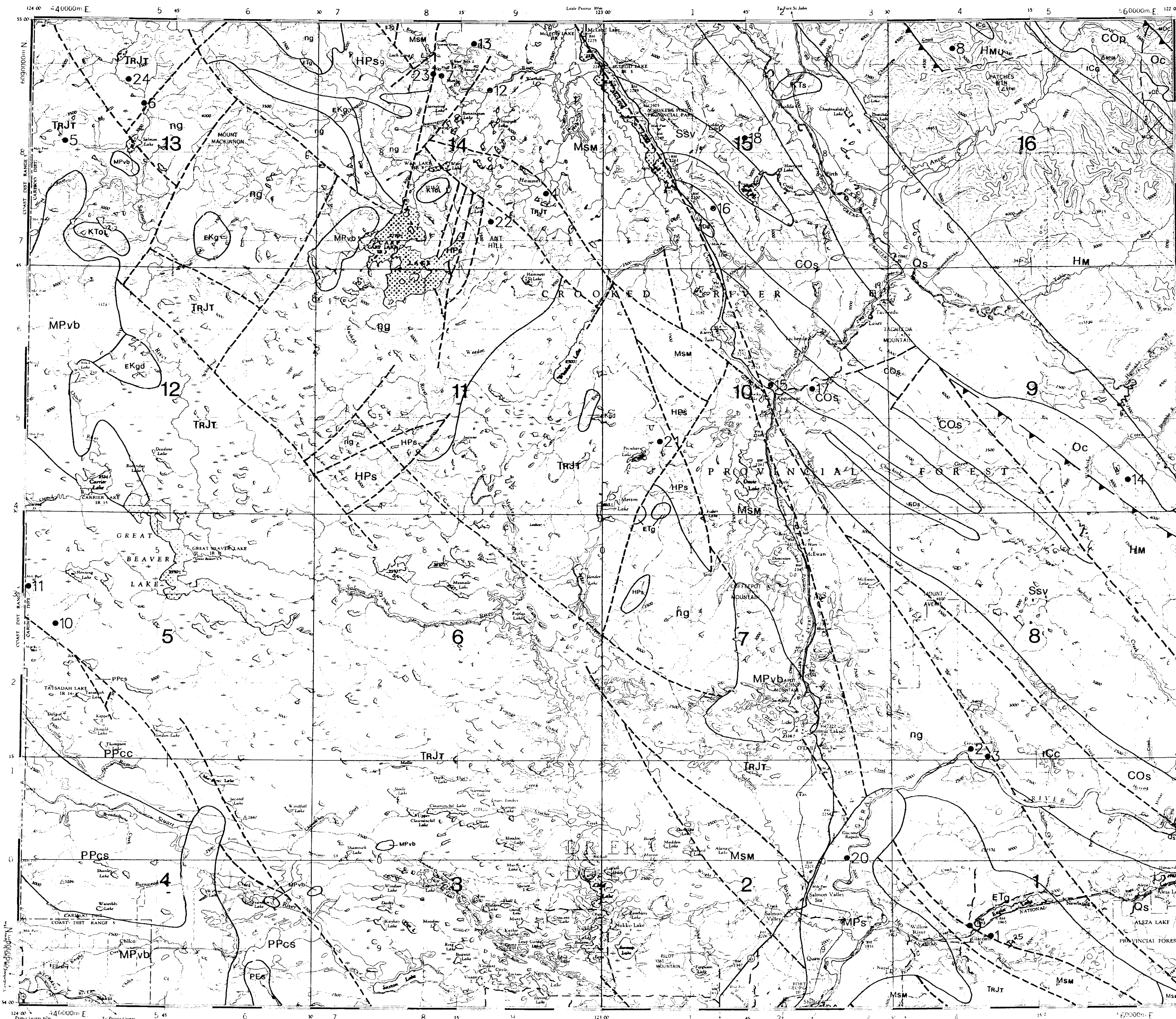


GEOLOGICAL LEGEND

STRATIFIED ROCKS

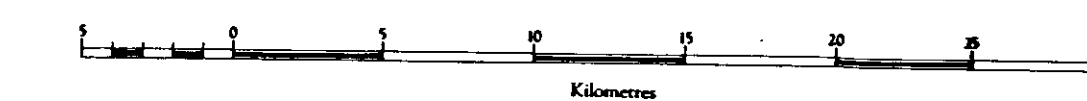
- QUATERNARY**
PLEISTOCENE AND RECENT
Qs Till, gravel, sand, silt, alluvium
- TERTIARY**
MIOCENE AND PLEISTOCENE
MPvb Olivine basalt flows, breccia, tuff
MPs Sandstone, shale, conglomerate, diatomite, lignite
- PALEOCENE, EOCENE**
PEs Conglomerate, sandstone, mudstone, lignite
- UPPER CRETACEOUS AND LOWER TERTIARY**
OTSA LAKE GROUP: Rhyolite, dacite, trachyte, sandstone, shale, conglomerate
KTol
KTs SIFTON FORMATION: conglomerate, breccia, sandstone, shale, coal
- UPPER TRIASSIC AND LOWER JURASSIC**
TRJT TAKLA OR NICOLA GROUP: Andesite, basalt, tuff, breccia, conglomerate, greywacke, shale, limestone
- MISSISSIPPIAN TO TRIASSIC**
CACHE CREEK GROUP
PPcc Limestone, minor chert, argillite, greenstone
PPcs Ribbon chert, black argillite, limestone, greenstone
- MISSISSIPPIAN TO PENNSYLVANIAN**
MSM SLIDE MOUNTAIN GROUP: Basalt, breccia, tuff, chert, argillite, sandstone, limestone, conglomerate
- DEVONIAN**
MIDDLE DEVONIAN
MDc STONE, MUNCHO-McCONNELL, PINE POINT: Dolomite, limestone, shale
- SILURIAN (?) AND DEVONIAN**
SDs Limestone, dolomite, sandy dolomite, quartzite, shale
- SILURIAN**
Ssv SANDPILE GROUP: Limestone, dolomite, quartzite, shale, greenstone sills and flows
- ORDOVICIAN**
Oc CHUSHINA, MONKMAN, BEAVERFOOT: Limestone, sandstone, dolomite, shale, quartzite
- CAMBRIAN AND ORDOVICIAN**
COp Shale, calcareous shale, limestone, dolomite
COs KECHIKA GROUP: Limestone, shale, quartzite
- CAMBRIAN**
UPPER CAMBRIAN
uCL LYNX FORMATION: Limestone, dolomite
- LOWER CAMBRIAN**
ICg GOG GROUP: Quartzite, siltstone, limestone, shale
- HADRYNIAN AND PALEOZOIC**
HPs SNOWSHOE GROUP: Quartzite, phyllite
HMu MIETTE GROUP (upper): Phyllite, argillite, sandstone, limestone conglomerate
HM MIETTE GROUP: Undivided
- PLUTONIC ROCKS**
- TERTIARY**
EARLY TERTIARY (Mainly)
ETg Quartz monzonite, granodiorite, quartz diorite
- CRETACEOUS**
EARLY CRETACEOUS (in whole or in part)
EKg NAVER INTRUSIONS: Quartz monzonite, syenite, monzonite, granodiorite, diorite
EKgd Granodiorite, quartz diorite, minor granite, syenite, gabbro, pyroxenite
- AGE UNKNOWN**
WOLVERINE METAMORPHIC COMPLEX
ng Granitoid gneiss, pegmatite, schist, amphibolite, quartzite
- Geological legend and base derived from:
Tipper, H.W., R.B. Campbell, G.C. Taylor and D.F. Stott (compilers) (1974): Parsnip River, Sheet 93, Geological Survey of Canada, Map 1424A, 1:1,000,000
Muller, J.E., H.W. Tipper, J.E. Armstrong and J.W. Hoadley (1969): McLeod Lake, Geological Survey of Canada, Map 1204A, 1:253,440



Province of British Columbia
Ministry of Energy, Mines and Petroleum Resources

MINFILE MAP 093J MCLEOD LAKE MINERAL OCCURRENCE MAP

Scale 1:250 000



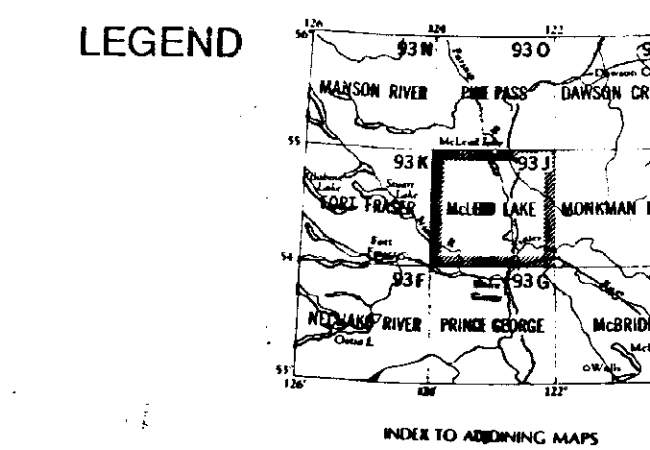
This project is a contribution to the Canada/British Columbia Mineral Development Agreement 1985-1990.

Province of British Columbia Ministry of Energy, Mines and Petroleum Resources
Energy, Mines and Resources Canada Énergie, Mines et Ressources Canada

DATE REVISED: SEPTEMBER 1989
DATE UPDATED: APRIL 1991

TOTAL NUMBER OF OCCURRENCES: 24
:25

- STATUS**
- Producer
 - Past Producer
 - Developed Prospect
 - Prospect
 - Showing



MAP LEGEND 093J

MINFILE NUMBER	NAME	COMMODITIES
001	SANDON	ZK PB AG CU UR
002	ADA	MO AG PB CU
003	SILVER	PB ZK AG MO UF
004	ANT	CU
005	SALMON LAKE	AU PT
006	SALMON RIVER	AU PT
007	NICOLOGLI RIVER	AU PT
008	CRUZATEGA CREEK	PT ZK MO CU
009	EAGLE LAKE	PT
010	MOUNT PRINCE SOUTHEAST	NC
011	MOUNT PRINCE NORTHWEST	NC
012	MCLEOD RIVER	AU PT
013	STYKATIE	AU CU
014	PRINCE	NS RS LA CE PP
015	REDDOCKY CREEK	LS
016	MILE 72	AT
017	ANGUSONC	LS
018	MCLEOD LAKE	DO
019	TACHEDA LAKES LIMESTONE	LS
020	GISCOME RAPIDS	CY KA
021	SUMMIT	PT
022	CAMP LAKE	PT
023	WIB	AU AG PB
024	WINDY	CU AU PD
025	GISCOME LIMESTONE	LS

COMMODITY LEGEND

CODE (INDEX)	COMMODITY	COMMODITY (INDEX)	CODE
AG	Silver	Aggregate	CE
AT	Aggregate	Cerium	CE
AU	Gold	Clay	CL
CA	Carbon	Copper	CU
CU	Copper	Solomite	DO
CL	Clay	Gold	DO
CE	Dolomite	Graphite	GT
GT	Graphite	Lead	LA
LA	Lead	Lanthanum	LA
LA	Lanthanum	Limestone	LS
LS	Limestone	Mercury	ME
ME	Mercury	Nickel	NC
NC	Nickel	Phosphate	PP
PP	Phosphate	Platinum	PT
PT	Platinum	Rare Earths	RE
RE	Rare Earths	Silver	RS
RS	Silver	Tungsten	TR
TR	Tungsten	Zinc	ZK
ZK	Zinc		