

BC
Ministry of Energy, Mines and
Petroleum Resources

Geological Survey Branch
**MINFILE MAP
NTS 093M
HAZELTON**

This MINFILE release researched and compiled by:
Ron McMillan

Date Revised: March 1992
Date Updated: September 1995

Scale 1:250 000

Total Number of Mineral Occurrences: 194

Status

- Producer
- Past Producer
- Developed Prospect
- Prospect
- Showing

104 A	094 D	094 C
103 P	093 M	093 N
103 I	093 L	093 K

GEOLOGICAL LEGEND

STRATIFIED ROCKS

CENOZOIC

QUATERNARY

PLEISTOCENE AND RECENT

Qal Till, gravel, sand, silt, alluvium

TERTIARY

Eocene and Tertiary

Eo Rhyolite, dacite, basalt, intercalated and related sedimentary rocks (includes OOTSA LAKE GROUP, MORICETOWN sediments and volcanics, TZEZAKWA CREEK sediments)

MESOZOIC

CRETACEOUS

UPPER CRETACEOUS

uKk KASALKA GROUP: Andesitic to rhyolitic flows, breccia, tuff, intercalated sedimentary rocks, related silt, dykes and intrusive domes (includes BRIAN BORU FORMATION, SUKWA volcanics, CROWN volcanics and FRENCH PEAK volcanics)

LOWER TO UPPER CRETACEOUS

Kt SUSTUT GROUP: Conglomerate, shale, greywacke (TANGO CREEK FORMATION)

Ks SKEENA GROUP: Conglomerate, greywacke, shale, coal, carbonaceous units, volcanic breccia, flows, tuff, later, greenstone (includes RED ROSE FORMATION, ROCKY RIDGE FORMATION, HANAWALD conglomerate, KITSUMKALUM shale and KITSUNS CREEK FORMATION)

MIDDLE JURASSIC TO LOWER CRETACEOUS

uKb BOWSER LAKE GROUP: conglomerate, greywacke, siltstone, shale and argillite, minor coal, carbonaceous units and volcanic rocks (includes METALZUL and TROUT CREEK FORMATIONS)

JURASSIC

MIDDLE AND UPPER JURASSIC

mJSA HAZELTON GROUP AND BOWSER LAKE GROUP

mJA SMITHERS AND ASHMAN FORMATIONS: Shale, greywacke, breccia, tuff, conglomerate

LOWER JURASSIC

uJm HAZELTON GROUP

uJm Basalt, andesite, breccia, tuff, shale, siltstone (includes TELKWA FORMATION, NIKITKWA FORMATION AND SADDLE HILL volcanics)

TRIASSIC

UPPER TRIASSIC

uTr TAKLA GROUP (STUHNI GROUP, SAVAGE MOUNTAIN FORMATION): Andesite, basalt, tuff, breccia, conglomerate, greywacke, shale, limestone

PALEOZOIC

CARBONIFEROUS AND PERMIAN (possibly some UPPER TRIASSIC)

Cpc CACHE CREEK GROUP: Metasedimentary rocks, schist, greenstone, serpentine

PLUTONIC ROCKS

CENOZOIC

TERTIARY

EARLY TERTIARY

eTp BABINE, KASTBERG AND MANIKA INTRUSIONS: Mainly porphyritic rocks with biotite, hornblende and feldspar phenocrysts, diorite, granodiorite, quartz monzonite, rhyolite

MESOZOIC

CRETACEOUS

LATE CRETACEOUS

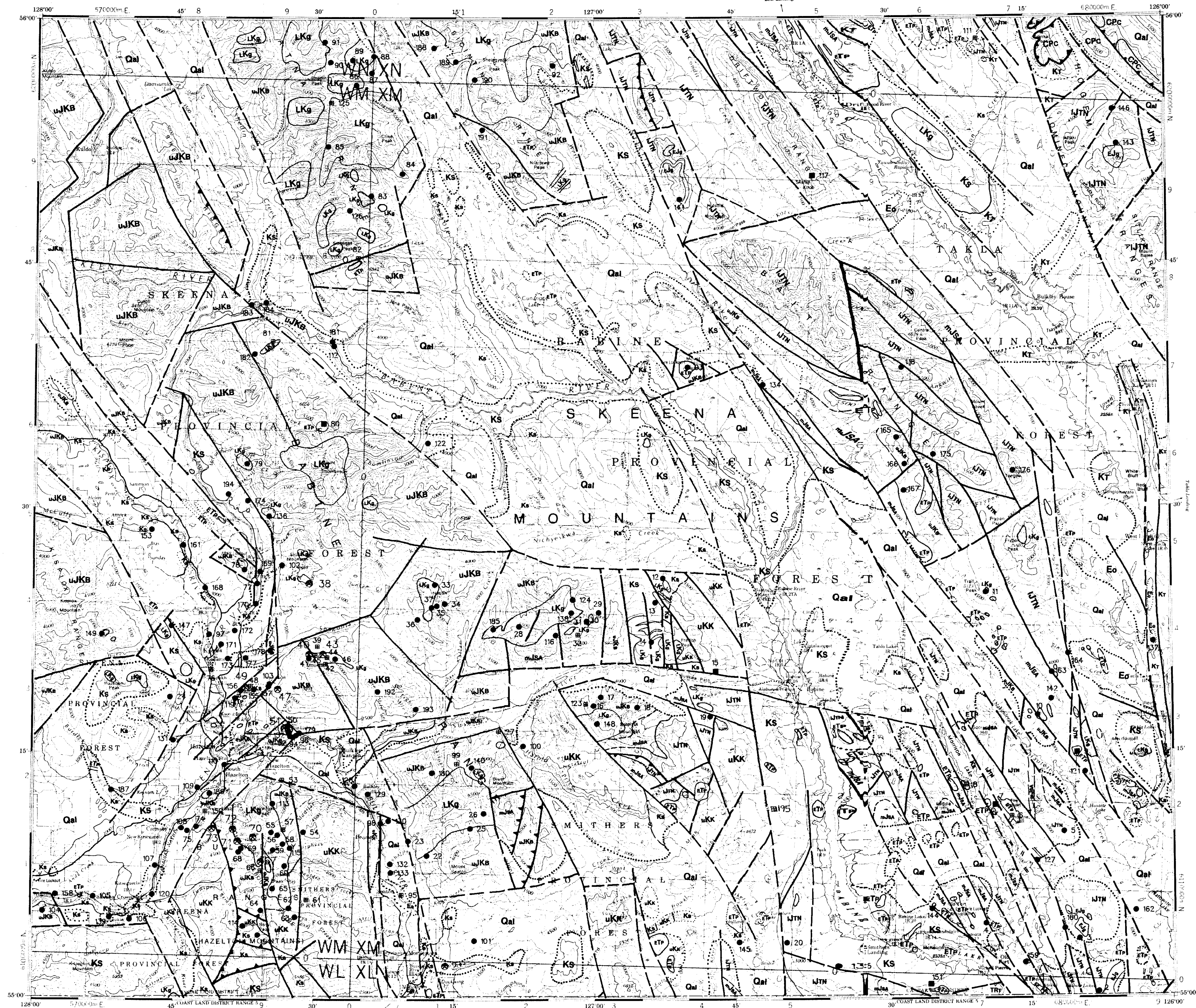
LKq Quartz monzonite, granodiorite, quartz diorite, porphyritic and gabbroic equivalents, minor granite, monzonite, gabbro (mainly BULKLEY INTRUSIONS)

JURASSIC AND EARLIER

LATE TRIASSIC TO JURASSIC

Ejg Quartz diorite, diorite, minor granite (OMINECA AND TOPYLE INTRUSIONS)

Geological legend and base derived from:
Tappe, H.W., Campbell, R.B., Taylor, G.C. and Scott, D.F., Compilers (1974): Parsip River, Sheet 93; Geological Survey of Canada, Map 1434K, 1:100,000
Richards, T.A. (1990): Geology and Mineral Deposits of Hazelton Map Area (93M), British Columbia; Geological Survey of Canada, Open File 2322, Sheets 1 and 2, 1:250,000
Carter, H.C. (1961): Porphyry Copper and Molybdenum Deposits, West-central British Columbia; B.C. Ministry of Energy, Mines and Petroleum Resources, Bulletin 04, Figure 6, 1:500,000



MAP LEGEND - 093M

MINFILE NUMBER	NAME	COMMODITIES
001	BELL	CU AU ZN PB MO
002	MAG	PB ZN CU
003	SNOOPY	CU MO
004	CLIF FORT	CU MO
005	JAKE	CU MO
006	KOTI	CU MO
007	JARVIS	CU MO
008	WOLF	CU MO
009	DOROTHY	CU MO
010	NAKINERAK LAKE	CU ZN CU PB
011	TRAIL PEAK	AG AU ZN PB
012	FRENCH	CU AU ZN PB
014	SNOW	CU MO PB ZN AG
015	FRENCH PEAK	AG AU PB ZN
016	DABY	MO CU
017	HUGHES	AG AU PB ZN CU
018	NETALZUL	AG
019	COPPER	CU
020	WASP	AG PB ZN AU
021	VIRGINIA SILVER	CU
022	LONO CREEK #2	CU
023	LONO CREEK #1	AG AU ZN PB CU AS
024	MO	CU
025	MOUNT SEATON	CU MO
026	BLUNT	AG AU PB ZN SB
027	MAX	AG AU PB ZN SB
028	BERGSTEN	PB ZN AG
029	INGO	CU AU AG
030	D.C. COPPER	AG AU PB ZN
031	D	AG PB ZN AU
032	TRIE FISSURE	AG PB ZN AU
033	NATAL	MO CU
034	JACK OF HEARTS	CU
035	ACE 8	CU MO SB
036	BABINE RANGE	PB
037	ACE 9	CU MO
038	SILVERTON	AG AU ZN PB AS MO
039	BABINE HILL	AG AU ZN SB AS
040	SILVER CUP	AG PB ZN AU SB
041	POLE STAR	AG AU ZN AU SB
042	SLOCAN	AG PB ZN SB AS
043	SLAWIE (L. 598)	AU CU AU CU SB
044	LEAD KING	AG PB ZN SB AS
045	CUP	AG AU ZN AU SB
046	SILVER PICE	PB ZN AU
047	AMERICAN BOY	AG AU ZN AU SB
048	SURPRISE	AG PB ZN AU CU CD
049	SILVER STANDARD (L. 2262)	AG AU ZN AU SB
050	BABINE (L. 1358)	AG PB ZN CU SB
051	MOSHAWK (L. 6248)	AG AU ZN AU SB
052	COMET (L. 3278)	AG AU ZN SB
053	DAILY WEST	AG AU MO PB ZN WO
054	LONG RIVER	PB
055	SILVERT PLACER	MO CU MO UR AG CU
056	BLUE LAKE	MO AU MO UR AG CU
057	BLACK PRINCE (L. 2411)	AG AU PB WO UR CU MO
058	POPPY CREEK NORTH	MO
059	BALSAM	CU
060	TNA	MO
061	SULTANA	AG CU MO AU
062	BIG THING	CU MO
063	MT	AG CU MO
064	BRIAN BORU (L. 607, 608)	AG ZN
065	JUPITER	MO CU AU PB AU CU
066	BRUNSWICK	WO CU AU AG MO UR
067	RED ROSE	WO CU AU AG MO UR
068	ARMADILLA	CU MO
069	GREAT OHIO (L. 702)	CU AU UR UR WO SN
070	HOLMAN BOY	CU AU WO ZN PB UR
071	ROCHE BRIDLE	CU AU AG MO UR UR
072	VICTORIA (L. 3308)	CU AU ZN
073	CAF	CU AU AG UR CO WO
074	GOLDEN WONDER (L. 3322)	CU
075	SILVER BELL	AG AU ZN PB
076	THREE HILL	MO
077	TERAS	MO CU ZN SB WO
078	LAURA	MO CU WO ZN PB
079	GOLDEN THOMLINSON	AG AU MO ZN PB
080	MOUNT THOMLINSON	MO CU WO ZN PB
081	GOATHEAD	MO CU WO ZN PB
082	ICEFIELDS	MO
083	ICI	MO CU PB AG
084	PEAK	MO CU
085	PEAK	MO CU
086	ATNA SILVER	AG PB ZN
087	ATNA	CU
088	ATNA	CU
089	JAN 2	CU MO
090	JAN 1	CU MO
091	MOUNT HORETZKY	CU MO
092	DORCO	AG AU ZN SB
093	SEATON	AG AU ZN SB
094	PINK CADLAC	AG AU ZN SB
095	KISPROX	CU PB ZN AU AG SB
096	CHINA CREEK	AG AU PB ZN CU SB
097	SKLOUIS	AG AU ZN PB CU AS HG
098	KNOLL	ZN SB
099	NEONA CREEK	AG AU ZN PB CU AS HG
100	NEONA CREEK	AG AU ZN PB CU AS HG
101	NEONA CREEK	AG AU ZN PB CU AS HG
102	NEONA CREEK	AG AU ZN PB CU AS HG
103	NEONA CREEK	AG AU ZN PB CU AS HG
104	NEONA CREEK	AG AU ZN PB CU AS HG
105	NEONA CREEK	AG AU ZN PB CU AS HG
106	NEONA CREEK	AG AU ZN PB CU AS HG
107	NEONA CREEK	AG AU ZN PB CU AS HG
108	NEONA CREEK	AG AU ZN PB CU AS HG
109	NEONA CREEK	AG AU ZN PB CU AS HG
110	NEONA CREEK	AG AU ZN PB CU AS HG
111	NEONA CREEK	AG AU ZN PB CU AS HG
112	NEONA CREEK	AG AU ZN PB CU AS HG
113	NEONA CREEK	AG AU ZN PB CU AS HG
114	NEONA CREEK	AG AU ZN PB CU AS HG
115	NEONA CREEK	AG AU ZN PB CU AS HG
116	NEONA CREEK	AG AU ZN PB CU AS HG
117	NEONA CREEK	AG AU ZN PB CU AS HG
118	NEONA CREEK	AG AU ZN PB CU AS HG
119	NEONA CREEK	AG AU ZN PB CU AS HG
120	NEONA CREEK	AG AU ZN PB CU AS HG

MAP LEGEND - 093M

MINFILE NUMBER	NAME	COMMODITIES
121	MAST	CU MO WO PB
122	THOMLINSON CREEK	CU MO WO PB
123	ELEN	AG AU CU MO PB
124	SUSKWA	CU MO
125	COO	MO CU AU CU PB ZN MO
126	KIRGEGAS	CU
127	WOLF	CU
128	IBB	CU
129	BULKLEY RIVER PLACER	CU
130	IBB	CU
131	CEDAR CREEK	CU
132	SHARP CREEK	CU
133	BULKLEY RIVER COAL	CL
134	IBB	CU
135	BIG JOE	CU
136	SAL	CU
137	BEAR HILL	CU AG BA ZN PB
138	COPPER BASIN	CU AU AG
139	SKEENA CROSSING	CU
140	CREEK	ZN
141	KOTI	PB
142	LYNN	CU MO
143	LYNN	CU MO
144	FORT	CU MO
145	LYNN	CU MO
146	LION	AG
147	BURN	CU WO PB ZN
148	MAT	CU
149	DATE	MO
150	SEELY LAKE	CL
151	BREKEDY	AG PB ZN CU AU
152	IRON MASK (L. 3577)	AG ZN PB CU
153	SEPOX VALLEY	MR
154	JONES	CU AU PB ZN
155	CANADIAN QUEEN	AG AU PB ZN
156	SONNE	AG AU PB ZN
157	TWO MILE CREEK	CU AU PB ZN
158	SARON	CU AU PB ZN
159	SEVENMAN NORTH	CU AU PB ZN
160	SPARROWHAWK	CY
161	SOPHON RIVER CLAY	CU AU PB ZN
162	FRIDAY GREEN	CU
163	FRIDAY GREEN	CU
164	BOUCHER CREEK A	CU
165	BOUCHER CREEK B	CU
166	BOUCHER CREEK CENTRAL	CU
167	BOUCHER CREEK D	CU
168	SLIDE	CU
169	SLIDE	CU
170	SKEENA D	CU
171	SKEENA	CU
172	SHEOLINA	CU
173	SHEOLINA G	CU
174	SHEOLINA CREEK SLATE	CU
175	BATT RANGE	ZN
176	MOUNT TEESEE	AG CU PB ZN
177	WILLO	AG PB ZN
178	COLLINS LAKE	AG PB ZN
179	SLUANT MOUNTAIN	AG PB ZN
180	SLUANT MOUNTAIN	AG PB ZN
181	CHIEF CREEK	AG PB ZN
182	SHEOLIN CREEK WEST	AG PB ZN
183	SHEOLIN CREEK EAST	AG PB ZN
184	MOUNT THORN RANGE	AG PB ZN
185	CHICAGO CREEK	AG PB ZN
186	BURROCK CREEK	AG PB ZN
187	SICHTINE RANGE 1	MO
188	SICHTINE RANGE 2	MO
189	SICHTINE RANGE 3	MO
190	HOLMAN BOY	PB ZN
191	SICHTINE RANGE 4	CU
192	FIFTEEN MILE CREEK COAL	CL
193	SICHTINE MILE CREEK COAL	CL
194	SPRITTT CREEK COAL	CL
195	SPRITTT CREEK COAL	CU NG

COMMODITY LEGEND

CODE INDEX	COMMODITY INDEX
AG	Silver
AS	Antimony
AU	Arsenic
BA	Bauxite
CA	Calcium
CD	Coal
CE	Cellulose
CO	Cobalt
CP	Copper
CU	Copper
FE	Iron
GC	Gold
GR	Graphite
HG	Mercury
MO	Molybdenum
MR	Nickel
NI	Nickel
PB	Nickel
SB	Antimony
SN	Silver
ST	Stibnite
TR	Tin
UR	Uranium
WO	Tungsten
ZN	Zinc