

Geological Survey Branch MINFILE MAP NTS 094E TOODOGONE RIVER

This MINFILE release researched and compiled by: K.J. Mounjoy, W.H. Halleran and G. Owsicki Date Revised: December 1992 Scale 1:250 000

Total Number of Mineral Occurrences: 233

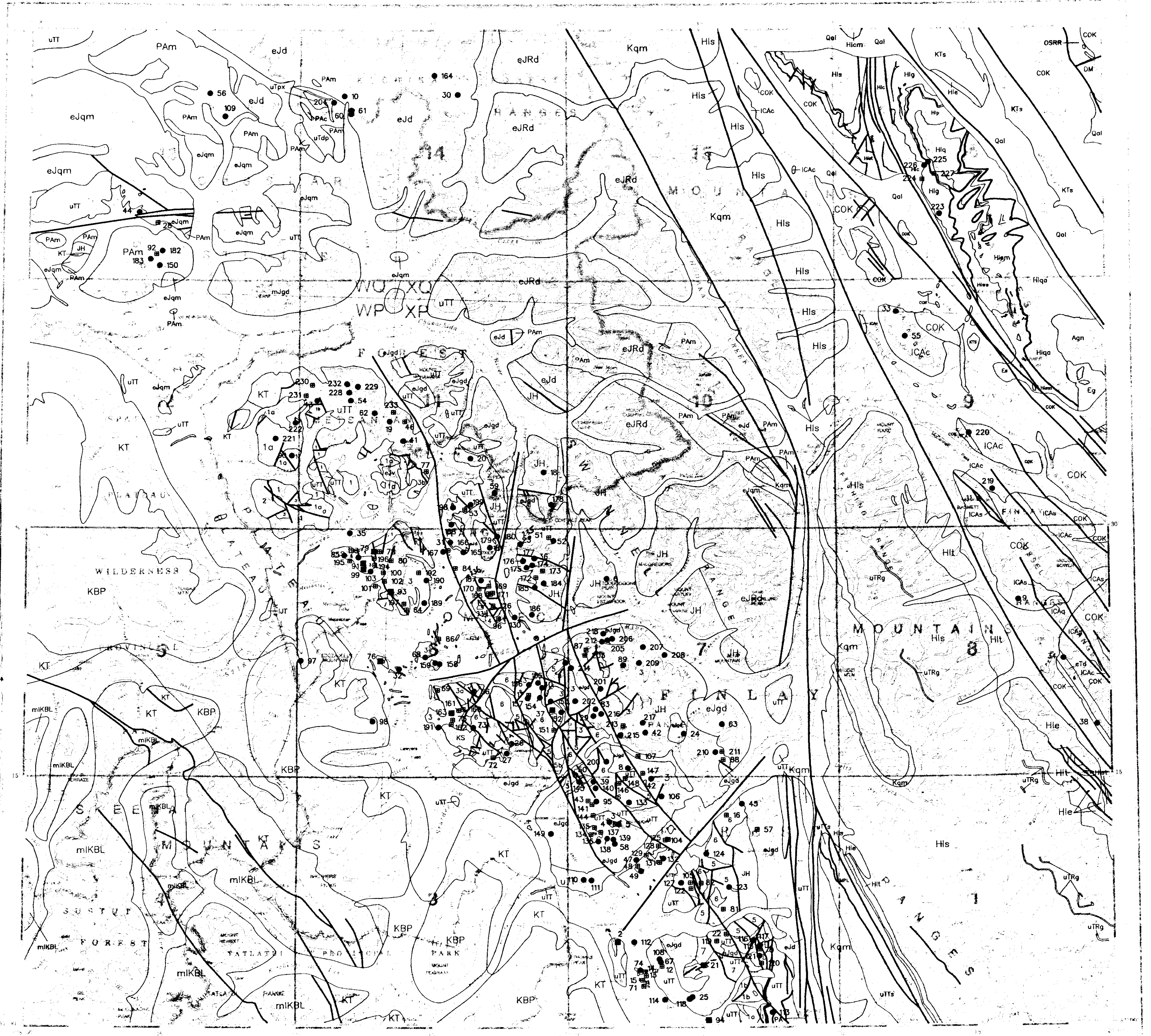
Map grid table showing coordinates and status legend with symbols for Producer, Past Producer, Developed Prospect, Prospect, and Showing.

VOLCANIC AND SEDIMENTARY ROCKS

- WEST OF THE NORTHERN ROCKY MOUNTAIN TRENCH: QUATERNARY, CRETACEOUS AND TERTIARY, MIDDLE TO UPPER CRETACEOUS, JURASSIC, LOWER JURASSIC, UPPER VOLCANIC CYCLE, LOWER VOLCANIC CYCLE, MIDDLE TRIASSIC, UPPER TRIASSIC, PERMIAN, LOWER MISSISSIPPIAN, CAMBRIAN TO ORDOVICIAN, PROTEROZOIC, HADRYANIAN, UPPER VOLCANIC CYCLE, LOWER VOLCANIC CYCLE, APHEBIAN.

EAST OF THE NORTHERN ROCKY MOUNTAIN TRENCH

- CRETACEOUS AND TERTIARY: UPPER CRETACEOUS TO EOCENE, DEVONIAN AND MISSISSIPPIAN, UPPER DEVONIAN AND LOWER MISSISSIPPIAN, ORDOVICIAN AND SILURIAN, CAMBRIAN AND ORDOVICIAN, UPPER CAMBRIAN, LOWER CAMBRIAN, INTRUSIVE ROCKS: TERTIARY EOCENE, CRETACEOUS, JURASSIC, MIDDLE JURASSIC, EARLY JURASSIC, TRIASSIC, MIDDLE TRIASSIC, LUNAR CREEK COMPLEX.



Geological map and legend compiled from: Oakes, H., Dalrymple, C.J. and Manly, J.L. (1975) Geology of Toodogone River (54E) and Wawa (54F); Evanschitzky, C.A. (1989) Stratigraphy, Metamorphism, Structure and their Tectonic Implications on the Slave and Deaneville Ranges, Cassiar and Northern Rocky Mountains, Northern British Columbia...

MAP LEGEND - 094E. Table listing MINFILE NUMBER, NAME, and COMMODITIES for various locations like MCLAR CREEK, RED RIVER, etc.

MAP LEGEND - 094E. Table listing MINFILE NUMBER, NAME, and COMMODITIES for various locations like DAVE PRICE, COLEMAN NEIGHBOR 2, etc.

COMMODITY INDEX table showing CODE INDEX and COMMODITY INDEX for various minerals like Coal, Copper, Iron, etc.