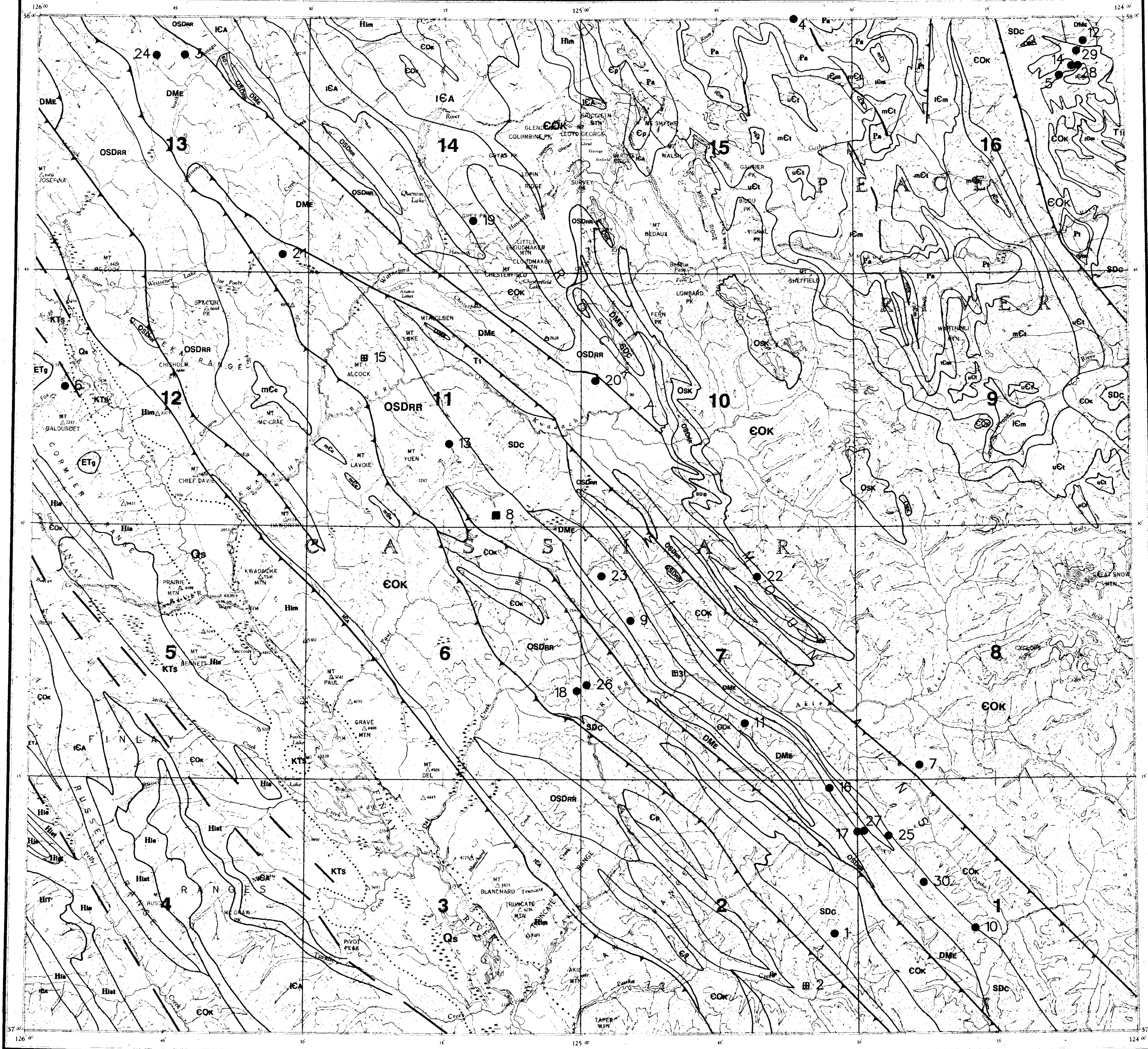


GEOLOGICAL LEGEND

- CENOZOIC**
TERTIARY AND QUATERNARY
 PLEISTOCENE AND RECENT
 Qa Gravel; sand; silt; clay; till
- STRATIFIED ROCKS**
- CENOZOIC AND MESOZOIC**
CRETACEOUS AND TERTIARY
 KTS SIFTON FORMATION: Conglomerate; shale; siltstone; coal; and dacitic volcanics.
- MESOZOIC**
TRIASSIC
 T1 TOAD, GRAYLING, LIARD, CHARLIE LAKE, BALDONNEL, PARDONET AND LUDINGTON FORMATIONS: Siltstone; limestone; dolostone; sandstone
- PALEOZOIC**
DEVONIAN AND MISSISSIPPIAN
 UPPER DEVONIAN TO LOWER MISSISSIPPIAN
 DME EARN GROUP: Argillite; slate; and shale
- SILURIAN TO MIDDLE DEVONIAN
 SDC DUNEDIN, STONE, AND MUNCHO-McCONNELL FORMATIONS: Dolostone; limestone; sandstone
- ORDOVICIAN, SILURIAN AND DEVONIAN**
 MIDDLE ORDOVICIAN TO MIDDLE DEVONIAN
 OSDRR ROAD RIVER GROUP AND NONDA FORMATION: Dolostone; limestone; sandstone
- MIDDLE ORDOVICIAN
 Osk SKOKI FORMATION: Dolostone
- CAMBRIAN AND ORDOVICIAN**
 UPPER CAMBRIAN AND LOWER ORDOVICIAN
 EOK KECHIKA GROUP: Phyllitic; calcareous siltstone and shale; limestone; sandstone; minor volcanic beds
- CAMBRIAN**
 UPPER CAMBRIAN
 vE1 Calcareous fine-grained turbidites; limestone debris flow; sandstone; shale and conglomerate.
- MIDDLE CAMBRIAN
 mE1 Siliceous fine-grained turbidite; sandstone; shale and conglomerate.
 mEe Massive limestone (in part oolitic)
- LOWER CAMBRIAN**
 ICA ATAN GROUP: Massive limestone; sandstone; quartzite; siltstone; shale; and minor quartz-pebble conglomerate.
 ICm Dolostone; sandstone; minor shale; thick basal sandstone; conglomerate.
 Ep Quartzite; orange weathering dolostone; minor siltstone and shale
- PROTEROZOIC AND PALEOZOIC**
UPPER PROTEROZOIC AND CAMBRIAN
 HADRYNIAN AND LOWER CAMBRIAN
 Hlm MISINCHINKA GROUP: Phyllitic and schistose pelite; quartzite; limestone; dolostone
- PROTEROZOIC**
UPPER PROTEROZOIC
 HADRYNIAN
 Hla Amphibolite; quartzite; crystalline limestone; augen gneiss
- INGENIKA GROUP (Hla to Hlm)
 Hlet STELKUZ FORMATION: Siltstone; shale; sandstone; limestone
 Hle ESPEE FORMATION: Oolitic and pisolitic limestone
 Hlr TSAYDIZ FORMATION: Sericitic phyllite
 Hls SWANNELL FORMATION: Quartz-feldspar gritty sandstone; conglomerate; minor limestone (and metamorphic equivalents from chlorite to kyanite grade)
- MIDDLE AND UPPER PROTEROZOIC**
 HELIKIAN
 Pa AIDA FORMATION: Dolomitic mudstone; siltstone; dolostone; minor chamositic and carbonaceous mudstone; limestone
 Pt TUCHODI FORMATION: Quartzite; dolostone; minor red shale; siltstone
- CENOZOIC**
TERTIARY
 EOCENE
 ETg Granite; quartz monzonite; migmatite; gneiss; and granodiorite; dacite dyke (ETd)

Geological legend and base map derived from:
 Taylor, G.C., compiler (1979). Tutch (E94G) and Ware (E94F) Map Areas, Geological Survey of Canada, Open File 906, scale 1:250 000.
 Gabrielle, H., Dorris, C.J., and Merry, J.L. (1971-1975); Elsbacher, G.H. (1969-1971); Toogood, S.W. (1966) and Ware (1966) (west half); Map Area, Geological Survey of Canada, Open File 463, scale 1:125 000.
 MacInnes, D.G. (1981). Geology of the Aka River Ba-Pb-Zn Mineral District, B.C. Ministry of Energy Mines and Petroleum Resources, Preliminary Map #4, scale 1:125 000.



BC
 Ministry of Energy, Mines and Petroleum Resources

Geological Survey Branch
MINFILE MAP
NTS 094F
WARE

This MINFILE release researched and compiled by:
 W.H. Halleran and G. Owsicki

Date Revised: May 1992
 Date Updated: 1995
 Scale 1:250 000

Total Number of Mineral Occurrences: 30
 31

Status

- Producer
- Past Producer
- Developed Prospect
- Prospect
- Showing

094L	094K	094J
094E	094F	094G
094D	094C	094B

MAP LEGEND - 094F

MINFILE NUMBER	NAME	COMMODITIES
001	ERN	ZN PB
002	WEDGE	CU
003	SPA	ZN BA VA AG UR FE
004	FRAM	CU AG PB
005	BLIE	CU AG
006	FOX PASS	CU WO MO
007	AKE RIVER	PB ZN AG BA
008	STRONSAY	CU ZN AG
009	FLUKE	PB ZN AG BA
010	CT	ZN PB BA
011	ELF	PB ZN BA AG
012	GRAYLING	CU AG NI CO PT
013	YULE	BA
014	WATERFALL	CU AG
015	MOUNT ALCOCK	ZN PB AG BA
016	GINOME	BA
017	GIN	BA
018	DEL	BA
019	GREY PEAK	UR
020	KWADACHA	BA
021	NORTH KWAD	BA
022	SIA	BA
023	PIE	BA PB ZN CU
024	SEAR	BA PB ZN AG
025	PESKA	BA
026	DEL EAST	BA
027	AKI	ZN AG
028	ATAN COPPER	CU AG
029	GRAYLING CREEK	CU AG
030	FAMILY	CU ZN
031	PKIE	PB ZN AG

COMMODITY LEGEND

CODE INDEX	COMMODITY INDEX
AG	Silver
BA	Barite
CO	Cobalt
CU	Copper
FE	Iron
MO	Molybdenum
NI	Nickel
PB	Lead
PP	Phosphate
PT	Platinum
UR	Uranium
VA	Vanadium
VO	Vanadium
ZN	Zinc