

GEOLOGICAL LEGEND

STRATIFIED ROCKS

TERTIARY

- Miocene and Pliocene
MPv Olivine basalt flows and breccia

CRETACEOUS

- Upper Cretaceous
SUSTUT GROUP
KEB Brothers Peak Formation: Chert-pebble conglomerate, sandstone, tuff, shale
 Lower to Upper Cretaceous
KT Tango Creek Formation: Chert-pebble conglomerate, micaceous sandstone, siltstone

JURASSIC TO CRETACEOUS

- Lower Cretaceous
BOWSER LAKE GROUP
IKD Devil's Claw Formation: Conglomerate, minor siltstone and shale
IKM McEvoy Formation: Shale, siltstone, sandstone, conglomerate, coal
IKC Currier Formation: Shale, siltstone, sandstone, coal, conglomerate

Middle to Upper Jurassic

- muJA** Ashman / Mount Jackson Formation: Marine shale, siltstone sandstone, chert-pebble conglomerate

JURASSIC

- Middle Jurassic
mJvs Unnamed: Volcanic flows, breccia, tuffs, sandstone, chert-pebble conglomerate
 Lower Jurassic
IJB Brock Volcanics: Porphyritic flows, breccia, tuff, tuffaceous wacke, argillite, limestone
IJS SPATSIZI GROUP: Volcanic breccia, welded tuff, tuffaceous wacke, siltstone, shale, limestone, chert-pebble conglomerate
IJC Cold Fish Volcanics: Porphyritic flows, breccia, tuff

TRIASSIC TO JURASSIC

- Upper Triassic to Lower Jurassic
TJvs Unnamed: Aphyric and porphyritic breccia, tuff, flows tuffaceous wacke, siltstone, argillite, limestone
 Upper Triassic
uTS STUHINI GROUP: Tuffaceous wacke and siltstone, basal breccia and conglomerate, aphanitic to porphyritic breccia, tuff and flows, granitic pebble and cobble conglomerate, limestone
 Middle Triassic
mTr TSAYBAHE GROUP:
 Upper Volcanic Unit: Porphyritic breccia, tuff, flows greywacke, siltstone, argillite
 Middle Sedimentary Unit: Argillite, phyllite, tuffaceous greywacke, minor chert and limestone
 Lower Volcanic Unit: Porphyritic breccia, tuff, flows Basal Sedimentary Unit: Phyllite, argillite, rare chert

CARBONIFEROUS OR OLDER

- P** Unnamed: Leucogranite, leucogranodiorite, gabbro, limestone phyllite, greenstone, chert

PLUTONIC ROCKS

JURASSIC TO TERTIARY

- JTmg** McEwan Creek Pluton: Leucogranite, rare quartz monzonite

EARLY JURASSIC

- EJqm** Rose and Edon Plutons: Quartz monzonite, porphyritic monzonite, rare syenite

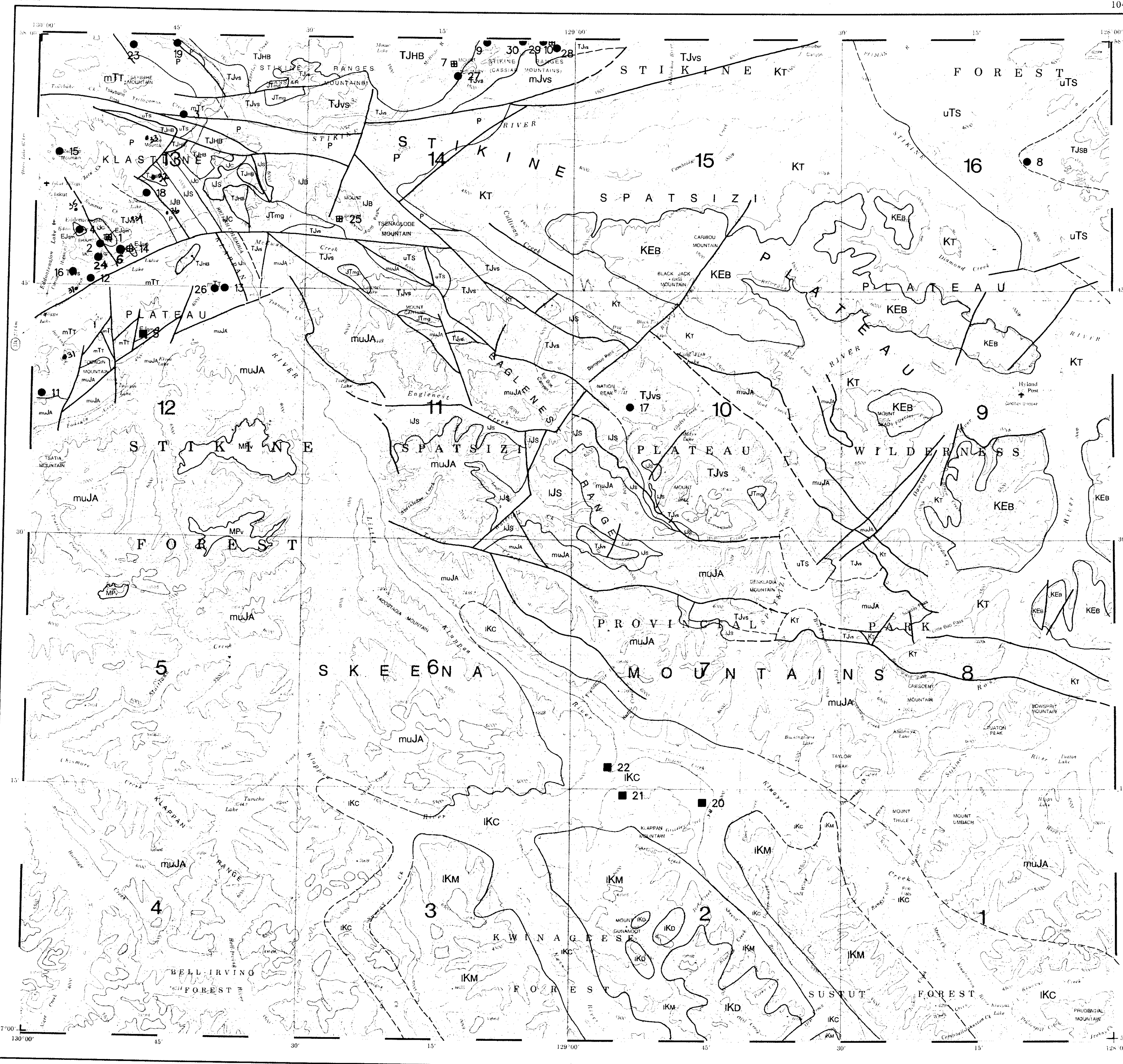
LATE TRIASSIC TO LATE JURASSIC

- TJHB** HOTAILUH BATHOLITH:
 Three Sisters Pluton: Granite, quartz monzonite, granodiorite, hornblende diorite, gabbro
 McBride River Pluton: Hornblende-biotite granodiorite or tonalite
 Beggerly Creek Pluton: Hornblende-augite meta-diorite and meta-gabbro
 Cariboo Meadows Pluton: Augite meta-gabbro, hornblende
 Railway Pluton: Biotite-augite meta-monzonite
TJSB STIKINE BATHOLITH: Granite, biotite-hornblende quartz monzonite, and monzoniorite, diorite

Geological base and legend compiled from:

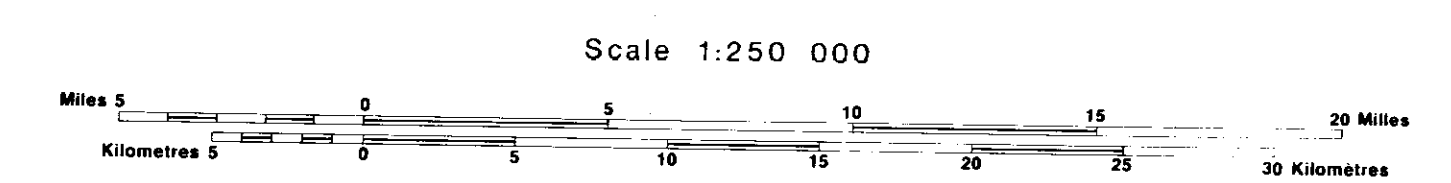
- Anderson, R.G. (1984) Late Triassic and Jurassic Magmatism along the Skeena Ash and the Geology of the Skeena Batholith, north-central British Columbia. Geological Survey of Canada, Current Research, Paper 84-1A, p. 67-73.
 Gabrielle, H. and Tipper, H.W. (1984) Bedrock Geology of the Spatsizi Map Area (104H). Geological Survey of Canada, Open File 1005.
 MacLeod, S.E. and Hill, L.V. (1990) Conformable Late Jurassic (Dufurian) to Early Cretaceous Strata of the Northern Bowser Basin, British Columbia. A Geomorphological and Paleontological Model. Canadian Journal of Earth Science, Vol. 27, p. 989-998.
 Read, P.B. (1984) Geology Klaskan River (104G/15E), Ealua Lake (104H/13W), Calk Hill (104I/4W) and Stikine Canyon (104J/1E). British Columbia. Geological Survey of Canada, Open File 1080.
 Read, P.B. and Purka, J.F. (1990) Geology of Ealua Lake East Half (104H/13W) and Cullivan Creek (104H/14) Map Areas, British Columbia. Geological Survey of Canada, Open File 2241.

104 H



104 H

Province of British Columbia
 Ministry of Energy, Mines and Petroleum Resources
MINFILE MAP 104H
SPATSIZI RIVER
 MINERAL OCCURRENCE MAP

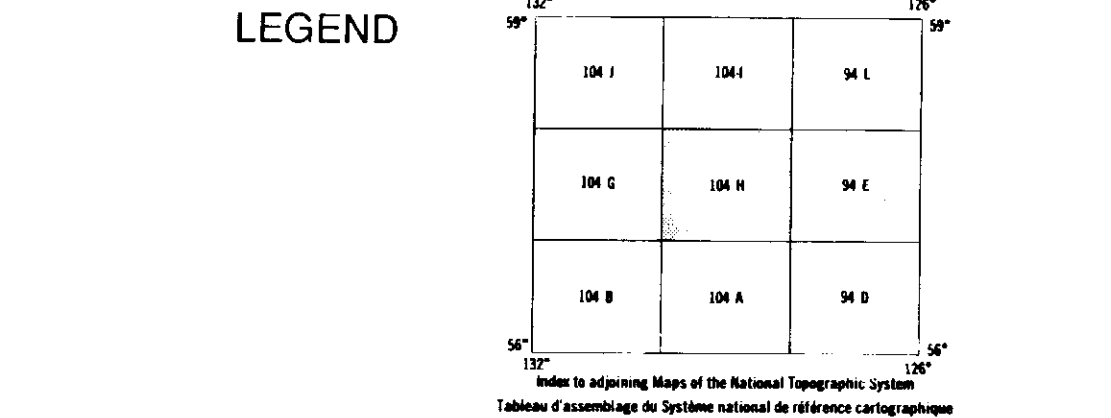


This project is a contribution to the Canada/British Columbia Mineral Development Agreement 1985-1990.

Province of British Columbia Ministry of Energy, Mines and Petroleum Resources Energy, Mines and Resources Canada Energie, Mines et Ressources Canada

DATE REVISED: JANUARY 1992 TOTAL NUMBER OF OCCURRENCES: 30
 DATE UPDATED: JULY 1992

- LEGEND
- STATUS
- ⊗ Producer
 - ⊕ Fast Producer
 - ⊖ Developed Prospect
 - ⊙ Prospect
 - Showing



MAP LEGEND 104H

MINFILE NUMBER	NAME	COMMODITIES
001	WJ WEST	CU AU AG
002	WEST	CU AU AG
003	THEOGANUS CREEK	CU
004	EDON	CU AU NO
005	SOUTH	CU AU NO ZN MO
006	RED-CHRIS	CU AU NO AG
007	PAT	CU AG NO
008	LIME	CU
009	JOY 57	CU AU AG
010	JOY 56	CU
011	RAM	NO
012	COYTE	NO
013	BOMAZA	NO CU AU PB ZN MO
014	BT	CU
015	KITTY	CU
016	NO	CU
017	NATION PEAK	BA PB
018	KLASTINE PLATEAU	LS
019	STIKINE RIVER Limestone	LS
020	MOUNT KLAPPAN (HOBBIT-BROATCH)	CL
021	MOUNT KLAPPAN (LOST-FORK)	CL
022	MOUNT KLAPPAN (SUMMIT)	CL
023	TSAYBAHE MOUNTAIN	LS
024	COYTE 3	CU
025	BRDCK	CU AU AG
026	LEODADO	CU AU PB ZN MO
027	PAT 4	CU AG
028	SEC 5	CU
029	GD 47	CU
030	GD 7	CU
031	GAN	CU, NI, AG, PB, ZN, AS, HG, SB

COMMODITY LEGEND

CODE	COMMODITY	COMMODITY	CODE
AG	Silver	Barite	BA
AU	Gold	Coal	CU
BA	Barite	Copper	CU
CL	Coal	Gold	AU
CU	Copper	Lead	PB
LS	Limestone	Limestone	LS
MO	Molybdenum	Notoliteium	NO
PB	Lead	Silver	AG
ZN	Zinc	Zinc	ZN

032	BIB	CU AU AG
033	RAILWAY	CU
034	PLATEAU	CU
035	MADON	CU AU
036	B31	CU
037	D1	CU AU AG

This MINFILE release researched and compiled by J.L. Gravel