



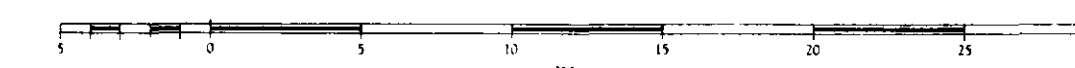
Province of British Columbia
Ministry of Energy, Mines and Petroleum Resources

MINFILE MAP 104N

ATLIN

MINERAL OCCURRENCE MAP

Scale 1:250 000



This project is a contribution to the Canada/British Columbia Mineral Development Agreement 1985-1990.



Province of British Columbia

Ministry of Energy, Mines and Petroleum Resources



Energy, Mines and Resources Canada

Energie, Mines et Ressources Canada

DATE REVISED: DECEMBER 1988
DATE UPDATED: DECEMBER 1991

TOTAL NUMBER OF OCCURRENCES: 133
: 134

LEGEND

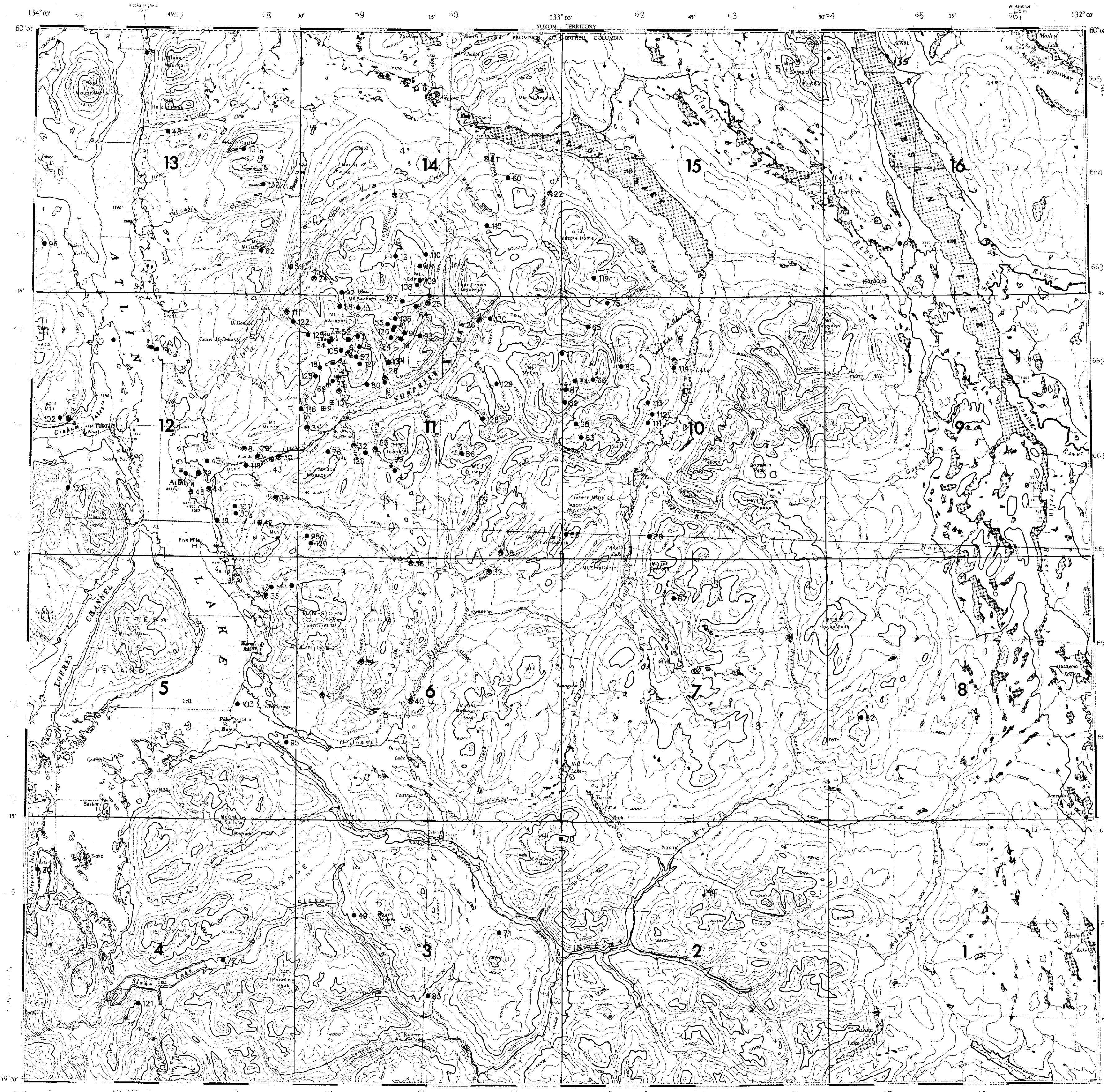
STATUS

- ★ Producer
- Past Producer
- Developed Prospect
- Prospect
- Showing

INDEX

Y	U	K	O	N
104M				104O
USA	104K			104J

MINFILE NUMBER	NAME	COMMODITY(S)	MINFILE NUMBER	NAME	COMMODITY(S)
104N001	MUSSELBEE	Ur, Th, Fl, Pb, Mo	076	SURPRISE	Pb, Cu
002	ISLAND MOLY	Mo	077	RU SILVER	Ag
003	DUMDIE	Pb, Cu	078	BOOT	Cu, Ag, Pb, Zn, Sn, Mo, Fl
004	PETTY	Pb, Cu, Ag	079	ATLIN	Hm
005	PURPLE ROSE	Ur, Cu, Ag, Pb, Th, Fl	080	GOLD 218A	Au
006	BLACK DIAMOND	Mo, Au, Cu, Mo, Fl, Ur	081	ATLIN ROAD	Mt, Ls
007	BEAVIS	Au, Ag	082	HURRICANE CREEK	Mt, Ls
008	IMPERIAL	Au, Ag, Cu, Pb	083	SLOKO RIVER	Mt
009	LAKEVIEW	Au, Ag, Pb	084	FISHER	Ur, Cu, Mo
010	WHITE STAR	Au, Pb, Ag	085	SNOWBIRD	Ur, Pb
011	ATLIN RUFFNER	Au, Pb, Au, Zn, Cu, Mo, Cd	086	DIXIE	Ur, Cu, Fl, As
012	SUNRISE	Cu, Pb, Zn	087	CY 4	Ur, Zn, Pb
013	MOUNT BARIHAN	Ni, Cu	088	IRA 5	Ur, Fl
014	NORSK	Mo	089	CY 6	Zn, Fe, Fl, Pb
015	THOR	Mo, Ag, Mo, Pb	090	PATO 2	Mo, Cu, Zn
016	PEREYE TUNGSTEN	Mo, Cu	091	GOLD STAR	Au, Ag
017	WEIR MOUNTAIN	Mo, Mo	092	VOL	Ur
018	BIRCH CREEK TUNGSTEN	Mo	093	WMC	Ur
019	ATIKEN GOLD	Au	094	NAKINA RIVER	Ls
020	LLEVELLYN INLET	Cu, Ag, Au	095	O'DONNELL	Mt, Ls
021	DAVENPORT CREEK	Au	096	SHAKER	Ls
022	CHEHALIS CREEK	Au	097	TESLIN LAKE	Ls
023	CONSOLATION CREEK	Au	098	SHUSAN	Au, Ag, Pb, Zn
024	VOLCANIC CREEK	Au	099	EAGLE CREEK	Au, Cr
025	CRACKER CREEK	Au	100	GV	Au
026	HORSE CREEK	Au	101	ANNA	Au, Ag, Cr
027	BOULDER CREEK	Au, Mo, Sn	102	GRAHAM INLET	Mt
028	RUBY CREEK	Au, Pb, Gs	103	PIKE	Mt
029	WILLOW CREEK	Au	104	MCKEE CREEK	Mt
030	PINE CREEK	Au	105	RUBY MOUNTAIN	Mt
031	BIRCH CREEK	Au	106	PATO 1	Ur, Cu, As
032	OTTER CREEK	Au	107	MISTAKE	Ag, Ur, Au, Pb
033	WRIGHT CREEK	Au	108	D & D	Ur
034	SPRUCE CREEK	Au	109	IRA 6	Ur
035	MCKEE CREEK	Au	110	IRA	Ur
036	FEATHER CREEK	Au	111	CX 2	Ur
037	BULL CREEK	Au	112	MIR 7	Ur, Cu, Pb, Zn, Ag
038	FOX CREEK	Au	113	MIR 3	Ag, Pb, Zn, Ur, Th
039	SLATE CREEK	Au	114	CX	Ur
040	O'DONNELL RIVER	Au	115	TUPA	Ur
041	BURDETTE CREEK	Au	116	CABIN SILVER	Ag, Pb, Zn, Au
042	GOLDEN VIEW	Au, Cu, Mo, Ag	117	MARVEY	Pb, Cu
043	YELLOW JACKET	Au, Mt	118	UTOPIA	Pb, Zn, Cr
044	PICTOU (L.5643)	Au, Ag, Pb, Zn, Mt	119	KRAM 11	Sn, Cu, Zn, Fe
045	RELIEF	Au, Ag, Mt	120	G-1	Cu, Zn
046	ANACONDA	Au, Ag, Mt	121	SLOKO COAL	Cl
047	EAGLE	Ag	122	RUFF	Ag, Au, Mo, Zn, Pb, Cu
048	MACDONALD	Cu	123	OMEGA	Cu, Mo, Pb, Zn
049	COP	Cu, Ab, Au, Ag	124	PEREYE ASBESTOS	Ab
050	MONARCH MOUNTAIN	Ab	125	LITTLE EDNA	Cu, Au, Ag
051	HOBO 1	Mo, Ag, Pb, Mo	126	ATLIN MAGNETITE	Fe, Cu
052	ADANAC	Mo, Fl, Mo	127	RUBY MOUNTAIN	Pb
053	SOUTH	Mo, Au, Mo, Cu, Pb, Sn	128	QUARTZ CREEK	Cu, Pb, Zn, Mo, Fl
054	NORTH	Mo	129	B & B	Pb
055	PUB	Ab	130	GRANITE CREEK	Mo, Pb
056	FAR	Cu	131	MOUNT CARTER	Mo, Cu
057	DAM	Ag, Zn, Au, Pb, Cu, Mo	132	PET	Mo
058	VOLCANIC CREEK MOLY	Mo, Cu	133	TAGISH COAL	Cl
059	STEAMBOAT MOUNTAIN	Mo	134	DAYBREAK	Sn, Pt, Be, W
060	GLADYS LAKE MOLY	Mo, Cu	135	Teslin Lake	Cu
061	RU	Ur			
062	SUN	Mo, Pb, Cu			
063	ENG 2	Pb, Zn, Ag			
064	PIT	Cu			
065	WHI 357	Mo			
066	CANDY	Mo, Mo, Pb, Be, Fl, Cu			
067	HI	Mo, Cu, Pb, Zn			
068	ENG 3	Zn, Pb, Fe, Sn			
069	SILVER DIAMOND	Sn, Mo, Ag, Zn, Cu, Fl, Pb, Mo			
070	CHIKOIDA MOUNTAIN	Ab			
071	FOCUS MOUNTAIN	Cu			
072	SLOKO LAKE	Au			
073	SUNBEAM	Au			
074	NORTHEAST	Zn, Pb, Fe			
075	KRAMS 14	Sn			



Topographic base map produced by SURVEYS AND MAPPING BRANCH, ENERGY, MINES AND RESOURCES CANADA.