

# **Charting the Course**

## **BC Offshore**

### **Atlantic Experience**

### **Environmental Assessment and Monitoring**

**Kathy Penney, Jacques Whitford**  
**September 21, 2004**



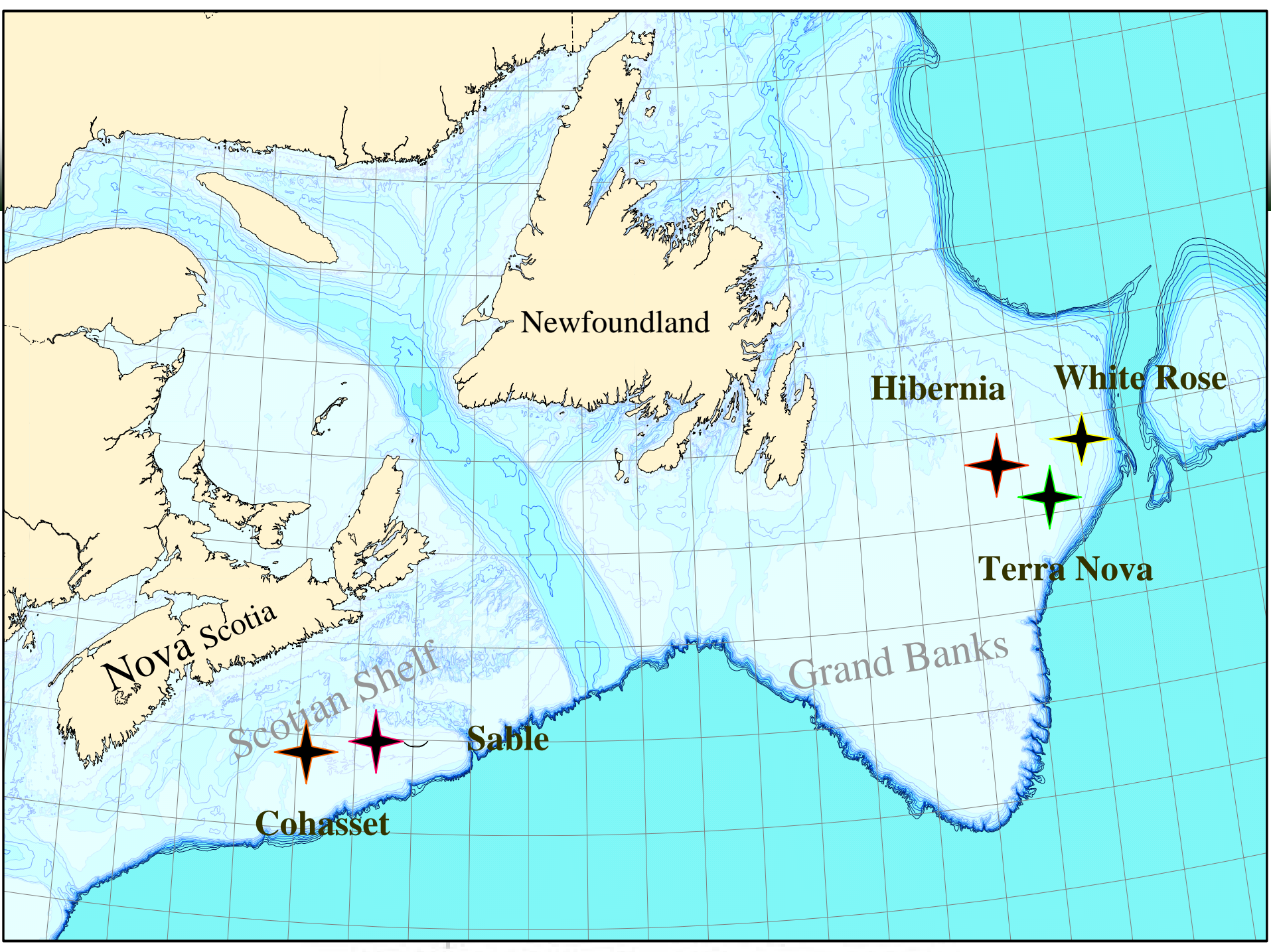
# Grand Banks



# Atlantic Experience

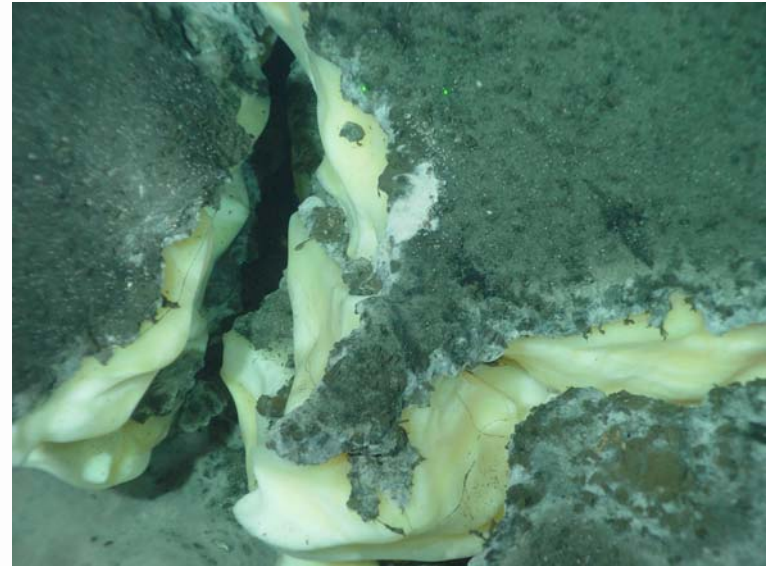
- **Regulatory Regime**
- **Public Consultation**
- **Environmental Effects Monitoring**





# Regulatory Regime

- **No current BC offshore regulatory regime**
- **Atlantic Canada – separate joint Federal Provincial agency established through Atlantic Accords**
- **Environmental Assessment required before any phase of activity**
- **Environmental Inspections and Compliance monitoring mandatory**
- **All accidental spills reported**



# Regulatory Regime

- **Four Levels of Environmental Assessment Anticipated**
  - **Strategic Environmental Assessment**
  - **Seismic Activity: Screening Level Assessment**
  - **Exploration Drilling: Comprehensive Study**
  - **Development: Public Panel Hearings**
- **All involve public consultation**



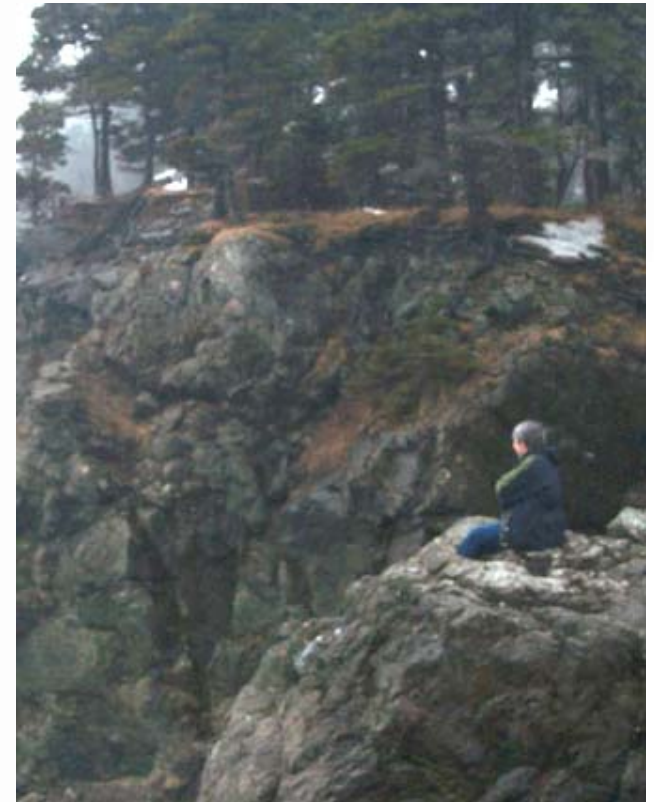
# Strategic Environmental Assessment

- Done prior to opening up a new Basin for Seismic or Exploration Activities
- Laurentian or Orphan basins
- Regional-scale considerations
- Identify interaction, gaps in information and stakeholder issues
- Public is consulted



# Development/Operations

- Full review of all aspects of development plan, including environmental, socio-economic, safety, design, reservoir plan, emergency response planning, etc.
- Permitting required by federal legislation, including habitat loss, ocean dumping, navigable waters
- Operations: Permitting, Compensation for access and Gear loss, compliance requirements, Environmental Effects Monitoring





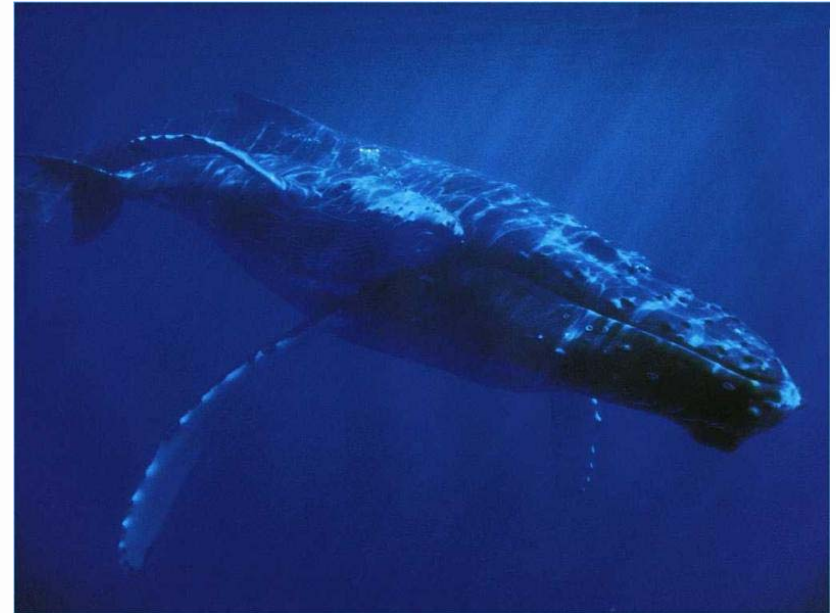
# Public Consultation

- Required at every step of assessment
- Public Information Sessions
- Key stakeholder interviews
- Public Panel hearings
- Intervenor funding available



# Monitoring

- **Environmental Effects Monitoring**
  - **Assess the status of the marine environment**
  - **Detect changes in this status**
  - **Early feedback to Operations**
  - **Mandatory reporting**
  - **Complimented by Public research (ESRF, PERD, DFO, others)**



# Monitoring

- **Baseline data collected required prior to beginning of development drilling or construction**
- **Required to carry out EEM surveys each year for 3 years**
- **Frequency thereafter typically every two to three years**
- **Frequency increased if unpredicted effects detected**



# Summary

- **History of strong offshore environmental regulation in Atlantic Canada**
- **Provides “gates” at each step of offshore development to ensure impacts are detected & addressed before or when they occur**
- **Public Consultation at every stage**
- **Environmental Effects Monitoring**
  - **Mandatory**
  - **No adverse significant effects**



**Vancouver**

**4370 Dominion Street, 5th Floor**

**Burnaby, BC V5G 4L7**

**Phone: (604) 436-3014**

**Fax: (604) 436-3752**

**Duncan**

**715 Canada Ave**

**Duncan, BC V9L 2R1**

**Phone: (250) 715-2999**

**Fax: (250) 715-2992**

