

BRITISH COLUMBIA
PROSPECTORS ASSISTANCE PROGRAM
MINISTRY OF ENERGY AND MINES
GEOLOGICAL SURVEY BRANCH

PROGRAM YEAR: 1996/1997

REPORT #: PAP 96-20

NAME: PETER GOODMAN

**BRITISH COLUMBIA
PROSPECTORS ASSISTANCE PROGRAM
PROSPECTING REPORT FORM (continued)**

B. TECHNICAL REPORT

- * One technical report to be completed for each project area
- * Refer to Program Requirements/Regulations, section 15, 16 and 17
- * If work was performed on claims a copy of the applicable assessment report may be submitted in lieu of the supporting data (see section 16) required with this TECHNICAL REPORT

Name PETER GOODMAN Reference Number 96/97 P 4I

LOCATION/COMMODITIES

Project Area (as listed in Part A.) _____ Minfile No. if applicable _____

Location of Project Area NTS 92H7/6 Lat 49 27 Long 121 00

Description of Location and Access Claims are located on Jim Kelly Creek and Toulameen River. Access via logging road 29 kms from Coquihalla Toll Booth

Main Commodities Searched For AU PT

Known Mineral Occurrences in Project Area Area has a history of mineralization. AU and PT occur on Jim Kelly Creek

WORK PERFORMED

1. Conventional Prospecting (area) 8 claims and surrounding area
2. Geological Mapping (hectares/scale) _____
3. Geochemical (type and no. of samples) 5 rock samples 22 black sand samples
4. Geophysical (type and line km) _____
5. Physical Work (type and amount) Test pits / Hand work on creek and river
6. Drilling (no. holes, size, depth in m, total m) _____
7. Other (specify) OMNITRON 900 Molecular Frequency Discriminator 5 areas (see maps)

SIGNIFICANT RESULTS (if any)

Commodities AU PT Claim Name ZOWIE I

Location (show on map) Lat _____ Long _____ Elevation _____

Best assay/sample type .008 AU .006 PT Placer
Quartz 48.3 gt AU 56.5 gt AG

Description of mineralization, host rocks, anomalies _____

Two quartz veins discovered off claim block contain varying amounts of AU AG CU and PT. Black sand examples were obtained from gravel deposits.

Supporting data must be submitted with this TECHNICAL REPORT.

WORK PROGRAM / RESULTS

PROGRAM COMMENCED: May 15th
PROGRAM TERMINATED: September 29th

OBJECTIVES: To find paying quantities of AU/PT

NOTE: During the off season last year a 40 lb. sample of wet black sands was submitted to an assay lab back east. These sands came from a pit on the Toulameen River measuring 10' long, 4.5' wide and 2.5 ' deep. From these sands 13 oz. PT and 3 oz. AU were recovered. All visible AU was removed prior to these sands being sent for assay.

PROGRAM: This years program consisted of FOUR main parts.

- 1) To follow up on the results obtained from the black sands (see note above)
- 2) To follow up on the results of last years program
- 3) To follow up on the quartz veins located last year
- 4) Further exploration on Jim Kelly CR. and The Toulameen River

Over 800 man hours were expended on the above program.

Phase 1 consisted of:

(a) Six pits being hand dug on gravel bars on the Toulameen River and the mouth of Jim Kelly CR.

These pits measured 4'-6' in length, 3'-4' in width, and 4'-5' in depth. Water was encountered in all holes at approx. 3'.

Large rocks were removed and material screened to 1". Six muck buckets (600 - 700 lbs.) from each pit were then run over a double deck vibrating sluice. The cons were then checked for visible gold, cut and rolled and a 1 lb. sample sent for assay.

Assay Results

Sample	#	AU	PT
JK	1	.001	.001
JK	10	.0016	.002
JK	18	.0009	.001
JK	17	.003	.002
TR	1	.003	.004
TR	1A	14.60 gms ton	NIL

b) Three pits were dug on the banks of the Toulameen River using a backhoe. These pits were approx. 7'-8' in length, 3' wide and 6'-8' deep.

Samples were obtained by screening material to 1" and running 6 muck buckets (600-700 lbs.) over a double deck vibrating sluice, with the cons being checked for color and a 1 lb. representative sample being sent for assay.

Assay Results

Sample	#	AU	PT
TR	2	.001	.002
TR	3	.003	.004
TR	6	.002	.004

Phase Two

Four pits were dug by using a backhoe. The pits measured 8'-10' in length, 5'-6' in width, and 4'-5' in depth. All holes encountered clay at bottom. Material from hole was divided into two piles, top 2' and bottom 2'-3'. Material was screened to 1" and then 6 muck buckets were run over a doubled deck vibrating sluice, the cons checked for colors and a 1 lb. representative sample sent for assay.

Assay Results

	Sample	#	AU	PT
Pit #1	JK	2	.001	.002
	JK	4	.001	.002
Pit #2	JK	8	.001	NIL
	JK	9	.003	.004
Pit #3	JK	11	.0011	.002
	JK	12	.002	.003
Pit #4	JK	13	.0009	.001
	JK	14	.008	.006

Phase Three

Follow up sampling of two quartz veins located last year gave the following results. Two chip samples of approx. 10 lbs. each were crushed to 1"-2", divided and sent out to two labs for assay.

Sample #	JK 6	returned	.004 AU	.005 PT	.0024 AG
	JK 7	returned	.003 AU	.003 PT	.0016 AG

These samples were sent to Toronto for assay.

Sample #	JK 6A	returned	48.3 gt AU	56.5 gt AG	9
	JK 7A	returned	31.9 gt AU	38.10 gt AG	

These samples were sent to Vancouver and showed no PT.

A grab sample taken last year and assayed in Toronto returned 1 gm each of AU/PT per kilo.

It is noteworthy that while the samples sent back east showed PT, the samples done in Vancouver did not.

Phase Four

Panning and mossing took place at various locations on the Toulameen River and Jim Kelly Creek (see map). Mossing on Jim Kelly proved mixed with the lower part of the creek proving more productive than the upper part. In fact testing on the upper part of the creek revealed very little in AU.

In some testing black sands were collected and sent out for assay - results follow.

Sample	#	AU	PT
JK	15	.0025	Nil
JK	16	.006	.003
TR	4	.001	.001
TR	5	.002	.0025

Mossing on Jim Kelly gave 7 pans with over 30 colors per pan and 10-15 pans with 20-30 colors.

In addition to the above work, several areas of the property were examined using an OMNITRON 900 (MOLECULAR FREQUENCY DISCRIMINATOR) as well as a RADIONIC GEOLOGICAL PROSPECTING INSTRUMENT.

An auger was used in an attempt to get below the clay encountered in the pits. The small amount of gravel recovered from this hole contained 4 small colors.

Conclusion:

In some respects this was a disappointing year. The severe flooding in the area last fall changed the course of the river and the creek. Areas that showed promise last year were in some cases now under water and in some cases completely gone.

On the plus side, testing revealed areas that show considerable promise.

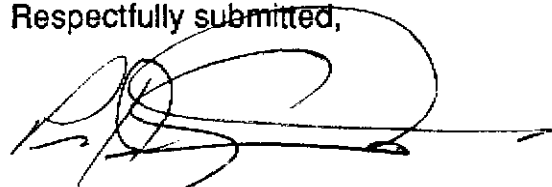
The best news is that results from both instruments used and from the auger show that in three areas the values appear to be on bedrock below the clay. A large excavator will be brought in next season to get below the clay and test bedrock.

Also on the plus side is that in spite of all reports we have seen on PT occurrences, that PT occurs only from Champion Creek down river, the PT nuggets obtained last year from Jim Kelly Creek bear further exploration. Geologists and Old Timers in the area say they have not seen any the size of the ones found.

Again, the use of the aforementioned instruments have outlined an area of interest that must be explored next year.

In respect of the quartz veins discovered last year and as a result of assays received this year, a bulk sample of 500 lbs. has been brought out and we are now trying to find somewhere to send some for testing.

Respectfully submitted,

A handwritten signature in black ink, appearing to be 'Peter Goodman', written over a horizontal line.

Peter Goodman

2950 Boys Road
RR #6
Duncan, BC V9L 4T8
1-250-416-0092

RANGE

SUNNY 111
317740
P81727

SUNNY 113
325591
P81806

SUNNY 112
320854
P81750

ZOWIE 2
320853
P81748

ADAM 11
18PC24
P65067

ADAM 1
18PC23
P65066

TRAD IV
311022
P70845

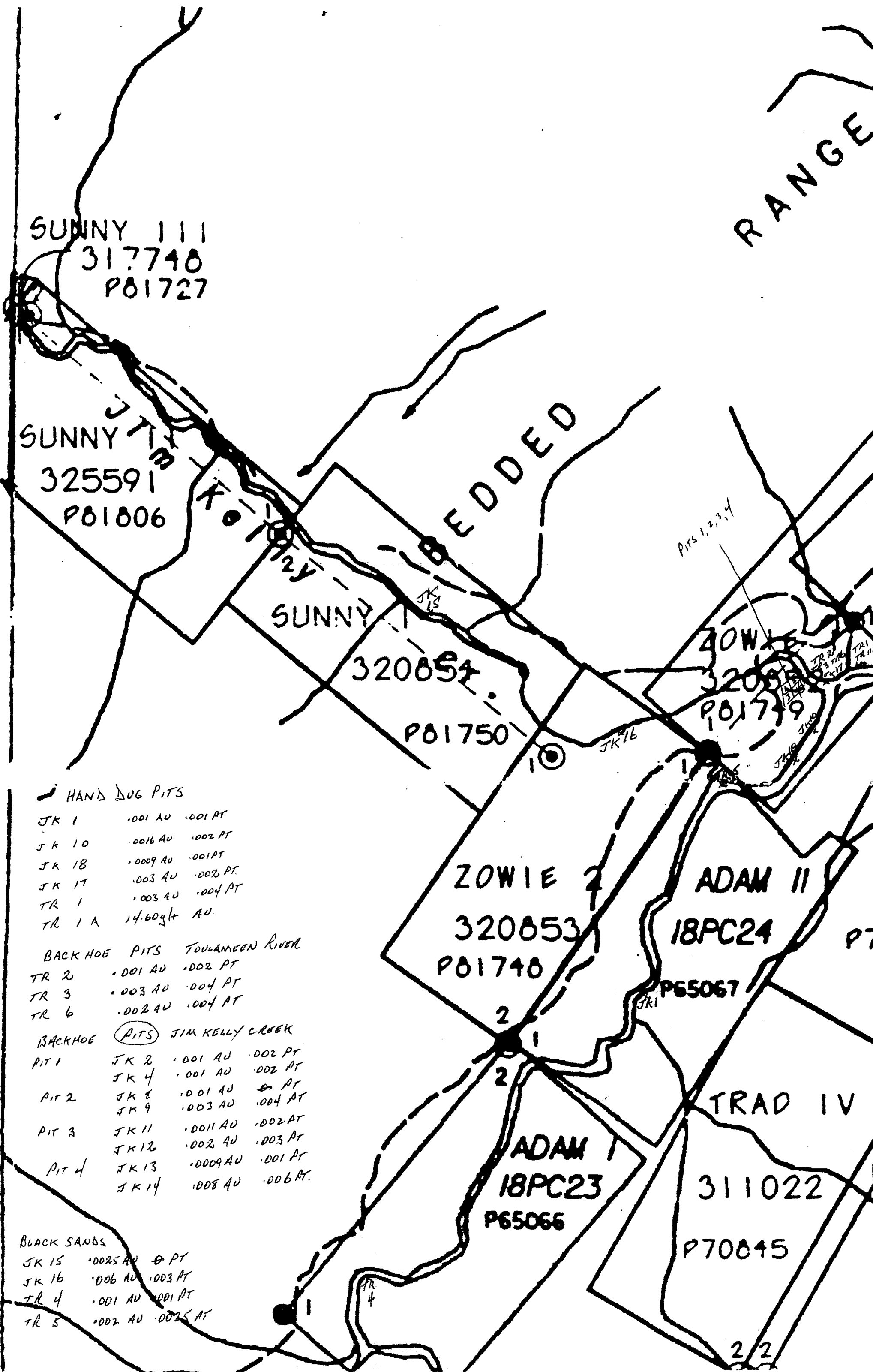
HAND DUG PITS

JK 1	.001 AU	.001 PT
JK 10	.0016 AU	.002 PT
JK 18	.0009 AU	.001 PT
JK 17	.003 AU	.002 PT
TR 1	.003 AU	.004 PT
TR 1 A	14.60g/4 AU.	

BACKHOE PITS	TOULAMBEEN RIVER	
TR 2	.001 AU	.002 PT
TR 3	.003 AU	.004 PT
TR 6	.002 AU	.004 PT

BACKHOE PITS	JIM KELLY CREEK	
PIT 1	JK 2	.001 AU .002 PT
	JK 4	.001 AU .002 PT
PIT 2	JK 8	.001 AU .001 PT
	JK 9	.003 AU .004 PT
PIT 3	JK 11	.001 AU .002 PT
	JK 12	.002 AU .003 PT
PIT 4	JK 13	.0009 AU .001 PT
	JK 14	.008 AU .006 PT

BLACK SANDS		
JK 15	.0025 AU	.001 PT
JK 16	.006 AU	.003 PT
TR 4	.001 AU	.001 PT
TR 5	.002 AU	.0025 PT



RANGE

SUNNY III
317748
P81727

SUNNY I
325591
P81806

SUNNY I
320854
P81750

ZOWIE I
320854
P81749

ZOWIE 2
320853
P81748

ADAM II
18PC24
P65067

ADAM I
18PC23
P65066

TRAD IV
311022
P70845

AREAS COVERED BY
USING OMNITRON 900



AREAS THAT GIVE STRONG
AD/PT READINGS



96-20
①

EQUIPMENT

MF 300 LOADER C/W BACKHOE ATTACHMENT

WASH PLANT

FLYING DUTCHMAN DOUBLE DECK VIBRATING SLUICE

HIGHBANKER

CONC. WHEEL.

1" 2" 3" PUMPS

5000 KW GENERATOR

PORTABLE WELDER/GENSET 12 HP KUBOTA

OMNITRON 900 MOLECULAR FREQUENCY DISCRIMINATOR

RAIDONIC GEOLOGICAL PROSPECTING + ANALYZING INSTRUMENT

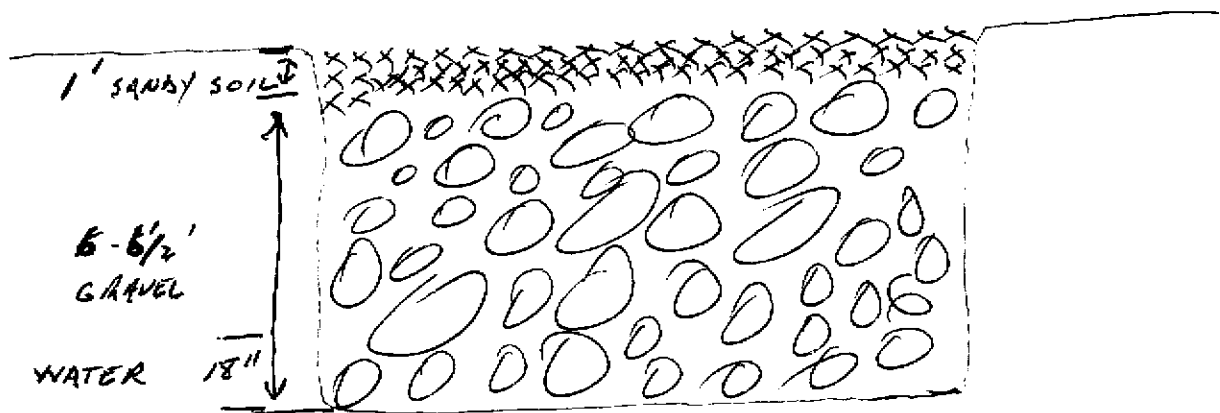
4x4 3/4 TON GMC.

PROFILE PITS DUG USING BACKHOE

TOULAMEEN RIVER

SIZE 7-8' X 3' X 6-8'

AREA WORKED WAS OUTSIDE 10 M. LIMIT FROM THE TOULAMEEN RIVER. GROUND WAS SANDY + SPARSLY COVERED WITH SCRUB BRUSH AND WILLOWS



PROFILE

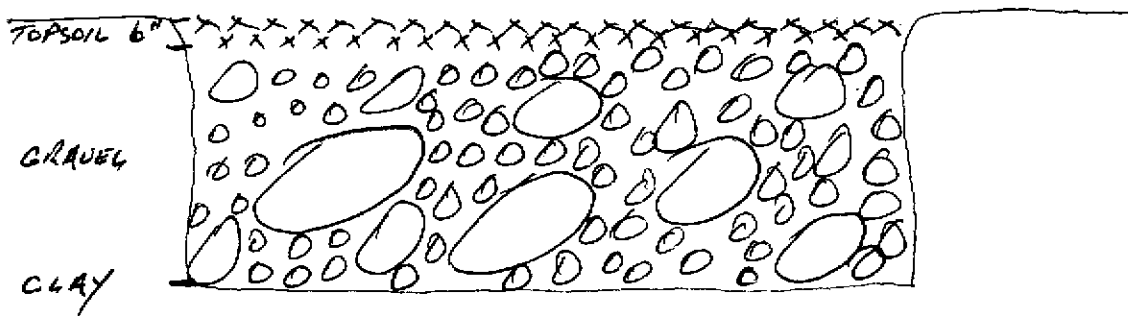
PITS DUG USING BACKHOE

JIM KELLY CREEK

SIZE 8x10' L 5-6' W 4-5' DEPTH. FOUR PITS

FOLLOW UP TO LAST YEARS TEST
AREA WAS LOGGED WITH DEERFALL.

TOPSOIL IS MINIMAL. SOME VERY LARGE BOULDERS
CLAY WAS ENCOUNTERED @ 4-5' + EQUIPMENT ON
HANDS COULD NOT PENETRATE SAME.



PITS DUG BY HANDS

SIZE 4-6' L 3-4' W 4-5' DEEP
ALL PIT WERE DUG ON BARS + WERE TYPICAL
GRAVEL PITS. LARGE ROCKS - NO OVERTURBLEN.
WATER ENCOUNTERED AT APPROX. 3' DEPTH



MF 300 BACKHOE / LOADER



FLYING DUTCHMAN.

CAMP SITE 1995



SAME CAMP SITE 1996



PHASE TWO AREA PRIOR TO EXCAVATION



PANNING TOULAMSEN RIVER



TYPICAL GRAVEL BAR
WHERE HAWK'S BUG NETS TOOK PLACE

ADDENDUM:

1. FILM OF PITS DUG WAS TAKEN TO COSTCO FOR DEVELOPMENT.
PICTURES RETURNED WERE THOSE OF SOME UNKNOWN PERSON WATER SKIING.
TO DATE OUR PICTURES HAVE NOT TURNED UP.
2. PHASE TWO ASSAYS:
IN EACH CASE THE FIRST ASSAY IS THAT OF THE UPPER TWO FEET.
3. ALL ASSAYS ARE A PERCENTAGE EXCEPT WHERE NOTED.
4. LOSSING:
AN RECOVERED FROM LOSSING JIM KELLY CREEK WAS 2.31 o.j.
5. RENTALS APPLIES ONLY TO WORKER/BACKHOE
6. ASSAYS WERE REC'D BY PHONE & ASSAY SHEETS HAVE NOT BEEN REC'D TO DATE.