

BRITISH COLUMBIA
PROSPECTORS ASSISTANCE PROGRAM
MINISTRY OF ENERGY AND MINES
GEOLOGICAL SURVEY BRANCH

PROGRAM YEAR: 1997/1998

REPORT #: PAP 97-21

NAME: DANIEL ETHIER

Kuldo

drive north on Kuldo rd to 5495 odo,
gps of location in blk 19; 5 681 25; 62 031 29. Elev 1430 ft.
end of road is 1 km further north.
Mainly glacial till, some seds in o/c minor carbonates.

97 KUL 111 stream seds, just before blk 19.

Km 53 = 5497 odo, returning
Camp 5 687 28; 61 998 28. Elev 1730 6-7 sat

JULY 31, 1997

97 KUL 112

stream sed. 5 688 43; 61 994 22. Gps
3m wide creek, nothing to interest me in float train. Minor qtz with chlorite,
nothing in pan. After 50 km.

At 49km o/c seds, coal seam dirty carbonaceous shale, 0.5 to 1m wide, exposed
25m sub horizontal ? dipping west.

Basic seds. change to band of carbonates in seds, in kuldo burn ~ 48 km.
Kul 112, at change different gps 5 697 11; 61 950 80. 1770ft.

97 KUL 113

stream sediment near 114.

97 KUL 114,

97 KUL 115.

GPS 5 692 76; 61 945 22. 1530ft, watch 1420ft
Both samples are float rock in road cut, calcite-qtz flooding in seds - sst (coarse)
lots of limonite. Limestone?

Damsumlo Main and Kuldo Main junction.

ODO 506.75 km

Road cut has carbonates in seds, some fractures, minor limonite.

Gps 5 690 64; 61 942 97. Elev W 1460 ft.

ODO 507.1 = 44 KM board.

97 KUL 116

stream sed. Gps 5 684 47; 61 937 43.

97 KUL 117

stream sed off main road gps 5 678 12; 61 923 81

lots of rusty carbonate, limestone. Gps 5 678 80; 61 921 30.

Geological Survey Branch
MEI

JAN 15 1998

f 24

Junction Kuldo North branch gps 5 680 70; 61 892 60
Travel to 5 669; 61 903, 1420 ft
O/c seds no action.

38 km Kuldo creek.

very good fishing hole, 50m long 20m wide as creek comes out of narrows
below bridge. Gps 5 676 35; 61 887 65.

- just off main road, 7/8 to 1" cable minor rust (possible interest to Sam)
broken spool gps 5 638 81; 61 856 65, 820 ft.

97 KUL 118

stream sed. Gps 5 637 49; 61 852 23. 1520 ft
panned –nothing.

July 30/ 97

45 km on Kispiox main to 0 km on Kuldo main freq 158.280
0 km Kuldo gps 9 5 699 70; U 61 581 27 1100 ft, saved as 007 scoutmaster.
0 km Kuldo = 5411 odometer.
11 km Cranberry to "R"?
27 km Deep canoe creek
freq switch to 157.71 (Suskwa channel 6)
38 km Kuldo cr
42 – 43 km carbonate gossans,

odo 5456, Damsumlo Main
Damsumlo Main 7 km, odo 5463 km construction in progress – end of road.
Talc seams, seds with minor qtz. Meet Bob the Blaster there.
Utm 5 710 47; 61 979 96
50 m below gps above small stream.

97 DAM 101

stream sed (small)

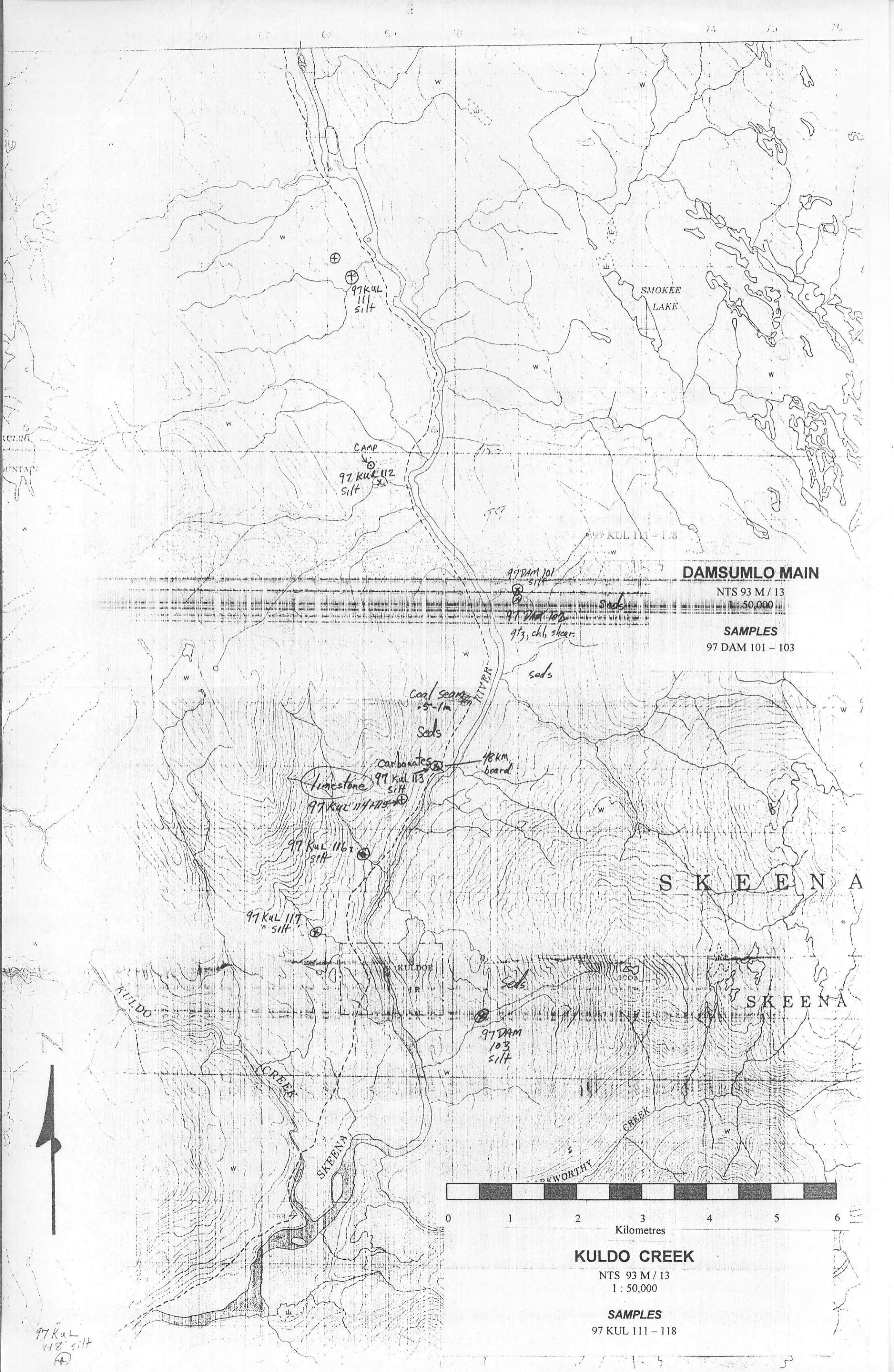
97 DAM 102

rx from road cut, seds fractured filled with qtz.
Minor pyr-chlorite, evidence of shear

93 M 13 - nts

97 DAM 103

stream sed, lake view logging road, 2 km from Skeena bridge, 4 km up road
gps 5 705 14; 61 909 12



DAMSUMLO MAIN

NTS 93 M / 13
1 : 50,000

SAMPLES
97 DAM 101 - 103

S K E E N A

S K E E N A



Kilometres

KULDO CREEK

NTS 93 M / 13
1 : 50,000

SAMPLES
97 KUL 111 - 118

97KUL 111
silt

CAMP
97 KUL 112
silt

97 DAM 101
silt

97 DAM 102
973, chl, shear.

Coal seams
0.5-1m

Carbonates
97 KUL 113
silt

Limestone
97 KUL 114 + 115

97 KUL 116
silt

97 KUL 117
w silt

KULDO
CR

97 DAM
103
silt

97 KUL
118 silt

CARRIGAN

Drive out south to Carrigan creek road. Gps 668 E; 630 N.
10 km bridge across Carrigan creek, little further note float.

97 CAR 120

stream sediment. Gps 5 756 59; 61 676 93. W 1900 ft, 2030 ft.

97 CAR 121

float in creek. 8" round principally a chunk of calcite with qtz edge. Qtz contains 10% pyrite
possible As, Sb. Chalcopyrite ID in blebs in qtz

97 CAR 122

float, dark rhyolite phenocrysts of calcite. Possible altered feldspar? Flow banding? Very fine
grained disseminated mineral pyr?

97 CAR 123

qtz with chlorite? Light green some diss pyr.

97 CAR 124

hornfels showing alteration along hairline fractures, diss pyr.

97 CAR 125

BFP float, biotite to chlorite. 10% hematite.

120 -- 125 samples are all from the same place.

If I remember correctly, this stream is maybe 3-400 meters from the carrigan cr bridge, it is in the
carrigan cr erodin basin. I have the impression this float train is traceable possibly to the known
showing on top of the hill. However a drainage is between them, check.

Continue down the Carrigan cr rd. to the Skeena junction with the Blackstock cr. camp beside
Blackstock cr. UTM 9 5 793 18; U 61 691 41. Elev Watch 900 ft should be 1020 tft gps
says 1130 ft saved as 008, in Trimble ScoutMaster.

1997 Friday August 1,

Quad 6 km north of camp, logging roads in burn have confused old road, cannot find it –
overgrown. 813 – 743; 815 – 750; 816 – 744; 805E – 746N.

97 CAR 126

stream sed.
GPS 5 805 83; 61 724 18. Elev. 940 ft.

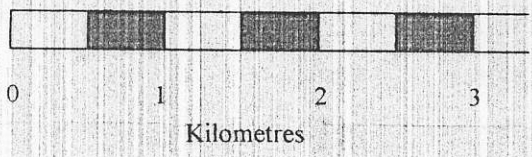
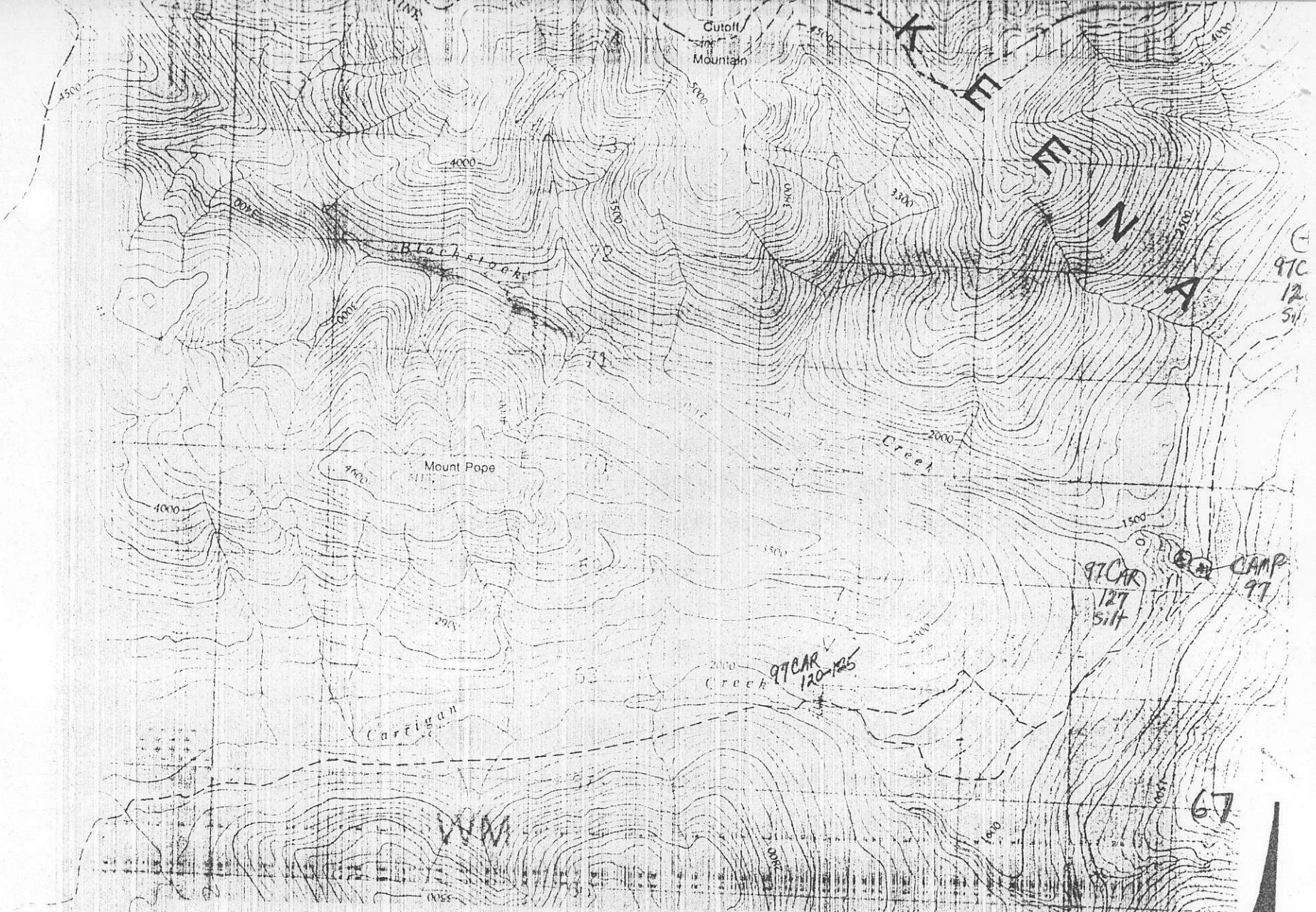
97 CAR 127

stream sediment.
Near Blackstock Cr. camp, upstream on cr.

Geological Survey Branch
MEI

JAN 15 1998

P54



CARRIGAN CREEK

NTS 93 M / 12
1 : 50,000

SAMPLES
97 CAR 120 - 127



July 24 /97

Nischeskwa

Chris and Dan.

01 Geo slick and slide on sst – conglomerate contact. FAULT 350' 78' NE
UTM quick –roadside some limonite-carbonate
9 6 403 10***6 61 496 75 elev 2520-2590 ft.

100 m up –see ryholite in ditch, erratic?
4056 rd calcite carbonate staining, seds – andesite.

97 NIC 101

soil – silt, end of road, main
6 372 64 E ; 61 531 02 096 N ; 1050 m elev. 371.86; 530.68

pan at nic 101, concentrates show magnetite, pyr,pb, cpy?,
not significant amounts.

97 NIC 102

below 101 100m from end of road, cr. NE stream sed
6 371 13 E ; 61 531 97. 3310 ft

andesite, sst, conglom, granodiorite.
200m from end of road andesite o/c – carbonate staining.

97 NIC 103

stream sed 6 333 58 ; 61 515 08. Pan null

back to junction 456 & 457 roads, down 457 to end, 9km.
6 384 63 ; 61 556 78. 2820 ft

97 NIC 104

str sed, 7 km 457 rd 6 396 82 ; 61 537 25.

97 NIC 105

str sed

97 NIC 106

pan con

97 NIC 107

rx, qtz, pyr, cpy.

Creek 6 ft wide 1 ft deep.

GPS NIC 105 – 107 6 398 85 ; 61 534 06 2730 ft

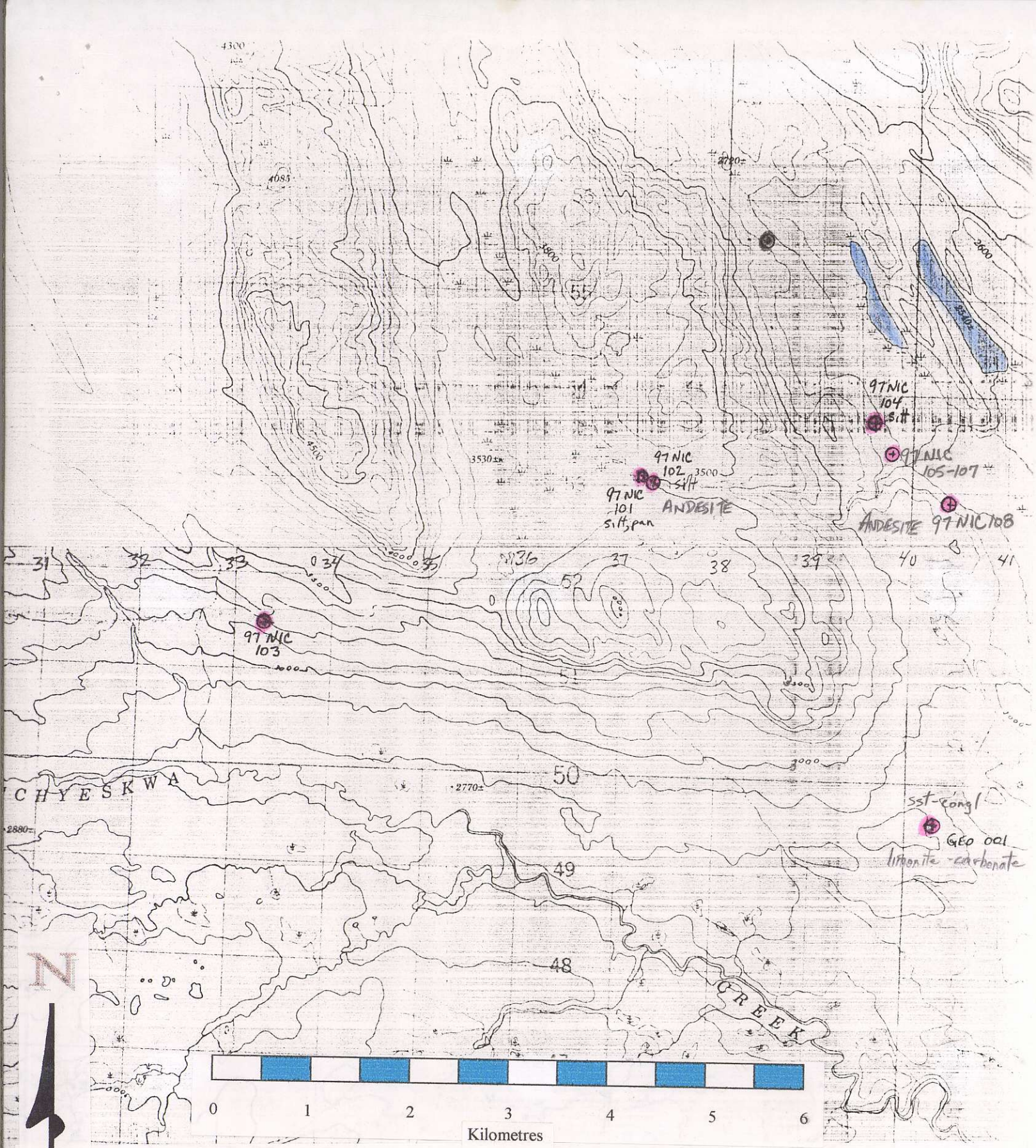
97 NIC 108

o/c andesite brown, BFP? Blue white stain Zn?
11m further down road to o/c.
gps poor geometry
6 404 88 ; 61 529 51
6 km + 100 m

Geological Survey Branch
MEI

JAN 15 1998

104



NICHYESKWA CREEK

NTS 93 M / 7, 10 W
1: 50,000

SAMPLES
97 NIC 101 - 108