



GeoFile 2012-04

Using Regionated KML Files to Display the Status of a Large Number of Mineral Occurrences in British Columbia

Yao Cui

British Columbia Geological Survey
Ministry of Energy and Mines

Suggested Citation:

Cui, Y. (2012): Using Regionated KML files to display the status of a large number of mineral occurrences in British Columbia; *British Columbia Ministry of Energy and Mines*, GeoFile 2012-04, <http://www.empr.gov.bc.ca/Mining/Geoscience/PublicationsCatalogue/GeoFiles/Pages/2012-04.aspx>, [Accessed: year, month, day].

Contents

- This document
- MINFILE status as regionated KML files in *GF2012-04.zip* 2,945 KB
- <http://webmap.em.gov.bc.ca/mapplace/kml/minfile/status/doc.kml>
(Note: add this URL to Google Earth® as a Network Link)

Description

Regionated KML files have been created to provide a lightweight and quick display of over 12,500 mineral occurrences on Google Earth®. An application has been developed to extract the data from the MINFILE database and style the occurrences based on their status (Figure 1). The regionation technique allows the display of only a small number of higher scored sites (e.g., producing mines with higher mined quantity) while zoomed out (or viewing the sites at a higher altitude on Google Earth®). When zoomed in or viewing an area at a lower altitude, lower scored sites (Prospect and Showing) start to appear as well. Instead of a single KML file containing 12,500 points, the package consists of thousands of small KML files with file sizes 18 KB or less. At a given viewing altitude, only

a small number of KML files are fetched and displayed on Google Earth®, which significantly improves the performance of displaying. Further performance gain is achieved through minimal packaging of essential data in the KML files with a link (View Details) on the balloon to detailed report available on the MINFILE website (Figure 2).

To display the regionated KML files on Google Earth®, unzip *GF2012-04.zip* and open *doc.kml* in folder *MINFILE_status_kml*. Alternatively, a network link can be added to Google Earth®, with a link to <http://webmap.em.gov.bc.ca/mapplace/kml/minfile/status/doc.kml>.

MINFILE Status



Figure 1. Legend of MINFILE status.

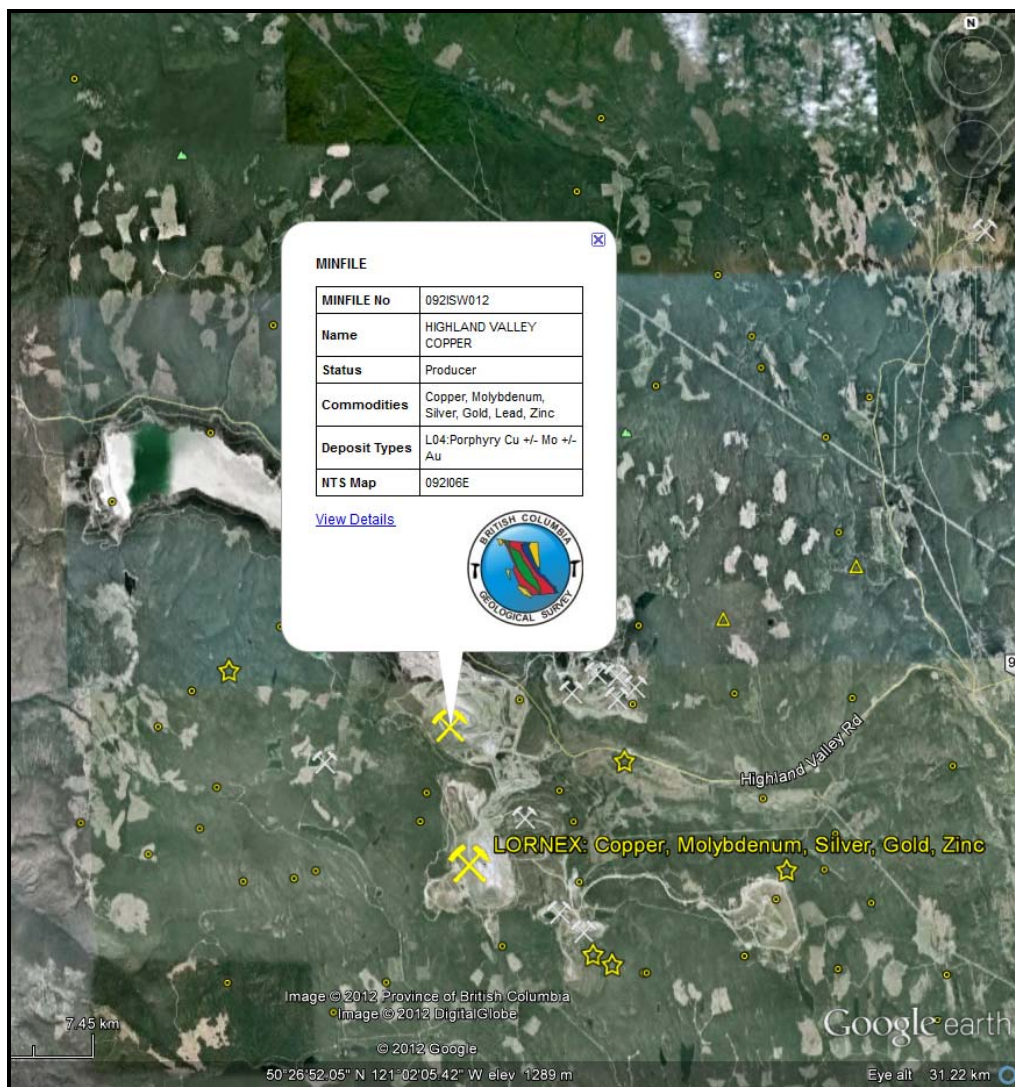


Figure 2. Screenshot of mineral occurrences displayed on Google Earth®.