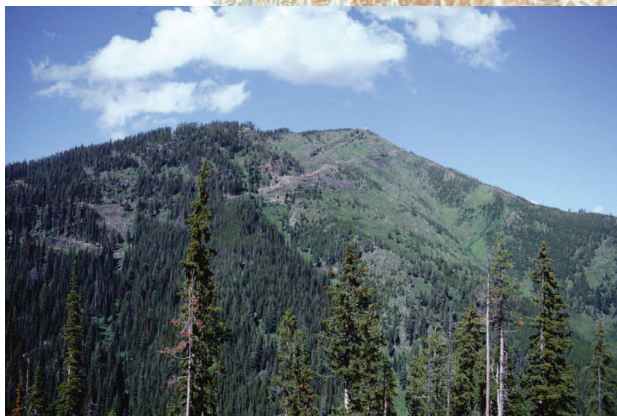


The Dominion Coal Block

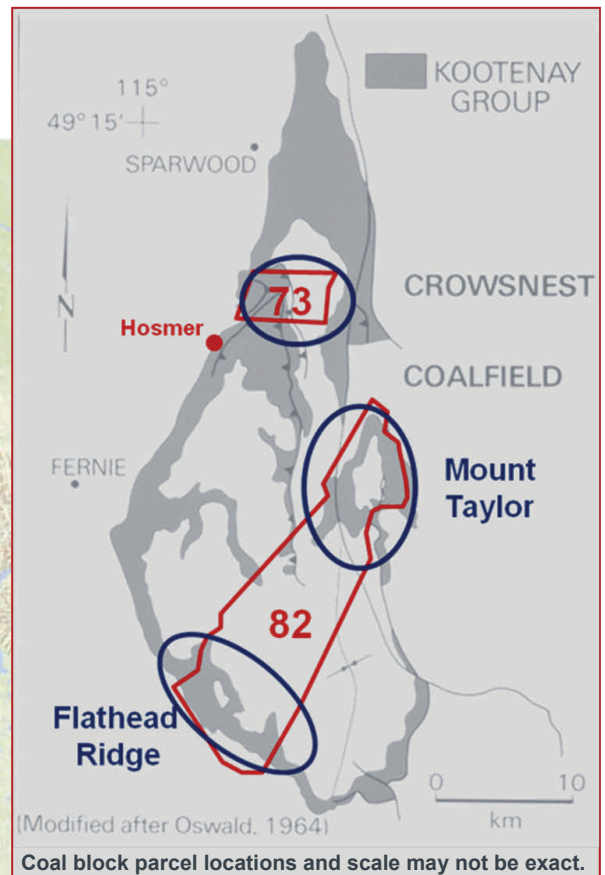
The Government of Canada announced on August 30, 2013 that it is “considering an open competitive sale of the Dominion Coal Blocks in the Kootenay region of British Columbia”. This sale would open up coal lands for development for the first time since 1905.

The Dominion Coal Block consists of 2 parcels of freehold land (including land ownership and subsurface rights) that were granted in the late 1890s by British Columbia to the railway, as part of a construction land grant.

Ownership of the parcels (73 & 82) was subsequently transferred to the Government of Canada in 1905.

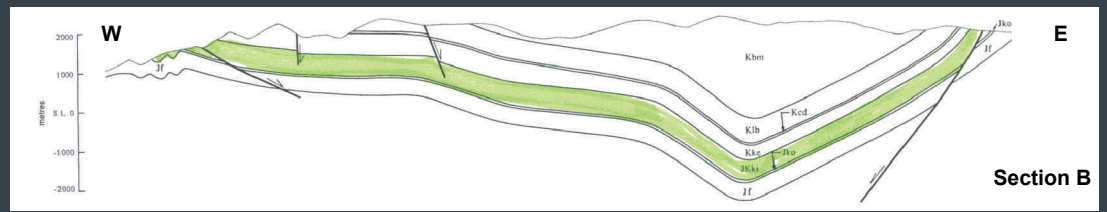
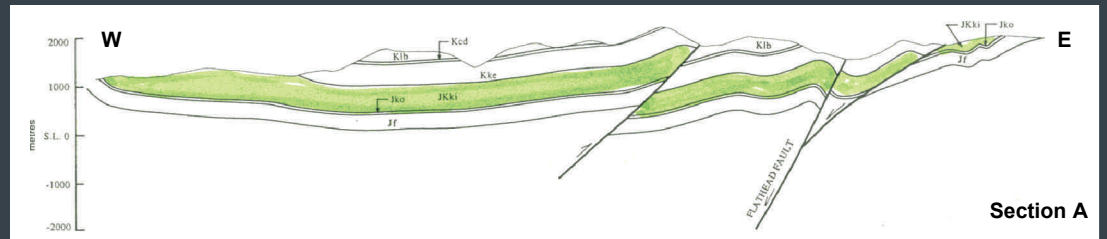
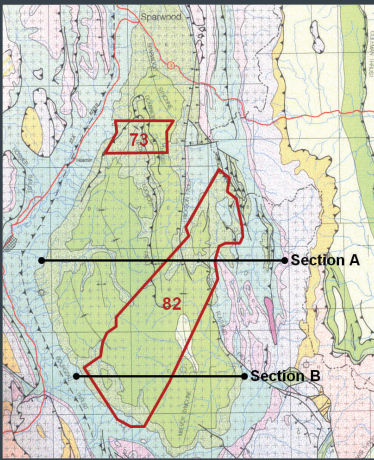


View of Lookout Hill from the east-southeast, in the centre of Parcel 73.

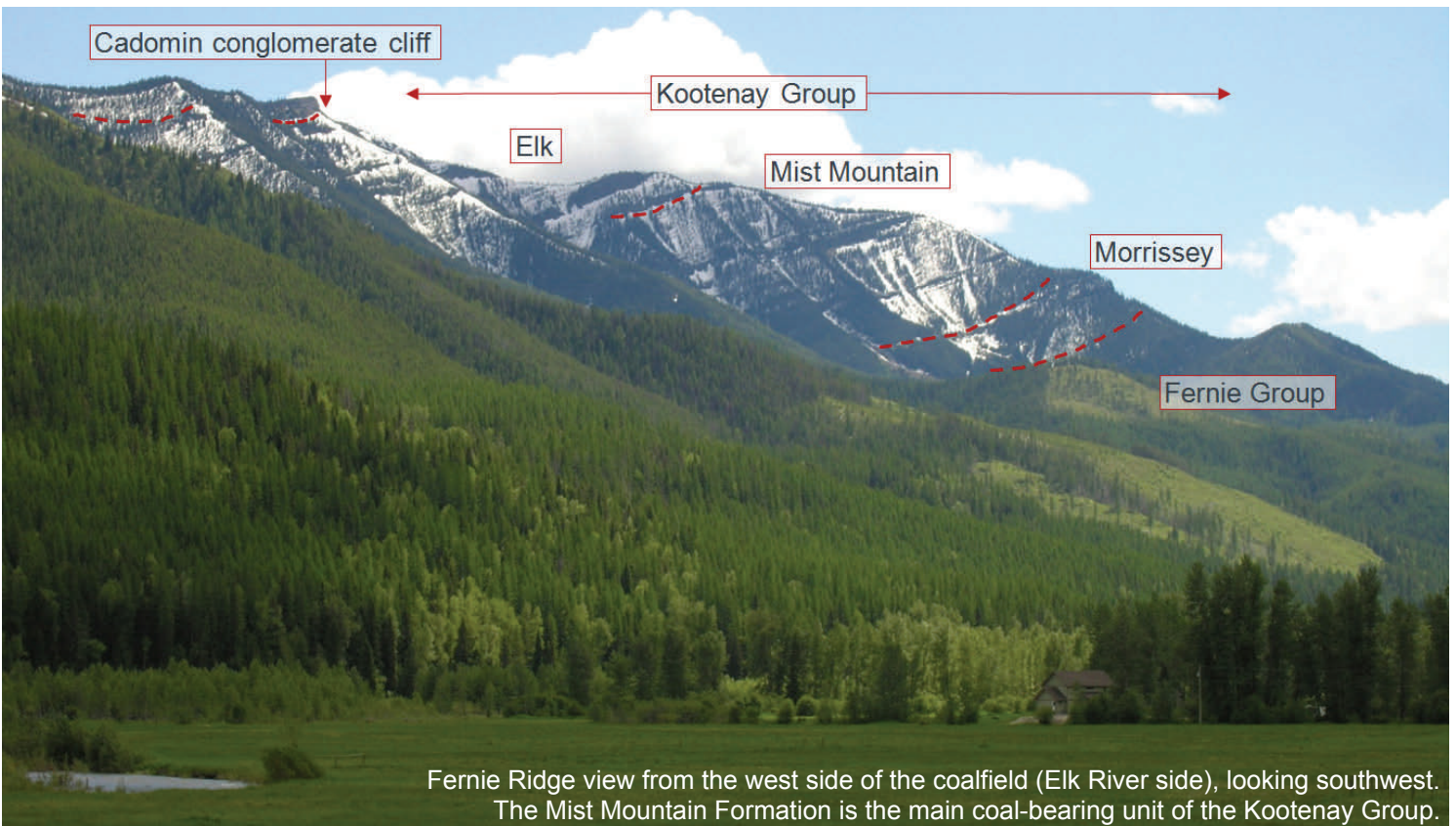


	Size	Mineral Coal <i>in situ</i>	Mineral Coal Measured	CBG
Parcel 73	2,023.5 ha	76 mt		0.65 tcf
Parcel 82 Mt. Taylor		613 mt		
Parcel 82 Flathead Ridge	18,211.5 ha	230 mt	17.5 mt	5.92 tcf
TOTAL	20,235 ha			

Resource assessments from Grieve and Kilby (1989)
BC Ministry of Energy & Mines Paper 1989-4 and Dawson et. al (1998):
Maps 1, 2 and 3 of Coalbed methane resource assessment of the
Dominion coal blocks; Geological Survey of Canada, Open File 3549.



Regional geology of the Crows Nest coalfield and location of the Dominion Coal Block. The cross sections show the structure of the Fernie Basin. In green is the Kootenay Group (Jurassic to Cretaceous), the coal-bearing unit.



Fernie Ridge view from the west side of the coalfield (Elk River side), looking southwest. The Mist Mountain Formation is the main coal-bearing unit of the Kootenay Group.

Additional information on the geology and coal exploration history of the Dominion Coal Blocks:
<http://www.empr.gov.bc.ca/Mining/Geoscience/Coal/Documents/DominionCoalBlockReferenceList.pdf>

Full announcement from the Government of Canada, and contacts:
<http://www.nrcan.gc.ca/media-room/news-release/2013/11416>

This sheet is for information purposes only and should not be relied upon for formal evaluations of coal resources or mining potential.