



The Golden Triangle of northwestern British Columbia



Ministry of
Energy, Mines and
Low Carbon Innovation

Information Circular 2023-05



Stikinia (Stikine terrane), home to the Golden Triangle

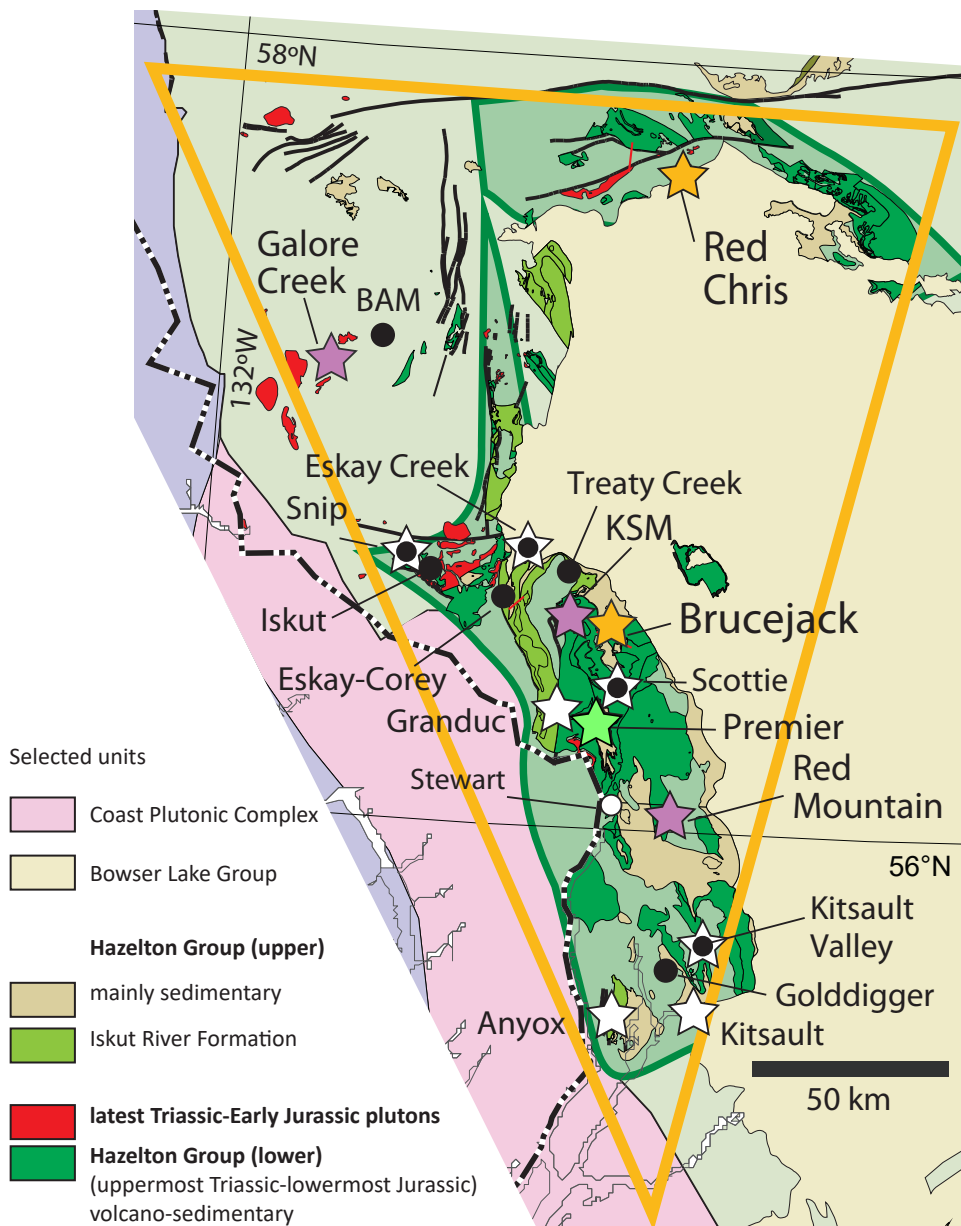
Stikinia is a long-lived oceanic arc terrane that extends for about 1000 km along the length of the Canadian Cordillera. Mineral deposits developed during

- accretion of terranes to the western margin of ancestral North America
- post-accretion deformation and magmatism



The Golden Triangle is the popular name for a loosely defined region that includes most of the major gold, silver, and copper deposits in west-central Stikinia.

- ★ current mine
- ★ mine under construction; proposed mine
- ☆ significant past-producing mine
- ☆● significant past-producing mine with new exploration
- selected exploration project



Most deposits in the Golden Triangle are related to the Hazelton Group and affiliated intrusions.



Enhanced infrastructure is encouraging exploration



Past and current operating mines

More than 150 mines have operated since prospectors first arrived at end of the 19th century. Past-producing mines include Granduc, Eskay Creek, Anyox, Kitsault, Premier/Dilworth, Dolly Varden, and Snip. Exploration continues at Eskay Creek, Premier/Dilworth, Dolly Varden (Kitsault Valley), Snip, and Scottie Gold mine.

Red Chris mine

(Newcrest Mining Limited 70%, Imperial Metals Corporation 30%)

- alkalic porphyry copper-gold
- Open pit¹
 - Proven + Probable reserves: 75 Mt 0.45% Cu, 0.39 g/t Au
 - Measured + Indicated resources: 342.9 Mt 0.36% Cu, 0.30 g/t Au
 - Inferred resource: 12.1 Mt 0.30% Cu, 0.25 g/t Au
- Underground¹
 - Proven + Probable reserves: 410 Mt 0.45% Cu, 0.55 g/t Au
 - Measured + Indicated resources: 957 Mt 0.40% Cu, 0.46 g/t Au
 - Inferred resource: 257 Mt 0.30% Cu, 0.32 g/t Au
- 2022 production: 67.6 Mlb Cu, 63,700 oz Au, 190,573 oz Ag²

Brucejack mine

(Newcrest Mining Limited)

- epithermal gold-silver
- Proven + Probable reserves³
 - 14.4 Mt 8.3 g/t Au, 63.8 g/t Ag
- Measured + Indicated resources³
 - 22.5 Mt 10.0 g/t Au, 67.5 g/t Ag
- Inferred resource³
 - 9.4 Mt 10.3 g/t Au, 44.3 g/t Ag
- 2022 production⁴
 - 250,357 oz Au, 370,587 oz Ag

¹Newcrest Mining Limited, annual report 2022; ²Imperial Metals Corporation, news release January 24, 2023; ³Pretium Resource Inc, Brucejack mine mineral reserves and mineral resources, March 2021, ⁴Newcrest Mining Limited quarterly report, December 31, 2022.



Mine construction and proposed mines

Premier Gold (Ascot Resources Ltd.)

- under construction; \$200 M financing, early 2024 production target, eight-year life of mine
- epithermal gold-silver
- Proven + Probable reserves¹
3.63 Mt 5.45 g/t Au, 19.11 g/t Ag
- Indicated resource: 4.14 Mt 8.01 g/t Au, 35.1 g/t Ag¹
- Inferred resource: 5.06 Mt 7.25 g/t Au, 28.7 g/t Ag¹

KSM (Seabridge Gold Inc.)

- calc-alkaline porphyry Au-Cu-Ag-Mo
- Proven + Probable reserves²
2.198 Bt 0.55 g/t Au, 0.21% Cu, 2.6 g/t Ag, 42.6 g/t Mo
- Measured + Indicated resources²
3.59 Bt 0.49 g/t Au, 0.19% Cu, 2.7 g/t Ag, 53.0 g/t Mo
- Inferred resource²
5.40 Bt 0.36 g/t Au, 0.29% Cu, 2.2 g/t Ag, 31 g/t Mo

Galore Creek (Galore Creek Mining Corporation)

- alkalic porphyry copper-gold
- Measured + Indicated resources³
1.104 Bt 0.47% Cu, 0.26 g/t Au, 3.7 g/t Ag
- Inferred resource³
198 Mt 0.27% Cu, 0.21 g/t Au, 2.7 g/t Ag

Red Mountain (Ascot Resources Ltd.)

- vein, breccia, and stockwork gold-silver
- Proven + Probable reserves²
2.54 Mt 6.52 g/t Au, 20.60 g/t Ag
- Measured + Indicated resources²
3.19 Mt 7.63 g/t Au, 21.02 g/t Ag
- Inferred resource²
0.41 Mt 5.32 g/t Au, 7.33 g/t Ag

¹Ascot Resources Limited, Premier & Red Mountain gold project feasibility study NI 43-101 filed May 22, 2020; ²Seabridge Gold Inc. KSM NI 43-101 technical report August 8, 2022; ³Teck Resources Limited, 2020 annual information form, February 17, 2021.



Selected 2022 exploration project updates

Kitsault Valley (Dolly Varden Silver Corporation)

- volcanogenic massive sulphide and epithermal silver-lead-zinc (past producer)
- Homestake Ridge¹
Indicated resource
0.736 Mt 7.02 g/t Au, 74.8 g/t Ag
Inferred resource
5.545 Mt 4.58 g/t Au, 100 g/t Ag
- Dolly Varden²
Indicated resource
3.42 Mt 299.8 g/t Ag
Inferred resource
1.285 Mt 277.0 g/t Ag
- 37,100 m diamond drilling in 2022

Eskay Creek (Skeena Resources Limited)

- volcanogenic massive sulphide Au-Ag-Zn-Pb (past producer)
- Proven + Probable reserves
29.9 Mt 2.99 g/t Au, 79 g/t Ag
- Measured + Indicated resources
46.5 Mt 2.6 g/t Au, 63.2 g/t Ag³
- Inferred resource
3.42 Mt 1.3 g/t Au, 20.2 g/t Ag
- 55,700 m diamond drilling in 2022

Eskay-Corey (Eskay Mining Corp.)

- marine volcanic Au, Ag, Zn, Cu, Pb
- 29,500 m diamond drilling in 2022

¹Dolly Varden Silver Corporation, NI 43-101 technical report and updated mineral resource estimate for the Homestake Ridge gold project, January 20, 2022;
²Dolly Varden Silver Corporation, NI 43-101 technical report and mineral resource update for the Dolly Varden property, May 2019; ³Skeena Resources Limited, Eskay Creek project NI 43-101 Technical Report and Feasibility Study, Sept 6, 2022

SNIP (Hochschild Mining PLC under option from Skeena Resources Limited)

- intrusion-related vein Au
- Indicated resource: 2.50 Mt 10.4 g/t Au
- Inferred resource: 2.184 Mt 10.3 g/t Au
- 10,400 m diamond drilling in 2022

Treaty Creek (60% Tudor Gold Corp, 20% Teuton Resources Corp., 20% American Creek Resources Ltd.)

- alkalic porphyry Cu-Au and epithermal Au-Ag-Cu
- Measured + Indicated resources
815.7 Mt at 0.66 g/t Au, 3.6 g/t Ag, 0.06% Cu¹
- Inferred resource
311.7 Mt 0.72 g/t Au, 4.0 g/t Ag, 0.05% Cu¹
- 43,300 m diamond drilling in 2022

Scottie Gold Mine (Scottie Resources Corp.)

- intrusion-related vein Au
- 17,200 m diamond drilling in 2022

Golddigger (Goliath Resources Limited)

- polymetallic veins Au, Cu, Pb, Zn
- 26,300 m diamond drilling in 2022

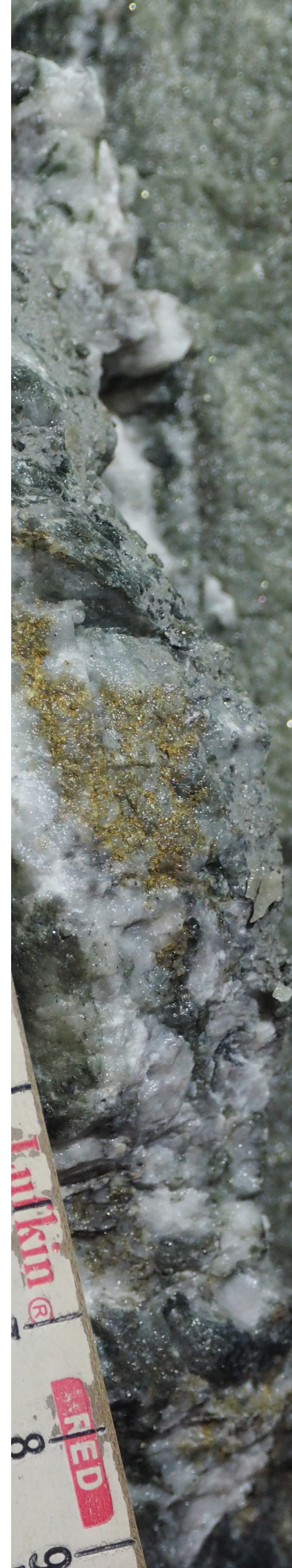
BAM (P2 Gold Inc.)

- epithermal Au-Ag-Cu
- 14,000 m diamond drilling in 2022

Iskut (Seabridge Gold Inc.)

- porphyry copper-gold
- 10,600 m of diamond drilling in 2022

¹Tudor Gold Corp. technical report and initial mineral resource estimate of the Treaty Creek gold property, NI 43-101 filed April 26, 2021.





Ministry of
Energy, Mines and
Low Carbon Innovation



www.BCGeologicalSurvey.ca