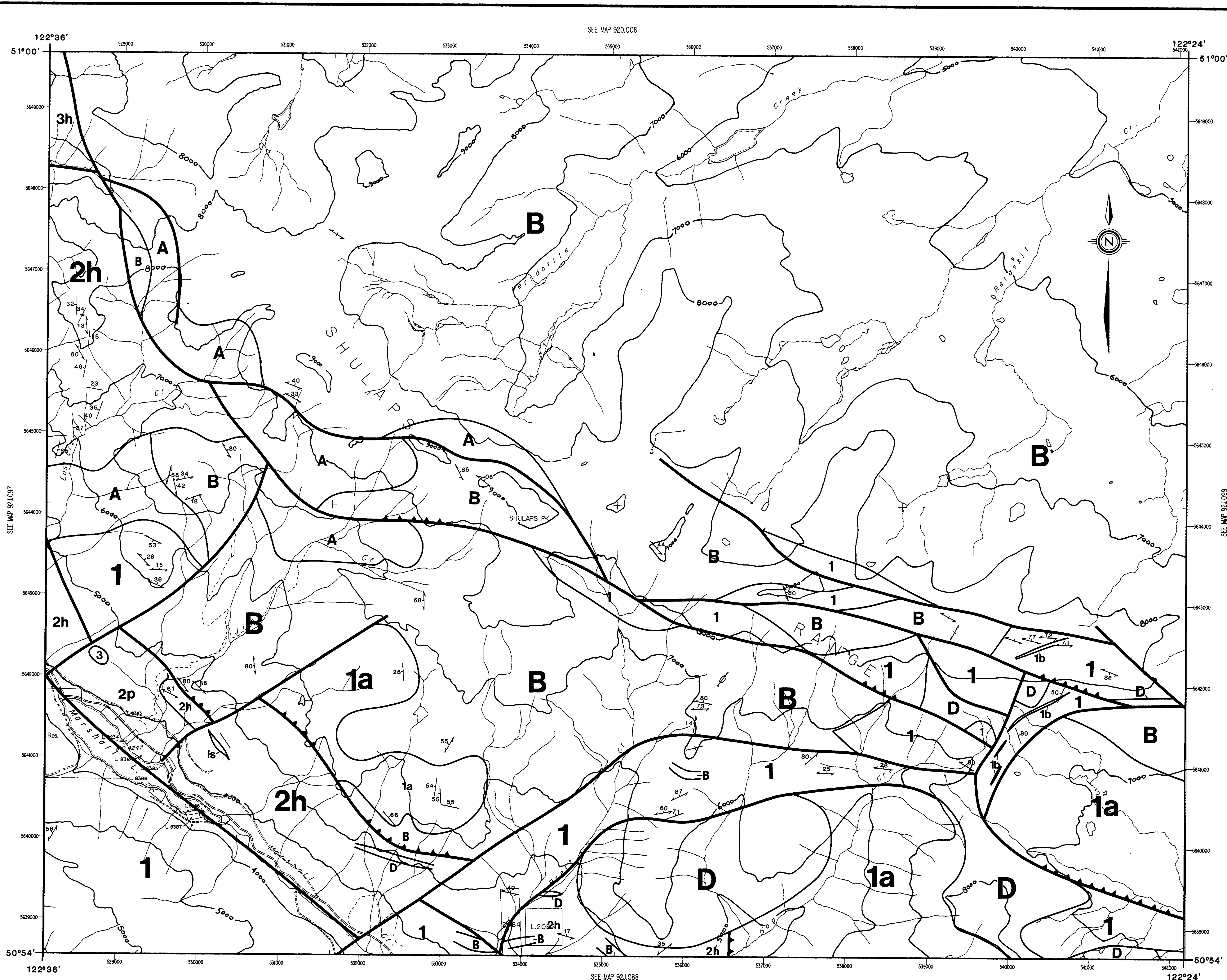


08-13  
0'E



Province of British Columbia  
Ministry of Energy, Mines and Petroleum Resources

OPEN FILE MAP 1988 - 17  
**GEOLOGY OF THE MARSHALL LAKE AREA**  
92J.098  
By R.G. Gaba, B.N. Church, M.J. Hanna  
and D.A. James  
RELEASED FEBRUARY 1988

**LEGEND**  
BEDDED ROCKS

**TERTIARY**

**3** (Eocene?) Lavas, hoodoo-forming felsic pyroclastic rocks and minor sedimentary rocks

**UPPER TRIASSIC**

**2** CADWALLADER GROUP: comprising the Pioneer Formation (2p) consisting of basaltic pillow lava aquagene breccia, tuffs and amygdaloidal lava and lenses of limestone breccia, and the Hurley Formation (2h) consisting of argillites (siliceous and calcareous) with sandstones, polymictic conglomerates and limestone marker beds (ls)

**PALEOZOIC**

**1** FERGUSSON GROUP: mostly ribbon chert (1a), phyllite ranging to biotite quartz gneiss, some marble (1b) marker bands, chloritic schist, and fine grained amphibolite (1c); may include other irregularly distributed basic volcanic rocks

**INTRUSIVE IGNEOUS ROCKS**

**TERTIARY**

**D** REX PEAK PORPHYRY: a felsic phase of the (Eocene) Mission Ridge pluton

**UPPER CRETACEOUS**

**C** COAST PLUTONIC COMPLEX: biotite and hornblende-bearing diorite, granodiorite and granite stocks and plutons; including the outlying Bendor and Eldorado stocks (see map sheet 92J.088)

**LOWER JURASSIC**

**B** Ultrabasic Rocks: comprising the Shulaps and President harzburgite, peridotite, dunite, serpentine and listwanite bodies

**PALEOZOIC**

**A** BRALORNE INTRUSIONS: heterogeneous fine and medium-grained diorite and gabbro stocks characterized by a reticulation of felsic veinlets

**STRATIGRAPHY**

**TAYLOR CREEK GROUP**

**RELAY MOUNTAIN GROUP**

**CADWALLADER GROUP**

**FERGUSSON GROUP**

**SYMBOLS**

Geological Boundary  
Bedding - vertical, inclined  
Foliation, schistosity  
Fold Axis (plunge)  
Glacial Striae  
Fault - approximate, assumed  
Secondary road, logging road, trail  
Power Line  
Topographic contours (interval, 1000 feet)  
Properties - Prospects  
Additional sources of information: Leech (1953), Nagel (1979), Potter (1983)

**INDEX MAP**

Map Area