



OPEN FILE MAP 1990-4 (SHEET 2 OF 3)
 (Geology of the Edgar Lake map area - see 'Sheet 1 of 3' for legend)

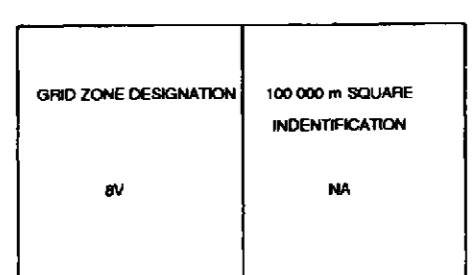
GEOLOGY AND GEOCHEMISTRY OF THE EDGAR LAKE AND FANTAIL LAKE MAP AREA

NTS (104M/8,9E)
 GEOLOGY BY: M.G. MIHALYNUK, K.J. MOUNTJOY,
 L.D. CURRIE, D.L. LOFTHOUSE AND N. WINDER
 COMPILED BY: M.G. MIHALYNUK
 AND K.J. MOUNTJOY

SCALE 1:50 000

104M/10	104M/9	104M/12
104M/7	104M/8	104M/5
104M/2	104M/1	104M/4

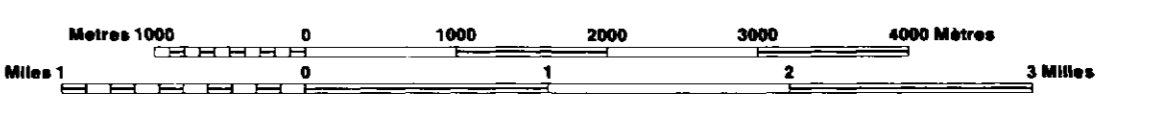
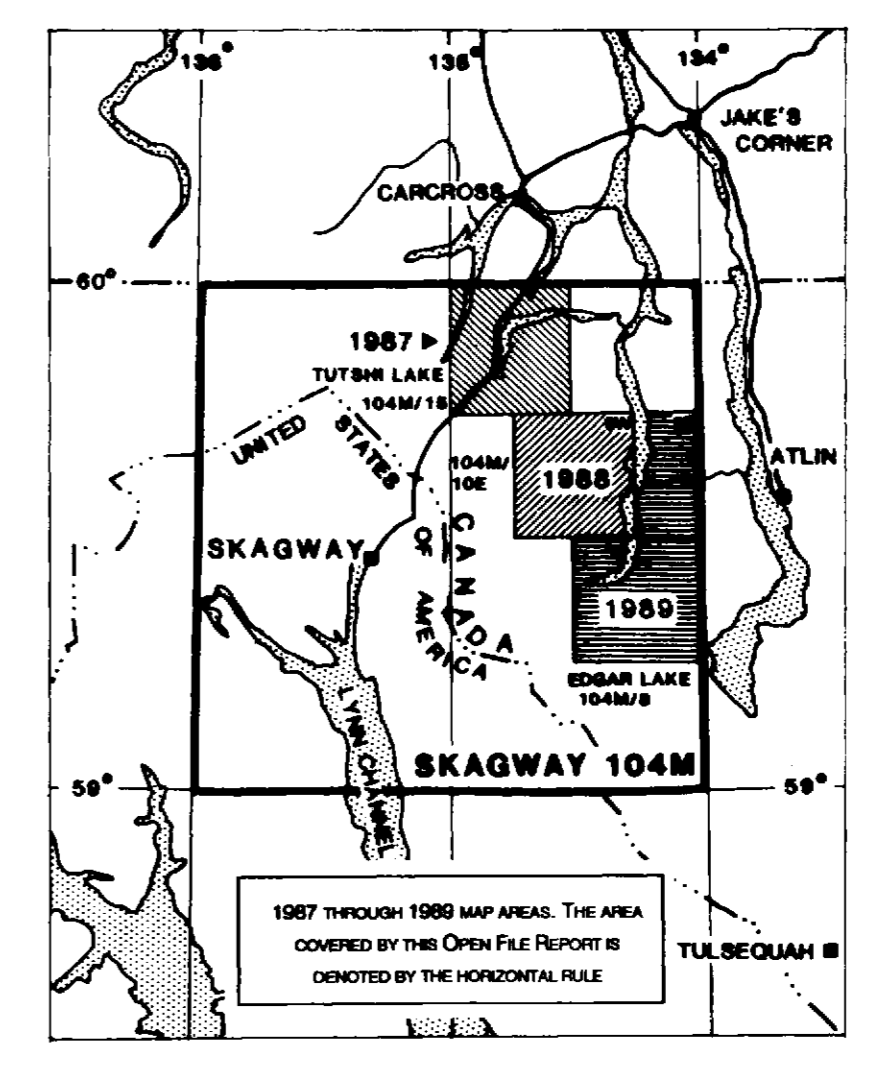
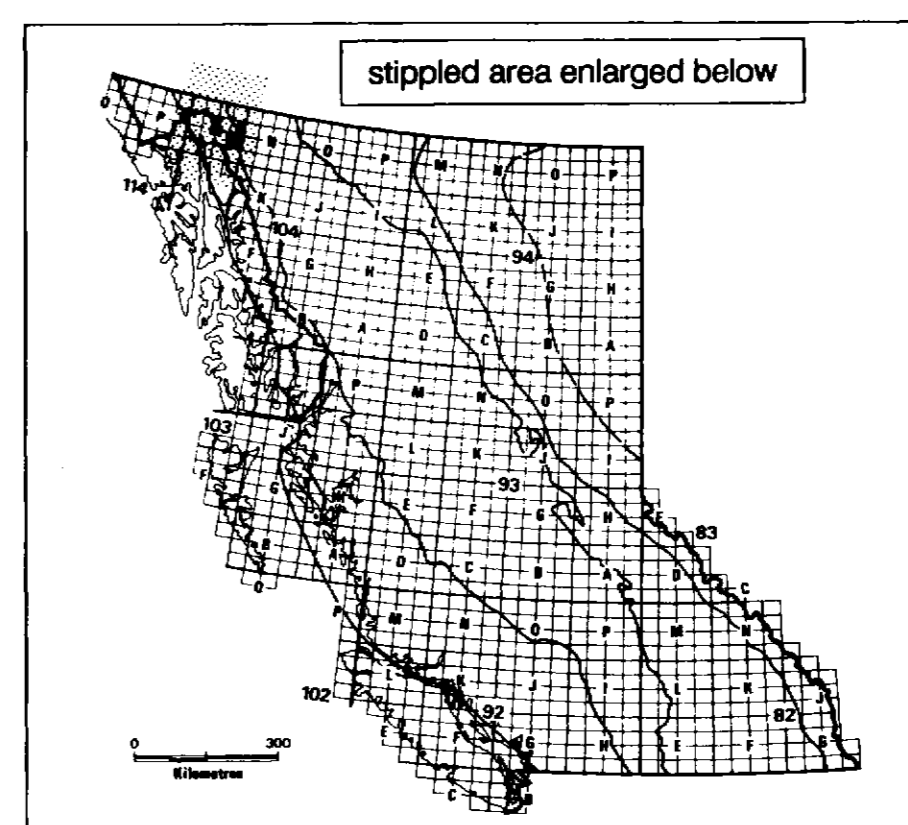
ONE THOUSAND METRE
 UNIVERSAL TRANSVERSE MERCATOR GRID
 ZONE 8



Contour interval 40 metres

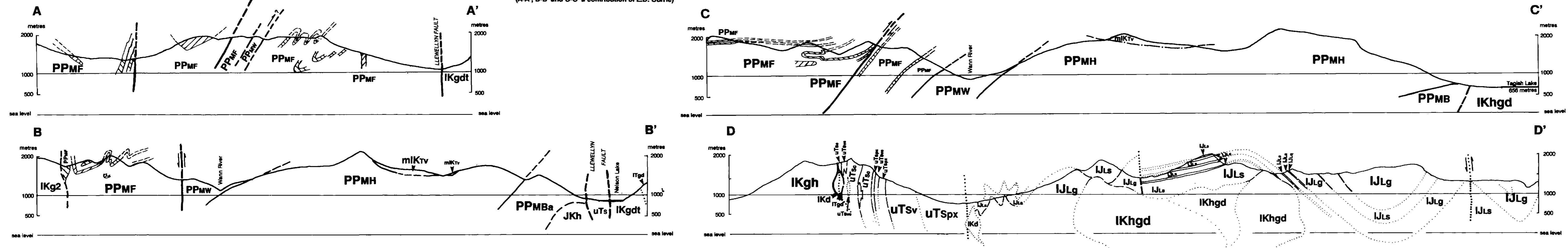
Index to adjoining Maps of the National Topographic System

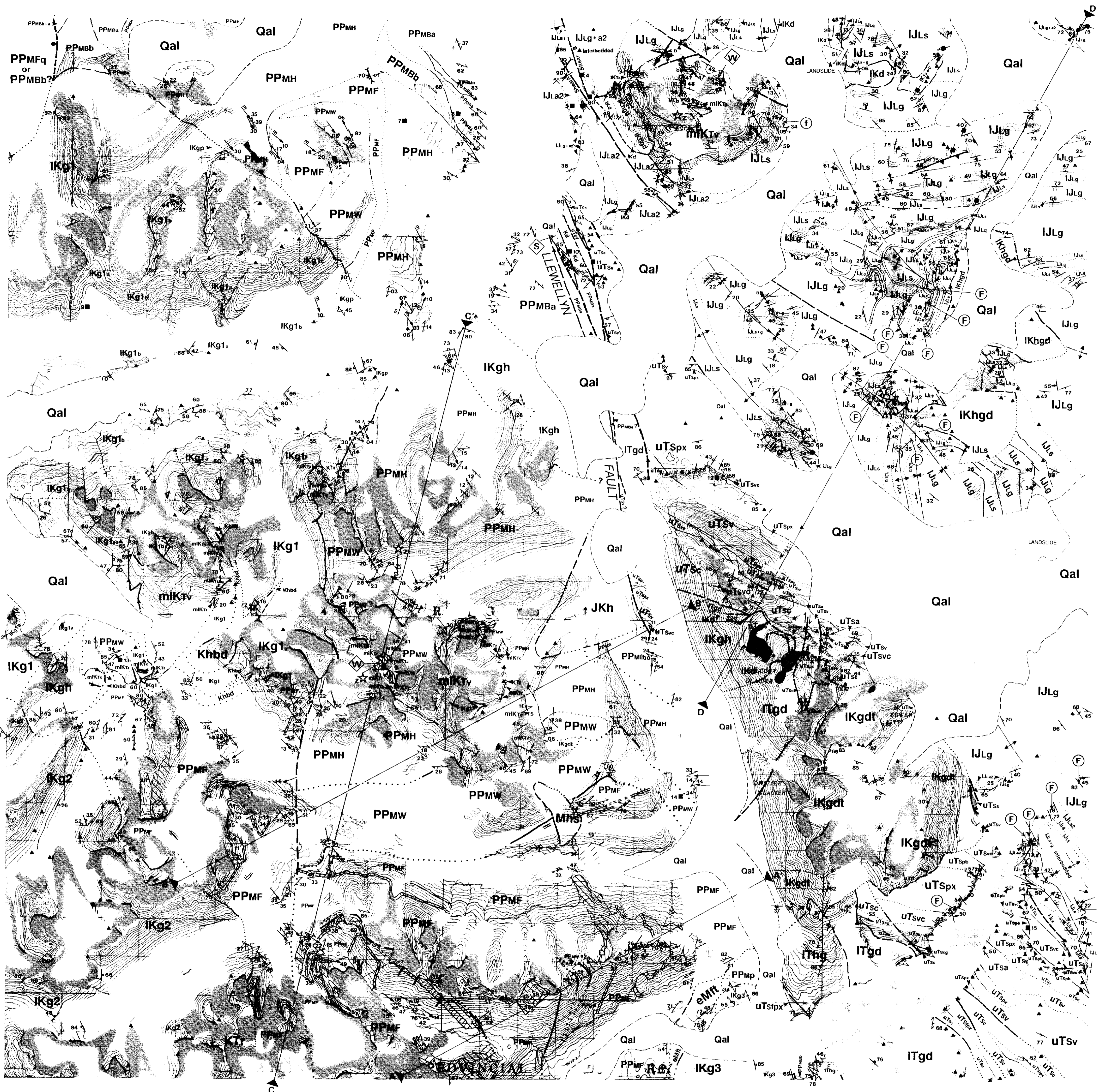
LOCATION



SCHEMATIC CROSS SECTIONS

(A-A', B-B' and C-C' a contribution of L.D. Currie)





OPEN FILE MAP 1990-4 (SHEET 2 OF 3)
 (Geology of the Edgar Lake map area - see 'Sheet 1 of 3' for legend)

GEOLOGY AND GEOCHEMISTRY OF THE EDGAR LAKE AND FANTAIL LAKE MAP AREA

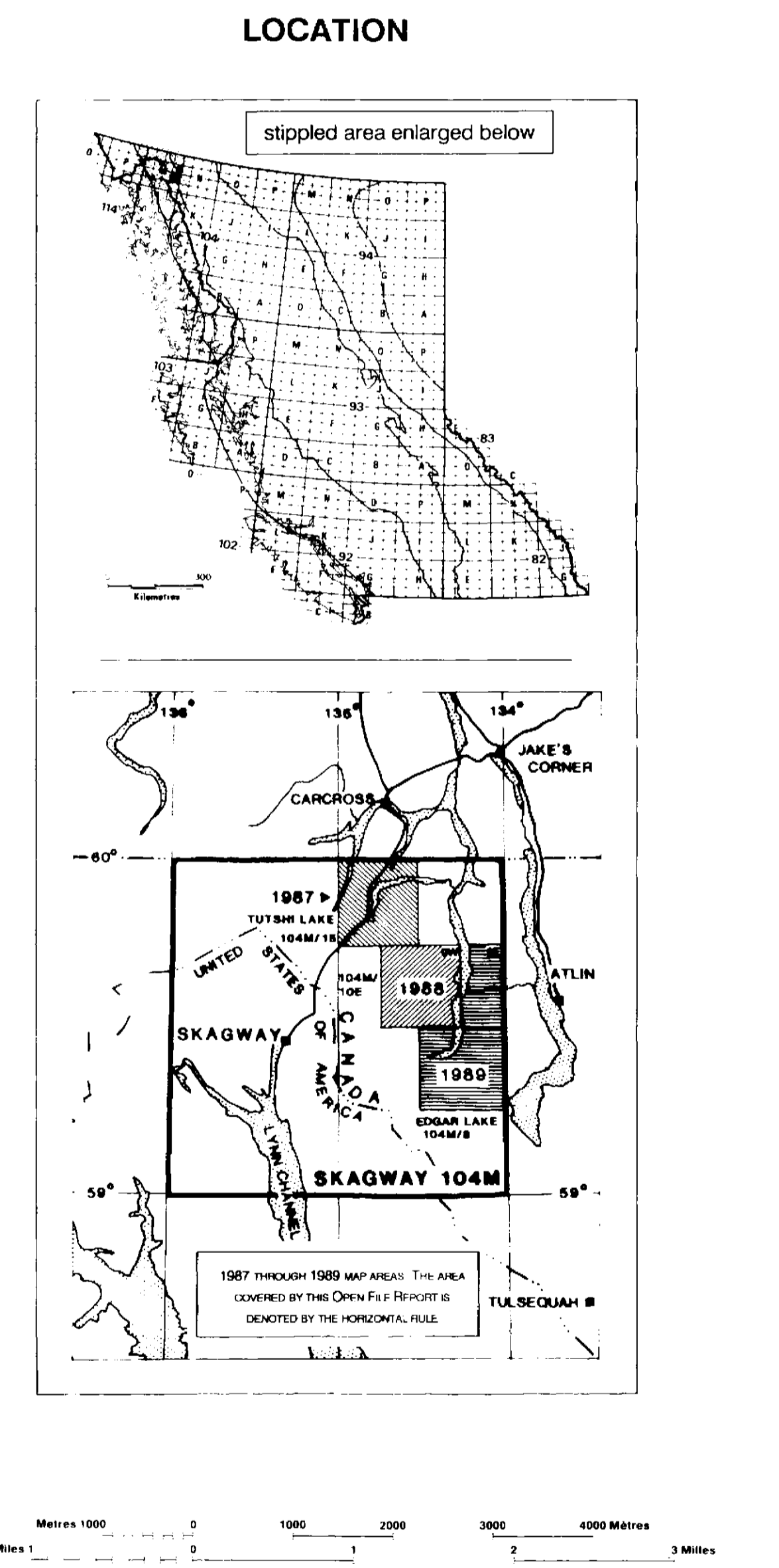
NTS (104M/8,9E)
 GEOLOGY BY: M.G. MIHALYNUK, K.J. MOUNTJOY,
 L.D. CURRIE, D.L. LOFTHOUSE AND N. WINDER
 COMPILED BY: M.G. MIHALYNUK
 AND K.J. MOUNTJOY
 SCALE 1:50 000

104M/10	104M/9	104M/12
104M/7	104M/8	104M/5
104M/2	104M/1	104M/4

ONE THOUSAND METRE
UNIVERSAL TRANSVERSE MERCATOR GRID
ZONE 8

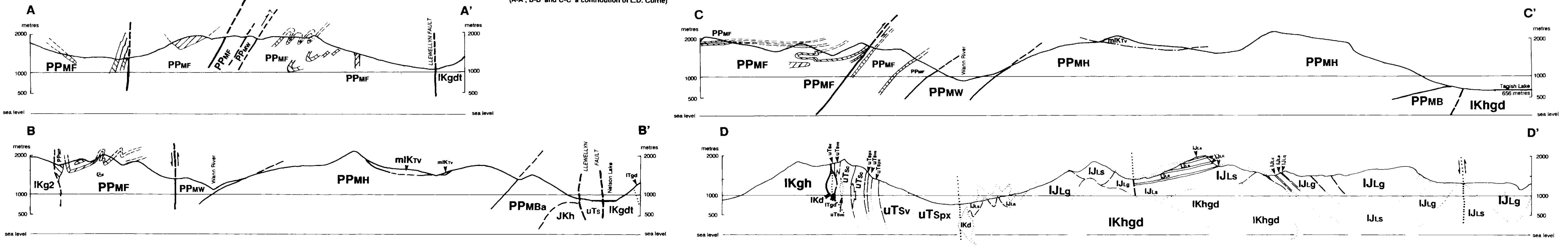
GRID ZONE DESIGNATION	100 000 m SQUARE IDENTIFICATION
SV	NA

Contour interval 40 metres



SCHEMATIC CROSS SECTIONS

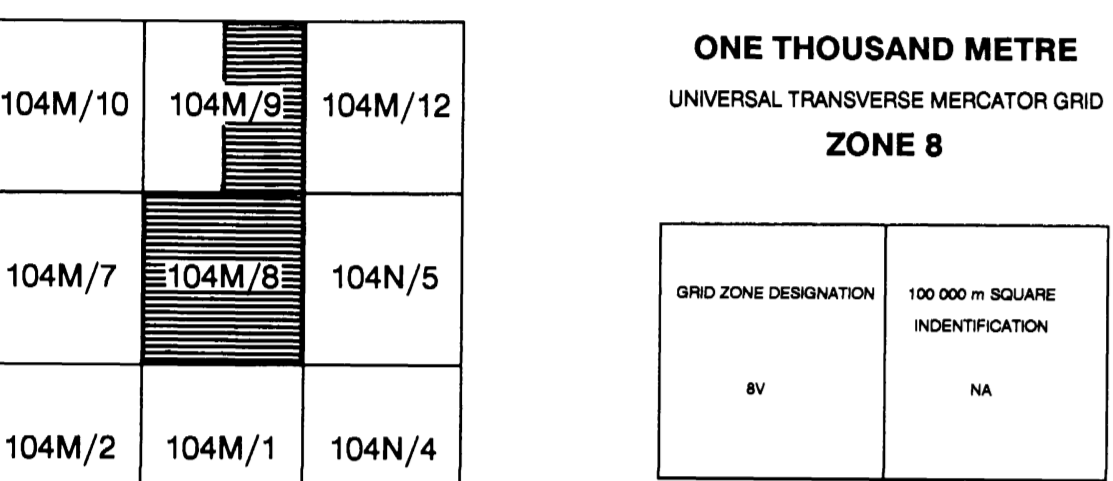
(A-A', B-B' and C-C' a contribution of L.D. Currie)



GEOLOGY AND GEOCHEMISTRY OF THE EDGAR LAKE AND FANTAIL LAKE MAP AREA

NTS (104M/8,9E) M.G. MIHALYNUK, K.J. MOUNTJOY, L.D. CURRIE, D.L. LOPTHOUX AND N. WINDER

SCALE 1:100 000

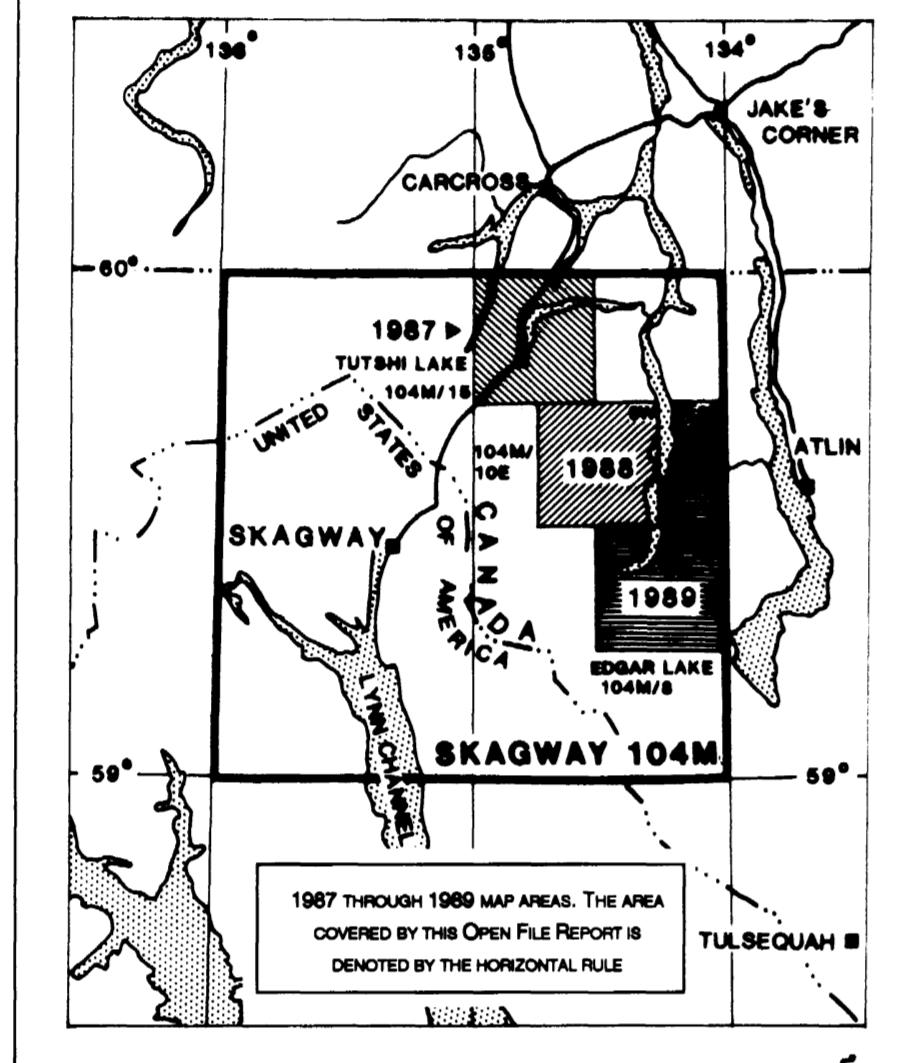
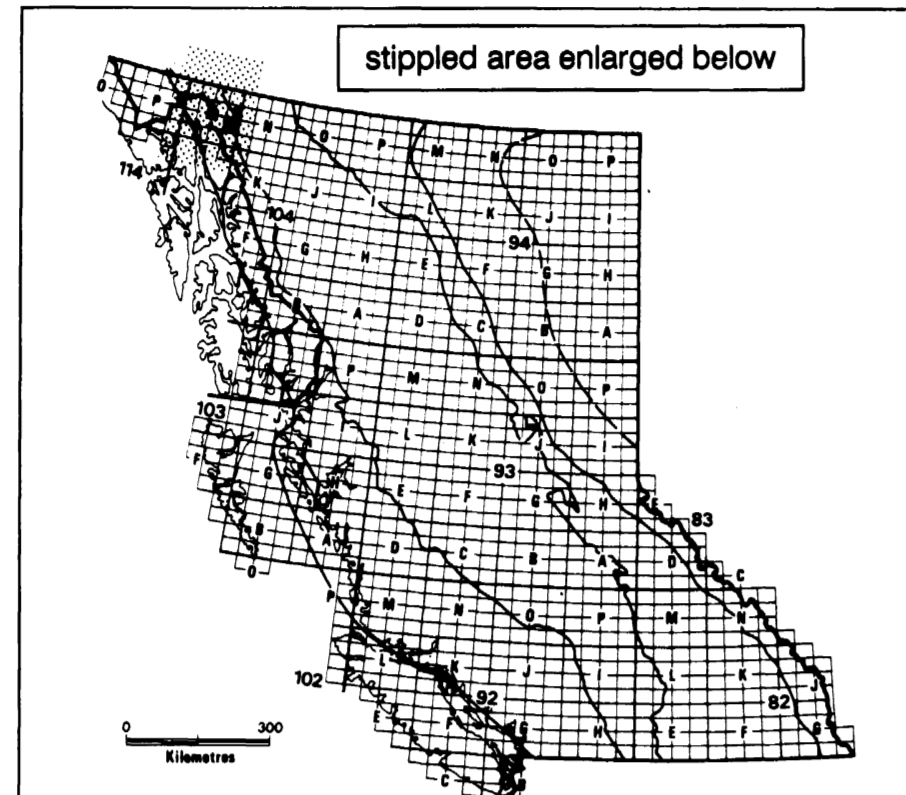


MINERAL OCCURRENCES

listed approximately from north to south

Table with 5 columns: MAP NO, NAME (MINEFILE NUMBER), COM-MODITY, ASSAY (Reference), DESCRIPTION. Lists 15 mineral occurrences with details on location, assay results, and descriptions.

LOCATION



LITHOCHEMICAL SURVEY RESULTS

Table with columns: SAMPLE No, NTS MAP, EASTING, NORTHING, and elements Au, Ag, Cu, Pb, Zn, As, Sb, Mo, Co, Ni. Lists lithochemical survey results for various samples.

ANALYTICAL PROCEDURES FOR ROCK GEOCHEMISTRY. Describes methods for sample preparation, digestion, and analysis for various elements.

REGIONAL MOSS-MAT SEDIMENT SURVEY RESULTS

Table with columns: SAMPLE NUMBER, MAP SHEET, UTM Coordinates, and a wide range of elements (Ag, Al, As, Au, Ba, Bi, B, Br, Ca, Cd, Co, Cr, Cu, Fe, Ge, Hg, K, La, Mg, Mn, Mo, Na, Ni, P, Pb, Sb, Se, Sr, S, Te, Th, Tl, U, V, W, Zn). Lists regional moss-mat sediment survey results.

ANALYTICAL PROCEDURES FOR MOSS-MAT SEDIMENT GEOCHEMISTRY. Describes methods for sample collection, preservation, and analysis.

EXPLANATION OF COLUMN HEADINGS. Provides a key for the sample numbers and map sheet identifiers used in the tables.