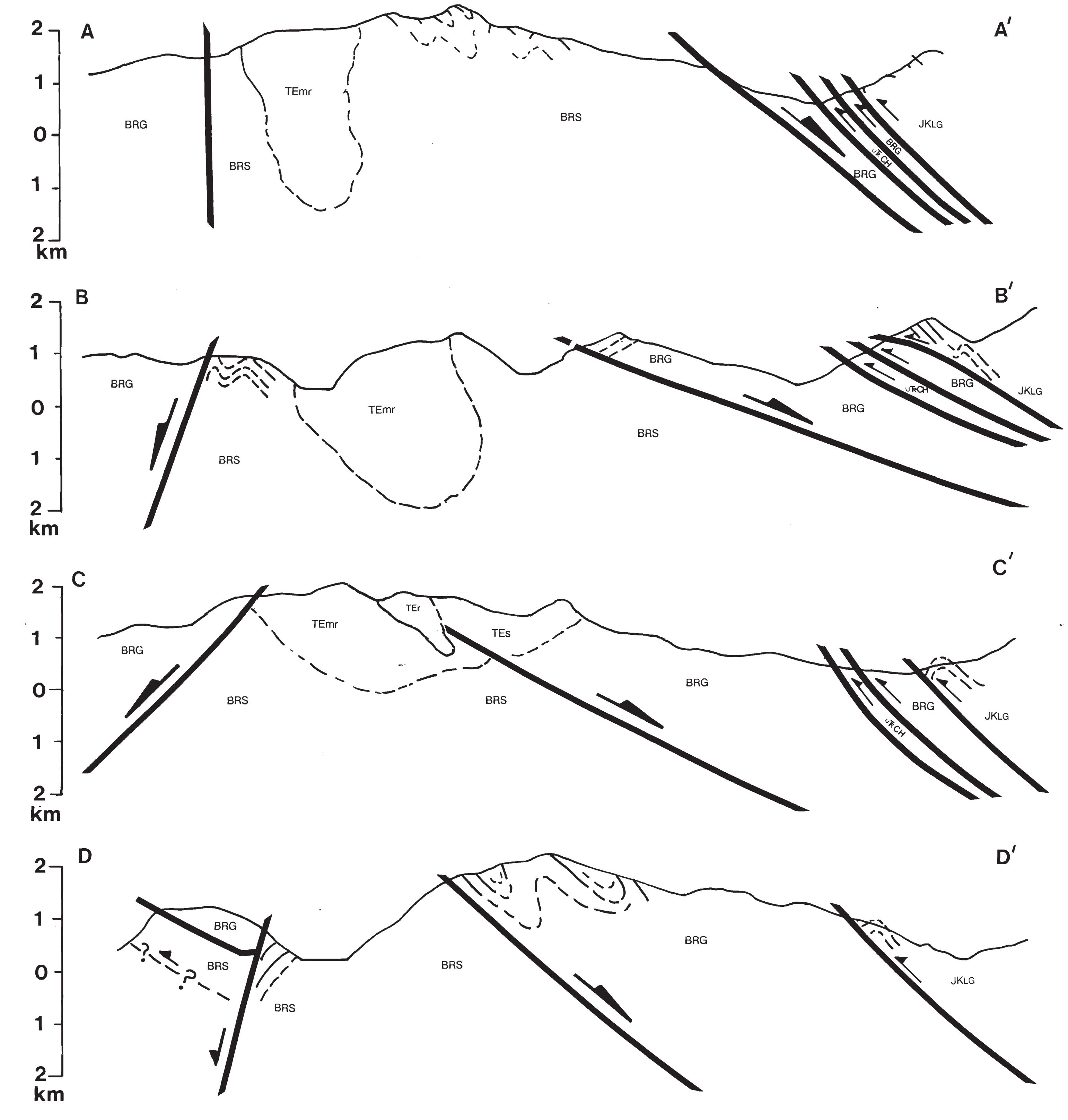
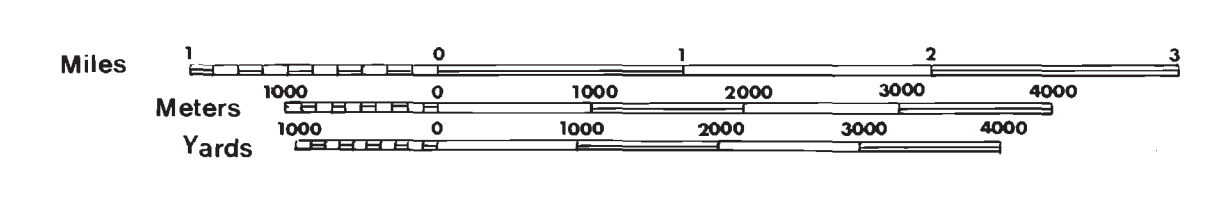


OPEN FILE 1991-13

GEOLOGY OF THE MISSION RIDGE AREA,
SOUTHWESTERN BRITISH COLUMBIA

NTS 092J/9, 10, 15, 16
Geology by M.E. COLEMAN

Scale 1:50 000



LEGEND

STRATIFIED ROCKS		INTRUSIVE ROCKS	
EOCENE(?)	TES Conglomerate, sandstone, and siltstone	EOCENE(?)	TE ₁ Leucocratic felsite, in part hornblende phytic
UPPER JURASSIC TO LOWER CRETACEOUS		MIDDLE EOCENE	
LILLOOET GROUP		MISSION RIDGE PLUTON: hornblende-biotite-bearing granodiorite	
JKLG	Argillite, fine-grained sandstone, and coarse-grained volcanic sandstone	TEmr	
BREW GROUP		SYMBOLS	
JKDg	Argillite, quartzite, conglomerate, and their metamorphosed equivalents	Geological contact (defined, approximate, assumed) - - - - -	
UPPER TRIASSIC		Thrust fault; teeth in direction of dip (defined, approximate, assumed) - - - - -	
CADWALLADER GROUP		Normal fault (solid circle on down thrown side) - - - - -	
HURLEY FORMATION		Bedding - - - - -	
URCh	Thin- to thick-bedded sandstone, calcarenite and shale; lesser amounts of limestone-volcanic conglomerate and volcanic sandstone; minor greenstone and greenstone breccia	Shear fracture - - - - -	
PERMIAN TO JURASSIC		Foliation - - - - -	
BRIDGE RIVER GROUP		Stretching lineation - - - - -	
BRG	Undivided ribbon chert, argillite and pillowed to massive greenstone, with lesser amounts of limestone, gabbro, diabase, sandstone, pebble conglomerate and serpentinite	Crenulation lineation - - - - -	
LS	Limestone	Arrow indicates direction of movement of upper member of shear couple - - - - -	
BRIDGE RIVER SCHIST		Mesoscopic fold axis, anticline, syncline - - - - -	
BRS	Undivided meta-chert, phyllite, green chloritic schist, orthogneiss, and minor amounts of marble, biotite-quartz schist, talc schist, chert, argillite, greenstone and limestone.	Arrows indicate relative sense of strike-slip movement - - - - -	
AGE UNKNOWN		Sample location of U-Pb zircon age determination - - - - -	
SHULAPS ULTRAMAFIC COMPLEX			
SM	Serpentinite melange unit: serpentinite with blocks of ultramafic rock, gabbro, diorite, pillowed and massive greenstone		
S	Serpentinite		