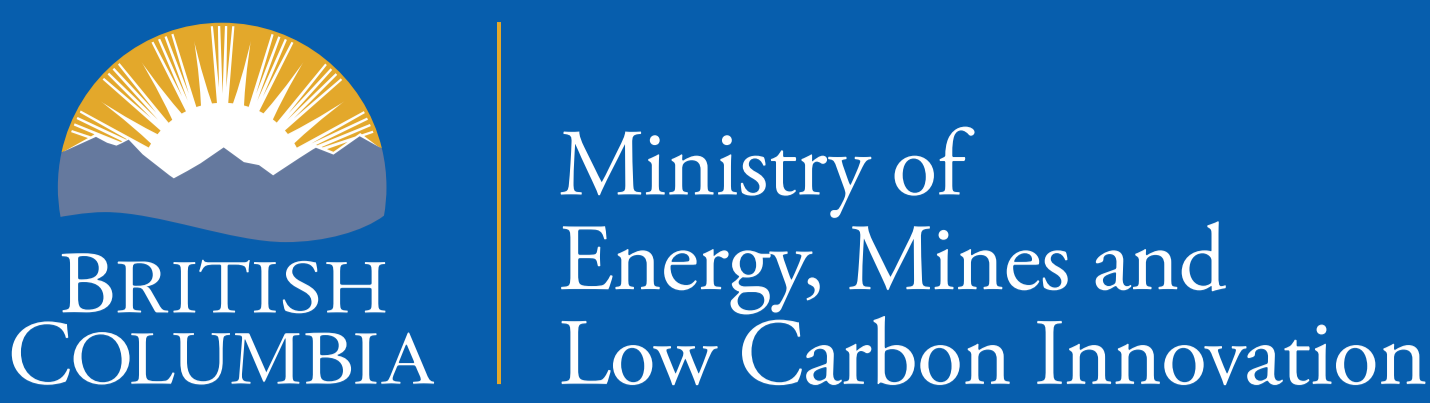




Exploration and mining highlights, Southeast Region, 2021

Kirk Hancock^{1,a}
British Columbia Geological Survey, Ministry of Energy, Mines
and Low Carbon Innovation,
Victoria BC, V8W 9N3
Kirk.Hancock@gov.bc.ca



Overview

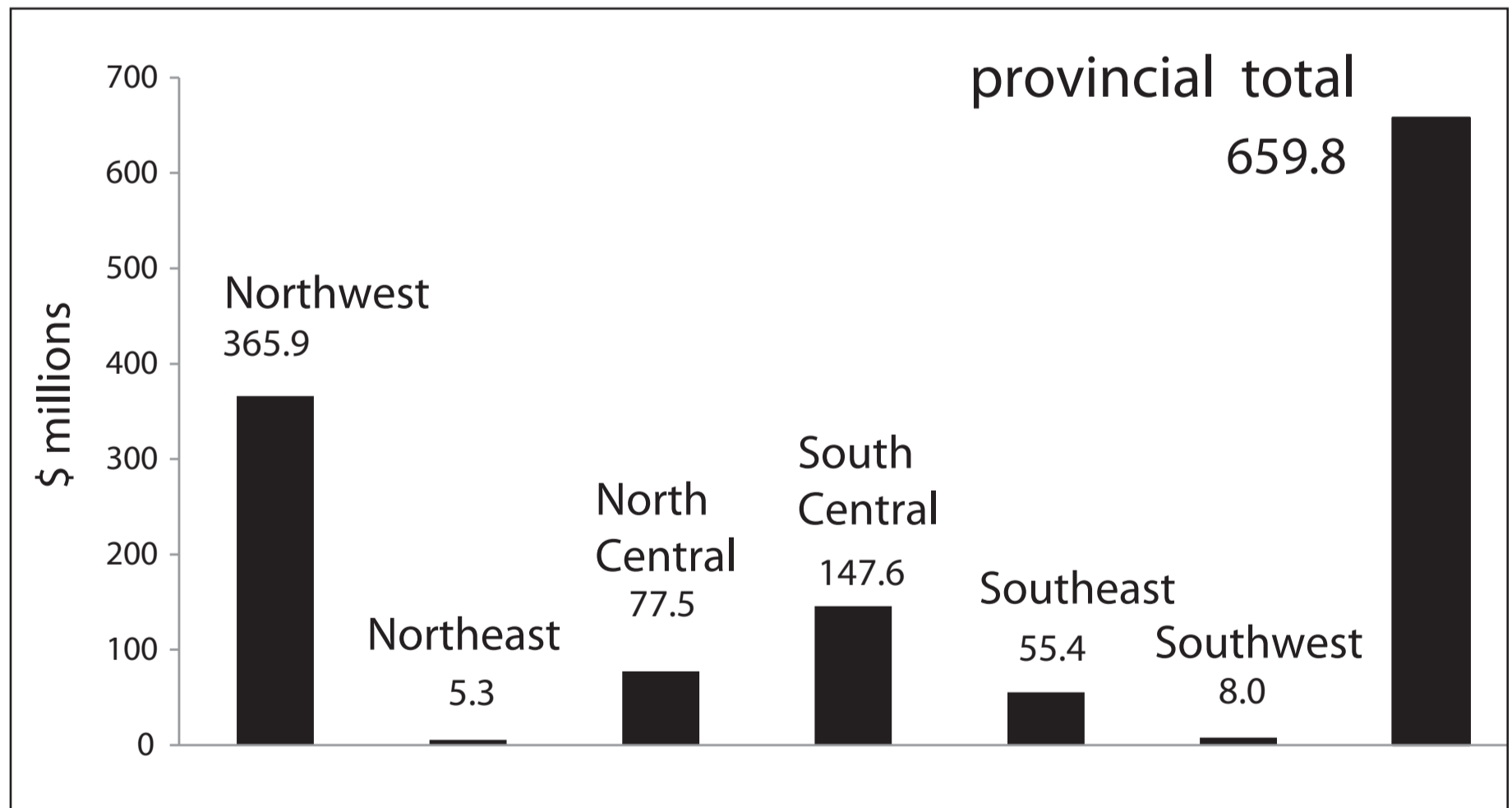
Four metallurgical coal mines operate in the Elk Valley of the Southeast Region, accounting for most of Canada’s coal production and exports, and mine expansion and exploration continued at these mines.

Dating back to the mid-1800s, the region has a long history of metals mining, including lead, zinc, and silver from the past-producing Sullivan mine and gold and silver from the Rossland, Greenwood, Sheep Creek, and Slocan camps. Today, exploration in the region focusses on base and precious metals. The region hosts several industrial mineral mines and quarries, and placer mining continues. The Trail smelter (Teck Resources Ltd.) produces refined zinc and lead, silver, critical metals (including germanium, indium, and cadmium), and fertilizer products.

Although the number of exploration projects remained similar to that of recent years, the amount of drilling decreased. During the summer fire season, many programs had to be temporarily suspended, but exploration continued into the fall and some programs remained active in December. Unusually intense rainstorms in November caused temporary transport infrastructure collapse from floods and slope failures. Although production was unaffected, rail links from Elk Valley to Neptune and Westshore terminals in the Lower Mainland were cut. Some coal was rerouted north to Ridley Terminals in Prince Rupert, some south through the United States.

Exploration and drilling estimates

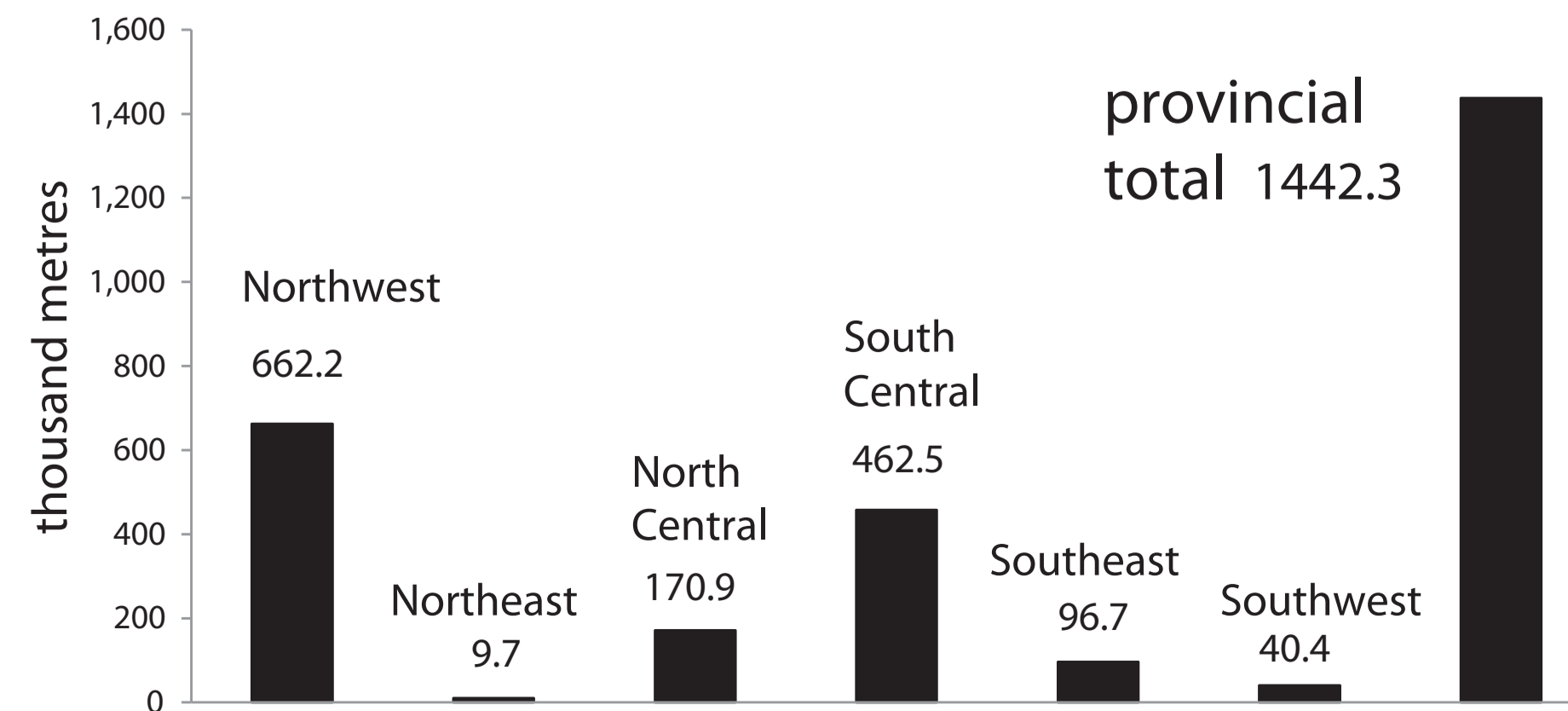
Province, expenditures by region



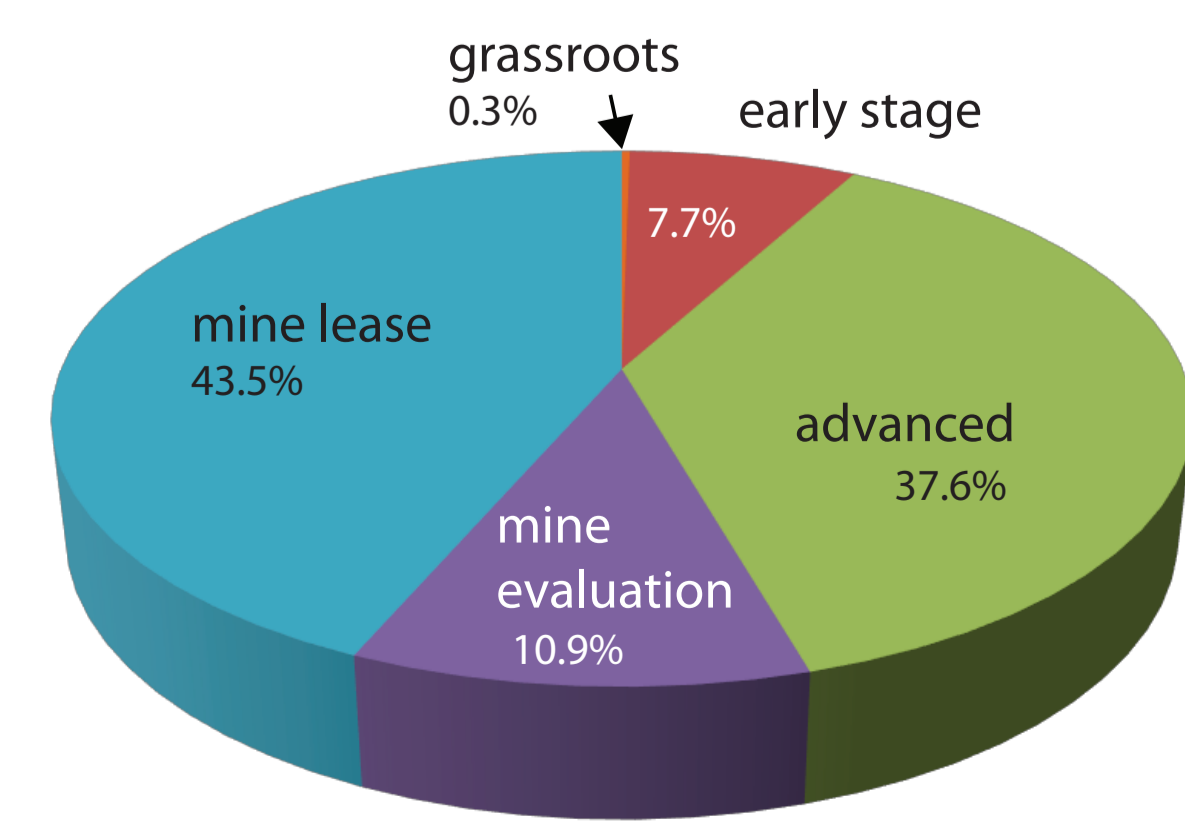
Total British Columbia:
• Exploration expenditures: \$ 657.9 million
• Drilling: 1,437,300 m

Southeast Region
• Exploration expenditures: \$55.4 million
• Drilling: 96,700 m

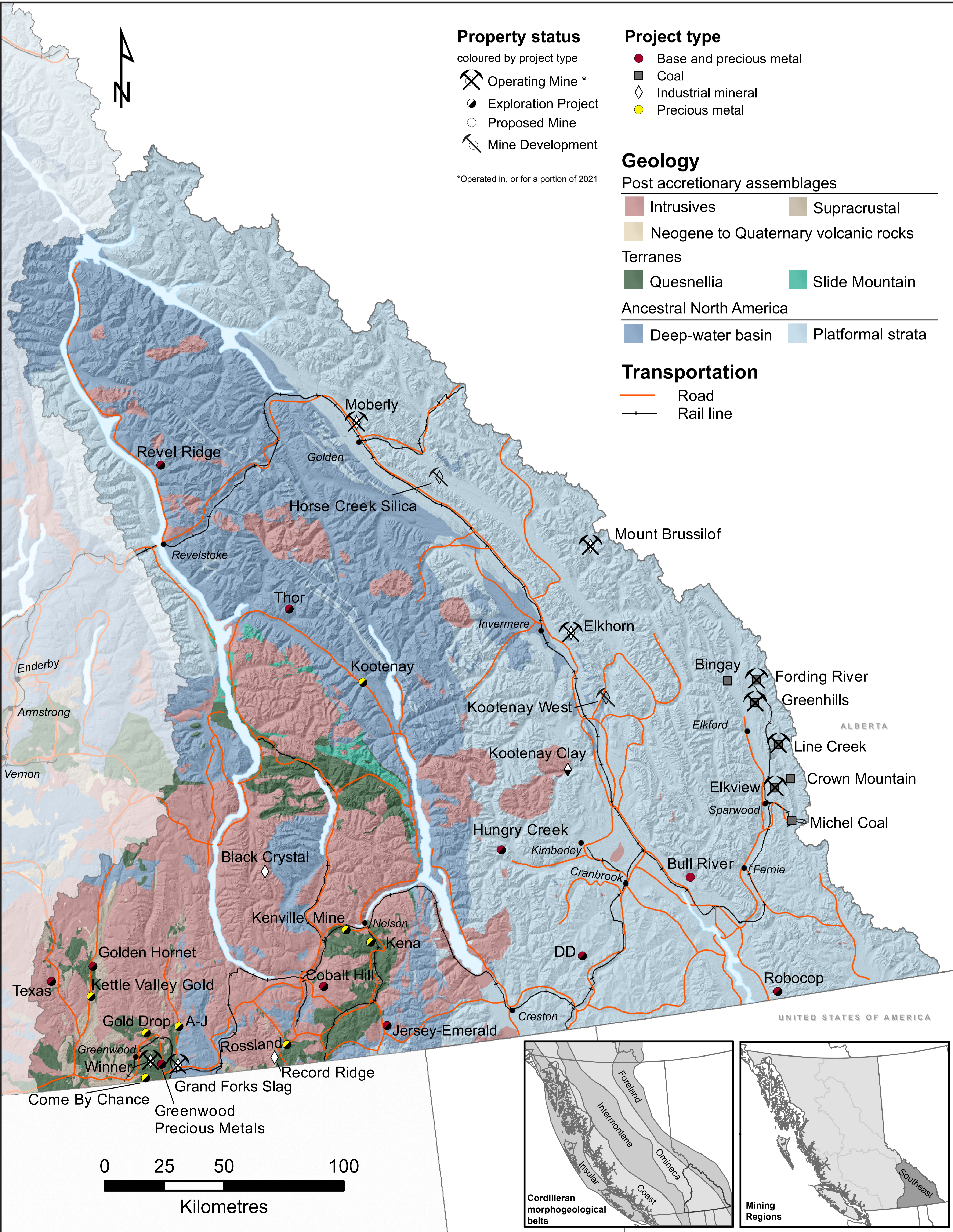
Province, drilling



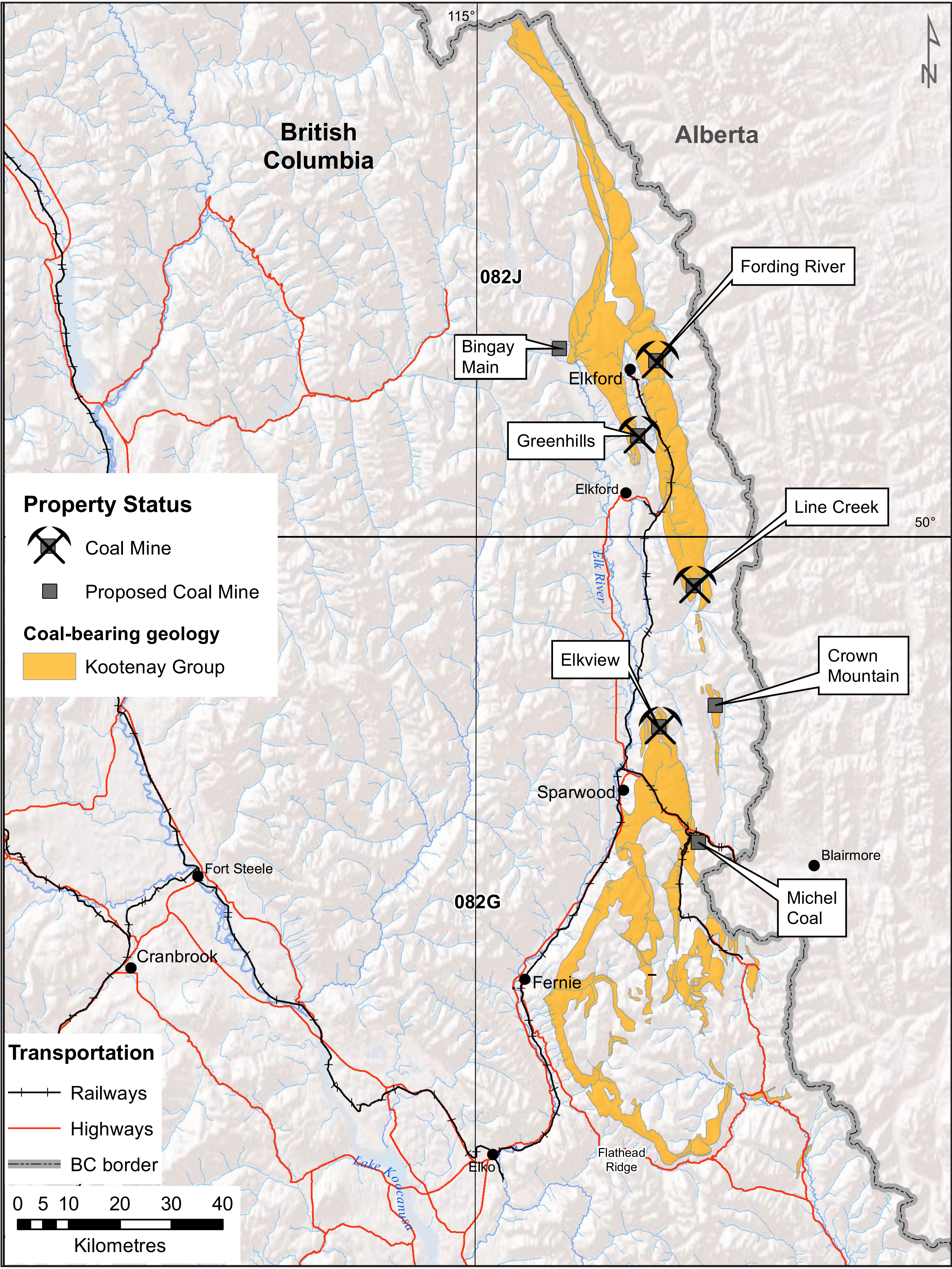
Southeast Region, expenditures by category



Mines, selected proposed mines, and selected exploration projects



Coal mines and selected projects



Exploration drilling highlights

A-J (Belmont Resources Inc.): 14.66 m of 1.78 g/t Au in one hole and 0.43 m of 9.35 g/t Au in another.

Kena (West Mining Corp.): 146.5 m of 0.32 g/t Au.

Revel Ridge (Rokmaster Resources Corp.): underground drilling, 26.2 m grading 1.73 g/t Au, 14.38 g/t Ag, 0.75% Pb, and 4.95% Zn, and 1.0 m grading 7.22 g/t Au, 4.00 g/t Ag, 0.32% Pb, and 0.41% Zn; surface drilling, 3.60 m grading 0.19 g/t Au, 244.28 g/t Ag, 6.25% Pb, and 18.09% Zn and 2.70 m grading 0.03 g/t Au, 83.69 g/t Ag, 4.20% Pb, and 8.64% Zn.

Texas (Troubadour Resources Inc.): 5.9 m grading 1.78 g/t Au; 0.8 m with 8.79 g/t Au.

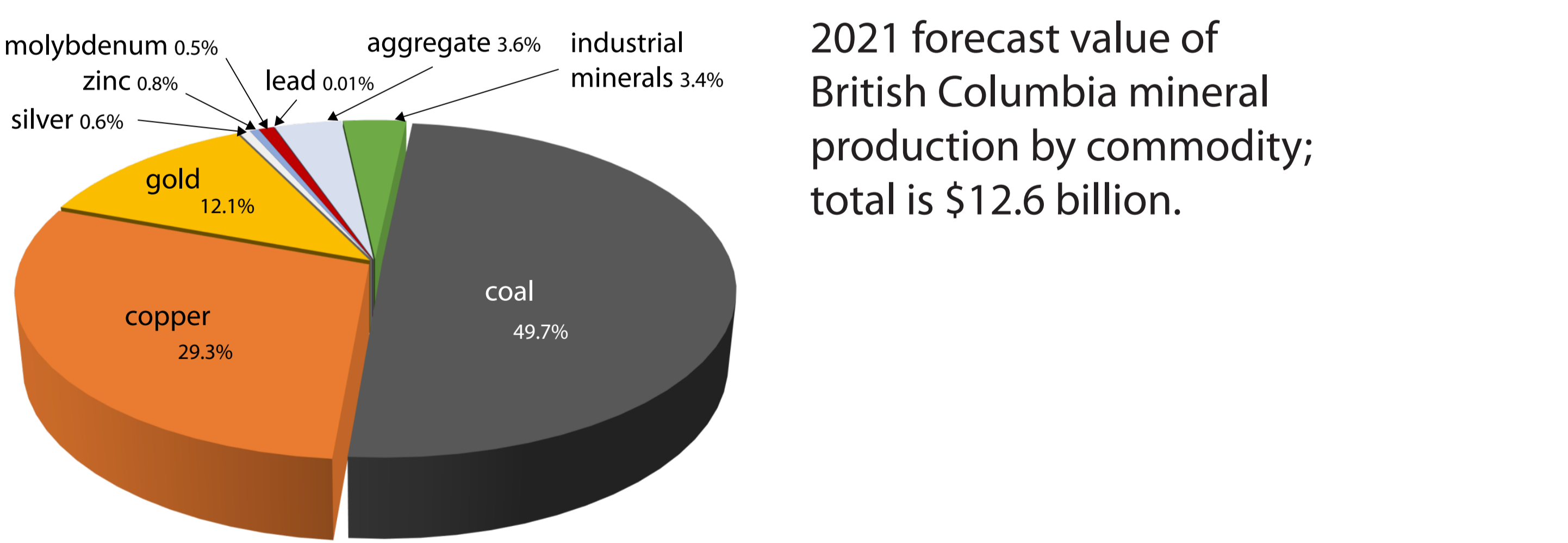
Thor (Taranis Resources Inc.): 10.30 m with 0.07% Cu, 1.07% Pb, 2.13% Zn, 103.42 g/t Ag, and 0.35 g/t Au; within which 3.96 m with 0.15% Cu, 2.63% Pb, 3.63% Zn, 253.8 g/t Ag and 0.61 g/t Au.

Mining highlights

Coal remains British Columbia’s most valuable mined commodity with sales forecasted at CDN \$6.26 billion for 2021, which accounts for approximately 49.7% of the mining revenue for the province. In the Southeast Region, Teck Coal Limited mines coal seams of the Kootenay Group (upper Jurassic to lower Cretaceous) at four open-pit operations along the Elk River valley: **Fording River**, **Greenhills**, **Line Creek**, and **Elkview**. Resource expansion drilling continued at the Fording River Extension project.

Total annual production in the Southeast Region is forecast to be 26 Mt of metallurgical coal. Teck reported that Q3 2021 production (6 Mt) was 17.6% higher than the same quarter in 2020.

Proposed coal mines include **Bingay Main**, (Centerpoint Resources Inc.), **Crown Mountain** (NWP Coal Canada Ltd.), and **Michel Coal** (North Coal Ltd.).



The Southeast Region has several industrial mineral mines and quarries. The operators range from local companies through to large international corporations. No metal mines are operating.

Further information

Hancock, K., 2022. Exploration and mining in the Southeast Region, British Columbia. In: Provincial Overview of Exploration and Mining in British Columbia, 2021. British Columbia Ministry of Energy, Mines and Low Carbon Innovation, British Columbia Geological Survey, Information Circular 2022-01, pp. 105-116.

EY LLP, 2022. British Columbia Mineral and Coal Exploration Survey 2021 Report.

Recommended citation
Hancock, K., 2022. Exploration and mining highlights, Southeast Region, 2021. British Columbia Ministry of Energy, Mines and Low Carbon Innovation British Columbia Geological Survey GeoFile 2022-05 (poster).

