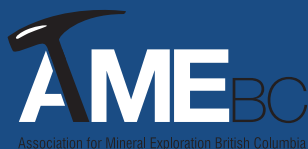


OPPORTUNITIES TO EXPLORE

BRITISH COLUMBIA MINERALS AND COAL INDUSTRY



Digital copy (15MB)



MINISTER'S MESSAGE

Mineral exploration and mining in British Columbia has come a long way since its origins in the province over 150 years ago. From the early panning and rudimentary mining carried out during our own Gold Rushes of the 1800's, our province now has 18 major mining operations in production and more than 20 other prospective projects working their way through our permitting processes. Today, B.C. is considered to be a global leader in mining and mineral production, and over 1000 companies base themselves out of Vancouver. We are Canada's single largest exporter of coal, the largest producer of copper and the only producer of molybdenum. Well over \$470 million was spent on exploration in 2013, and over \$1 billion has been spent in the past two years. These are positive accomplishments that have been made possible by offering a globally competitive environment for the industry. From competitive and fair taxation to a streamlined set of permitting and environmental assessment regulations and practices, our government has worked hard to build a positive environment for mining.

For domestic and overseas investors, British Columbia provides a stable jurisdiction where companies can invest their capital and develop projects. Our government is one of only two provinces in Canada to balance its budget, and as a result of this discipline we have retained a triple-A credit rating from both major credit agencies and have one of the healthiest debt-to-GDP ratios in North America. To make it easier for companies to do business we have reduced red tape and regulations by 40% over the past 10 years, and to continue to attract investment we have maintained some of the lowest corporate and personal income taxes in Canada.

Between 2011 and 2013, our government has increased the level of service to the mining industry and has made significant improvements to our permitting processes, which included additional inspectors, an online application system and additional permitting options such as multi-year area-based permitting and deemed authorizations. The result of these changes have been a reduction in permit turnaround time to less



Bill Bennett, Minister of Energy and Mines and Minister responsible for Core Review, at the Association for Mineral Exploration British Columbia's ringing of the bell to open the Toronto Stock Exchange in January 2014.

than half what it was three years ago and a number of major mines and major mine expansions gaining approval. Getting a major mine from discovery to production can still take many years, however, and we're continuing to streamline our part of the process by improving the timeliness and efficiency of Major Mine Project Authorizations.

The mineral exploration and mining industry has built and sustained BC communities for more than 150 years and we believe it will continue to do so moving forward. BC will continue to focus on competitiveness and encouraging the growth of this essential industry and with a government that is committed to working hard to attract investment and improve the ability for the industry to do business, we believe that the future of mining is positive.

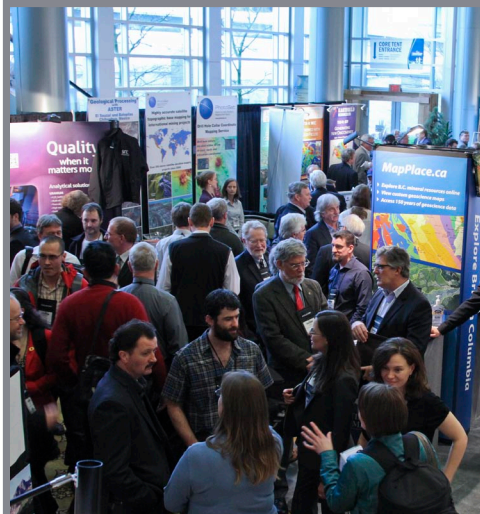
This publication, *Opportunities to Explore*, is an excellent overview of B.C.'s mineral exploration and mining industry from a regulatory standpoint. I hope it will guide you through our regulatory processes and provides you with incentive on the excellent investment opportunities available in our resource-rich province.

Honourable Bill Bennett,
Minister of Energy and Mines and Minister Responsible for Core Review

May 2014

TABLE OF CONTENTS

4	INTRODUCTION
6	COMMODITIES
16	INFRASTRUCTURE
19	PUBLIC GEOSCIENCE
22	TENURE ACQUISITION
24	MINE PERMITTING
26	FIRST NATIONS RELATIONS



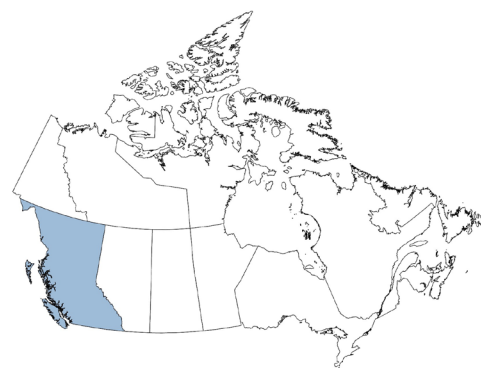
28	TAXATION
29	INCENTIVES
30	WORKFORCE
31	EXPLORING OPPORTUNITIES
32	PUBLICATIONS
33	CONTACTS
34	WEB LINKS
35	CONTRIBUTING PARTNERS



WELCOME TO BRITISH COLUMBIA

British Columbia is Canada's westernmost province and a gateway to the Pacific Ocean. Cosmopolitan cities and a clean environment make British Columbia a great place to live and work. The province leads Canada in life expectancy and environmental quality of life. Social stability and low crime rates make BC communities safe and secure.

Natural resources such as fish, minerals, hydroelectricity, natural gas, and timber are the backbone of BC's economy. Ecotourism and agricultural tourism, film production, and high technology have become important more recently.



More information about
BC can be found at
www.hellobc.com

BRITISH COLUMBIA OFFERS

- a buoyant and diverse economy
- vibrant First Nations communities
- a rich cultural diversity with over 10 different languages spoken
- social, economic, and political stability
- low crime rates
- low-cost healthcare
- an advanced education system
- a highly skilled and educated population

British Columbia is Canada's largest exporter of coal, leading producer of copper, and only producer of molybdenum. It also ranks as one of Canada's top producers of gold, silver, lead, and zinc.

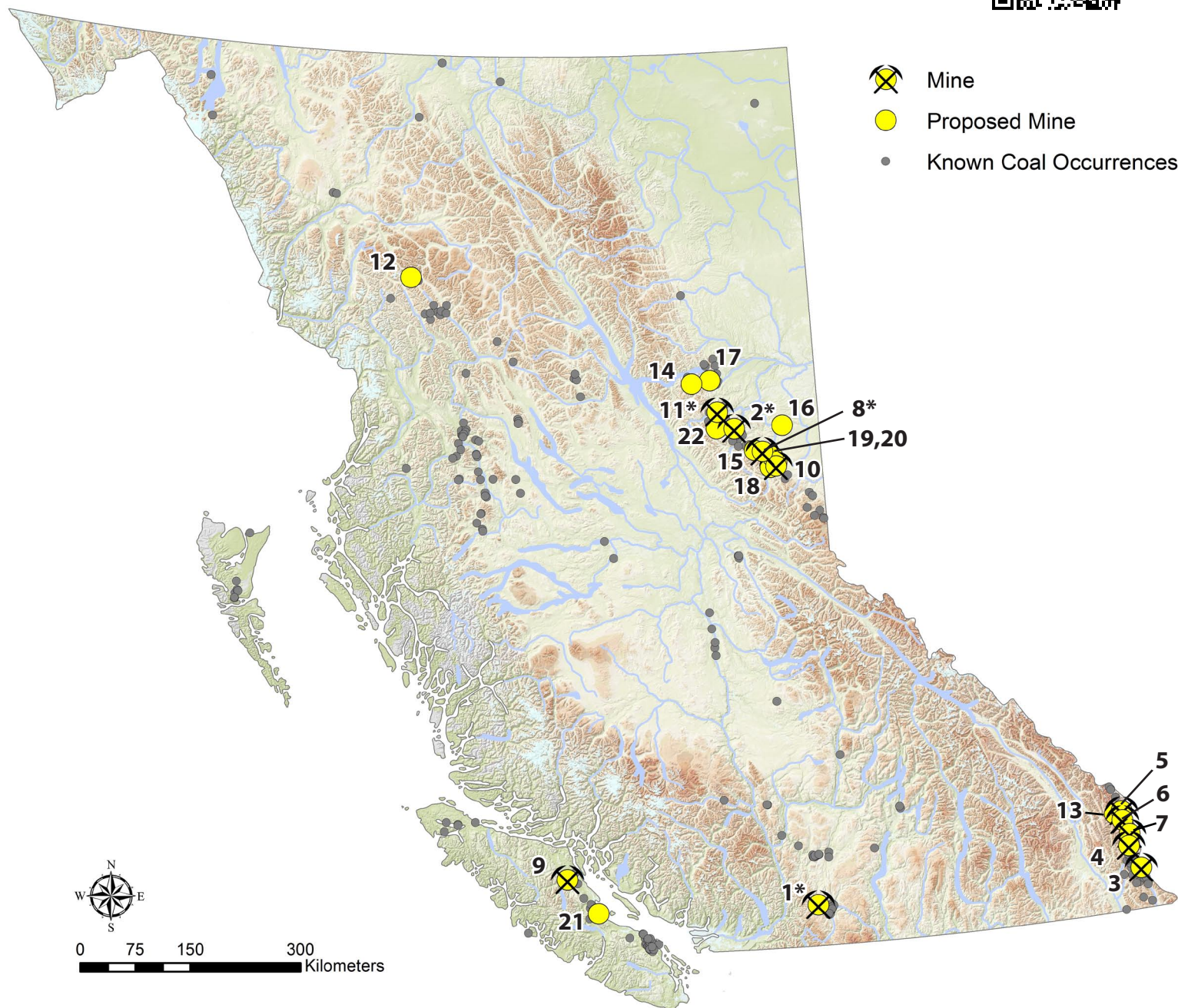


COAL

British Columbia's largest solid mine product by value is metallurgical coal. Mines produce primarily hard coking coal (HCC) with lesser amounts of pulverized injection coal (PCI) also being produced. One thermal coal mine operates in BC while thermal coal is also produced as a co-product at several metallurgical coal mines.



Printable Commodity Maps
(9MB)



OPERATING MINES

Mine	Operator	Commodity
1. Basin*	Coalmont Energy Corp.	Thermal
2. Brule*	Walter Energy, Inc.	PCI Coal
3. Coal Mountain	Teck Coal Limited	PCI and Thermal Coal
4. Elkview	Teck Coal Limited	HCC
5. Fording River	Teck Coal Limited	HCC and Thermal Coal
6. Greenhills	Teck Coal Limited	HCC, PCI and Thermal Coal
7. Line Creek	Teck Coal Limited	HCC, PCI and Thermal Coal
8. Perry Creek*	Walter Energy, Inc.	HCC
9. Quinsam	Quinsam Coal Corporation	Thermal Coal
10. Trend	Peace River Coal Inc.	HCC
11. Willow Creek*	Walter Energy, Inc.	HCC and PCI Coal

PROPOSED MINES

Mine	Operator	Commodity
12. Arctos Anthracite	Fortune Minerals Limited	Anthracite
13. Bingay Main	Centermount Coal Ltd.	MET
14. Carbon Creek	Cardero Resources Corp.	MET
15. EB	Walter Energy, Inc.	HCC
16. Echo Hill	Hillsborough Resources Ltd.	Thermal Coal
17. Gething Bri-Dowling	Canadian Kailuan Dehua Mines Co. Ltd.	HCC
18. Horizon Ridge	Anglo American Canada plc	MET
19. Murray River	HD Mining International Ltd.	MET
20. Quintette-Babcock	Teck Coal Limited	MET
21. Raven	Compliance Coal Corporation	MET
22. Sukunka	Glencore	MET

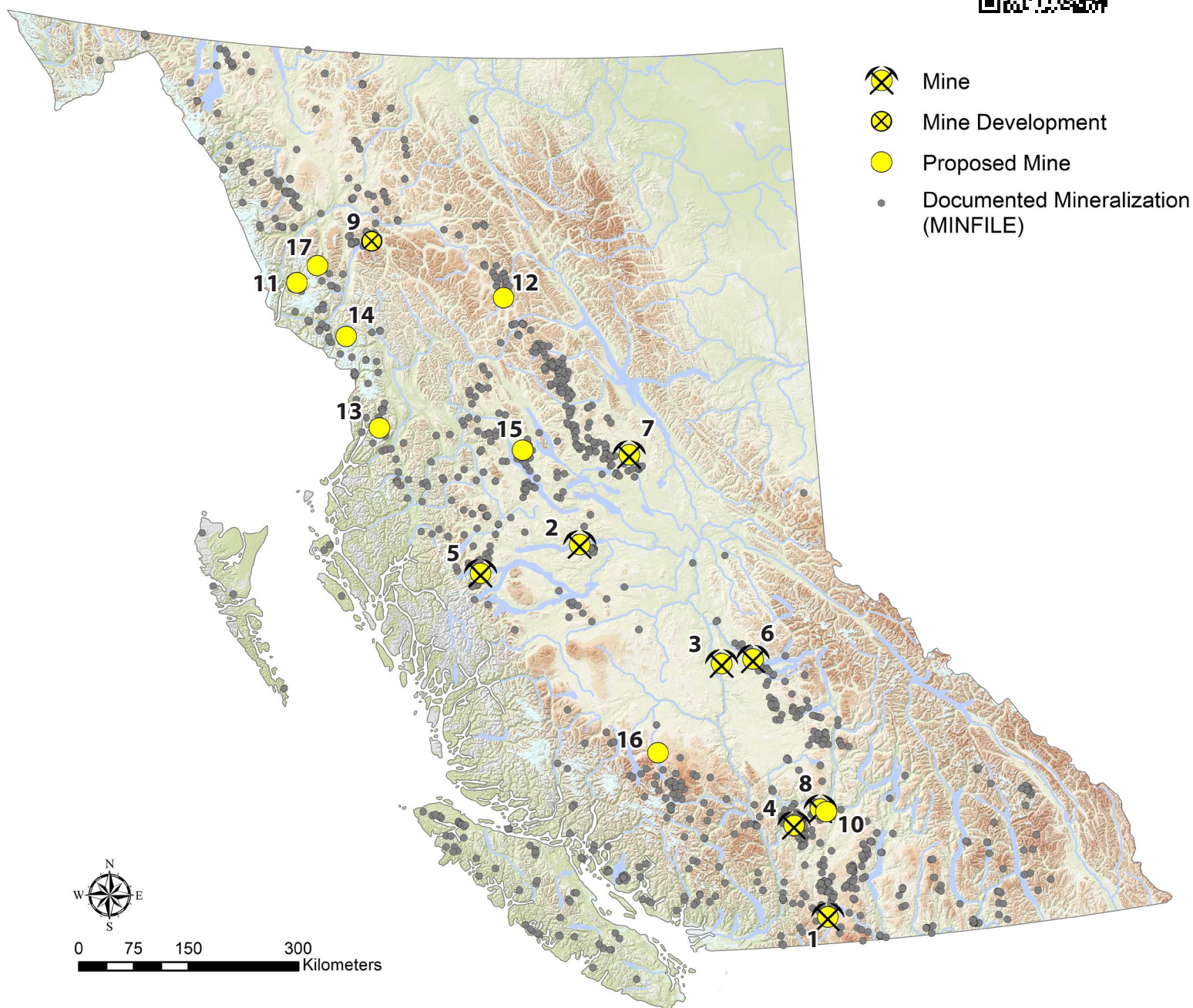
* denotes intermittent operation

COPPER, GOLD & MOLYBDENUM

Porphyry-related deposits

British Columbia produces most of its copper from disseminated bulk tonnage deposits known as porphyries, which can also contain significant amounts of gold and/or molybdenum. Porphyries are most commonly mined using open pit methods, although high-grade mineralization may be mined using underground methods.



Printable Commodity Maps
(9MB)**OPERATING MINES**

Mine	Operator	Commodity
1. Copper Mountain	Copper Mountain Mining Corporation	Copper-Gold-Silver
2. Endako Mine	Thompson Creek Metals Company Inc.	Molybdenum
3. Gibraltar	Taseko Mines Ltd.	Copper-Molybdenum
4. Highland Valley Copper	Teck Highland Valley Copper Partnership	Copper-Molybdenum
5. Huckleberry	Huckleberry Mines Ltd	Copper-Molybdenum-Gold-Silver
6. Mount Polley	Mount Polley Mining Corporation	Copper-Gold-Silver
7. Mt. Milligan	Thompson Creek Metals Company Inc.	Copper-Gold
8. New Afton	New Gold Inc.	Copper-Gold

PROPOSED MINES

Mine	Operator	Commodity
9. Red Chris	Red Chris Development Company Ltd	Copper-Gold
10. Ajax	KGHM Ajax Mining Inc.	Copper-Gold
11. Galore Creek	Galore Creek Mining Corporation	Copper-Gold
12. Kemess Underground	AuRico Gold Inc.	Copper-Gold-Silver
13. Kitsault	Avanti Mining Inc.	Molybdenum
14. KSM	Seabridge Gold Inc.	Copper-Gold
15. Morrison	Pacific Booker Minerals Inc.	Copper-Gold
16. New Prosperity	Taseko Mines Ltd.	Copper-Gold
17. Schaft Creek	Copper Fox Metals Inc.	Copper-Molybdenum-Gold

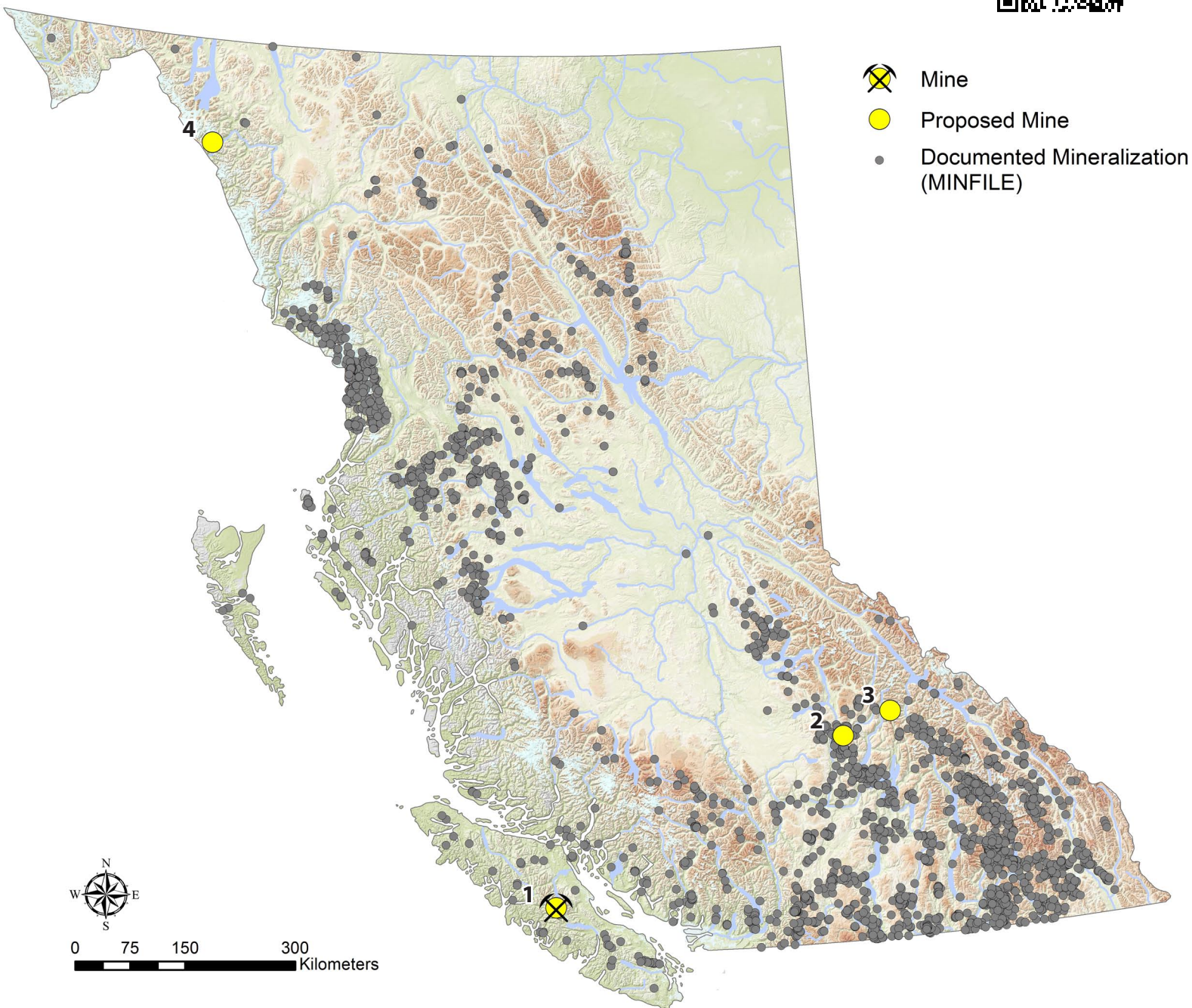
ZINC, COPPER, LEAD, SILVER & GOLD

Polymetallic deposits

British Columbia's geology hosts volcanogenic and sedex massive sulphide deposits that can contain multiple base and precious metals and are included in a category called polymetallic deposits.



Printable Commodity Maps
(9MB)



OPERATING MINES

Mine	Operator	Deposit Type/Commodity
1. Myra Falls	NVI Mining Ltd. (Nyrastar N.V.)	VMS/Zinc-Copper-Lead-Gold-Silver

PROPOSED MINES

Mine	Operator	Deposit Type/Commodity
2. Harper Creek	Yellowhead Mining Inc.	VMS/Copper-Gold-Silver
3. Ruddock Creek	Ruddock Creek Mining Corporation	Stratiform/Zinc-Lead-Silver
4. Tulsequah Chief	Chieftain Metals Ltd.	VMS/Copper-Zinc-Gold-Silver

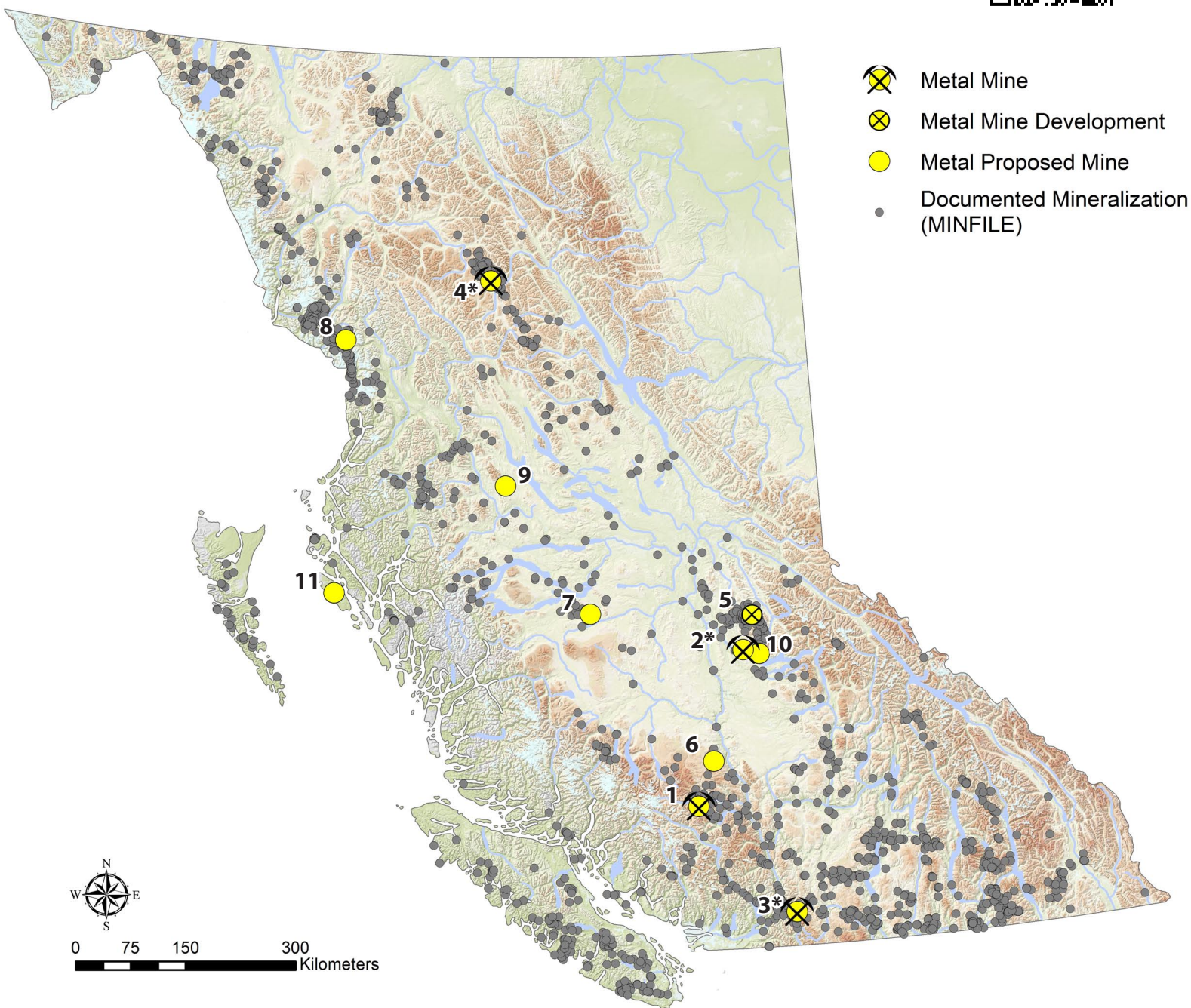
GOLD & SILVER

Precious metals deposits

Most gold and silver production in British Columbia is a co-product of base metal mining, however smaller high-grade deposits are numerous. Precious metals are commonly sought in polymetallic deposits.



Printable Commodity Maps
(9MB)



OPERATING MINES

Mine	Operator	Deposit Type/Commodity
1. Bralorne	Bralorne Gold Mines Ltd.	Vein/Gold
2. QR*	Barkerville Gold Mines Ltd.	Skarn/Gold
3. Treasure Mountain*	Huldra Silver Inc.	Vein/Silver-Lead
4. Shasta Mine*	Sable Resources Corporation	Vein/Gold-Silver

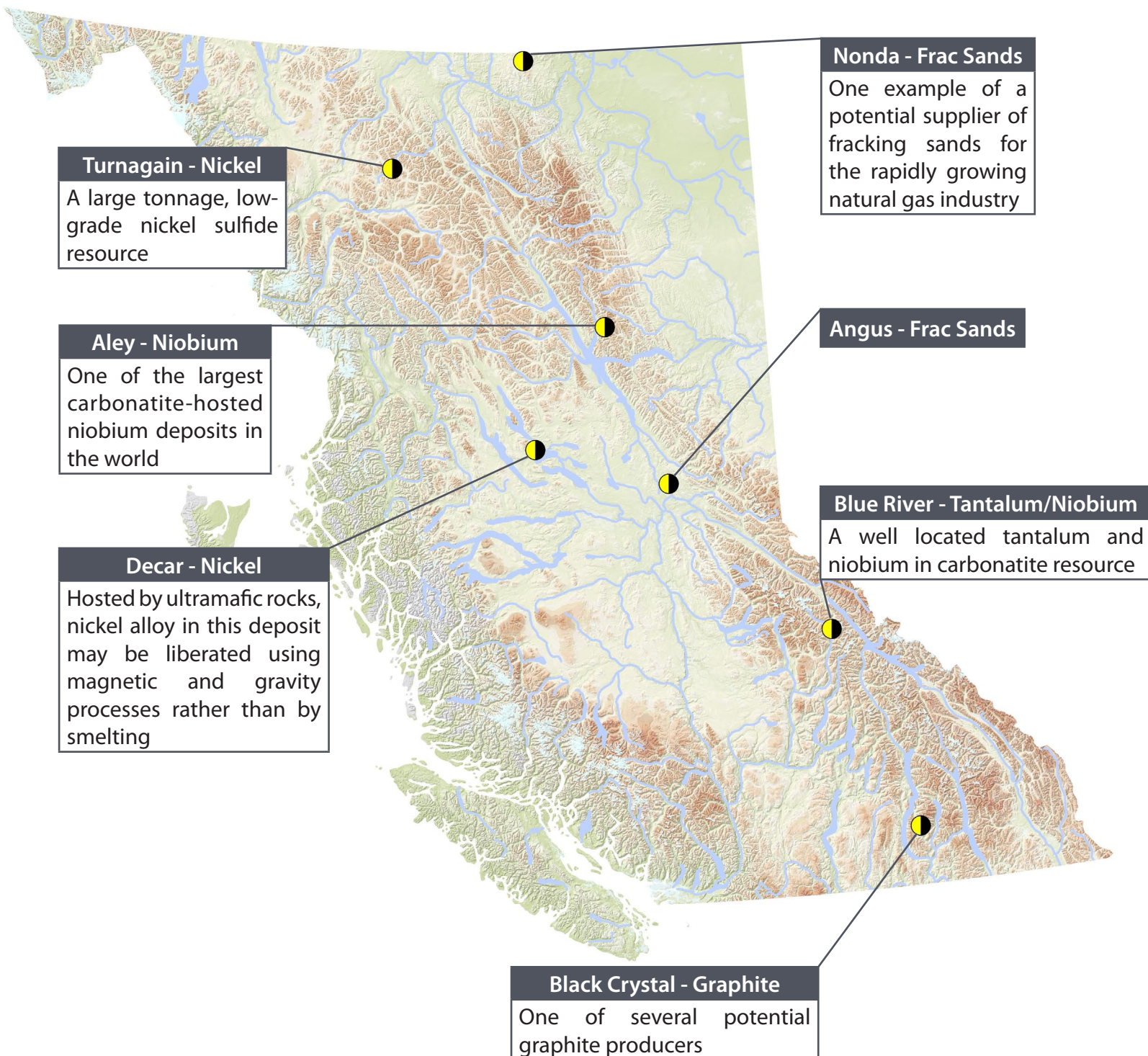
* denotes intermittent operation

PROPOSED MINES

Mine	Operator	Deposit Type/Commodity
5. Bonanza Ledge	Barkerville Gold Mines Ltd.	Vein/Gold
6. Blackdome	Sona Resources Corporation	Vein/Gold
7. Blackwater	New Gold Inc.	Epithermal/Gold-Silver
8. Brucejack	Pretium Resources Inc.	Vein/Gold-Silver
9. Dome Mountain	Metal Mountain Resources Inc.	Vein/Gold
10. Spanish Mountain	Spanish Mountain Gold Ltd.	Shale hosted/Gold-Silver
11. Yellow Giant	Banks Island Gold	Vein/Gold-Silver

EMERGING COMMODITIES

Responding to advances in technology, emerging markets or increased demand, a variety of specialized commodities are being explored for in the province. Unlike traditional mine products, exploiting these resources commonly requires adjusting to volatile markets and developing novel beneficiation processes.



ADDITIONAL COMMODITIES

INDUSTRIAL MINERALS



INDUSTRIAL MINERALS MINED IN BC

Barite
Basalt (construction, roofing granules, mineral wool)
Clay (cosmetic clay, fire clay, bentonite)
Dimension stone (granite, slate, facing stone)
Fuller's Earth (diatomite)
Graphite
Jade
Limestone, dolomite, marble, gypsum
Magnesite
Magnetite
Rhodonite
Sandstone (frac sand, silica)
Shale (high-alumina)
Volcanic rocks (e.g., pumice)

JADE



Scan for PDF of Jade
information circular
(4.5MB)



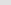
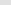
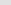
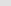
Interest in BC jade has increased significantly. Seasonal operations supply both raw and finished product.

AGGREGATES

Most aggregate (sand, gravel, crushed rock) is used locally. Some high quality aggregates are exported from large coastal operations.



Low-cost, reliable energy. Ninety-three per cent of BC's electricity needs are met by hydroelectricity, which gives BC one of the lowest electricity rates in North America. A robust transmission and distribution system delivers power across most of the province. Construction of the Northwest Transmission Line, in the northwest part of the province, is expected to be completed in 2014. The project includes a new 287-kilovolt line that will extend the current grid by 335 km and make power available to mine developments and will become an outlet for new energy development.

-  Mine Development
-  Proposed Mine
-  NTL Route
-  Major Roads



JAPAN	Kobe	Nagoya	Osaka	Tokyo	Yokohama		
Vancouver	11.4	11.0	11.4	10.7	10.6		
Prince Rupert	9.5	9.2	9.5	8.9	8.9		
KOREA	Incheon	Pusan					
Vancouver	10.5	12.8					
Prince Rupert	9.8	11.7					
CHINA	Dalian	Guangzhou	Hong Kong	Shanghai	Tianjin	Xiamen	Zhanjian
Vancouver	14.3	16.3	15.9	14.1	14.4	15.3	16.6
Prince Rupert	13.1	15.0	14.8	13.0	13.5	14.0	15.5
INDIA	Chennai	Kolkata	Mumbai	Visakhapatnam			
Vancouver	24.1	24.3	26.4	24.0			
Prince Rupert	22.9	23.1	25.3	22.4			



Deep-water port connections. The ports of Metro Vancouver and Prince Rupert are the closest ports to Asia from North America.

Port Metro Vancouver is Canada's largest and North America's most diversified port. It is the second closest North American port to China, Hong Kong, Japan, Korea, and Taiwan.

Port Metro Vancouver is home to two major coal export facilities: Westshore and Neptune Terminals. Westshore Terminals is Canada's largest coal terminal, which can be seen when flying into Vancouver from the west, and Neptune Terminals is located in Burrard Inlet in North Vancouver. Also in North Vancouver is Kinder Morgan Vancouver Wharves, which exports mineral concentrate.

The Port of Prince Rupert is the deepest natural harbour in North America and the closest west coast port to Asia. The port is home to Ridley Terminals, the largest coal export facility in northern BC which has recently expanded its coal handling capacity.

The Port of Stewart, is home to Stewart Bulk Terminals, a mineral concentrate facility capable of serving mines in northern BC. The port has land available to increase its storage space.

PORT FACILITY	MINE PRODUCT CAPACITY (WITH EXPANSIONS)
Westshore Terminals	33 Mt/year coal
Neptune Terminals	12.5 Mt/year coal
Kinder Morgan Vancouver Wharves	>1.15 Mt/year mineral concentrates
Ridley Terminals	24 Mt/year coal
Stewart Bulk Terminals	100,000 T/year mineral concentrates



PHYSICAL INFRASTRUCTURE

Rail Connections. Port Metro Vancouver and the Port of Prince Rupert are connected by railways to key markets in North America. Canadian National (CN), Canadian Pacific Railway (CPR) and Burlington Northern Santa Fe (BNSF) link with all major U.S. railways, offering transcontinental and double-track capability.

CN and CPR are the two main Canadian railway companies transporting coal to the coast. CN is the exclusive carrier to northern BC and brings most of the coal from this region to Ridley Terminals. CPR and CN also have routes in southern BC, and transport coal to Westshore and Neptune Terminals in Vancouver.

For more information on BC physical infrastructure, visit the Pacific Gateway website at www.pacificgateway.gov.bc.ca.

BC'S GLOBAL SERVICE INDUSTRY

Industry supported associations working as advocates for the mining industry

Consulting companies specializing in mine-related activities

Equipment and machinery support

Financial and legal firms providing local and international expertise

Geological and engineering services

Mining technology firms with specialization in sustainable practices

Mining software services and systems

Occupational health and safety standards and technology specialists

Undergraduate to graduate university programs

Research institutions



Smelting Capacity. Two smelter complexes operate in the province. At its Trail Operations in southern BC, Teck runs one of the largest fully-integrated zinc and lead smelting and refining complexes in the world. In addition to refined zinc and lead, the operation produces a variety of precious and specialty metals, chemicals, and fertilizers.

The Rio Tinto Alcan Primary Metal BC Operations, in the northwestern part of the province, produces primary aluminum for Pacific Rim customers.

Global Service Industry. British Columbia is home to a global service sector that provides expert services to the mining community. For more information, visit the Mining Suppliers Association of BC website www.miningsuppliersbc.ca.

BRITISH COLUMBIA GEOLOGICAL SURVEY

The British Columbia Geological Survey generates geoscience knowledge through field-based mapping, geochemical, geochronologic, tectonic, and metallogenic programs. It provides free access to raw data, historical information, and new concepts to guide geological, environmental, and mineral resource decisions. The Survey is responsible for assessing and archiving the provincial inventory of coal and mineral resources.

The British Columbia Geological Survey

- generates geoscience data
- serves as custodian for over a 100 years of geoscience data
- advises government
- provides confidential expertise
- monitors industry activity
- attracts global investments



MAPPLACE

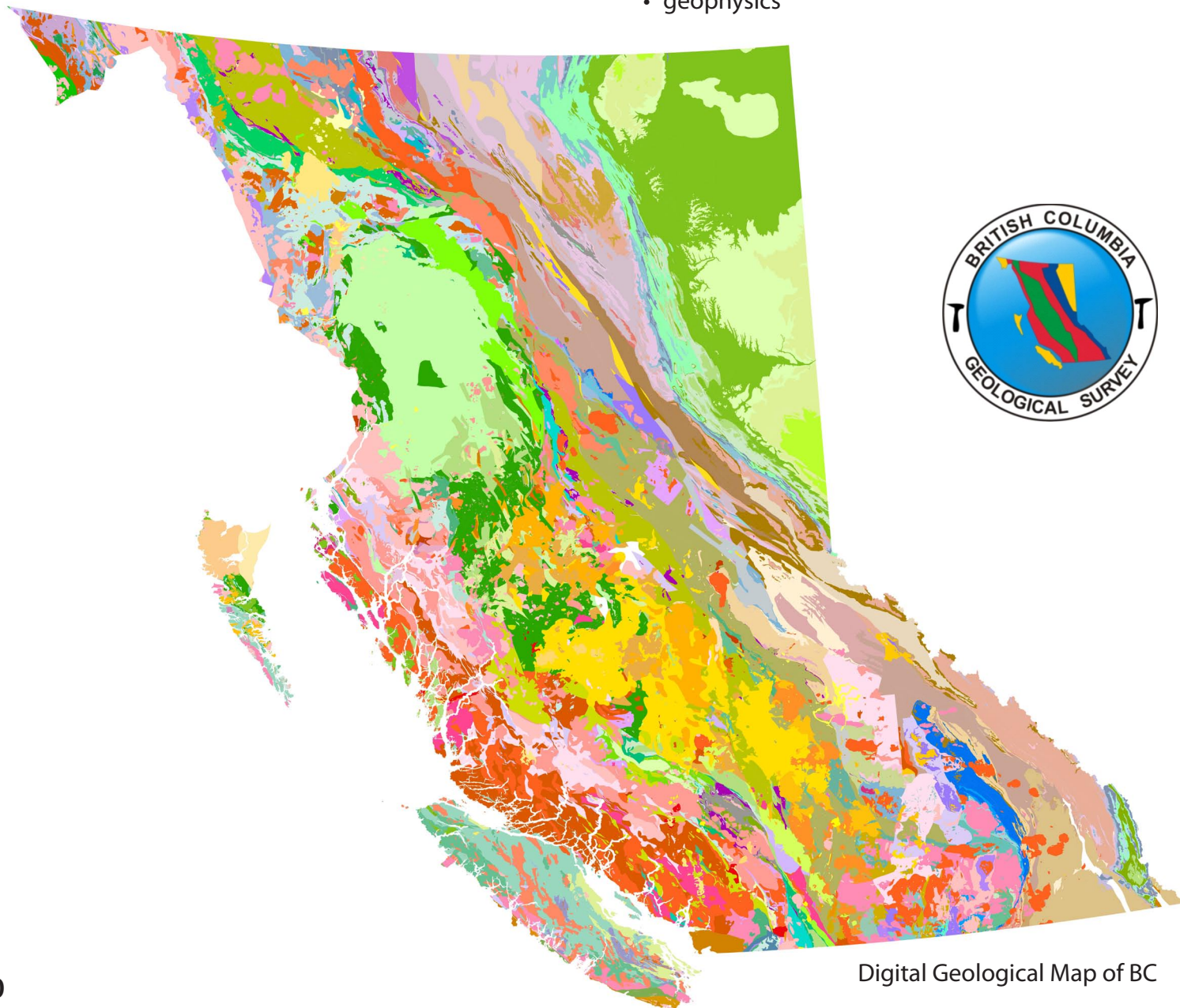
The **British Columbia Geological Survey** preserves, archives, and provides free web-based access to over a century of geoscience information. Since 1995, MapPlace, the Survey's database-driven web service has provided open geoscience data and custom map-making tools to aid evaluating mineral potential and discovering deposits.



www.mapplace.ca

Data available online:

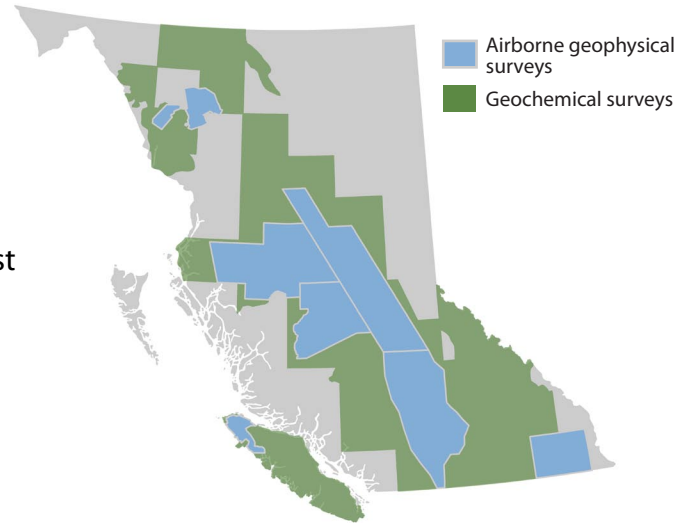
- geology
- mineral inventory (MINFILE)
- mineral assessment report (ARIS)
- coal assessment report (COALFILE)
- industry documents (Property File)
- geochemistry (RGS) and geological surveys
- mineral and coal tenures (MTO)
- geophysics



Geoscience BC is a non-profit, non-government, applied geoscience organization supported through investments from the Province of British Columbia.

Geoscience BC:

- attracts investment to BC
- industry focused
- independent and impartial
- generates and distributes publicly available geoscience data
- provides baseline information generated in partnership with First Nations, communities, governments and industry

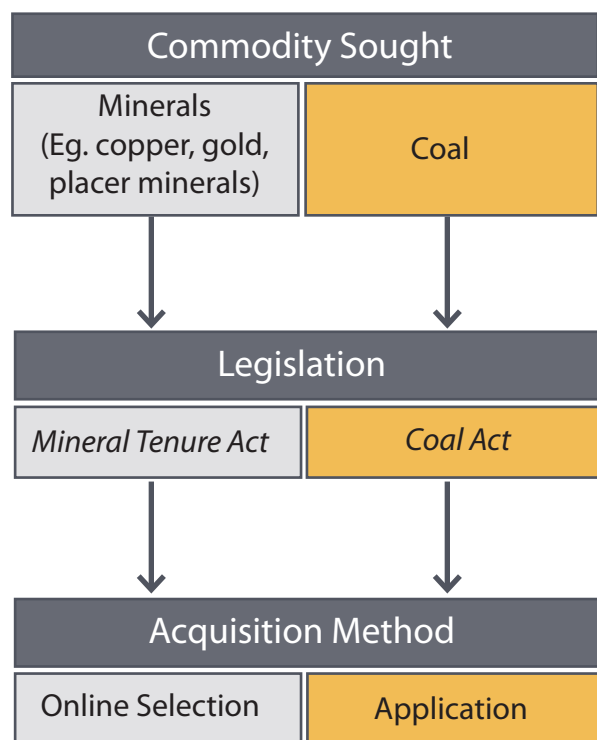


Geoscience BC's multidisciplinary minerals projects.

- BC is the only province in Canada that uses an organization such as Geoscience BC to assist in the delivery of public geosciences.
- Since founding Geoscience BC in 2005, government has provided nearly \$50 million in funding.
- This commitment to public geoscience was recently reconfirmed with the investment of a further \$3 million dollars to help fund the work done by Geoscience BC.



TENURE ACQUISITION



Minerals and coal disposition in British Columbia is managed by the provincial government. Individuals and corporations can acquire the rights to explore and develop these resources through the *Mineral Tenure Act* and the *Coal Act*.

The *Mineral Tenure Act* is the legislation under which mineral and placer tenures are established. Through the Mineral Titles Online (MTO) system, a Free Miner (an eligible individual or corporation) can register tenure over the mineral rights in an area. This on-demand system benefits those applying new exploration concepts or searching areas of unrecognised mineral potential. After the online acquisition is completed, non-mechanized exploration activities are permitted. Any mechanized activity requires a *Mines Act* permit.

Foreign interests wishing to acquire mineral tenure in British Columbia must first obtain a Free Miner Certificate, or engage an agent to act on their behalf.

The *Coal Act* is the legislation under which coal tenures are established. Unlike mineral tenures, acquisition is initiated by application. A Free Miner Certificate is not required to acquire a licence. An application for a coal licence is made to the Minister of Energy and Mines and must be accompanied by: the prescribed application fee; the prescribed rent in respect of location; and a plan and description of the location under Section 11 of the *Coal Act*. The Ministry then adjudicates the application, including consultation with potentially affected interests and communities.

Mineral and coal tenures acquired under the Acts grant sufficient rights for the exploration stages of a project. The tenure holder is generally able to acquire all related permits necessary for exploration based on their active tenure. Before minerals or coal can be produced, a tenure must be formally converted to a lease.



Mineral Titles Online (MTO) allows mining clients to acquire and maintain mineral titles by selecting areas on a digital map of British Columbia and by paying fees electronically. MTO establishes a fair and orderly system for allocating rights and provides secure tenure for all titles.



www.mtonline.gov.bc.ca

Mineral Titles Online Features

Access mineral titles data for current title status.

Search for tenure on an interactive map and print or save title maps.

View claims in relation to other land interests and resource data.

Manage tenure filing, maintenance work, transfer of ownership, and payments.

Renew Free Miners Certificates (FMC).

To use MTO you need to have the following:

- Business BCeID (BC electronic identification) registration (free of charge from www.bceid.ca)
- An email address
- Ability to pay electronically with Visa, American Express or MasterCard (cash or cheque payments received at Service BC, FrontCounter BC and Mineral Titles offices)
- A valid Free Miner Certificate. Individual, corporate, and partnership applications are available at: www.frontcounterbc.gov.bc.ca/ and www.servicebc.gov.bc.ca

PERMITTING MINES IN BC

British Columbia is committed to efficient and timely reviews of projects using well defined processes. The processes are the same for everyone local or international. Exploration permit applications are typically completed by internal staff, whereas most companies engage consultants to prepare mine proposals for assessment.

The senior legislation governing mine activities is the *Mines Act*, although other legislation may apply to projects to meet regulatory requirements. At an exploration stage, permits are not required for low-impact activities such as geological and geochemical surveys or trenching by hand. When disturbance of lands by mechanical means are proposed, the submission of a Notice of Work is required to attain a permit. This process enables most stages of exploration up to a decision to develop a mine.

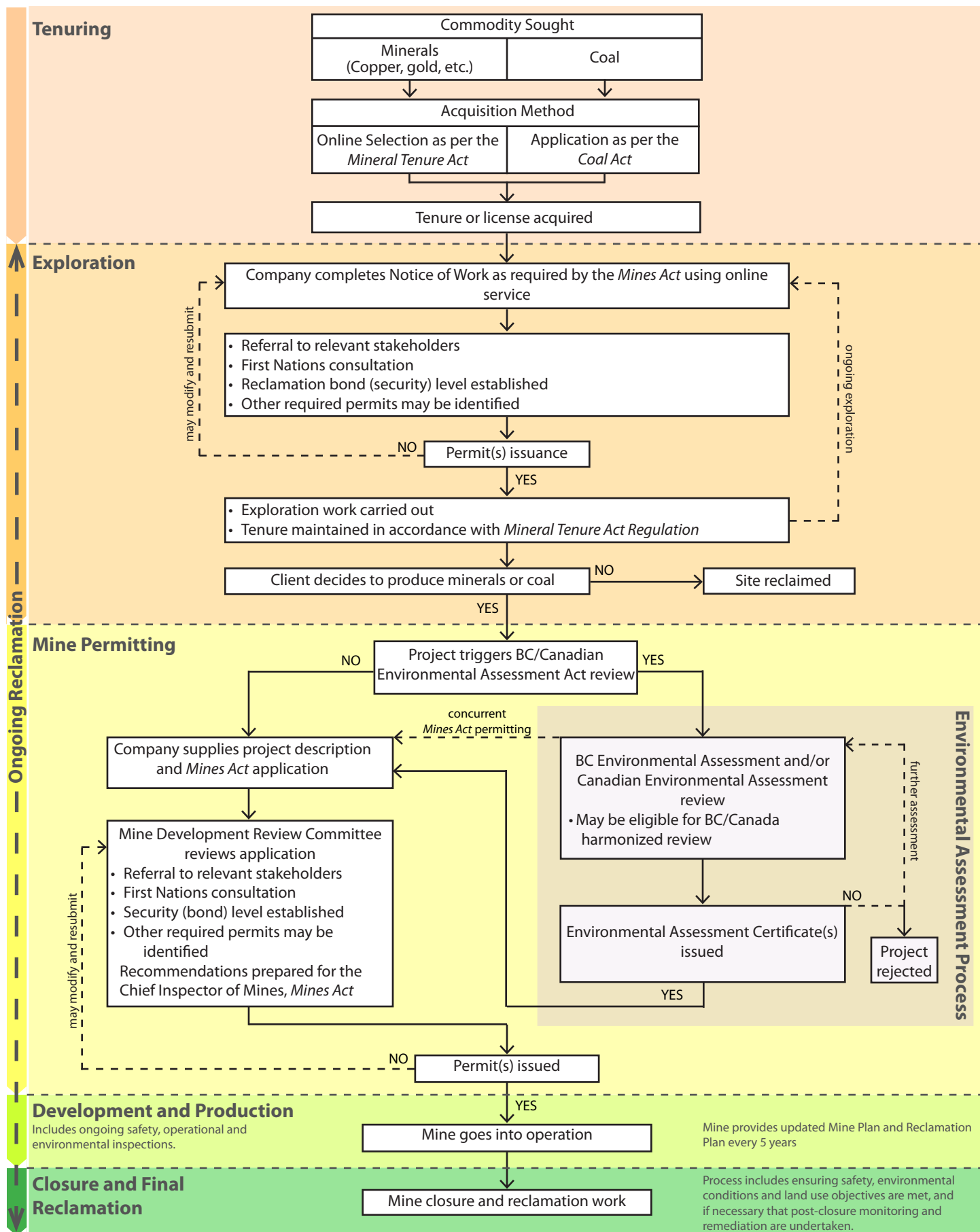
When a company decides to develop a mine, it enters into more detailed review processes. Threshold levels for environmental impact and production, as set out in *British Columbia Environmental Assessment Act Reviewable Projects Regulation*, determine which process a project is reviewed under.

Mine proposals that are below the established threshold levels may be reviewed by a regional committee as defined in the *Mines Act*. Such projects may include former mine sites, quarries, small tonnage deposits, and small coal operations.

Mine proposals that exceed the threshold levels are reviewed within a process outlined in the *British Columbia Environmental Assessment Act*. Detailed information can be found at the website www.eao.gov.bc.ca. An Environmental Assessment Certificate is issued for a project that satisfies the requirements of the process. In addition to the Certificate, a permit under the *Mines Act* is still required. A proponent may apply for both a certificate and permit concurrently.

Projects can also trigger a federal review process as set out in the *Canadian Environmental Assessment Act*. In an effort to harmonize the two processes, the provincial process may be substituted to create a "one project-one assessment" review.





This process applies mainly to the requirements under the *Mines Act* and *Health, Safety, and Reclamation Code for Mines in British Columbia* (Code). Other legislation, such as statutes and bylaws, may apply to the operation and the company may be required to obtain approvals, permits or otherwise comply with them.

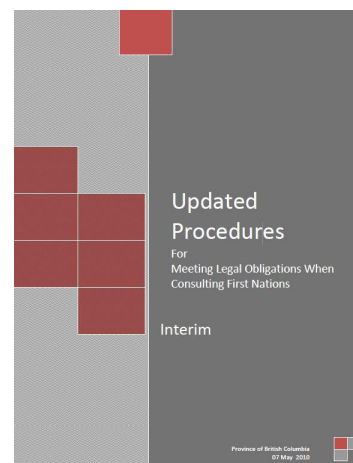
FIRST NATIONS CONSULTATION

The province is home to diverse First Nations (indigenous or aboriginal peoples) who have certain legal rights (aboriginal or treaty) that other British Columbians do not have. This shapes the provincial government's relationship with indigenous people: it is a government-to-government relationship where First Nations hold rights and are not merely stakeholders.

The province is taking four complementary approaches aimed at strengthening relationships, resolving aboriginal rights issues, and building sustainable First Nations economies.

Consulting First Nations, interim to resolution of the aboriginal rights question

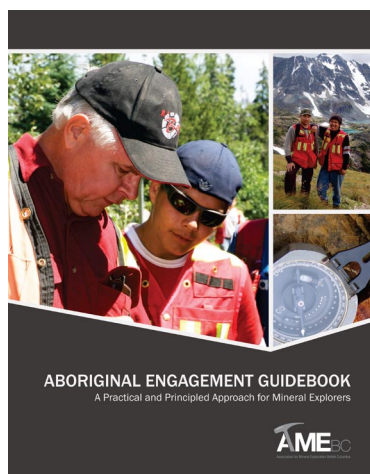
First Nations must be consulted about potential impacts of land and resources decisions to their rights. The province's approach to consulting First Nations is described in *Updated Procedures for Meeting Legal Obligations When Consulting First Nations*. Industry proponents can play an important role in supporting government consultation efforts because they are well placed to share this information about projects and modify plans to avoid impacts. Early engagement with First Nations, even before the government's consultation process, provides practical, timely, and cost-effective opportunities to address many potential issues.



Negotiating treaties for long term reconciliation of provincial and aboriginal interests

The province seeks treaties to create economic certainty over land and resources it manages and to improve the lives of First Nations. A treaty is a negotiated agreement that spells out the rights, responsibilities, and relationships of First Nations and the federal and provincial governments.

A significant part of resource development is building relationships and working with First Nations. Economic and Community Development Agreements underscore our government's commitment to help First Nations meaningfully participate in, and benefit from, resource activity happening within their traditional territory. British Columbia is the first province in Canada to share mineral tax revenue on new mines and major mine expansions. To date, ten of these agreements have been signed and some of the first cheques as a result of these agreements have already been delivered to First Nations in the province.



The Association for Mineral Exploration British Columbia (AME BC), with input and help from a number of external experts and practitioners, has prepared this Aboriginal Engagement Guidebook to be used as a practical tool for mineral explorers working in British Columbia.

Scan for PDF of Aboriginal
Engagement Guidebook
(2MB)



www.amebc.ca/resources-and-publications/publications/current.aspx

Negotiating agreements interim to resolution of the aboriginal rights question

Government negotiates a range of agreements that contribute to a working relationship with First Nations in the short term and outside of the formal treaty process. Some types of agreements include reconciliation, strategic engagement, economic and community development, forest consultation and revenue sharing, and economic benefit sharing agreements.

Improving socio-economic conditions of First Nations communities

Through various programs and initiatives, the province works with Canada and First Nations organizations to address priorities such as health, education, housing and infrastructure, and economic development.

Companies looking for investment and growth opportunities in British Columbia have important relationships to consider building as well. These include supporting of the Crown's consultation process, and considering business partnerships or opportunities with First Nations.



Government's Consultation Approach

www.gov.bc.ca/arr/consultation/

Treaty Negotiations

(Ministry of Aboriginal Relations and Reconciliation)

www.gov.bc.ca/arr/treaty/negotiating/

BC Treaty Commission

www.bctreaty.net

Key Agreements: Land and Resources

(Ministry of Aboriginal Relations and Reconciliation)

www.gov.bc.ca/arr/treaty/key/

Social Initiatives

(Ministry of Aboriginal Relations and Reconciliation)

www.gov.bc.ca/arr/social/

TAXATION OF MINE OPERATIONS

Mine taxation can be complex and due diligence for any proposed investment should include consultation with a qualified tax professional. The following describes some common taxes assessable on British Columbia mining operations.

CANADA-BC SYSTEM OF MINE TAXATION (IN EFFECT AT DECEMBER 1, 2013)		
	Specific tax	Effective tax paid
Federal income tax on a mining operations taxable income (eg. less deductions for operating expenses, depreciation on capital assets, deduction of exploration and pre-production development costs)	15%	Harmonized Canada-BC income tax rate of 26%
Provincial income tax on a mining operations taxable income (similar to Federal taxable income)	11%	
Provincial mineral tax	2% Net current proceeds (form of minimum tax)	A Cumulative Expenditure Account determines when an operation must begin paying the 13% Net Revenue tax (typically when capital costs have been fully recovered)
	13% Net revenue (less the Net current proceeds tax)	

www.pwc.com/ca/canminingtax

Canadian mining taxation

Guidance from the industry leaders on the complexities of mining taxation in Canada. Covers all project stages—from exploration to production—to help you manage your tax risks. 2013

pwc

OTHER TAXES

BC Sales Tax

User Fees

Motor Fuel Tax

Carbon Tax

Property Taxes

Payroll Taxes

Canada Goods and Services Tax



Scan for PDF of Canadian Mining Taxation document (840KB)

The Canadian Mining Taxation publication produced by PriceWaterhouseCoopers is a good general reference.
www.pwc.com/ca/en/mining/canadian-mining-taxation.jhtml

INVESTMENT INCENTIVES

To maintain an internationally competitive exploration and mining industry, federal and provincial governments offer a variety of incentives

- to allow mine builders to recover much of their investment before paying taxes
- to assess taxes on net operational profits
- to permit operating mines flexibility on tax payments in cyclical times
- to allow companies to flow-through tax benefits from mineral exploration benefits to share holders
- to encourage exploration, discovery and research through tax relief

INVESTMENT INCENTIVES

International Business Activity Tax Refund

BC Mining Exploration Tax Credit

Canada Mineral Exploration Tax Credit

BC Mining Flow-Through Share Tax Credit

Investment Tax Credit for Development Expenses

Canadian Exploration Expenses

Canadian Development Expenses

Capital Cost Allowance

BC Cumulative Expenditure Account

New Mine Allowance



The Provincial Nominee Program (PNP) is an immigration program that allows BC to select and nominate for permanent residence individuals who meet BC's selection criteria.

PROVINCIAL NOMINEE PROGRAM (PNP)

Provincial nominees and their dependents receive expedited processing of their permanent resident visa applications.

A skills immigration stream helps employers attract and retain qualified foreign workers who have the skills and experience to contribute to BC's economy.

A business immigration stream attracts experienced entrepreneurs who are ready to invest in our economy and create jobs for Canadian citizens and permanent residents.

For more information, please visit: www.WelcomeBC.ca/PNP

SKILLS TRAINING & WORKFORCE DEVELOPMENT

According to the provincially funded BC Mining HR Task Force's report *British Columbia Hiring Requirements and Available Talent Forecasts*, it is projected that the mining sector will have 16,700 direct job openings from 2012 to 2022.

The mining industry will need skilled workers in several key occupations, including machinery and transportation equipment mechanics, primary production workers and vehicle drivers.

The Province is investing more than \$1.8 million to support the Mineral Exploration and Mining Industry Labour Shortage Task Force that was originally formed by industry stakeholders in 2008. The task force coordinates, develops and implements workforce measures to ensure the mining industry in B.C. has the human resources needed to support the growth and sustainability of the sector. The three-year project includes an update of the 2008 labour market demand projections, and will identify industry-specific training, educational and promotional needs required to keep pace with a growing industry facing a shortage of skilled workers. The project has a strong focus on youth and under-represented sectors of society such as women, aboriginal people and new Canadians. The Mining HR Task Force is also conducting an underground miner occupational analysis and skills development review, and research to develop a strategic approach to recruiting and retaining immigrants in the sector.

BC Aboriginal Mentoring and Training Association

www.amta-bc.com/

BC Mining HR Task Force

www.acareerinminingbc.ca/

A variety of public colleges also offer training either directly or indirectly related to the mining sector:

- Northwest Community College's Smithers-based School of Exploration and Mining is a leader in mining-related training, offering a wide variety of training, working in partnership with industry.

www.nwcc.bc.ca/programs-courses/nwcc-schools/school-exploration-mining

- Under the Mining Apprenticeship Program, the College of the Rockies seeks to increase the number of Apprentices in Heavy Duty Mechanics, Welding, Electrical and Millwright/Machinist Trades (starting initially with Heavy Duty Mechanics and has now expanded to include Electrical). The College has secured a variety of Apprenticeship work experience placements with the Industry Partners. The College will sponsor and supervise the Apprentices and program, and provide the technical training.

www.cotr.bc.ca/map/

- North Island College offers an underground mining program, through which students gain the fundamental skills, from safety protocols and geology to modern mining techniques that are needed for entry level employment in mining. The program allows students to meet regional employers in the mining sector and key individuals recruiting for jobs across the North Island.

www.nic.bc.ca/program/underground_mining_essentials_certificate



EXPLORING OPPORTUNITIES



British Columbia welcomes investors to explore opportunities in its mineral and coal industry.

Exploration, mining companies, and investors have opportunities to

- undertake new exploration
- provide venture capital
- become a partner or purchase a property
- invest in British Columbia minerals through market purchases

EXPLORING OPPORTUNITIES

Review extensive information online.

Investigate company activities.

Acquire mining and exploration publications.

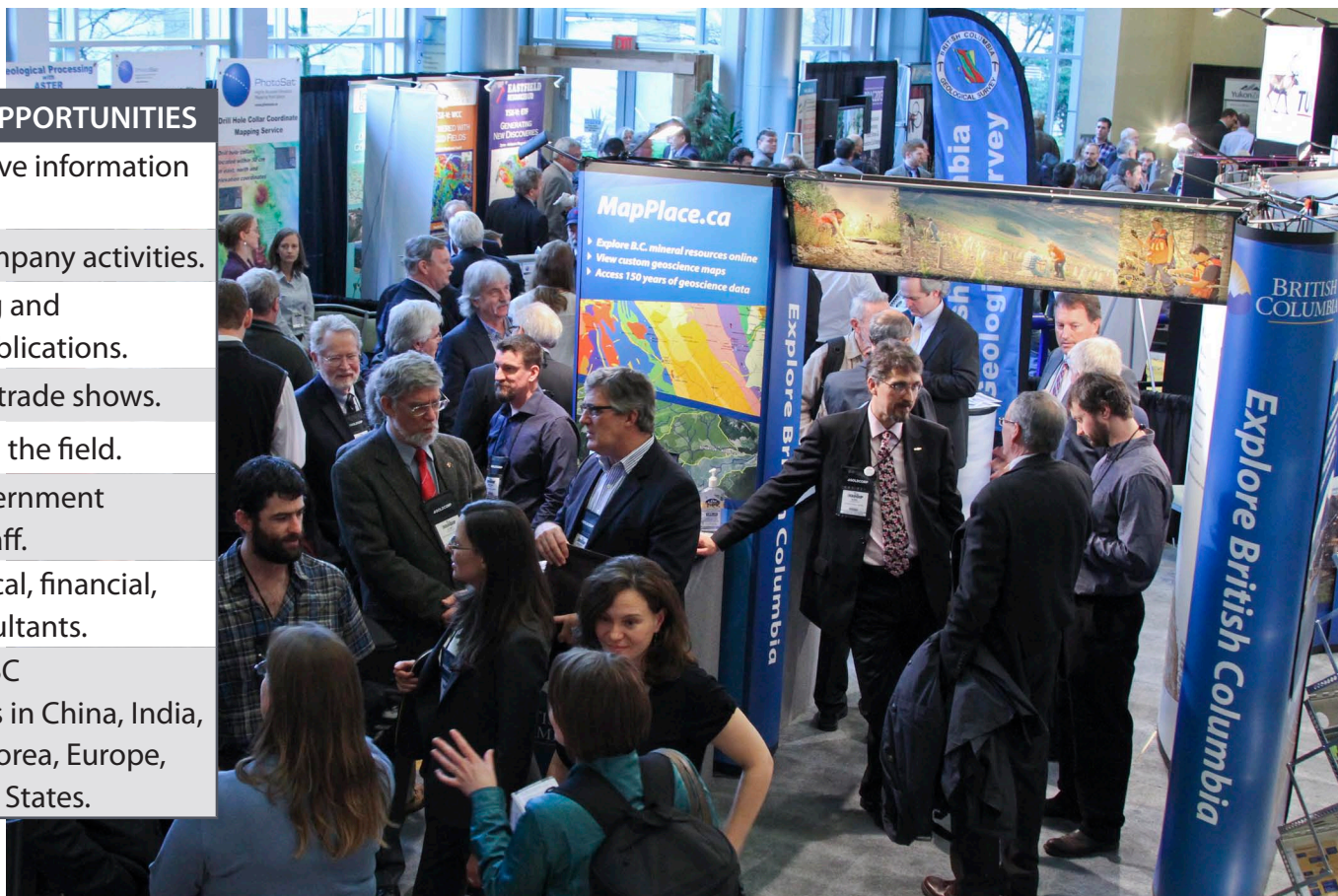
Attend annual trade shows.

Visit projects in the field.

Meet with government officials and staff.

Engage technical, financial, and legal consultants.

Connect with BC representatives in China, India, Japan, South Korea, Europe, and the United States.



Make connections with the province's exploration industry at trade shows such as the Mineral Exploration Roundup conference hosted by the Association for Mineral Exploration British Columbia (AMEBC) each January in Vancouver, and the annual Propsectors and Developers Association of Canada (PDAC) meeting in Toronto.

DETAILED INFORMATION



The British Columbia Geological Survey publishes annual volumes that summarize ongoing research, mining, and exploration in the province

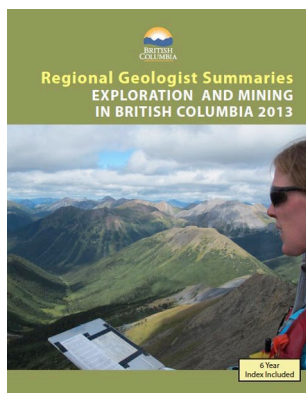
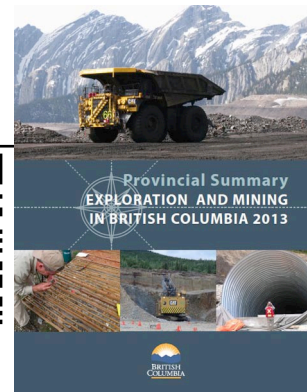
Provincial Summary - Exploration and Mining in British Columbia

An overview of exploration and mining across the province.

www.em.gov.bc.ca/Mining/Geoscience/PublicationsCatalogue/MineralExplorationReview/



3.4MB



Regional Geologist Summaries' Exploration and Mining in British Columbia



10.2MB

More detailed regional information about mineral exploration, developments, projects, mines and quarries, and outlook for the upcoming year.

www.em.gov.bc.ca/Mining/Geoscience/PublicationsCatalogue/ExplorationinBC/Pages/default.aspx

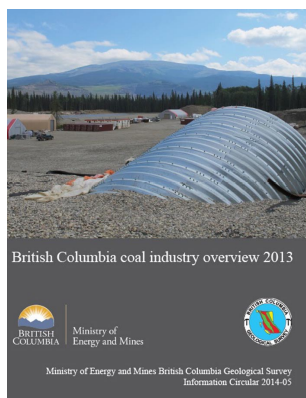
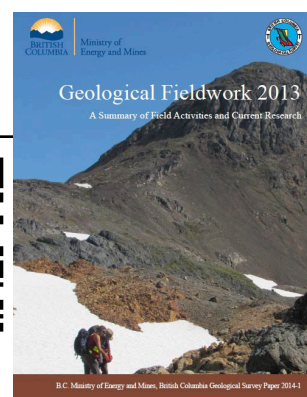
Geological Fieldwork

A collection of peer-reviewed papers summarizing current research by the British Columbia Geological Survey.

www.em.gov.bc.ca/Mining/Geoscience/PublicationsCatalogue/Fieldwork/



28.3MB



British Columbia Coal Industry Overview



12.0MB

This publication provides an overview of the coal industry. It includes a section on current tenures in key coal fields, acquisition processes, and sources of information.

www.em.gov.bc.ca/Mining/Geoscience/PublicationsCatalogue/InformationCirculars/Pages/IC2014-5.aspx

GOVERNMENT CONTACTS



BC Mineral Development Office
British Columbia Geological Survey
Ministry of Energy and Mines
Suite 300 - 865 Hornby Street
Vancouver, British Columbia V6Z 2G3
Canada

1 604 660 3332

Ministry of International Trade
Suite 730 - 999 Canada Place
Vancouver, British Columbia V6C 3E1
Canada

1 604 775 2201

Asia-Pacific Business Centre
Robson Square
Suite 288 - 800 Hornby Street
Vancouver, British Columbia V6Z 2C5
Canada

Toll-free: 1-888-880-ASIA(2742)

Canadian Trade Commissioner Service

SOUTH KOREA

Seoul (82-2) 3783-6000 seoul-td@international.gc.ca

JAPAN

Tokyo (011-81-3) 5412-6200 jpn.commerce@international.gc.ca

Osaka +81-6-6943-1212

CHINA

Beijing (011-86-10) 5139-4000

Shanghai (011-86-21) 3279-2800

Guangzhou (011-86-20) 8611-6100 infocentrechina@international.gc.ca

Hong Kong (011-852) 2847-7414

Chongqing (011-86-23) 6373-8007

INDIA

New Delhi +91-11-4178-2000

Mumbai +91-22-6749-4444

Kolkata +91-33-2335-4010 & 4011 india.commerce@international.gc.ca

Chennai +91-44-7100-0201

SINGAPORE

Singapore (011-65) 6854-5900 spore-td@international.gc.ca

UNITED KINGDOM

London (011-44-20) 7258-6600 ldn-td@international.gc.ca

USA

Pal Alto (650) 543-8800 paltog@international.gc.ca

New York (212) 596-1650 cngny-td@international.gc.ca

BC Trade and Investment Office

SOUTH KOREA

Seoul +82 (2) 2008-4950

JAPAN

Tokyo +81 (3) 3216-7180

CHINA

Beijing +86 (10) 5811-1900

Shanghai +86 (21) 5116-6860

Guangzhou +86 (20) 2831-7410

Hong Kong (852) 2168-0703

INDIA

Bangalore +91 80 41161216 / 40933650

Mumbai +91 22 49224600

Chandigarh +91 172 505 0439

UNITED KINGDOM

London + 44 (0) 203 195 1176

USA

Palo Alto (408) 858-9303

ADDITIONAL WEB LINKS

For more information about exploration, mining, and investment opportunities, please see the following:

British Columbia Geological Survey

Homepage www.empr.gov.bc.ca/mining/geoscience/pages/default.aspx

MapPlace www.MapPlace.ca

MINFILE www.empr.gov.bc.ca/Mining/Geoscience/minfile/Pages/default.aspx

Other British Columbia Government Sites

B.C. Ministry of Forests, Lands and Natural Resource Operations www.gov.bc.ca/for

B.C. Mineral Exploration and Mining www.empr.gov.bc.ca/Mining

B.C. Minerals Economy Statistics www.empr.gov.bc.ca/Mining/MineralStatistics

B.C. Minerals Geoscience www.empr.gov.bc.ca/Mining/Geoscience

Mineral Titles www.MineralTitles.gov.bc.ca

B.C. Environmental Assessment Office www.eao.gov.bc.ca

B.C. Ministry of Jobs, Tourism and Skills Training www.gov.bc.ca/JTST

B.C. Ministry of Environment www.gov.bc.ca/env

B.C. Ministry of Finance www.gov.bc.ca/fin/

Government of British Columbia www.gov.bc.ca

Invest British Columbia <http://trade.britishcolumbia.ca/Invest/>

British Columbia Associations

Association for Mineral Exploration of British Columbia www.amebc.ca

Mining Association of British Columbia www.mining.bc.ca

British Columbia Stone, Sand & Gravel Association www.gravelbc.ca

Investment Sites

British Columbia Securities Commission www.bcsc.bc.ca

The System for Electronic Document Analysis and Retrieval (SEDAR) www.sedar.com

Toronto Stock Exchange (TSX) www.tmx.com

Other Groups

Coal Association of Canada www.coal.ca

Department of Foreign Affairs and International Trade Canada www.international.gc.ca

Geological Survey of Canada www.nrcan.gc.ca/earth-sciences

Geoscience BC www.geosciencebc.com

Invest in Canada www.international.gc.ca/investors-investisseurs/index.aspx?lang=eng

Mining Association of Canada www.mining.ca

Natural Resources Canada (NRCAN) www.nrcan.gc.ca

Prospectors and Developers Association of Canada www.pdac.ca

CONTRIBUTING PARTNERS



Government of British Columbia
www.gov.bc.ca

The Mineral Development Office of the British Columbia Geological Survey (British Columbia Ministry of Energy and Mines) coordinated the creation of this document with significant input from several Ministries including; International Trade; Jobs, Tourism and Skills Training; Transportation and Infrastructure; Forests, Land and Natural Resource Operations; and Aboriginal Relations and Reconciliation.

Geoscience BC
www.geosciencebc.com

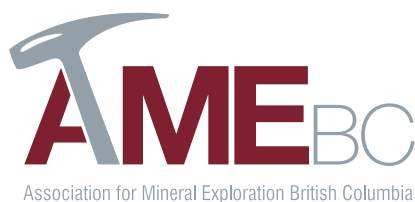
Geoscience BC is an industry-led, industry-focused, applied geosciences organization, created in 2005 with a \$25 million grant from the Province of British Columbia. Geoscience BC encourages mineral and oil and gas exploration investment in BC through the delivery of publicly available, applied geoscience. It works in partnership with industry, academia, government, First Nations, and communities to identify and fund applied geoscience projects.

The Association for Mineral Exploration British Columbia (AME BC)
www.amebc.ca

The Association for Mineral Exploration British Columbia (AME BC) is the predominant voice of mineral exploration and development in British Columbia. Established in 1912, AME BC represents over 4,800 members including geoscientists, prospectors, engineers, entrepreneurs, exploration companies, suppliers, mineral producers, and associations engaged in mineral exploration and mine development in BC and throughout the world.

Mining Association of British Columbia (MABC)
www.mining.bc.ca

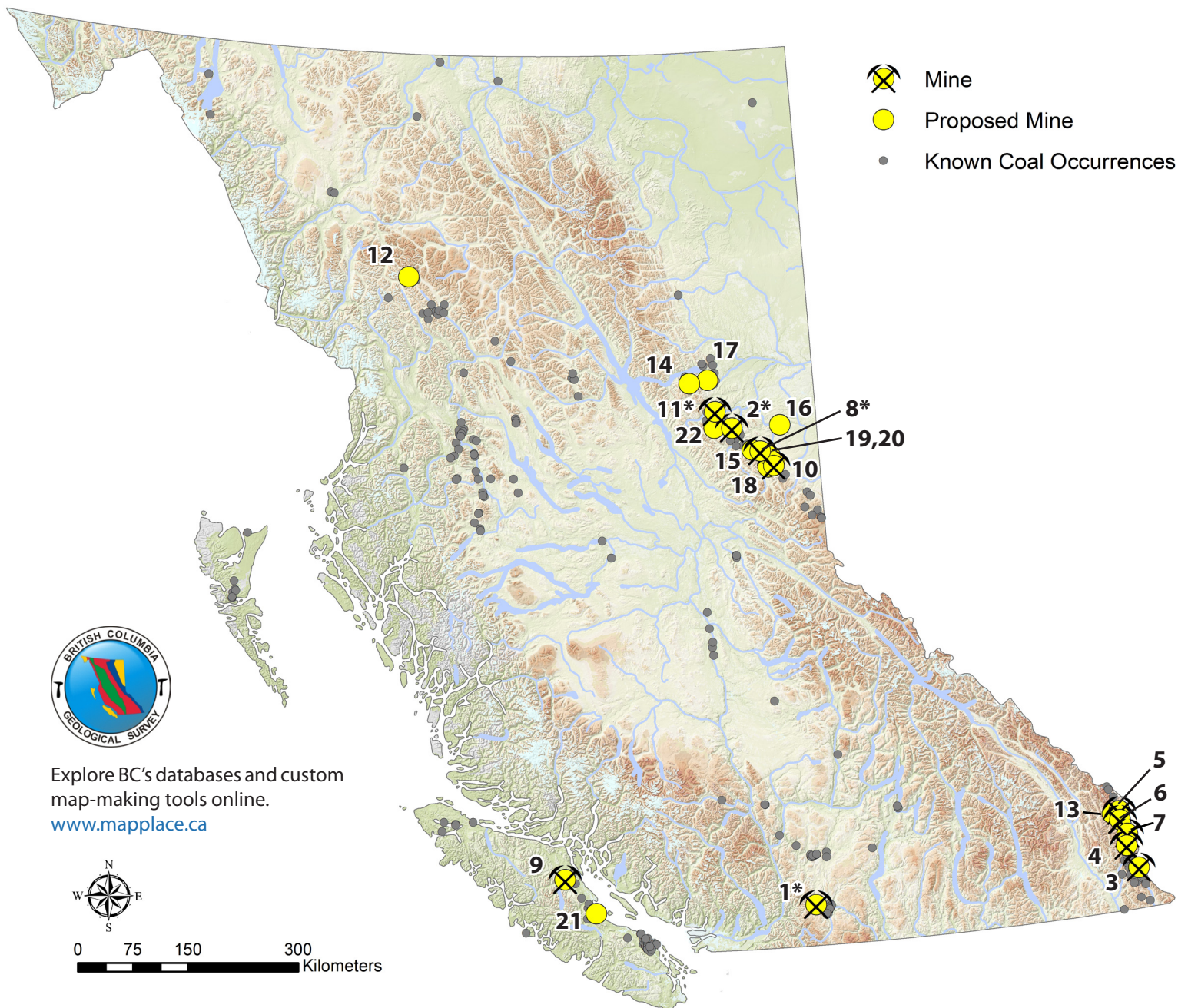
Established through an act of the BC Legislature in 1901 to represent the interests of BC's mining industry, the Mining Association of British Columbia (MABC) is one of the oldest industry associations in the province. MABC represents the collective needs and interests of operating coal, metal and industrial mineral mining companies and the Province's two smelters.



www.empr.gov.bc.ca/Mining



COAL



OPERATING MINES

Mine	Operator	Commodity
1. Basin*	Coalmont Energy Corp.	Thermal
2. Brule*	Walter Energy, Inc.	PCI Coal
3. Coal Mountain	Teck Coal Limited	PCI and Thermal Coal
4. Elkview	Teck Coal Limited	HCC
5. Fording River	Teck Coal Limited	HCC and Thermal Coal
6. Greenhills	Teck Coal Limited	HCC, PCI and Thermal Coal
7. Line Creek	Teck Coal Limited	HCC, PCI and Thermal Coal
8. Perry Creek*	Walter Energy, Inc.	HCC
9. Quinsam	Quinsam Coal Corporation	Thermal Coal
10. Trend	Peace River Coal Inc.	HCC
11. Willow Creek*	Walter Energy, Inc.	HCC and PCI Coal

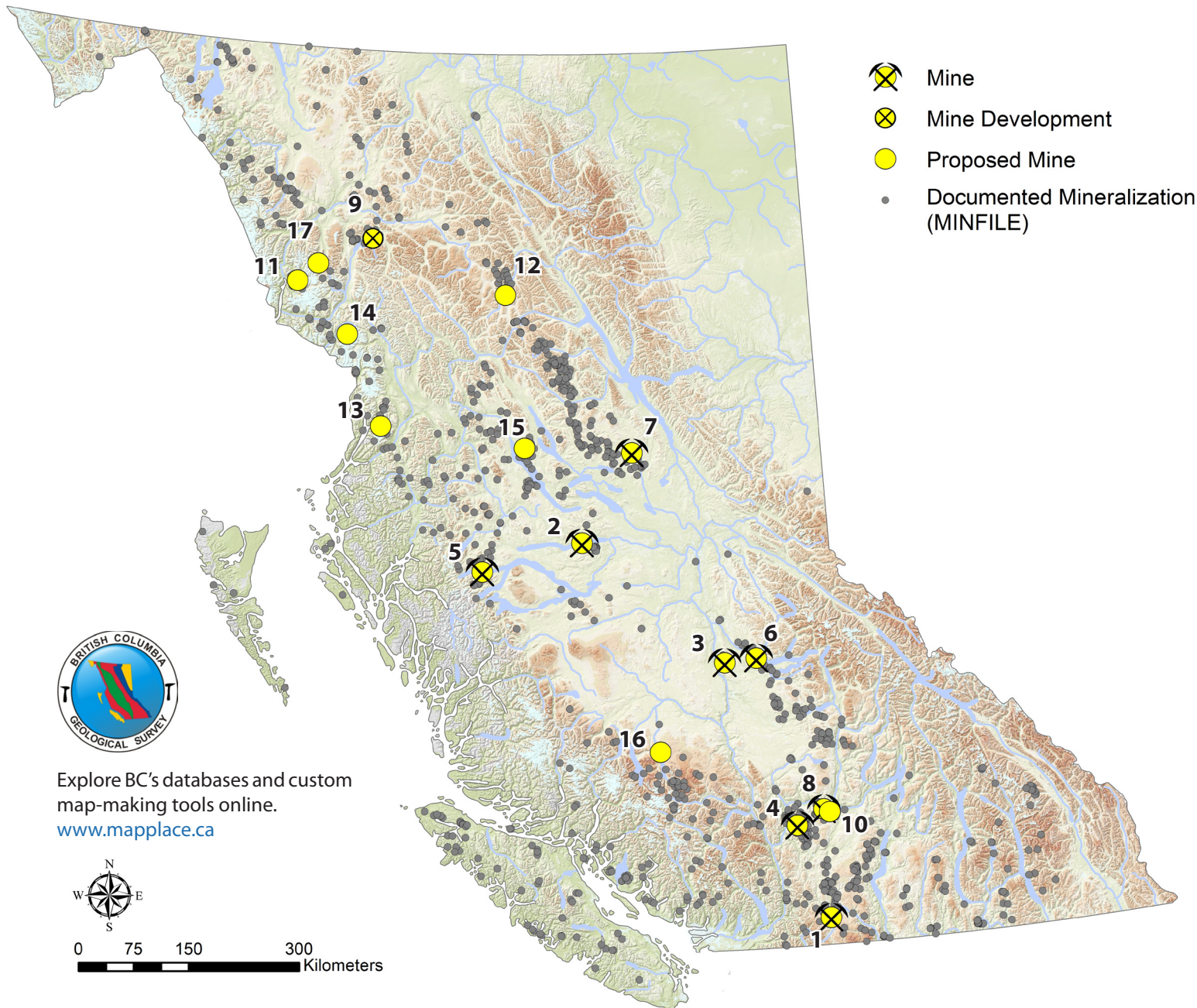
PROPOSED MINES

Mine	Operator	Commodity
12. Arctos Anthracite	Fortune Minerals Limited	Anthracite
13. Bingay Main	Centermount Coal Ltd.	MET
14. Carbon Creek	Cardero Resources Corp.	MET
15. EB	Walter Energy, Inc.	HCC
16. Echo Hill	Hillsborough Resources Ltd.	Thermal Coal
17. Gething Bri-Dowling	Canadian Kailuan Dehua Mines Co. Ltd.	HCC
18. Horizon Ridge	Anglo American Canada plc	MET
19. Murray River	HD Mining International Ltd.	MET
20. Quintette-Babcock	Teck Coal Limited	MET
21. Raven	Compliance Coal Corporation	MET
22. Sukunka	Glencore	MET

* denotes intermittent operation

COPPER, GOLD & MOLYBDENUM

Porphyry-related deposits



OPERATING MINES

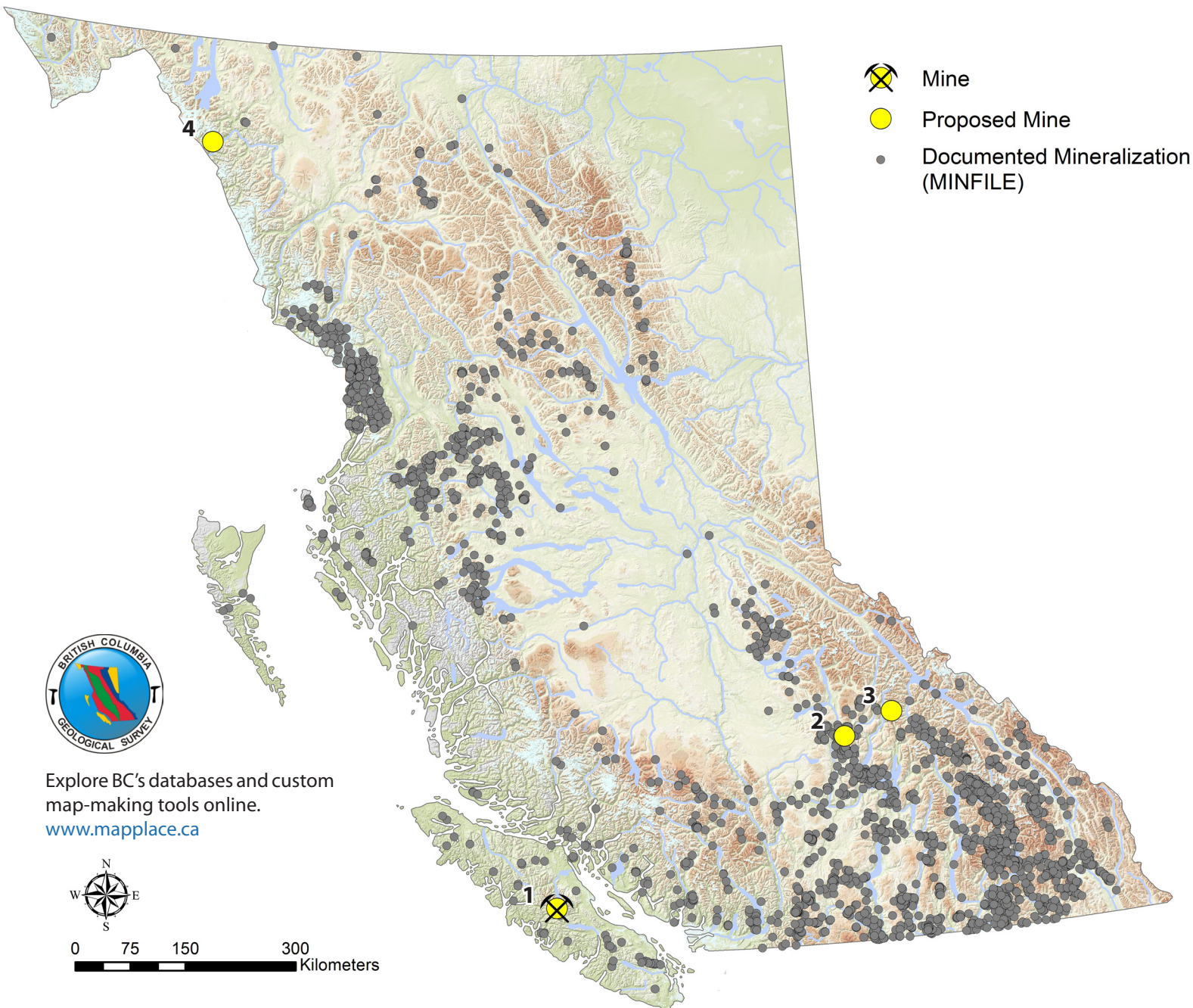
Mine	Operator	Commodity
1. Copper Mountain	Copper Mountain Mining Corporation	Copper-Gold-Silver
2. Endako Mine	Thompson Creek Metals Company Inc.	Molybdenum
3. Gibraltar	Taseko Mines Ltd.	Copper-Molybdenum
4. Highland Valley Copper	Teck Highland Valley Copper Partnership	Copper-Molybdenum
5. Huckleberry	Huckleberry Mines Ltd	Copper-Molybdenum-Gold-Silver
6. Mount Polley	Mount Polley Mining Corporation	Copper-Gold-Silver
7. Mt. Milligan	Thompson Creek Metals Company Inc.	Copper-Gold
8. New Afton	New Gold Inc.	Copper-Gold

PROPOSED MINES

Mine	Operator	Commodity
9. Red Chris	Red Chris Development Company Ltd	Copper-Gold
10. Ajax	KGHM Ajax Mining Inc.	Copper-Gold
11. Galore Creek	Galore Creek Mining Corporation	Copper-Gold
12. Kemess Underground	AuRico Gold Inc.	Copper-Gold-Silver
13. Kitsault	Avanti Mining Inc.	Molybdenum
14. KSM	Seabridge Gold Inc.	Copper-Gold
15. Morrison	Pacific Booker Minerals Inc.	Copper-Gold
16. New Prosperity	Taseko Mines Ltd.	Copper-Gold
17. Schaft Creek	Copper Fox Metals Inc.	Copper-Molybdenum-Gold

ZINC, COPPER, LEAD, SILVER & GOLD

Polymetallic deposits



OPERATING MINES

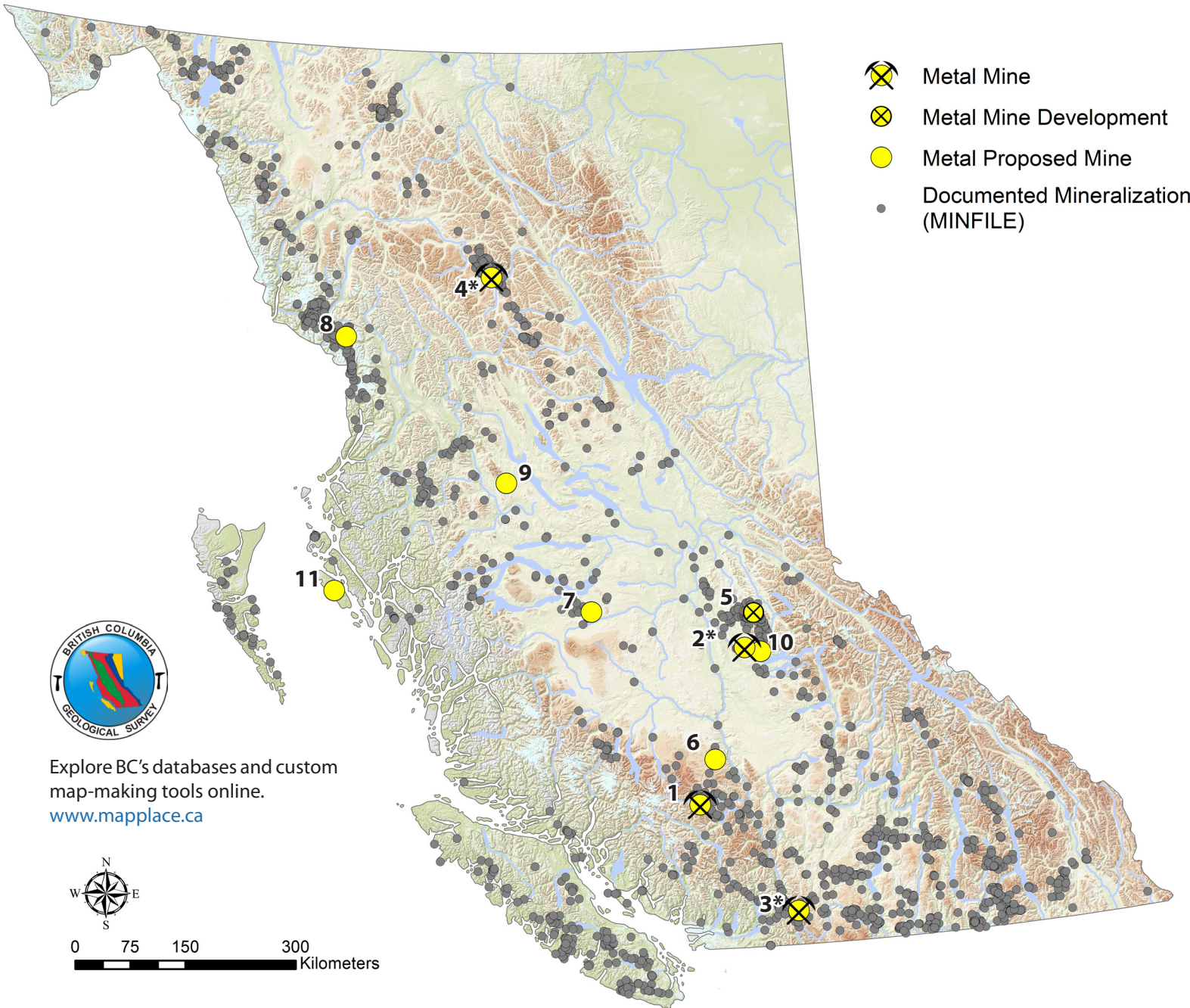
Mine	Operator	Deposit Type/Commodity
1. Myra Falls	NVI Mining Ltd. (Nytrastar N.V.)	VMS/Zinc-Copper-Lead-Gold-Silver

PROPOSED MINES

Mine	Operator	Deposit Type/Commodity
2. Harper Creek	Yellowhead Mining Inc.	VMS/Copper-Gold-Silver
3. Ruddock Creek	Ruddock Creek Mining Corporation	Stratiform/Zinc-Lead-Silver
4. Tulsequah Chief	Chieftain Metals Ltd.	VMS/Copper-Zinc-Gold-Silver

GOLD & SILVER

Precious metals deposits



OPERATING MINES

Mine	Operator	Deposit Type/Commodity
1. Bralorne	Bralorne Gold Mines Ltd.	Vein/Gold
2. QR*	Barkerville Gold Mines Ltd.	Skarn/Gold
3. Treasure Mountain*	Huldra Silver Inc.	Vein/Silver-Lead
4. Shasta Mine*	Sable Resources Corporation	Vein/Gold-Silver

* denotes intermittent operation

PROPOSED MINES

Mine	Operator	Deposit Type/Commodity
5. Bonanza Ledge	Barkerville Gold Mines Ltd.	Vein/Gold
6. Blackdome	Sona Resources Corporation	Vein/Gold
7. Blackwater	New Gold Inc.	Epithermal/Gold-Silver
8. Brucejack	Pretium Resources Inc.	Vein/Gold-Silver
9. Dome Mountain	Metal Mountain Resources Inc.	Vein/Gold
10. Spanish Mountain	Spanish Mountain Gold Ltd.	Shale hosted/Gold-Silver
11. Yellow Giant	Banks Island Gold	Vein/Gold-Silver

British Columbia is Canada's largest exporter of coal, leading producer of copper, and only producer of molybdenum. It also ranks as one of Canada's top producers of gold, silver, lead, and zinc.

