

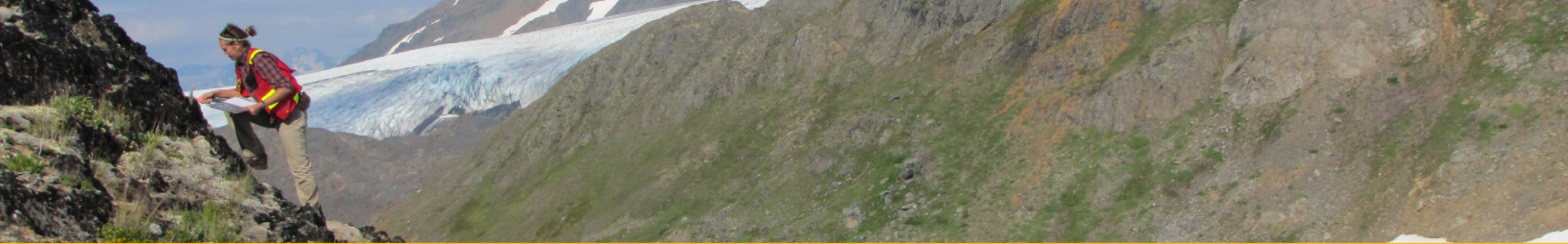
# Online databases at the British Columbia Geological Survey

British Columbia Geological Survey  
Mines and Mineral Resources Division  
Ministry of Energy and Mines

[www.em.gov.bc.ca/geology](http://www.em.gov.bc.ca/geology)







## Data: from the field to your computer

Founded in 1895, the British Columbia Geological Survey integrates historical data with active research programs and, drawing on continuously advancing geoscience concepts and technologies, creates new knowledge.

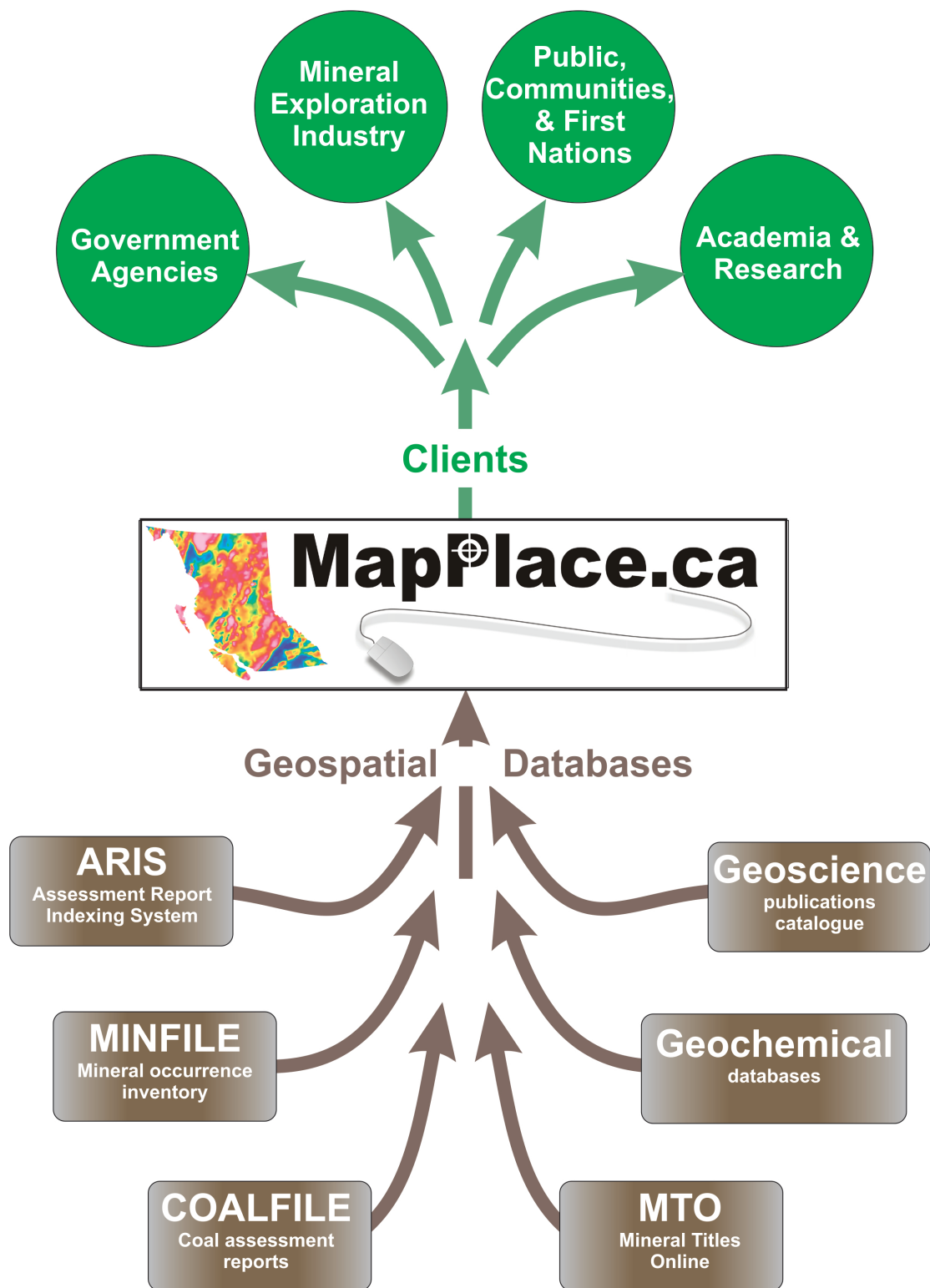
Since its inception, the Survey has provided information to help industry, government, research organizations, and the general public make decisions related to the Earth sciences.

This information resides in free web-based databases that are integrated with MapPlace, our online service that allows clients to browse, visualize, and analyze multidisciplinary geoscience data, and create custom maps.



Each year, the Fraser Institute polls mining and exploration companies to rank publically funded geoscience organizations. Since 2005, British Columbia Geological Survey databases have placed in the top ten worldwide.



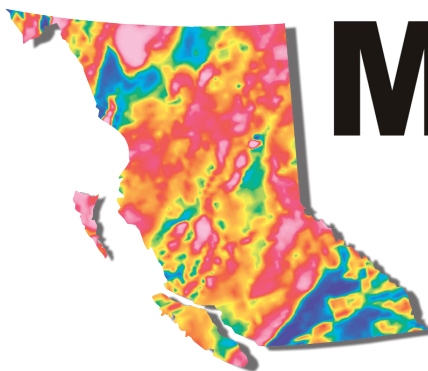
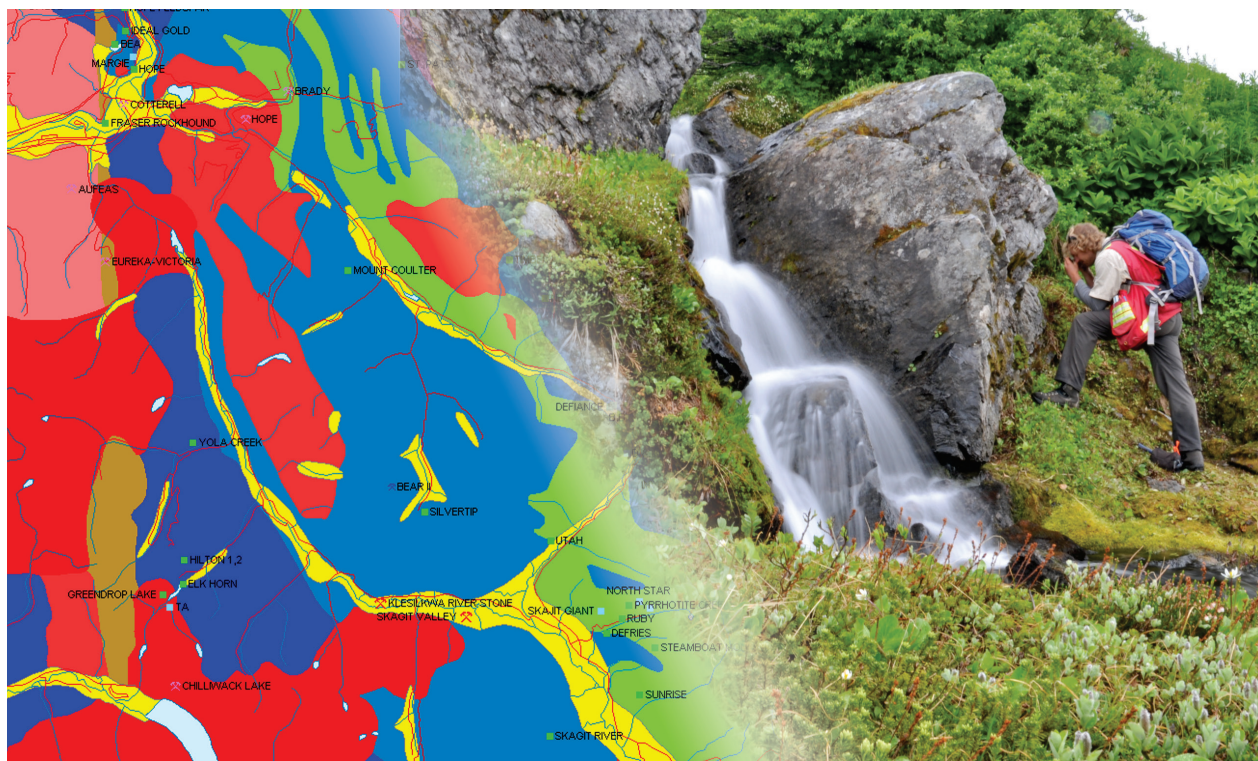




# MapPlace

**MapPlace is more than just a viewing platform.**

MapPlace allows users to generate custom maps by accessing the multidisciplinary databases housed by the British Columbia Geological Survey.



# MapPlace.ca



**Contact:** Kirk Hancock, [kirk.hancock@gov.bc.ca](mailto:kirk.hancock@gov.bc.ca)

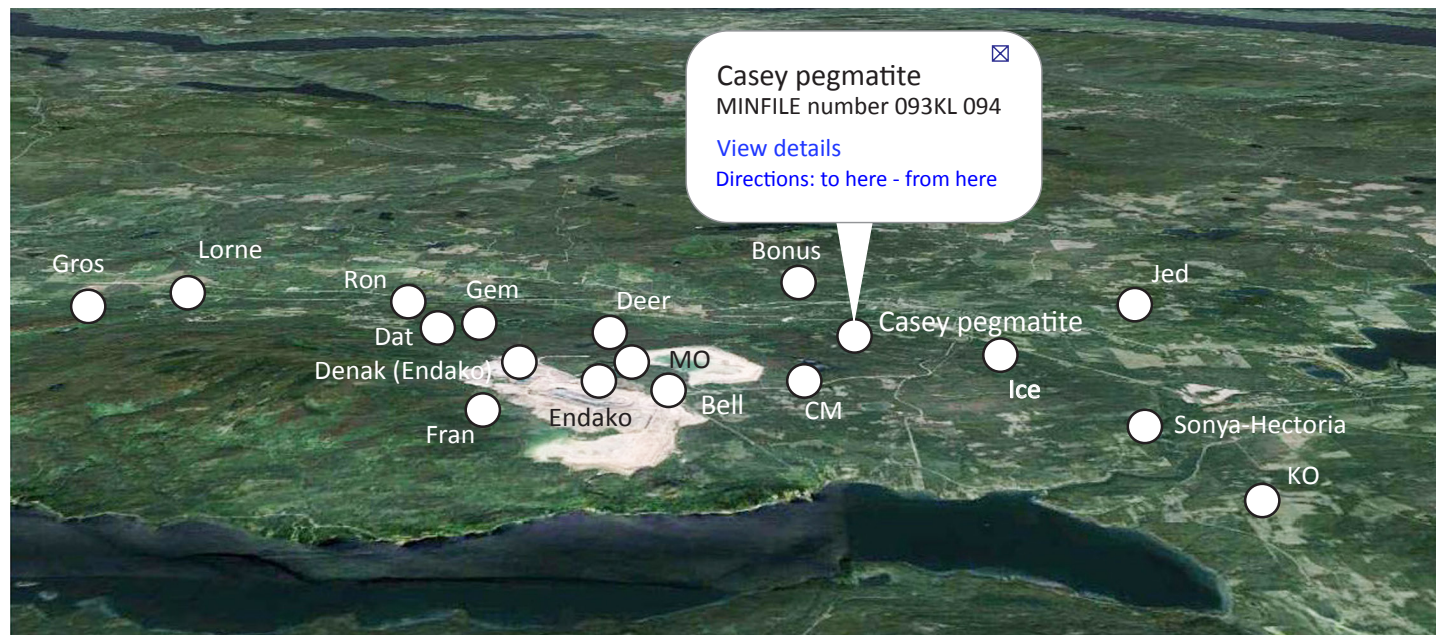




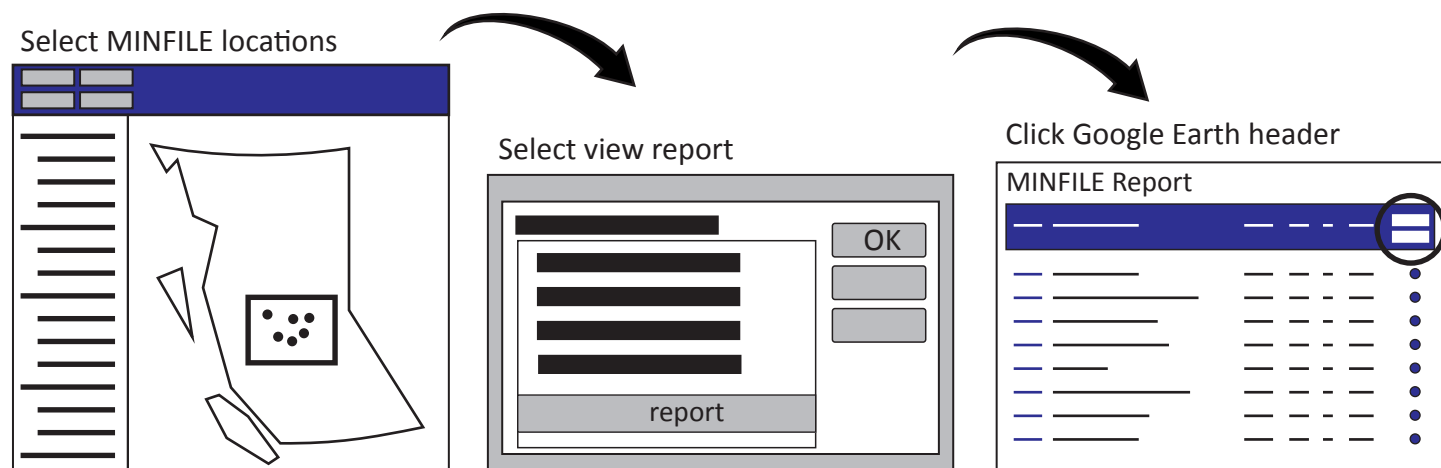


## Through MapPlace, Survey databases talk to each other.

ARIS, MINFILE, COALFILE, Property File, geochemical surveys, mineral titles, geological and topographic maps, and the British Columbia Geological Survey publication catalogue can be queried simultaneously, and the output projected onto base imagery of choice.



MapPlace queries MINFILE database, displays results on oblique aerial photograph, and links back to database.

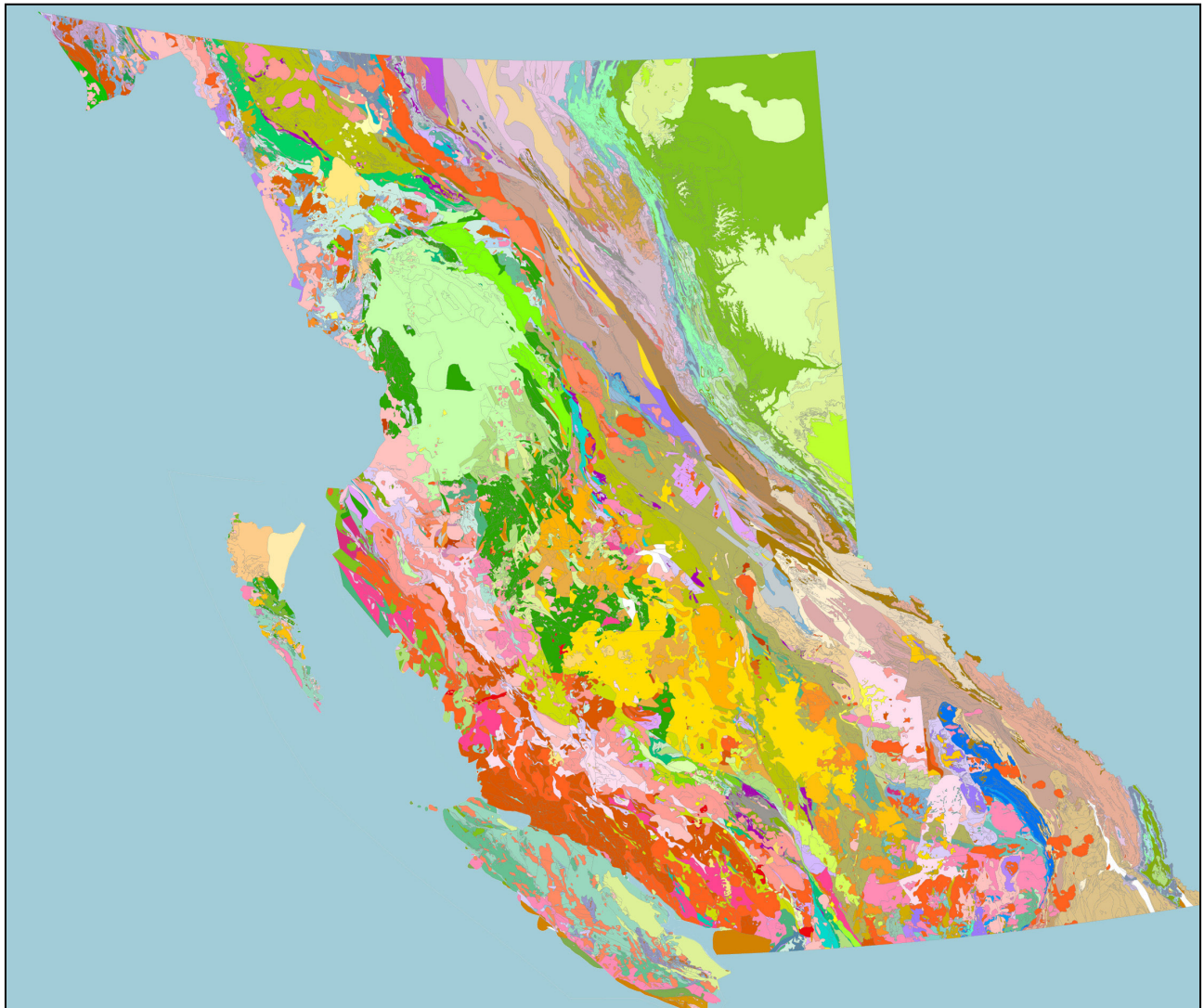






## British Columbia Digital Geology

The British Columbia Geological Survey delivers a continuously updated, downloadable provincial bedrock geology map. The current edition operates in a spatial database, using new techniques that simplify map compilation. These techniques are transferable to the minerals industry.



**Contact:** Yao Cui, [yao.cui@gov.bc.ca](mailto:yao.cui@gov.bc.ca)







# MINFILE

MINFILE is an inventory documenting metallic mineral, industrial mineral, and coal occurrences in British Columbia. With almost 14,000 entries, MINFILE is being updated continuously.



Query by

- location
- identification number
- mineralogy
- commodity
- host rock
- deposit type
- geological setting
- age
- production
- references



**Contact:** Sarah Meredith-Jones, [sarah.meredithjones@gov.bc.ca](mailto:sarah.meredithjones@gov.bc.ca)







## Assessment Report Indexing System (ARIS)

ARIS is the searchable database of over 34,000 assessment reports submitted to the Ministry. These reports summarize results from exploration programs on mineral claims. After a one-year confidentiality period, the reports become an open resource for planning mineral exploration, investment, research, land use, and resource management.



Retrieve data about

- geology
- geochemistry
- geophysics
- sampling
- drilling
- prospecting
- physical work

ARIS archives previous exploration results so that explorationists can advance projects without duplicating previous work. Between 1967 and 2013, about \$2.6 billion was spent directly on field programs reported in ARIS.

**Contact:** Ted Fuller, [ted.fuller@gov.bc.ca](mailto:ted.fuller@gov.bc.ca)





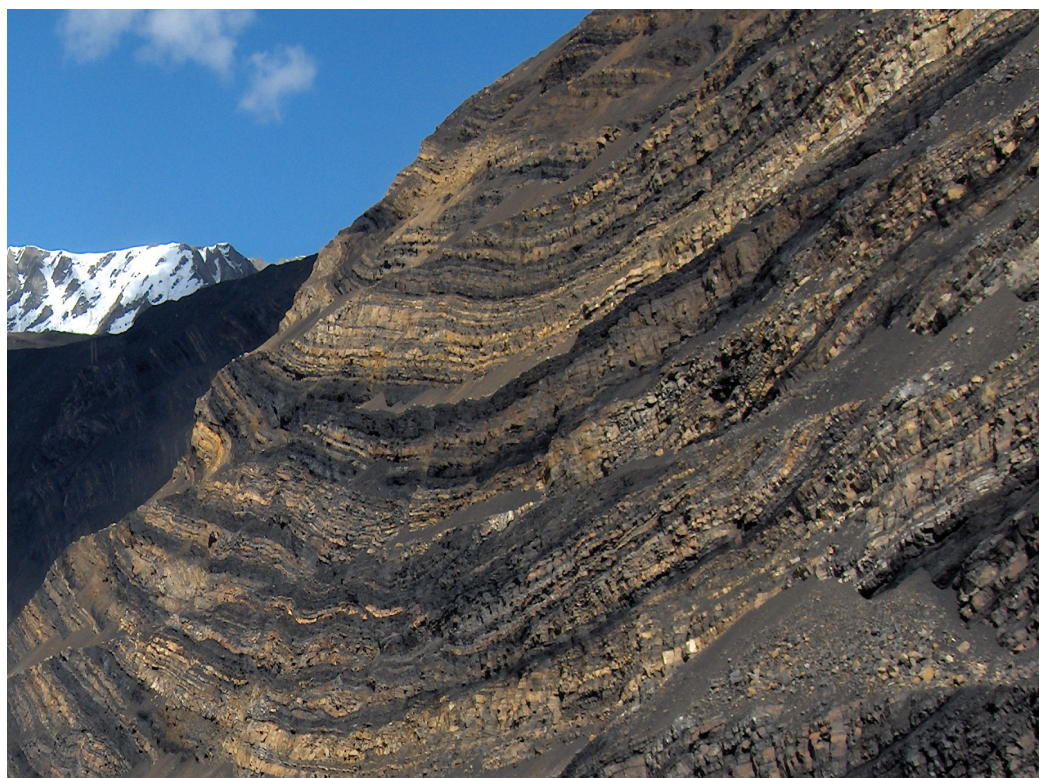


## COALFILE

COALFILE is a collection of assessment reports, maps, and data from boreholes, trenching, and sampling dating from 1900.

COALFILE contains

- 900 reports
- 960 maps
- 11,500 boreholes
- 3400 trenches
- 500 bulk samples



**Contact:** Janet Riddell, [janet.riddell@gov.bc.ca](mailto:janet.riddell@gov.bc.ca)







## Geochemical databases

The British Columbia Geological Survey maintains geochemical databases containing multi-element analyses from rock, till, stream sediment, and water samples. For example, the regional geochemical survey (RGS), includes determinations for up to 60 elements from about 64,000 sites covering about 80% of the province.

In 2012, the geochemical and rock archive was upgraded with a new storage library to accommodate over 600,000 geochemical samples collected by the Survey since the 1970s.



In 2012, the Province recognized Emeritus Scientist Dr. Ray Lett as a Premier's Award Finalist in the Legacy category for his contribution in developing British Columbia's geochemical database.



**Contact:** Alexei Rukhlov, [alexei.rukhlov@gov.bc.ca](mailto:alexei.rukhlov@gov.bc.ca)

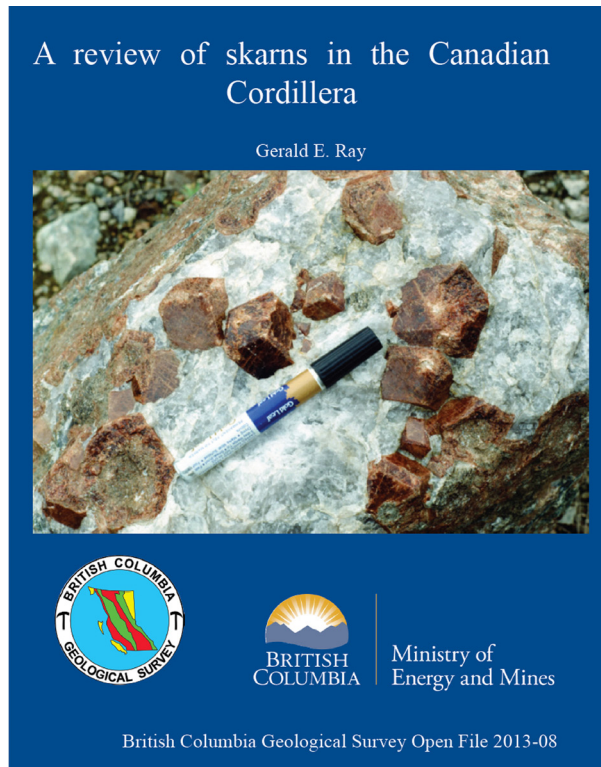
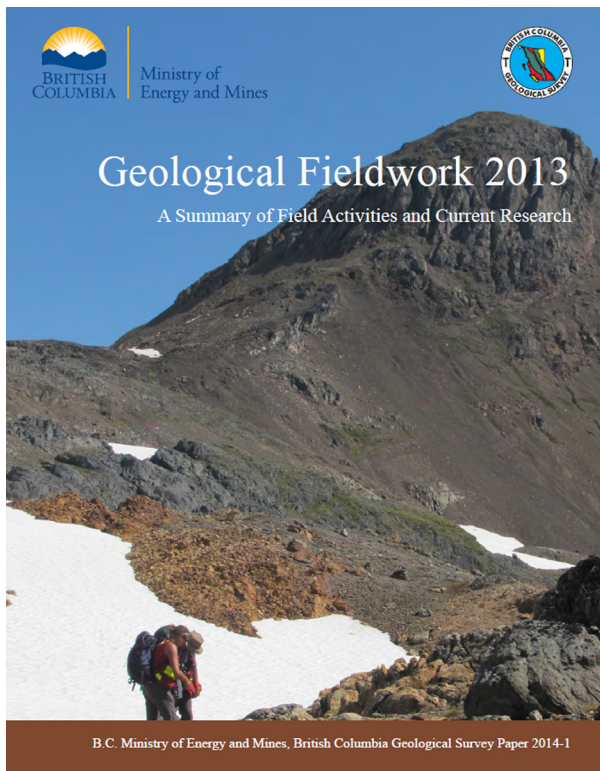




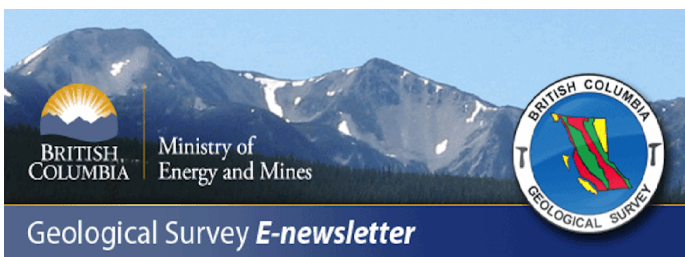


## Publications catalogue

Reports and maps produced by the British Columbia Geological Survey since 1874 can be searched for, and downloaded from, our publications catalogue. The Survey currently publishes geological Papers, Open Files, GeoFiles, and Information Circulars.



Each year in January, the British Columbia Geological Survey releases its Geological Fieldwork volume, highlighting field activities and current research.



To receive notice of our latest releases, email:  
**[Geological.Survey@gov.bc.ca](mailto:Geological.Survey@gov.bc.ca)**



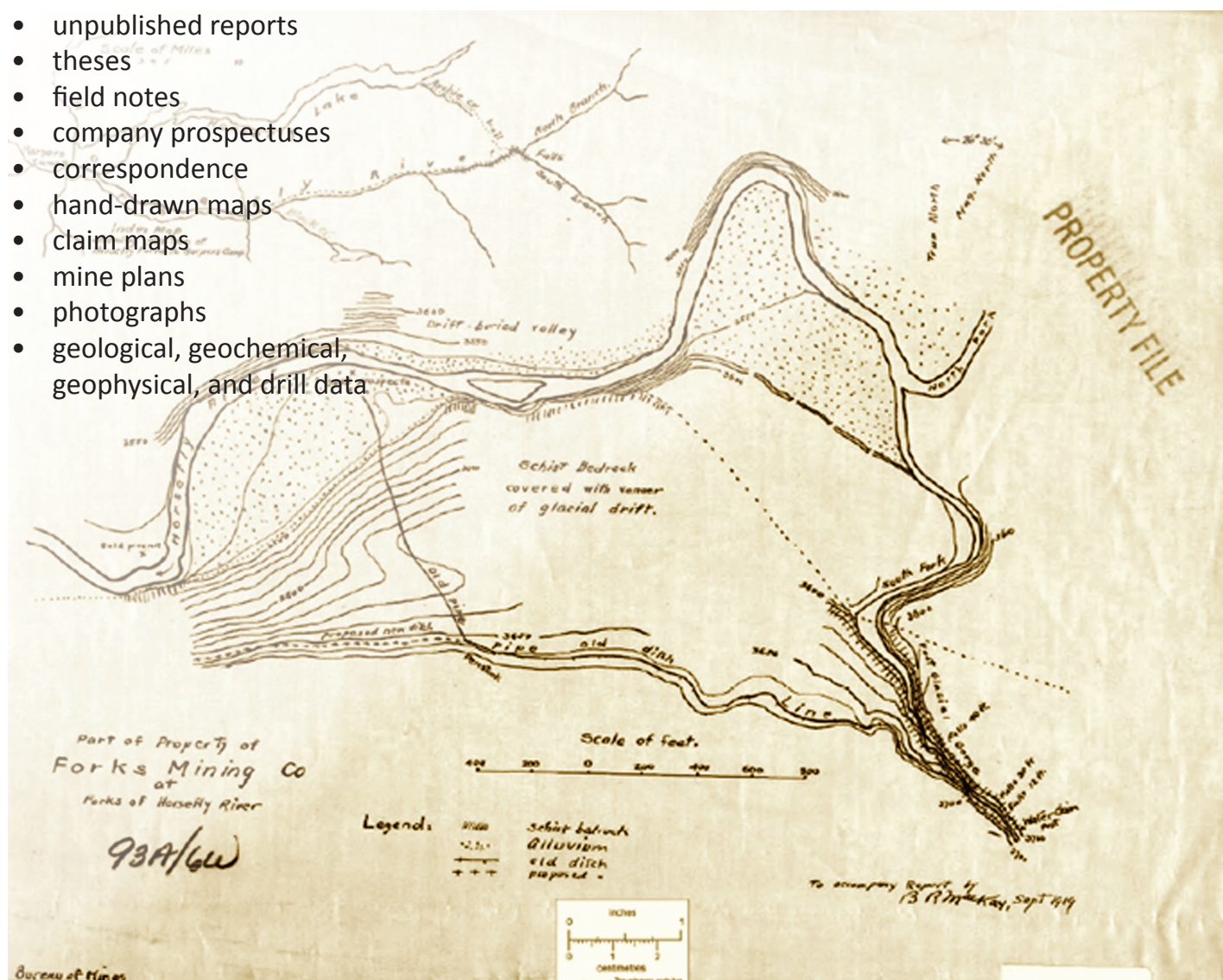




## Property File

Property File is a collection of over 54,000 documents donated to the Survey over the last 150 years by government, university, industry, and individuals. Previously available only in hard copy, these documents now can be searched for, and downloaded from, the Property File database.

- unpublished reports
- theses
- field notes
- company prospectuses
- correspondence
- hand-drawn maps
- claim maps
- mine plans
- photographs
- geological, geochemical, geophysical, and drill data



**Contact:** Kirk Hancock, [kirk.hancock@gov.bc.ca](mailto:kirk.hancock@gov.bc.ca)

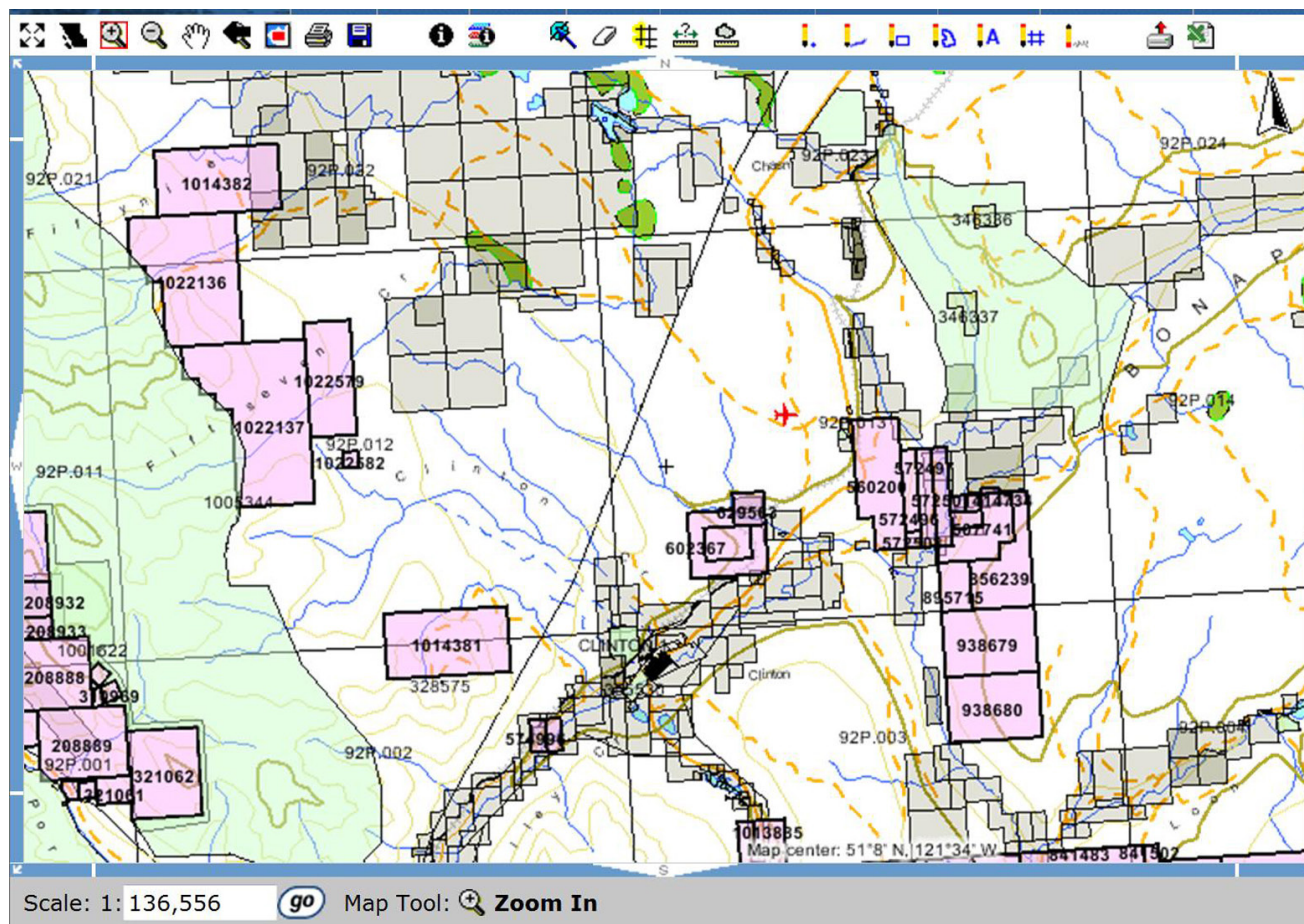






# Mineral Titles Online (MTO)

Mineral Titles Online (MTO) is a GIS-based system that enables the exploration industry to electronically acquire and maintain mineral, placer, and coal rights.



MineralTitles  
OnlineBC

[www.mtonline.gov.bc.ca](http://www.mtonline.gov.bc.ca)

**Contact:** [Mineral.Titles@gov.bc.ca](mailto:Mineral.Titles@gov.bc.ca)

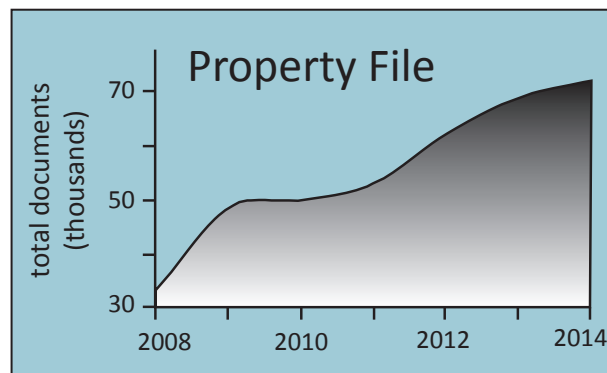
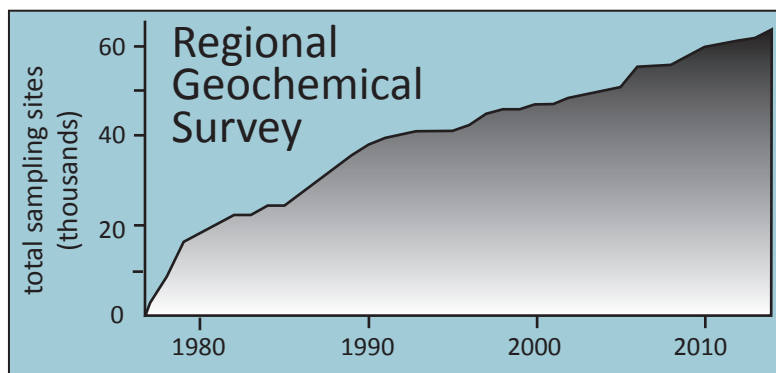
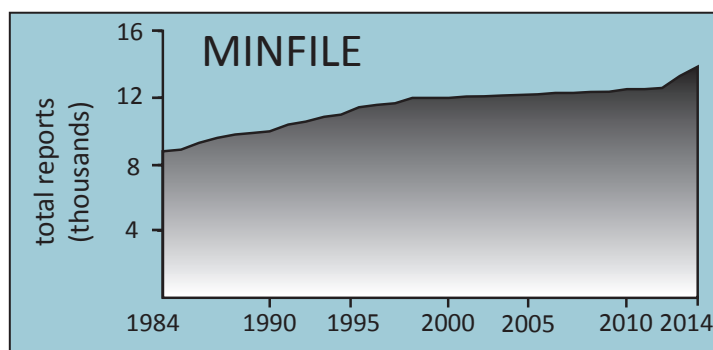
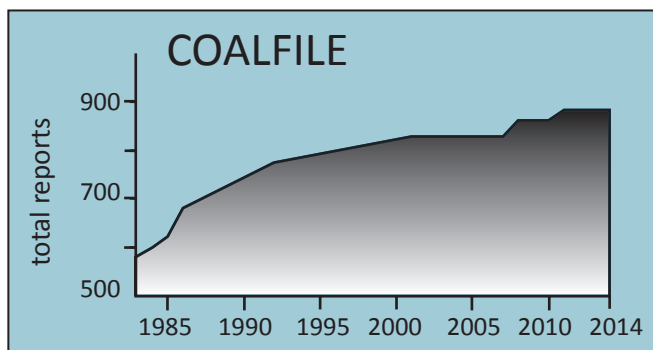
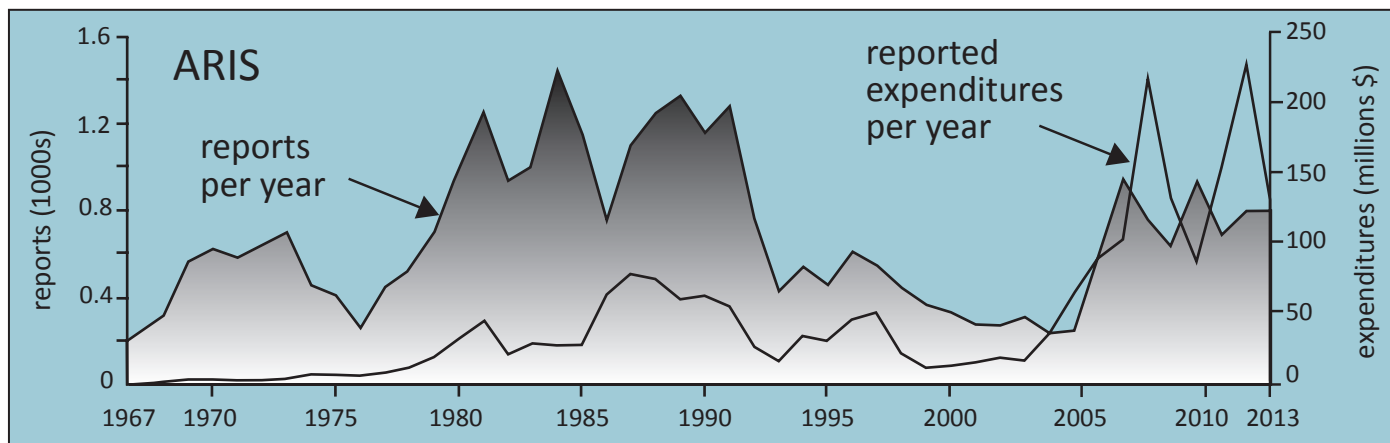






## Growth of databases

British Columbia Geological Survey databases continue to grow as new data arrive and as historical data are digitized.







# British Columbia Geological Survey

## Contacts:

### Mailing Address:

**British Columbia Geological Survey**  
**PO Box 9333 Stn Prov Gov't**  
**Victoria, BC V8W 9N3**

**Chief Geologist and Executive Director**  
Steve Rowins  
(250) 952-0454; [Stephen.Rowins@gov.bc.ca](mailto:Stephen.Rowins@gov.bc.ca)

**Director, Cordilleran Geoscience Section**  
Adrian Hickin  
(250) 953-3801; [Adrian.Hickin@gov.bc.ca](mailto:Adrian.Hickin@gov.bc.ca)

**Director, Resource Information Section**  
Larry Jones  
(250) 952-0386; [Larry.Jones@gov.bc.ca](mailto:Larry.Jones@gov.bc.ca)

**Director, Mineral Development Office**  
Gordon Clarke  
(604) 660-3332; [Gordon.Clarke@gov.bc.ca](mailto:Gordon.Clarke@gov.bc.ca)



**Main Office**  
**5th floor, 1810 Blanshard Street**  
**Victoria, BC**  
**Canada V8T 4J1**

**Mineral Development Office**  
**300-865 Hornby Street**  
**Vancouver, BC**  
**Canada V6Z 2G3**





British Columbia Geological Survey  
Ministry of Energy and Mines  
[www.em.gov.bc.ca/geology](http://www.em.gov.bc.ca/geology)

