

# Online databases at the British Columbia Geological Survey

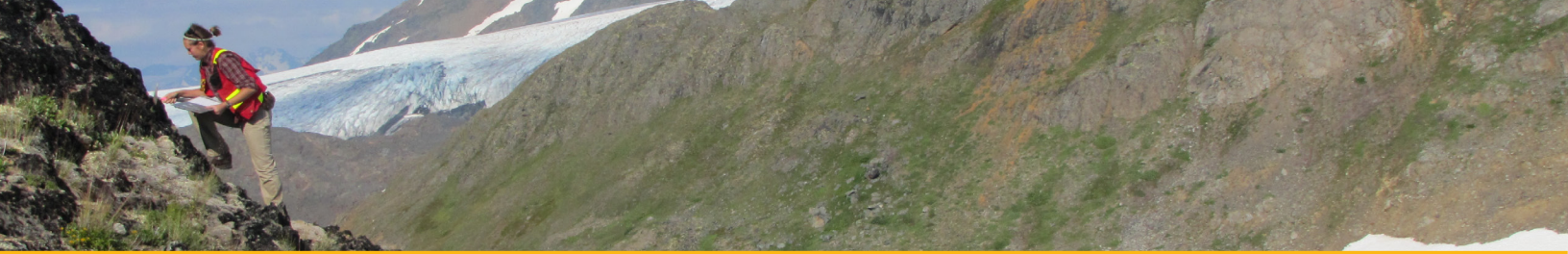


British Columbia Geological Survey  
Mines and Mineral Resources Division  
Ministry of Energy and Mines

[www.em.gov.bc.ca/geology](http://www.em.gov.bc.ca/geology)







## Data: from the field to your computer

Founded in 1895, the British Columbia Geological Survey integrates historical data with active research programs and, drawing on continuously advancing geoscience concepts and technologies, creates new knowledge.

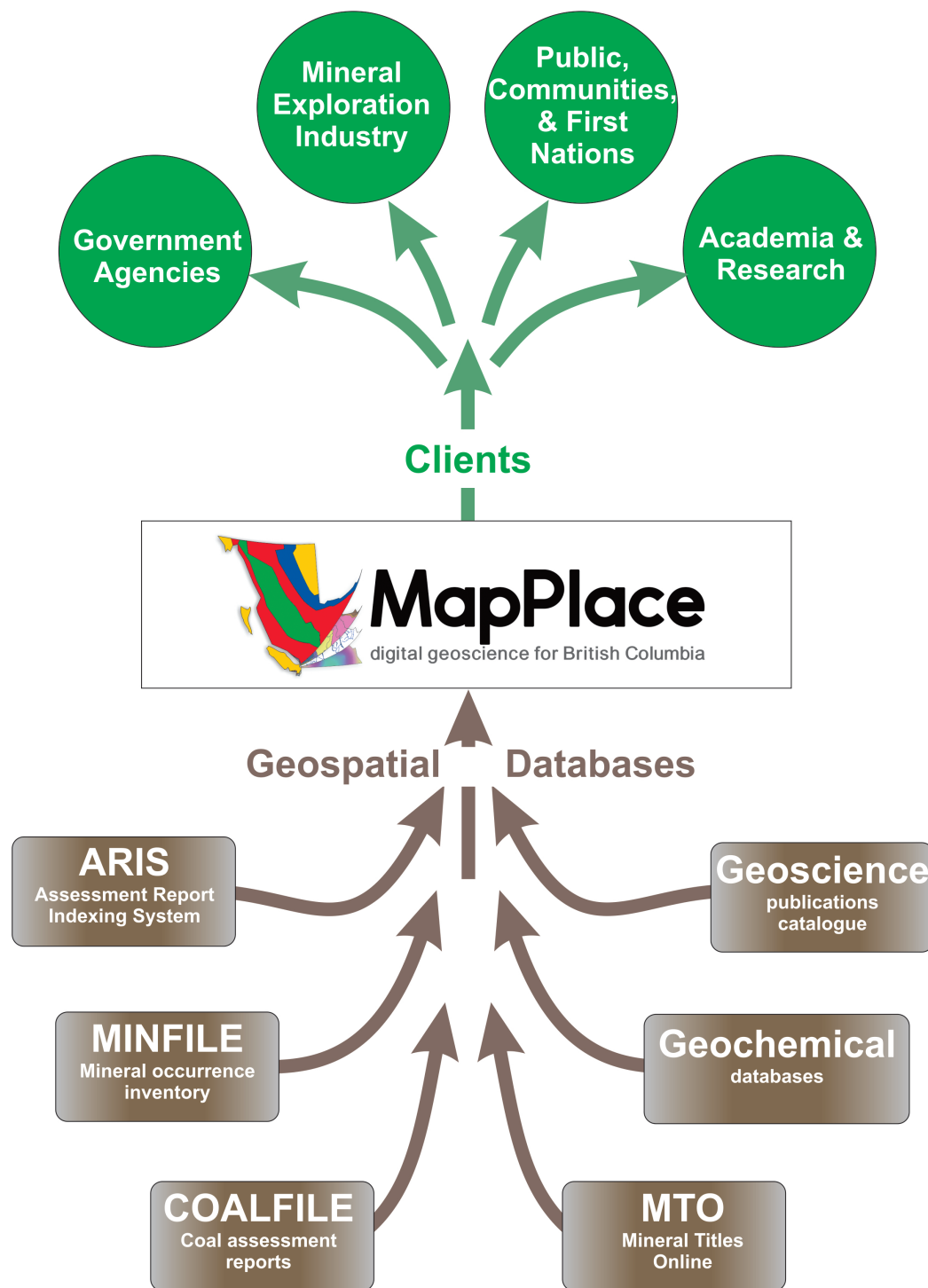
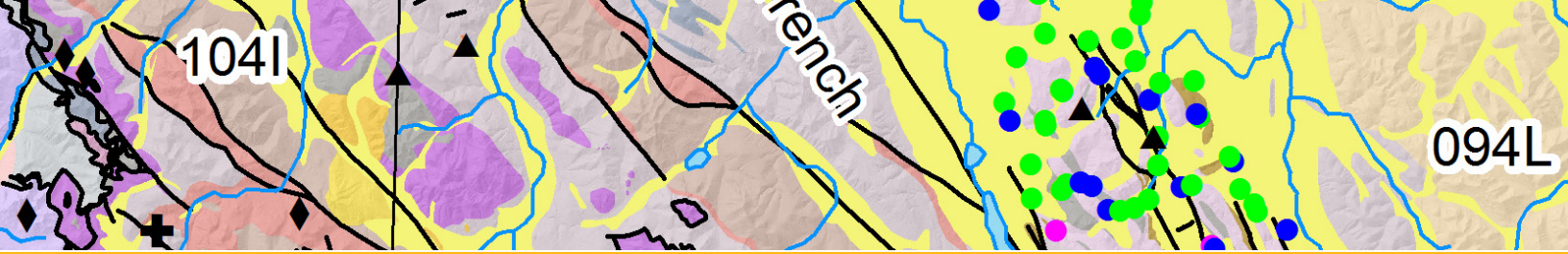
Since its inception, the Survey has provided information to help industry, government, research organizations, and the general public make decisions related to the Earth sciences.

This information resides in free web-based databases that are integrated with MapPlace, our online service that allows clients to browse, visualize, and analyze multidisciplinary geoscience data, and create custom maps.

*Building on MapPlace, MapPlace 2 allows anyone with an Internet connection to mine multiple geoscience databases that are updated continuously. With a simpler interface, MapPlace 2 is easier to use, faster, handles larger datasets, and provides access to third-party base maps and imagery.*









## MapPlace 2

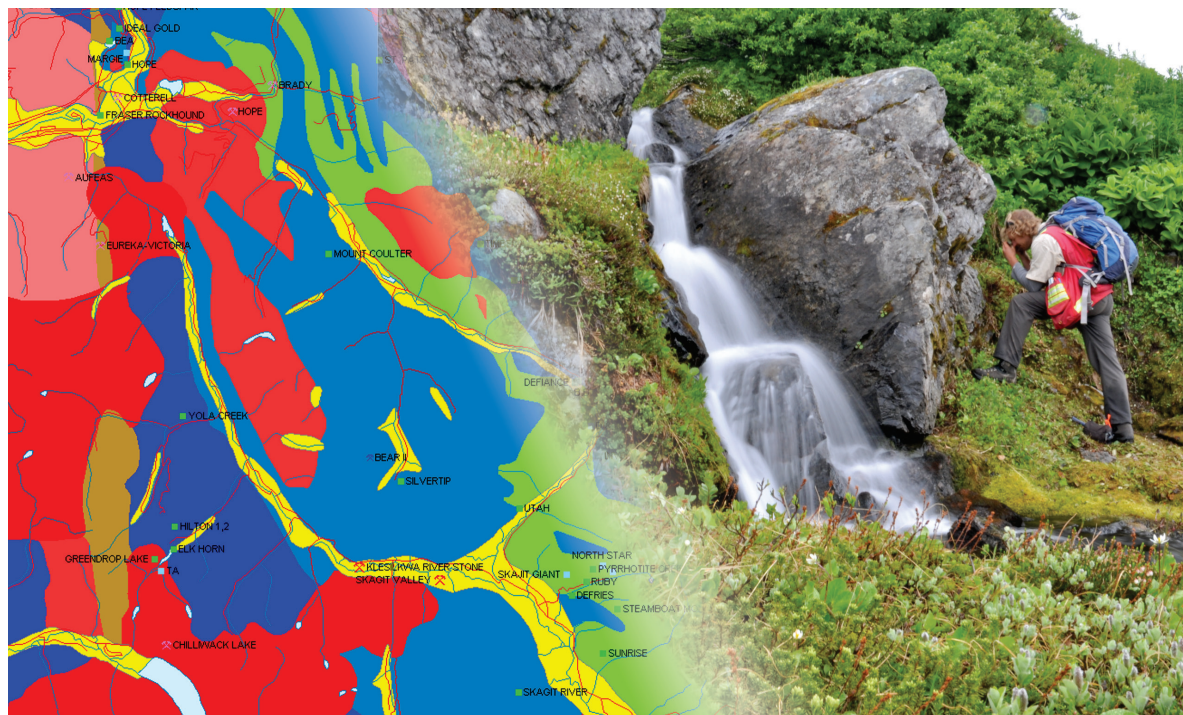
MapPlace is more than just a viewing platform



# MapPlace

digital geoscience for British Columbia

Upgrades to MapPlace in 2016 led to MapPlace 2. In contrast to other map services on the web, MapPlace 2 goes beyond simply displaying information. Databases are continuously updated and talk to each other, enabling users to conduct queries and generate custom results by connecting to current data from many sources.

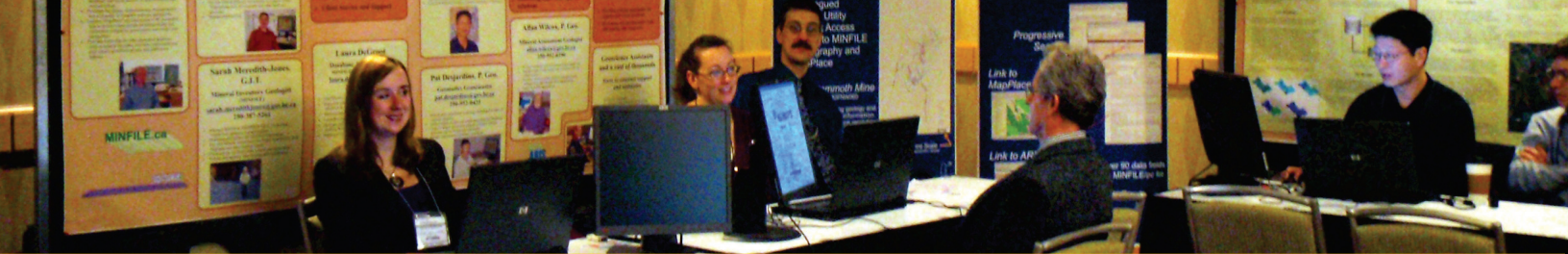


MapPlace 2 beta is now available at [www.MapPlace.ca](http://www.MapPlace.ca)

**Contact:** Kirk Hancock, [kirk.hancock@gov.bc.ca](mailto:kirk.hancock@gov.bc.ca)

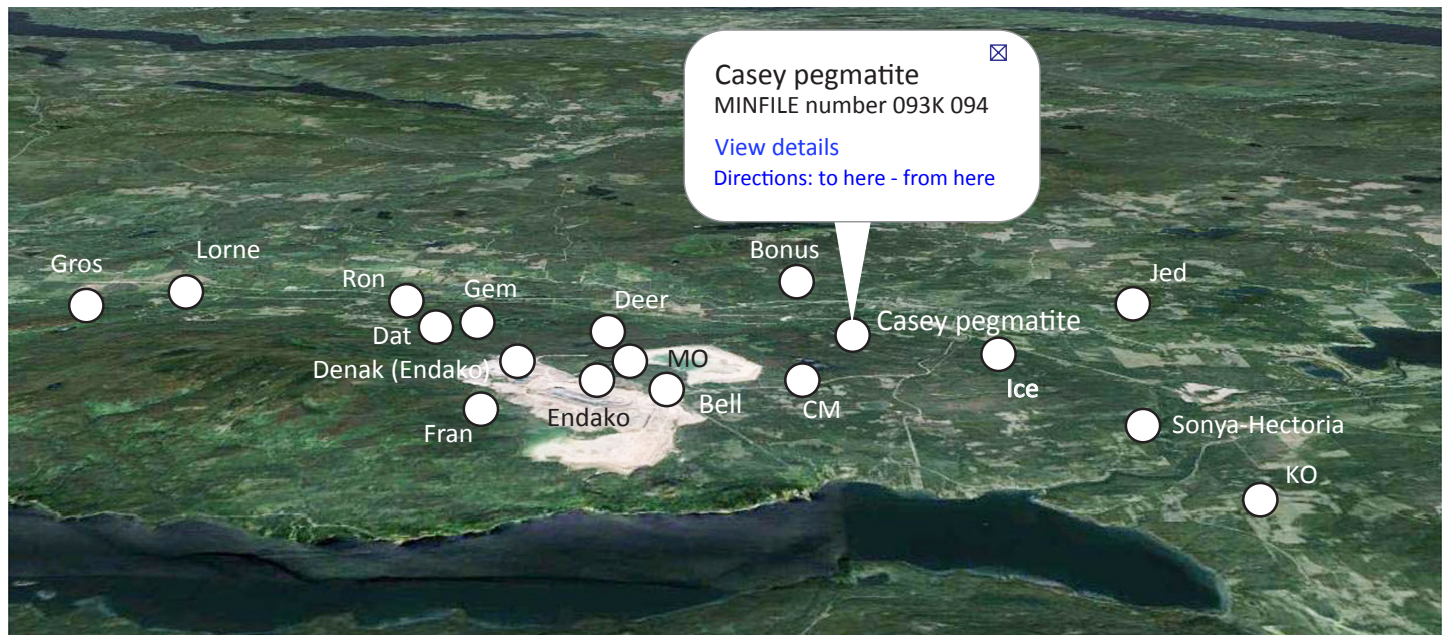






## Through MapPlace, Survey databases talk to each other.

ARIS, MINFILE, COALFILE, Property File, geochemical surveys, mineral titles, geological and topographic maps, and the British Columbia Geological Survey publication catalogue can be queried simultaneously, and the output projected onto base imagery of choice.



MapPlace queries MINFILE database, displays results on oblique aerial photograph, and links back to database.

### MINFILE Record Summary MINFILE No 093K 094

[XML Extract](#)

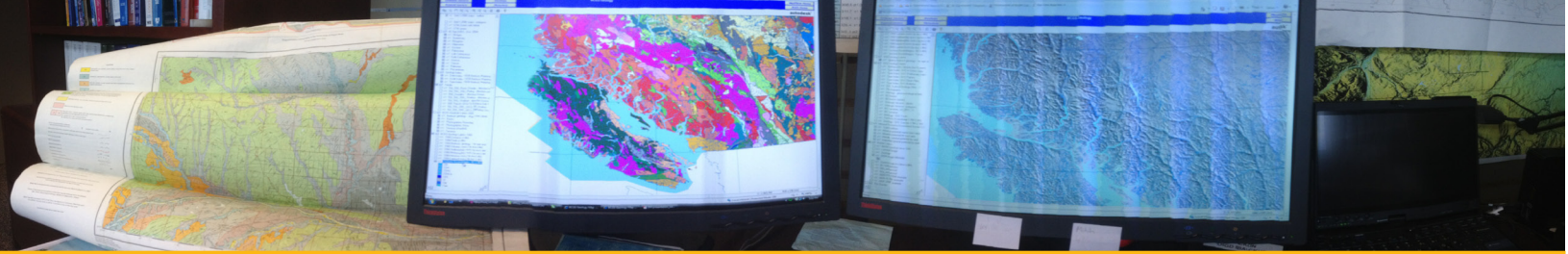
Print Preview	PDF	-- SELECT REPORT
File Created:	24-Jul-85	by BC Geological
Last Edit:	14-Mar-95	by David G.

#### SUMMARY

<b>Name</b>	CASEY PEGMATITE	<b>NMI</b>	
<b>Status</b>	Showing	<b>Mining Division</b>	Omineca
<b>Latitude</b>	<a href="#">54° 03' 30" N</a>	<b>BCGS Map</b>	093K005
<b>Longitude</b>	<a href="#">125° 02' 16" W</a>	<b>NTS Map</b>	093K03E
<b>Commodities</b>	Feldspar, Mica, Silica	<b>UTM</b>	10 (NAD 83)
<b>Tectonic Belt</b>	Intermontane	<b>Northing</b>	5991933
<b>Capsule</b>		<b>Easting</b>	366620
<b>Geology</b>	Several pegmatite dikes occur in a batholith of the Upper Jurassic Francois Lake Intrusive Suite. The largest dike is 9 metres wide and an aplite dike approximately 1.2 kilometres northeast of Casey Lake. The pegmatite consists of quartz, perthitic orthoclase, and minor biotite. Crystal size ranges up to about 2.5 centimetres.	<b>Deposit Types</b>	
<b>Bibliography</b>	EMPR AR 1965-126 EMPR PF (See 093K General file, Endako Area Maps)	<b>Terrane</b>	Cache Creek

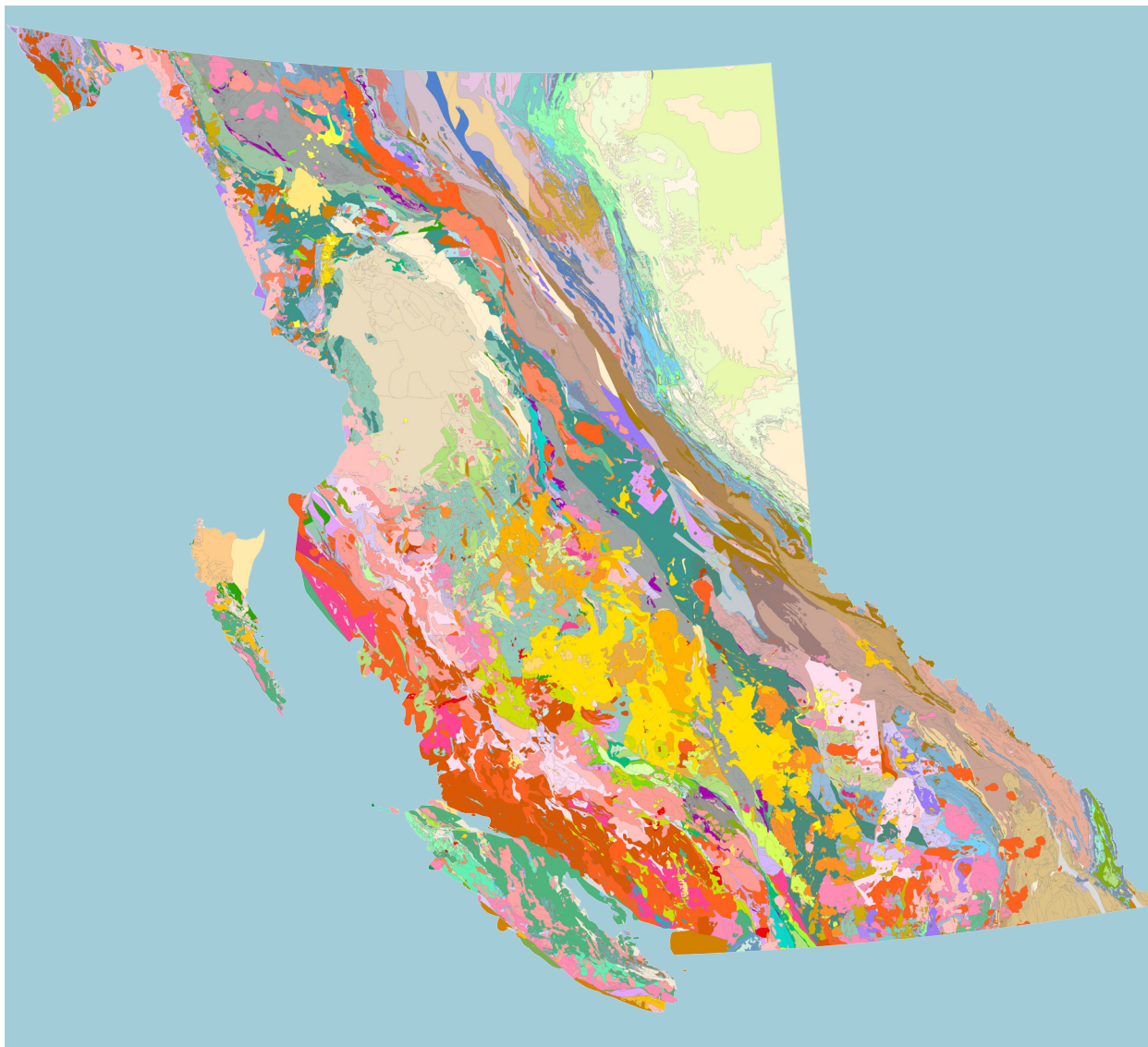






## British Columbia Digital Geology

The British Columbia Geological Survey delivers a continuously updated, downloadable provincial bedrock geology map. The current edition operates in a spatial database, using new techniques to simplify map compilation. These techniques are transferable to the minerals industry.



**Contact:** Yao Cui, [yao.cui@gov.bc.ca](mailto:yao.cui@gov.bc.ca)

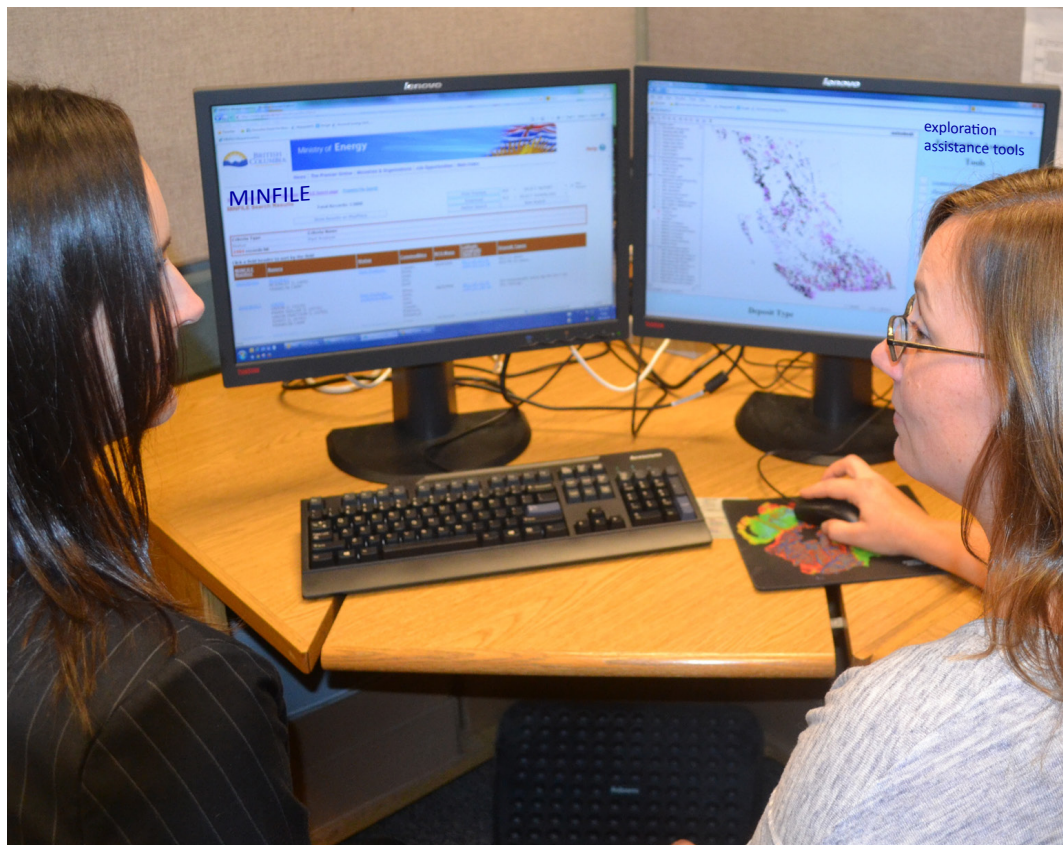






# MINFILE

MINFILE is an inventory documenting more than 14,000 metallic mineral, industrial mineral, and coal occurrences in British Columbia.



## Query by

- *location*
- *identification number*
- *mineralogy*
- *commodity*
- *host rock*
- *deposit type*
- *geological setting*
- *age*
- *production*
- *references*

**Contact:** Sarah Meredith-Jones, [sarah.meredithjones@gov.bc.ca](mailto:sarah.meredithjones@gov.bc.ca)







## Assessment Report Indexing System (ARIS)

ARIS is the searchable database of over 36,000 assessment reports submitted to the Ministry. These reports summarize results from exploration programs on mineral claims. After a one-year confidentiality period, the reports become an open resource for planning mineral exploration, investment, research, land use, and resource management.

*ARIS archives previous exploration results so that explorationists can advance projects without duplicating previous work. Between 1967 and 2015, about \$2.5 billion of exploration expenditures has been reported in ARIS.*



Retrieve data about

- geology
- geochemistry
- geophysics
- sampling
- drilling
- prospecting
- physical work

Data in digital format from 450 Assessment Reports can be downloaded through the ARIS web application, where 'Digital Data' is a searchable keyword.

**Contact:** Jessica Norris, [jessica.norris@gov.bc.ca](mailto:jessica.norris@gov.bc.ca) or Ted Fuller, [ted.fuller@gov.bc.ca](mailto:ted.fuller@gov.bc.ca)





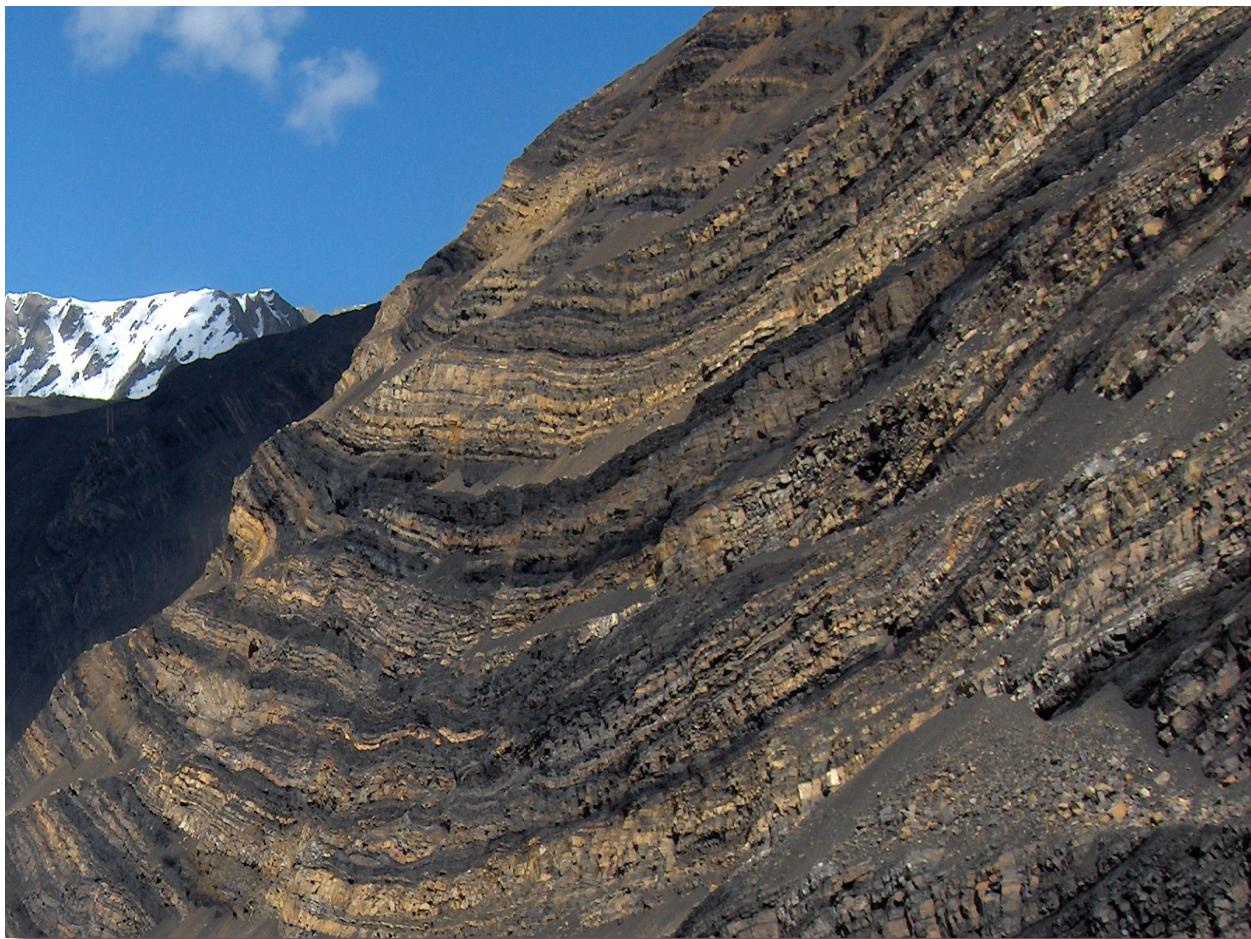


## COALFILE

COALFILE is a collection of assessment reports, maps, and data from boreholes, trenching, and sampling dating from 1900.

COALFILE contains

- 990 reports
- 5570 maps
- 16,090 boreholes
- 3640 trenches
- information about 550 bulk samples



**Contact:** Jessica Norris, [jessica.norris@gov.bc.ca](mailto:jessica.norris@gov.bc.ca)







## Geochemical databases

The British Columbia Geological Survey maintains geochemical databases containing multi-element analyses from rock, till, stream sediment, and water samples. For example, the regional geochemical survey (RGS), includes determinations for up to 60 elements from over 64,000 sites covering about 80% of the province.

*The geochemical and rock archive has been upgraded with a new storage library to accommodate over 600,000 geochemical samples collected by the Survey since the 1970s. The Survey also maintains a geochemical laboratory that includes sample preparation and mineral separation facilities, rock saws, a benchtop portable XRF, and a Linkam fluid inclusion stage.*

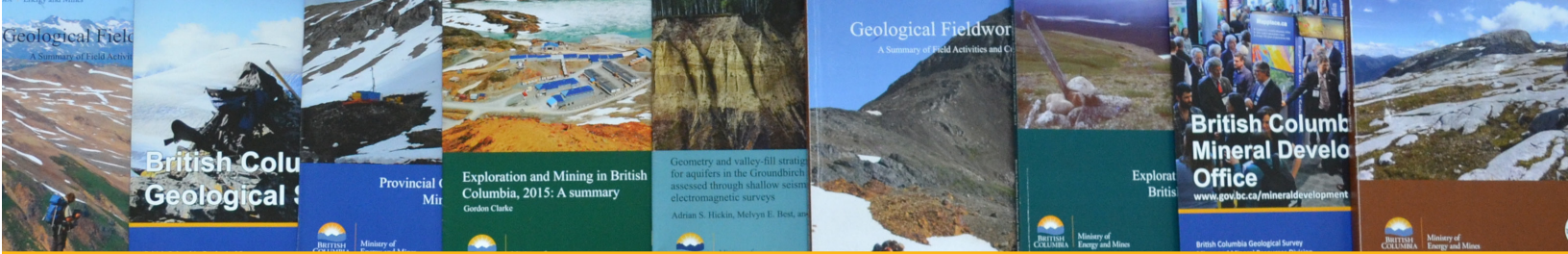


*An updated lithogeochemical database provides data collected since 1986, and includes more than 250,000 analyses from more than 11,000 rock samples.*

**Contact:** Alexei Rukhlov, [alexei.rukhlov@gov.bc.ca](mailto:alexei.rukhlov@gov.bc.ca)

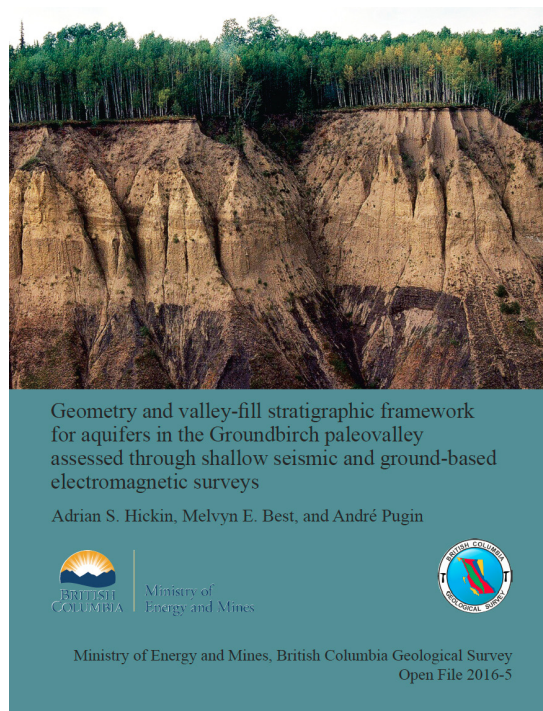
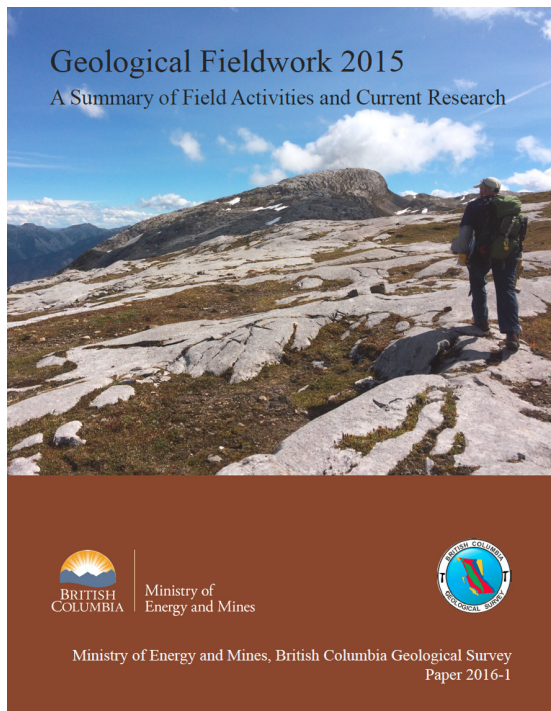




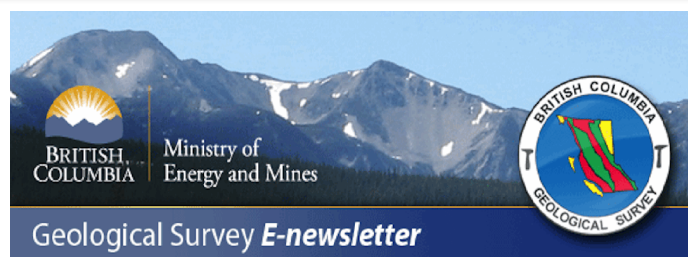


## Publications catalogue

Reports and maps produced by the British Columbia Geological Survey since 1874 can be searched for and downloaded at no cost from our publications catalogue. The Survey currently publishes geological Papers, Open Files, GeoFiles, and Information Circulars.



*Each year in January, the British Columbia Geological Survey releases its Geological Fieldwork volume, highlighting field activities and current research. Other annual publications include the Provincial Overview of Exploration and Mining in British Columbia and the British Columbia Coal Industry Overview.*



To receive notice of our latest releases, email:  
**[Geological.Survey@gov.bc.ca](mailto:Geological.Survey@gov.bc.ca)**



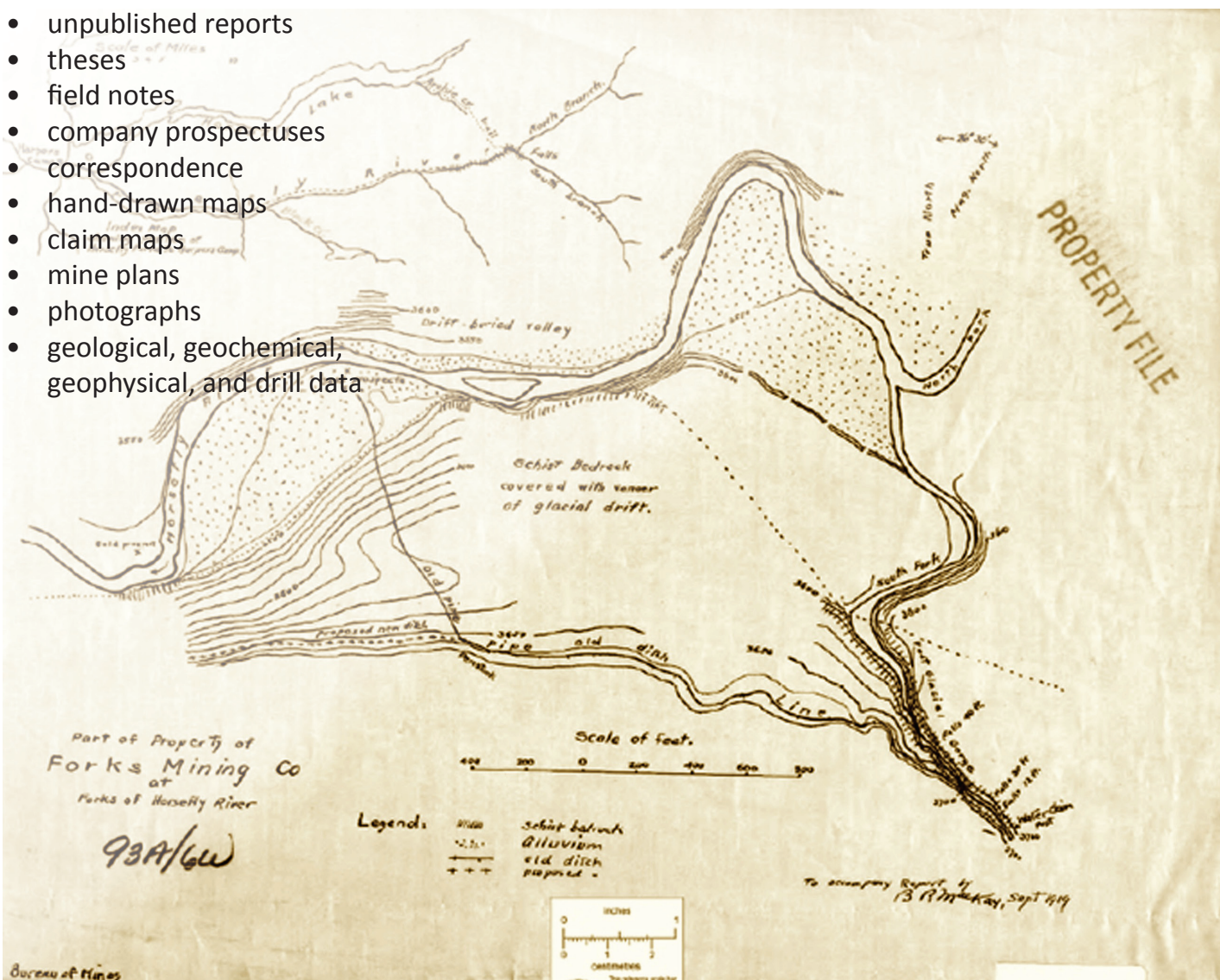




## Property File

Property File is a collection of over 60,000 documents donated to the Survey over the last 150 years by government, university, industry, and individuals. Previously available only in hard copy, these documents now can be searched for, and downloaded from, the Property File database.

- unpublished reports
- theses
- field notes
- company prospectuses
- correspondence
- hand-drawn maps
- claim maps
- mine plans
- photographs
- geological, geochemical, geophysical, and drill data



Contact: Kirk Hancock, [kirk.hancock@gov.bc.ca](mailto:kirk.hancock@gov.bc.ca)

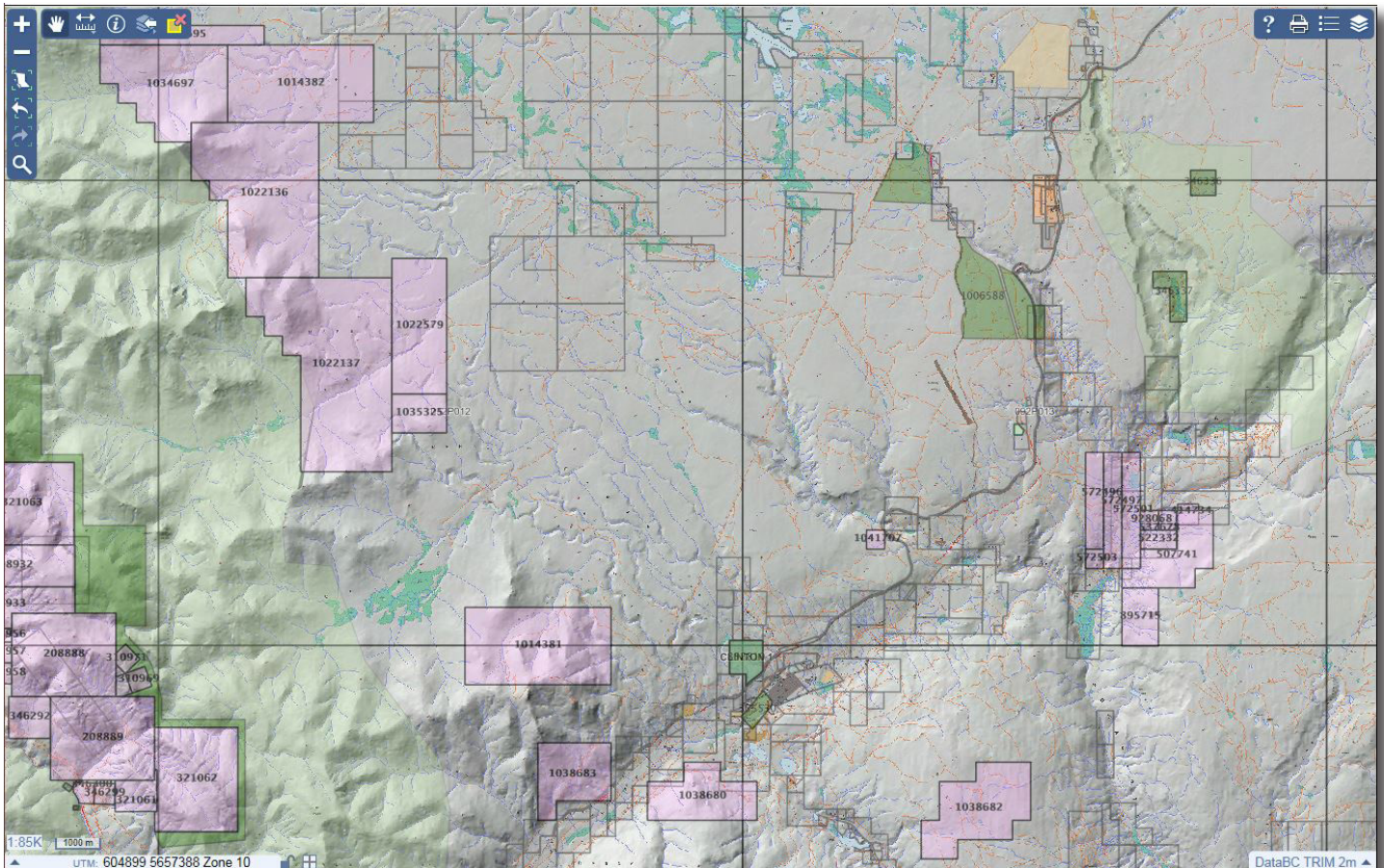






# Mineral Titles Online (MTO)

Mineral Titles Online (MTO) is a GIS-based system that enables the exploration industry to electronically acquire and maintain mineral, placer, and coal rights.



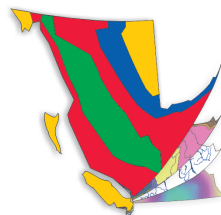
Mineral Titles data can be searched for at [www.MapPlace.ca](http://www.MapPlace.ca) and [www.mtonline.gov.bc.ca](http://www.mtonline.gov.bc.ca)



MineralTitles  
OnlineBC

[www.mtonline.gov.bc.ca](http://www.mtonline.gov.bc.ca)

**Contact:** [Mineral.Titles@gov.bc.ca](mailto:Mineral.Titles@gov.bc.ca)



**MapPlace**  
digital geoscience for British Columbia

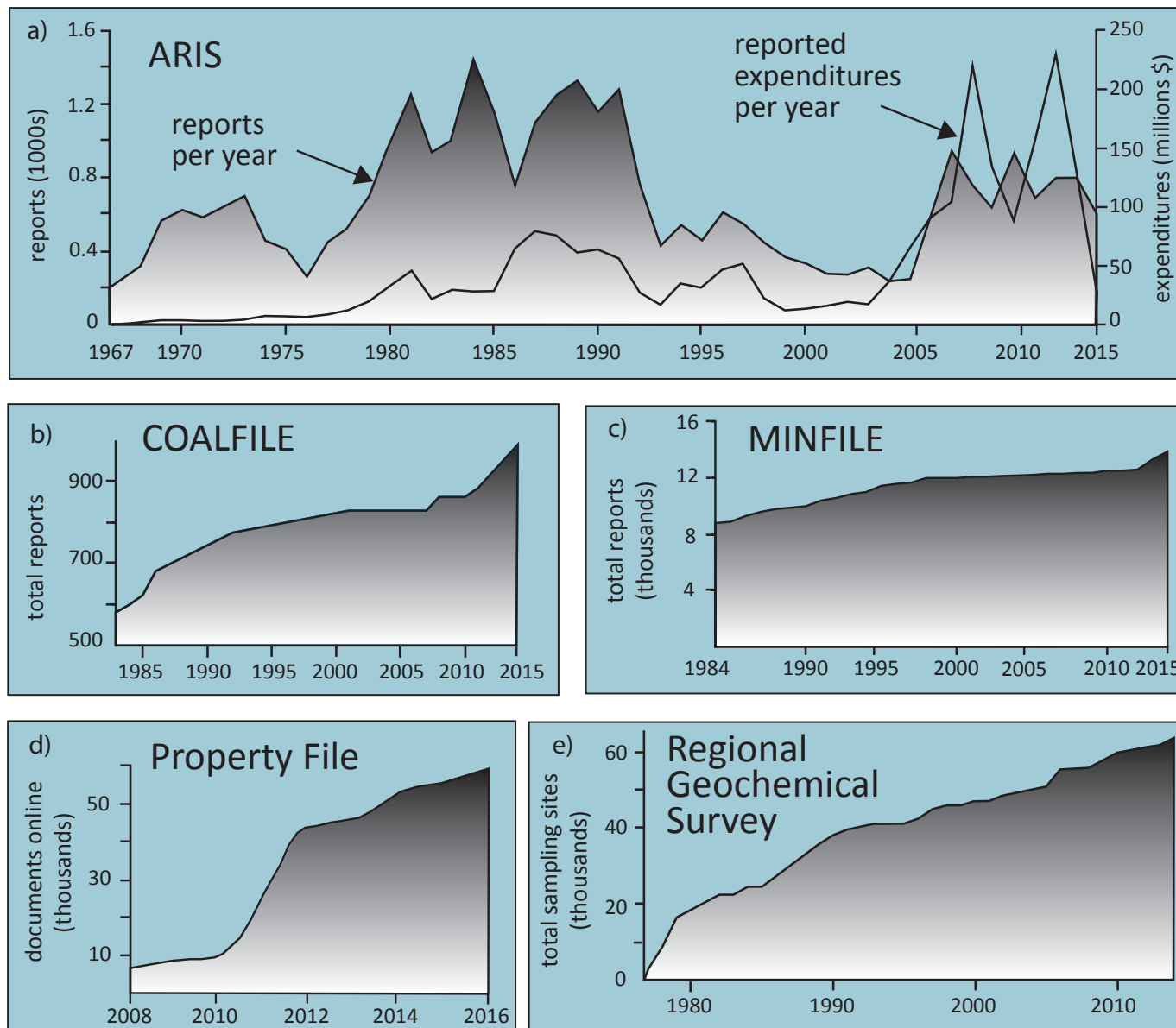






## Growth of databases

British Columbia Geological Survey databases continue to grow as new data arrive and as historical data are digitized.







# British Columbia Geological Survey

## Contacts:

### Mailing Address:

**British Columbia Geological Survey**  
**PO Box 9333 Stn Prov Gov't**  
**Victoria, BC V8W 9N3**

**Chief Geologist and Executive Director**  
Steve Rowins  
(250) 952-0454; [Stephen.Rowins@gov.bc.ca](mailto:Stephen.Rowins@gov.bc.ca)

**Director, Cordilleran Geoscience Section**  
Adrian Hickin  
(250) 953-3801; [Adrian.Hickin@gov.bc.ca](mailto:Adrian.Hickin@gov.bc.ca)

**Director, Resource Information Section**  
Larry Jones  
(250) 952-0386; [Larry.Jones@gov.bc.ca](mailto:Larry.Jones@gov.bc.ca)

**Director, Mineral Development Office**  
Gordon Clarke  
(604) 660-3332; [Gordon.Clarke@gov.bc.ca](mailto:Gordon.Clarke@gov.bc.ca)



**Main Office**  
**5th floor, 1810 Blanshard Street**  
**Victoria, BC**  
**Canada V8T 4J1**

**Mineral Development Office**  
**300-865 Hornby Street**  
**Vancouver, BC**  
**Canada V6Z 2G3**





British Columbia Geological Survey  
Ministry of Energy and Mines  
[www.em.gov.bc.ca/geology](http://www.em.gov.bc.ca/geology)

