



The Golden Triangle of northwestern British Columbia



Ministry of
Energy, Mines and
Petroleum Resources

Information Circular 2020-06



Stikinia (Stikine terrane), home to the Golden Triangle

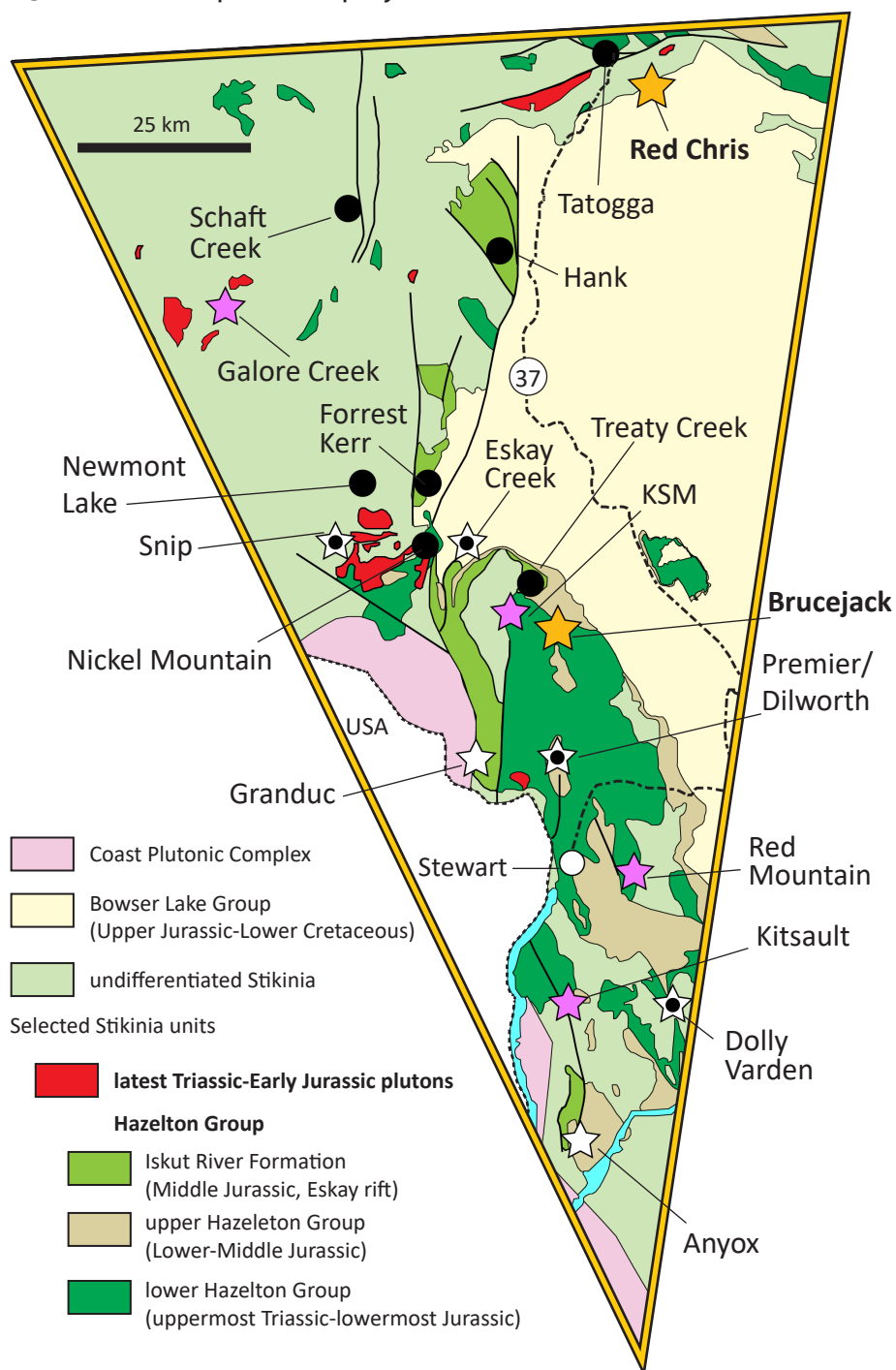
Stikinia is a long-lived oceanic arc terrane that extends for about 1000 km along the length of the Canadian Cordillera. Mineral deposits developed during

- accretion of terranes to the western margin of ancestral North America
- post-accretion deformation and magmatism



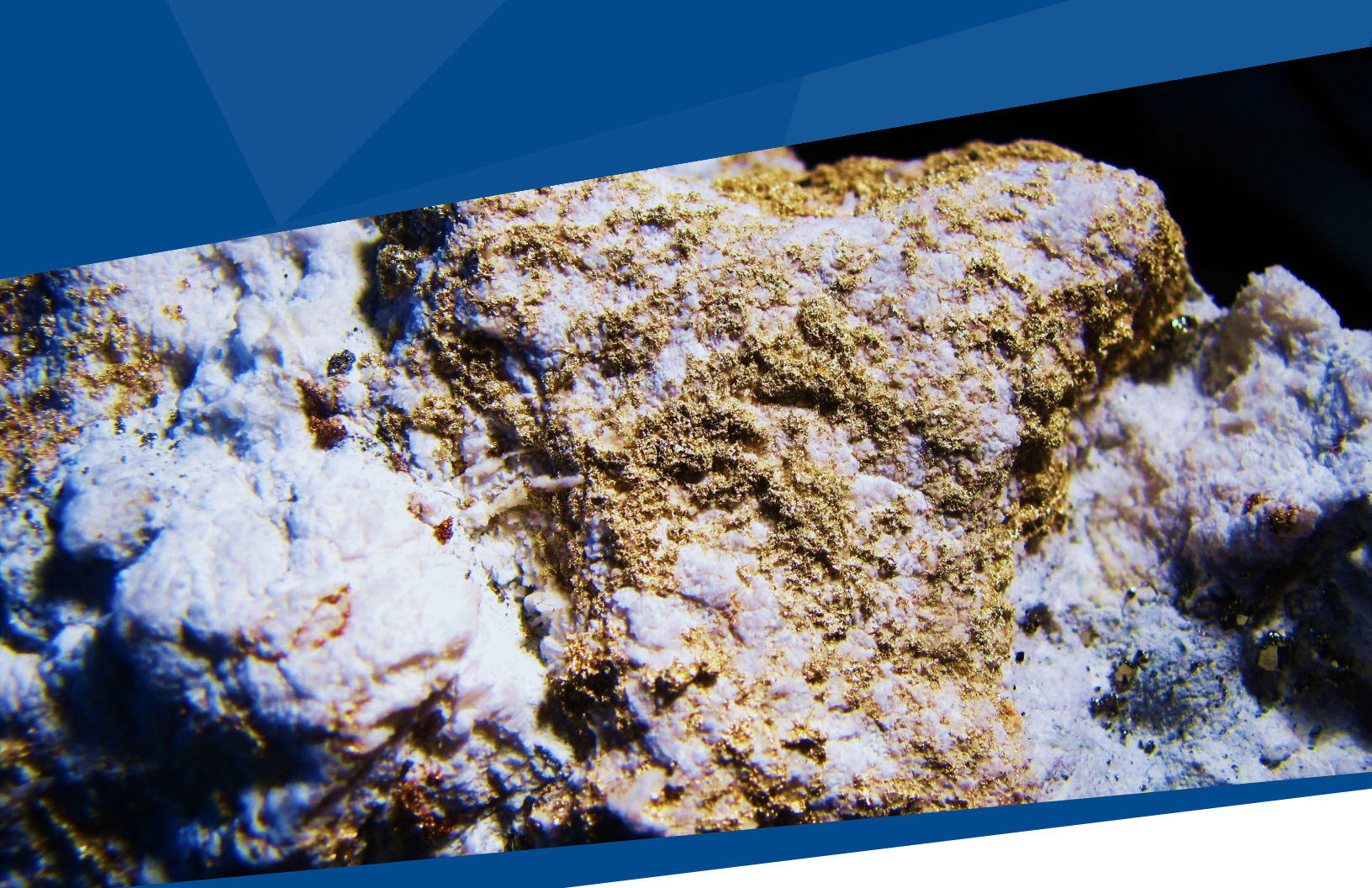
The Golden Triangle includes most of the major gold, silver, and copper deposits in west-central Stikinia. Most deposits are related to the Hazelton Group and affiliated intrusions.

- ★ current mine
- ★ proposed mine
- ☆ significant past-producing mine
- ☆● significant past-producing mine with new exploration
- selected exploration project



Enhanced infrastructure is encouraging exploration.





Past and current operating mines

More than 150 mines have operated in the region since prospectors first arrived near the end of the 19th century. Important past-producing mines include Granduc, Eskay Creek, Anyox, Kitsault, Premier/Dilworth, Dolly Varden, and Snip. Exploration continues at Eskay Creek, Premier/Dilworth, Dolly Varden, and Snip.

Brucejack mine (Pretium Resources Inc.)

- epithermal gold-silver
- began commercial production July 2017
- Proven and Probable reserves, April, 2019
16.0 Mt at 12.6 g/t Au, 59.3 g/t Ag
- Measured and Indicated resource, April, 2019
VOK zone 13.7 Mt at 17.15 g/t Au and 15.5 g/t Ag;
West zone 4.9 Mt at 5.85 g/t Au and 267 g/t Ag
- current mine life to 2033

Red Chris mine (Newcrest Mining Limited 70%, Imperial Metals Corporation 30%)

- porphyry copper-gold
- began commercial production in 2015
- Proven and Probable reserves, Feb. 2012
301.5 Mt at 0.36% Cu and 0.27 g/t Au
- Measured and Indicated resource, Feb. 2012
1.034 Bt at 0.35% Cu, 0.35 g/t Au and 1.14 g/t Ag



Proposed mines

At a minimum, these projects have submitted a project description to begin environmental assessment.

- reserves are Proven + Probable
- resources are Measured + Indicated

Galore Creek (Galore Creek Mining Corporation)

- alkalic porphyry Au-Cu
- reserves, July 2011
528 Mt at 0.59% Cu, 0.32 g/t Au, 6.02 g/t Ag
- resource, Sept. 2014
1.104 Bt at 0.47% Cu; 0.26 g/t Au, 4.2 g/t Ag

Kitsault (Alloycorp Mining Inc.)

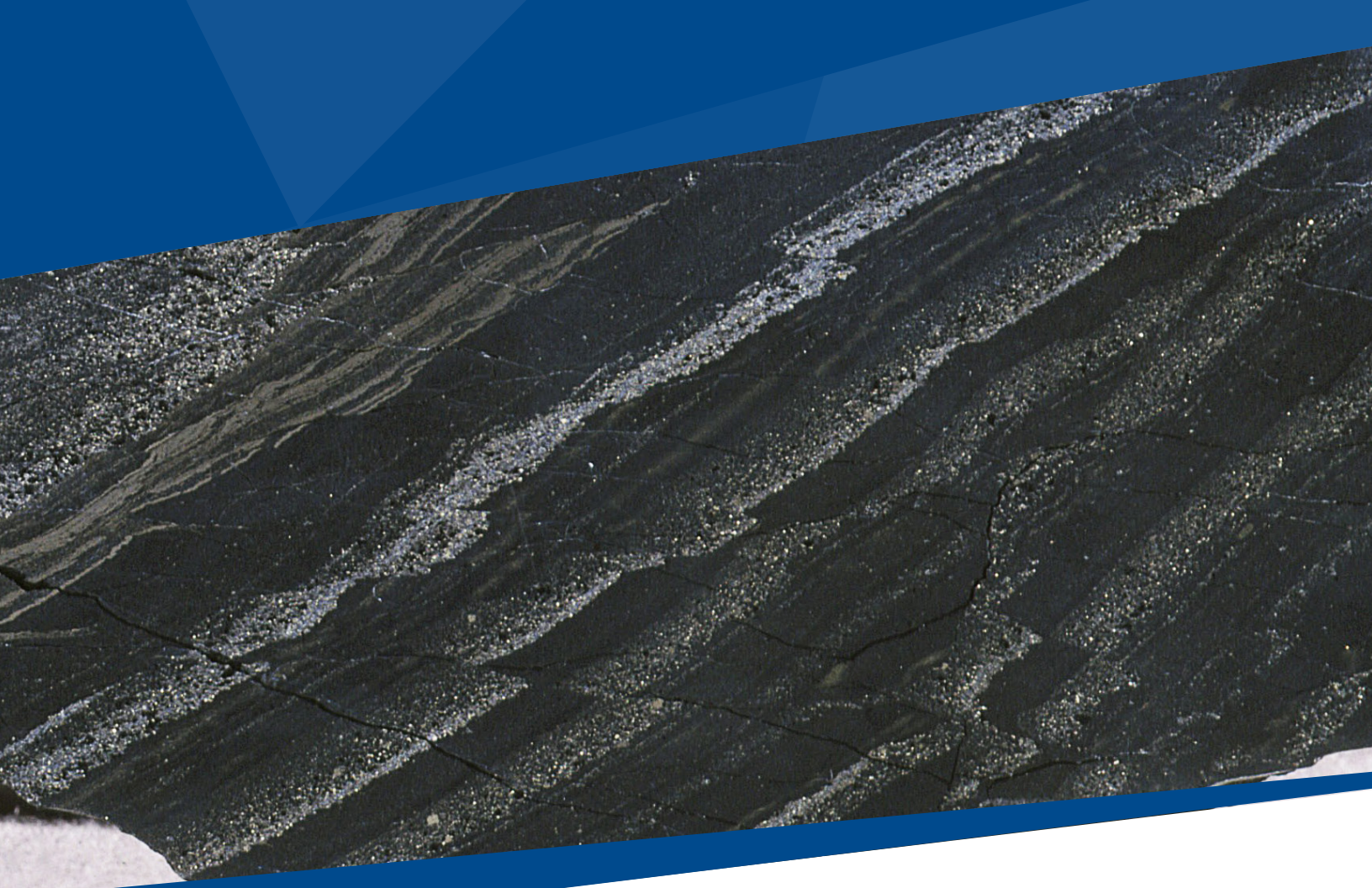
- porphyry Mo-Ag
- reserves, March 2014
231.1 Mt at 0.082% Mo, 5.3 g/t Ag
- resource, Apr. 2012
321.8 Mt at 0.071% Mo, 4.8 g/t Ag

KSM (Seabridge Gold Inc.)

- calc-alkaline porphyry Au-Cu-Ag-Mo
- reserves, Feb. 2018
2.198 Bt at 0.55 g/t Au, 0.21% Cu, 2.6 g/t Ag, 0.0043% Mo
- resource, March 2019
2.8 Bt at 0.52 g/t Au, 0.21% Cu, 2.8 g/t Ag, 0.0054% Mo

Red Mountain (Ascot Resources Ltd.)

- vein, breccia and stockwork Au-Ag
- reserves, June 2017
1.953 Mt at 7.53 g/t Au, 21.9 g/t Ag
- resource, August 2019
3.19 Mt at 7.63 g/t Au, 21.02 g/t Ag



Selected 2019 exploration project updates

Schaft Creek (75% Teck Resources Limited, 25% Copper Fox Metals Inc.)

- calc-alkalic porphyry Cu-Mo-Au
- reserves, Jan. 2013
940.8 Mt at 0.27% Cu, 0.018% Mo, 0.19 g/t Au, 1.72 g/t Ag
- resource, Jan. 2013
1.229 Bt at 0.26% Cu, 0.017% Mo, 0.19 g/t Au, 1.69 g/t Ag

Premier/Dilworth (Ascot Resources Ltd.)

- quartz vein Au, Ag (past producer)
- Indicated, Nov. 2018
2.78 Mt at 7.46 g/t Au, 26.2 g/t Ag
- Inferred, Nov. 2018
6.03 Mt at 7.18 g/t Au, 24.0 g/t Ag
- 52,000 m diamond drilling in 2019

Eskay Creek (Skeena Resources Limited)

- marine volcanic associated Au, Ag, Zn, Cu, Pb
- Indicated (pit constrained) Nov. 2019, 12.65 Mt at 4.3 g/t Au, 110 g/t Ag
- Inferred (pit constrained) Nov. 2019, 14.42 Mt at 2.3 g/t Au, 47 g/t Ag
- Indicated (underground) Nov. 2019, 819,000 t at 6.4 g/t Au, 139 g/t Ag
- Inferred (underground) Nov. 2019, 295,000 t at 7.1 g/t Au, 82 g/t Ag

Dolly Varden (Dolly Varden Silver Corporation)

- Kuroko massive sulphide Ag, Zn; polymetallic veins Ag, Pb, Zn +/- Au (past producer)
- Indicated, May 2019, 3.417 Mt at 299.8 g/t Ag
- Inferred, May 2019, 1.285 Mt at 2777.0 g/t Ag
- 11,000 m diamond drilling in 2019

Nickel Mountain (Garibaldi Resources Corp.)

- tholeiitic intrusion; Ni, Cu, Pt, Ag
- 25,600 m diamond drilling in 2019

Forrest Kerr (Aben Resources Ltd.)

- vein; Au, Ag, Cu
- 9,600 m diamond drilling in 2019

Hank (Golden Ridge Resources Ltd.)

- porphyry Cu-Ag; epithermal vein Au, Ag
- 3,000 m diamond drilling in 2019

Snip (Hochschild Mining Plc/ Skeena Resources Limited)

- quartz vein Au, Ag (past producer)
- 1,900 m diamond drilling in 2019

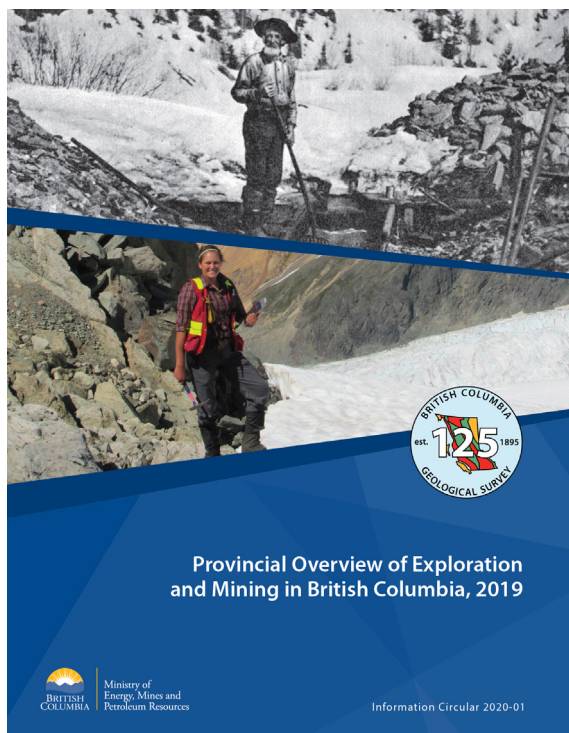
Newmont Lake (Crystal Lake Mining Corporation)

- skarn Cu, Au, porphyry Cu, Au, Ag
- ongoing diamond drilling in 2019

Treaty Creek (60% Tudor Gold Corp, 20% Teuton Resources Corp., 20% American Creek Resources Ltd.)

- epithermal vein, Au, Ag
- 10,000 m diamond drilling in 2019

Celebrating its 125th anniversary in 2020, the British Columbia Geological Survey publishes an annual overview of exploration and mining every January.



Brucejack mine, first gold pour, June 2017.
Courtesy of Pretium Resources Inc.



Ministry of
Energy, Mines and
Petroleum Resources



www.BCGeologicalSurvey.ca