

# A NEW SODALITE OCCURRENCE: MOUNT MATHER CREEK, BRITISH COLUMBIA (82N/10W)

Z. D. Hora and K. D. Hancock

**KEYWORDS:** Sodalite, alkaline intrusions, sodalite syenite.

## INTRODUCTION

The Mount Mather Creek sodalite prospect is located 30 kilometres north of Golden at latitude 51°33'00" north and longitude 116°53'12" west (Figure 1). The property is delineated by the Hope group of four claims. The site can be accessed via the Blaeberry River Forestry Road thence following a trail north at kilometre 39½. Sodalite outcrops in a steep, narrow canyon cut by a small Blaeberry River tributary called Mount Mather Creek. The creek is a typical snow-fed stream with high flow in the early summer changing to a trickle in the fall. During a typical summer day, the morning flow is small compared to the water flow in the afternoon.

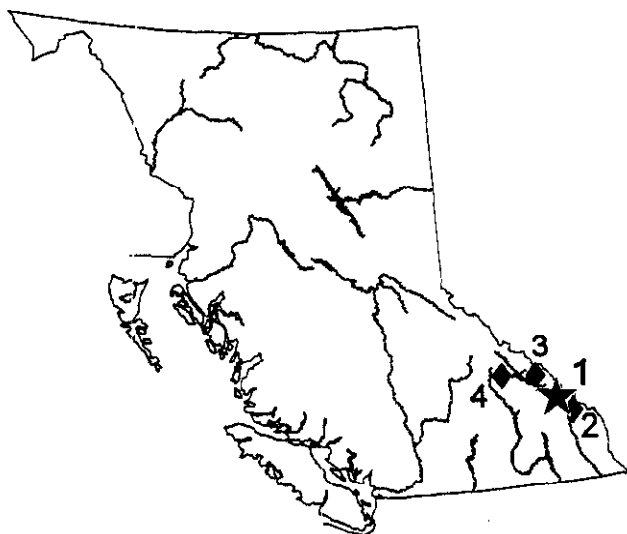


Figure 1. Location of alkaline syenites in the Golden area. 1: Mount Mather Creek; 2: Ice River complex; 3: Solitude Mountain; 4: Trident Mountain

## GEOLOGICAL SETTING

The Mount Mather Creek area is within a syncline of the western "shaly facies" of Middle and Upper Cambrian Chancellor Group carbonate rocks (Price, 1967). Although the broad regional structure is a

syncline, the beds exhibit complicated folding at the property scale.

The lower units of the Chancellor Group, which host the sodalite showing, are massive, well-bedded, fine-grained carbonates. One main breccia dike of sodalite syenite with two tributary dikelets cut the carbonate host rock across bedding planes. The syenite dikes weather brown due to the presence of pyrite and the host limestone exhibits a yellow to buff weathering alteration halo in contrast to its otherwise grey weathered surface. The yellow weathering is often more extensive along some bedding planes. Freshly broken rocks, altered and unaltered, have the same dark grey colour and can not be distinguished macroscopically from each other.

## MOUNT MATHER CREEK SODALITE (MINFILE NUMBER 082N090)

Sodalite is a major component of the syenite/carbonate breccia body. It is up to 10 metres wide and outcrops over a distance of approximately 80 metres in a vertical rocky cliff on the western side of the creek (Figures 2 and 3). It is also present as a minor component in the two thin independent dikes as fine-grained disseminations where albite is the dominant mineral.

While the main breccia outcrop is practically inaccessible, large boulders that have fallen off the cliff and accumulated along and within the creek channel provided material for thin sections and are the source of most macroscopic observations. The main body is part breccia and part stockwork. The host rock consists of fine-grained, bedded carbonate made of very fine-grained (5-25 microns) calcite, variable amounts of feldspar (0-50%) and possibly very small amounts of quartz. Bed thickness varies from about one to 10 millimetres and in thin section is poorly defined. It is characterized by slight average grain size differences and is sometimes accented by iron staining either along bedding planes or throughout individual beds. Breccia clasts, from 1 to 10 centimetres long and 1 to 4 centimetres in diameter, are comprised of the same rock. The fragments exhibit features usually observed in plastic flow regimes, such as boudinage, rounded shapes and preferential orientation of clasts (Figure 4).



Figure 2. Sodalite syenite breccia outcrop. View looking southwest.



Figure 4. Sodalite syenite breccia with limestone clasts.

Sodalite syenite occurs as veins, breccia matrix and disseminations in the host rock. The veins consist of coarse, blocky albite crystals up to 2 millimetres in width with calcite as a secondary vein filling. Calcite often forms secondary veinlets that branch from a central, albite rich "trunk" vein. The calcite grains typically grow perpendicular to vein walls and are up to one millimetre long. The breccia matrix comprises a

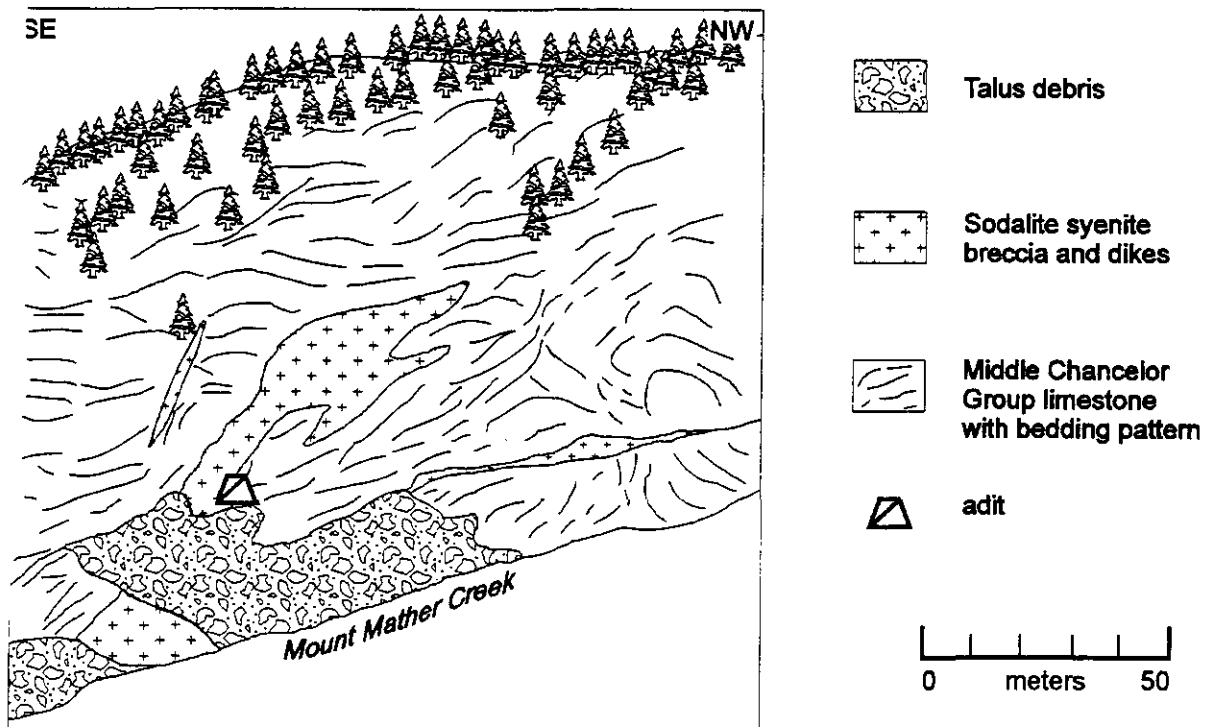


Figure 3. Mount Mather Creek sodalite syenite. View looking southwest at cliff face.



Figure 5. Sodalite syenite veining along bedding planes in limestone.

highly variable mix of albite, calcite, sodalite and scattered grains of pyrite, galena and magnetite. The albite and calcite grains are often 1 to 2 millimetres across and the calcite grains often have well formed twins.

Sodalite is ubiquitous in most of the syenite. It varies from coarse grain aggregates in breccia matrix to fine disseminations that give a blue hue to both thin sections and rock fragments. Coarse sodalite appears restricted to veinlets and pockets within the breccia matrix. It forms anhedral to subhedral grains and grain aggregates that make up 5 to 15 percent of the syenite. Occasionally, sodalite forms aggregates up to several centimetres in size. It can also impregnate large host rock blocks along the bedding planes (Figure 5). As disseminated grains, sodalite is characterized by small euhedral grains  $\frac{1}{4}$  to  $\frac{1}{2}$  millimetres in size that make up to 10 percent of the rock. Pyrite is a common accessory in many samples. It occurs as disseminated crystals up to 2 millimetres in size. A few samples contained galena grains up to 1 millimetre in diameter that, seen under the microscope, were corroded and rimmed by euhedral pyrite. Magnetite occurs as small, approximately  $\frac{1}{4}$  millimetre in diameter, disseminated euhedral grains. While not mineralogically confirmed, the syenite probably also contains sphalerite. Some old assays provided to the authors by Mr. Lefurgey indicate similar values of zinc and lead.

The absence of syenite on the eastern side of the valley, an abrupt end of the dike in the Mount Mather Creek bed and a distinct bedding pattern on each side of the canyon makes the authors suspect that a fault with substantial displacement exists under the creek bed.

The property owner discovered this sodalite occurrence in 1957. At that time, there was already an old, short adit blasted into the main sodalite syenite breccia body (Figure 6). In the summer of 1996, the current owner, Dave Lefurgey, started to develop the site and mined about 3 tonnes of low grade sodalite breccia from loose boulders to market the stone for lapidary and ornamental use.

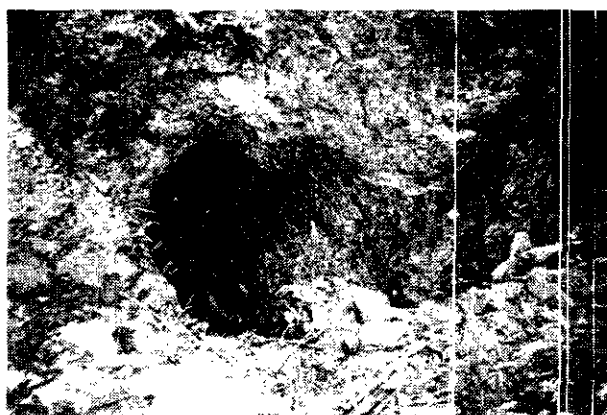


Figure 6. An old adit in sodalite syenite breccia.

## DISCUSSION

The Mount Mather Creek sodalite syenite is another occurrence of alkaline igneous rocks discovered in the Canadian Rocky Mountains and adjacent areas on the west side of the Rocky Mountain and Tintina Trench (Figure 1). The Ice River Complex, within similar host rocks, lies 50 kilometres to the southeast. A similar distance to the northwest is a group of nepheline syenite dikes in the Kinbasket Lake - Solitude Mountain area.

Sodalite is known at several localities in British Columbia. The Ketchika River area, Wicheeda Lake, Bearpaw Ridge, Paradise Lake, Trident Mountain and Moose Creek on the south edge of the Ice River Complex all have sodalite as a common accessory (Pell, 1994). In none of these sites has it been found in a similar quantity as at Mount Mather Creek. If the Mount Mather Creek site is eventually proven a non-commercial sodalite source, due to its rather disseminated nature, it is still the richest accumulation that the senior author is aware of in British Columbia. K.L. Currie (1976) in his Memoir 239 also mentioned, without any site description, Mt. Laussedat as a sodalite locality. It is our opinion, that because of the circumstances of the initial discovery, the Mount Mather Creek is the same occurrence (D. Lefurgey, personal communication, 1996).

One characteristic phenomenon common to a number of alkaline intrusions in the Rocky Mountains is their yellow to brown weathering halo. It is a striking feature of the Aley carbonatite and Rock Canyon Creek Rare Earth element showings, particularly because these two localities are not covered by vegetation. It is also a feature of the Mt. Mather Creek sodalite occurrence. Such a colour anomaly is a very clear feature on low level colour air-photos and can be used as a prospecting tool for finding yet unknown alkaline intrusives. While, because of its location, the Mount Mather Creek site cannot be recognized on air-photos, large, unprospected brownish zones to the northwest and east of the sodalite showing are clearly visible.

## ACKNOWLEDGMENTS

The authors would like to express appreciation to Dave Lefurgey for his hospitality and help in visiting the property. Also, thanks are expressed to Dick Player of the B.C. Geological Survey Branch for lapidary support.

## REFERENCES:

- Currie, K.L. (1976): The Alkaline Rocks of Canada; *Geological Survey of Canada*, Memoir 239, 228 pages.
- Pell, J. (1994): Carbonatites, Nepheline Syenites, Kimberlites and Related Rocks in British Columbia; *B.C. Ministry of Energy, Mines and Petroleum Resources*, Bulletin 88, 136 pages.
- Price, R.A. (1967): Golden, East Half, Map Area (82N E1/2), British Columbia and Alberta; in Report of Activities, *Geological Survey of Canada*, Paper 67-1B, pages 88-91.
- Wheeler, J.O. (1963): Rogers Pass Map Area, British Columbia and Alberta, *Geological Survey of Canada*, Paper 62-32, 32 pages.